



Chipsmall Limited consists of a professional team with an average of over 10 year of expertise in the distribution of electronic components. Based in Hongkong, we have already established firm and mutual-benefit business relationships with customers from,Europe,America and south Asia,supplying obsolete and hard-to-find components to meet their specific needs.

With the principle of "Quality Parts,Customers Priority,Honest Operation,and Considerate Service",our business mainly focus on the distribution of electronic components. Line cards we deal with include Microchip,ALPS,ROHM,Xilinx,Pulse,ON,Everlight and Freescale. Main products comprise IC,Modules,Potentiometer,IC Socket,Relay,Connector.Our parts cover such applications as commercial,industrial, and automotives areas.

We are looking forward to setting up business relationship with you and hope to provide you with the best service and solution. Let us make a better world for our industry!



Contact us

Tel: +86-755-8981 8866 Fax: +86-755-8427 6832

Email & Skype: info@chipsmall.com Web: www.chipsmall.com

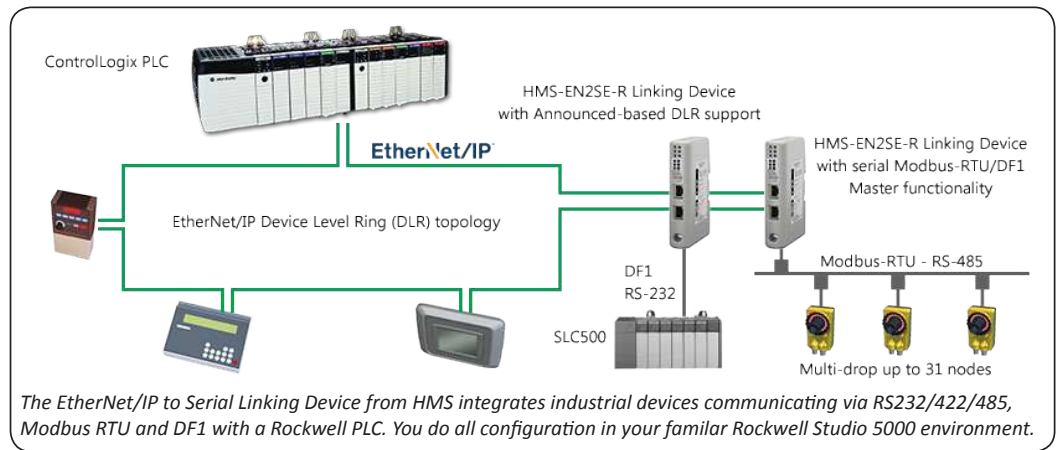
Address: A1208, Overseas Decoration Building, #122 Zhenhua RD., Futian, Shenzhen, China





EtherNet/IP™ to Serial Linking Device

The EtherNet/IP to Serial Linking Device allows you to connect any serial device to your ControlLogix™ and CompactLogix™ PLC from Rockwell Automation. The stand-alone Linking Device is less expensive than an in-chassis-based solution, and has even better integration to Studio 5000® from Rockwell Automation.



In short:

EtherNet/IP Adapter Class product which is tightly integrated to Rockwell Studio5000 allowing you to connect serial devices to Rockwell PLCs.

Connect devices that use:

- RS232/422/485 interfaces
- Modbus RTU
- Rockwell DF1

Catalog number:

HMS-EN2SE-R



HMS provides a full 3 year product guarantee

The EtherNet/IP to Serial Linking Device will:

- Minimize costs when connecting serial devices to your PLC. More cost-efficient than an in-chassis solution.
- Allow you to easily retrofit existing serial devices.
- Speed up configuration — Automated process inside Rockwell Studio5000.

Technical highlights

- Custom Add-On Profile: simplifies configuration and reduces commissioning time, dynamically generates data structures. No need for any ladder logic or Add On Instructions.
- No hardware or software changes for the connected device.
- Does not affect backplane performance (PLC execution time), even when large amount of data is transferred to the Logix PLC.
- EtherNet/IP Adapter Class product supporting announced-based DLR.
- Supports serial RS232/422/485, Modbus RTU and DF1.
- Automatically generates named and structured Studio 5000 controller tags based on the configuration — no need for add-on instructions or creating alias tags.
- Connects up to 31 serial nodes.
- ODVA, CE, UL, ATEX and Haz.Loc. certifications pending.

Integrated into Studio5000



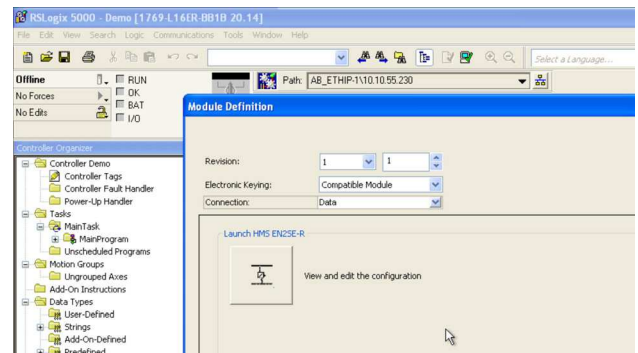
All network and device configuration is done within Studio 5000.

See how it works at www.encompass.hms-networks.com

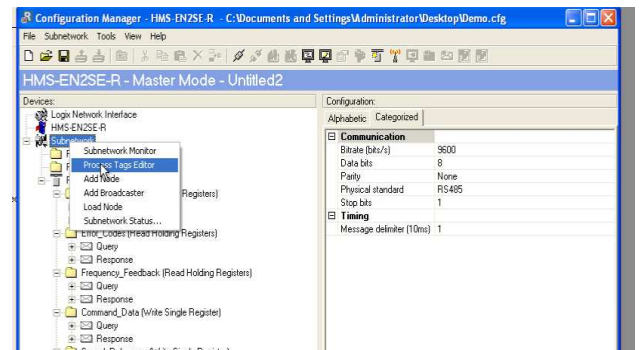


TECHNICAL SPECIFICATIONS

EtherNet/IP to Serial Linking Device		
Protocol	RS232/422/485, Modbus RTU and DF1	
Max stations	31 (with RS485/422)	
Baud rate	1,2-57,6 kbit/s	
Physical standards	One RS232/422/485 connector and two RJ45 connectors	
I/O Data	Max. 500 input bytes, 496 output bytes.	
Modbus Commands	0x01 Read Coils, 0x02 Read Discrete Inputs, 0x03 Read Holding Registers, 0x04 Read Input Registers, 0x05 Write Single Coil, 0x06 Write Single Register, 0x07 Read Exception Status, 0x08 Diagnostics, 0x0B Get Comm Event Ctr, 0x0C Get Comm Event Log, 0x0F Write Multiple Coils, 0x10 Write Multiple Registers, 0x11 Report Slave ID, 0x14 Read File Record, 0x15 Write File Record, 0x16 Mask Write Register, 0x17 Read/Write Multiple Registers, 0x18 Read FIFO Queue Customized commands can be created (in the Configuration Manager)	
Technical Details		Standard
Weight	150 g, 0,33 lb	
Dimensions (L-W-H)	120*75*27 mm, 4,72*2,95*1,06"	
Protection class	IP20, NEMA rating 1	
Enclosure material	PC ABS, UL 94	
Installation position	Any	
Mounting	DIN rail (35*7,5/15)	EN 50022
Certifications		
UL	File number: E203225	UL 508 ind. Cont. Eq.
Hazardous Locations	Class 1, Division 2, Groups A, B, C and D, T4	ISA 12.12.01
CE	2014/30/EU	EN 61000-6-4 EN 61000-6-2
Electrical Characteristics		
Power	24 VDC +/- 10 %	
Current consumption	Max 300 mA, Typical 100 mA	
Hardware Characteristics		
Reverse voltage protection	Yes	
Short circuit protection	Yes	
Galvanic isolation on subnetwork	Yes	
MTTF	>550 000 h	Telcordia Issue 2, Method 1 Case 3 at 30 °C
Environmental Characteristics		
Operating temp	0 to 55 °C, 32 to 131 °F	
Storage temp	-40 to 85 °C, -40 to 185 °F	
Relative Humidity	0-95 % non condensing	
Installation altitude	Up to 2 000 m	
Immunity and emission for industrial environment		
Electrostatic discharge	+/- 4 kV	EN 61000-4-2
Electro magnetic RF fields	10 V/m 80 MHz - 1 GHz 3 V/m 1,4 GHz - 2,0 GHz 1 V/m 2,0 GHz - 2,7 GHz	EN 61000-4-3
Fast Transients	+/- 1 kV	EN 61000-4-4
Surge protection	+/- 1 kV	EN 61000-4-5
RF conducted interference	10 V/rms	EN 61000-4-6
Emission (at 10 m)	40 dB 30 MHz - 230 MHz 47 dB 30 MHz - 1 GHz	CISPR 16-2-3
Single Pack Accessories		
Installation sheet • Dsub with screw terminals for subnetwork		



The configuration is integrated into Rockwell Studio5000. With a click of the mouse, you start the configurator for the Linking Device.



By using the Process Tags Editor, you can save yourself a lot of work by letting the software automatically create process tags.

HMS Industrial Networks – Worldwide

HMS - Sweden (HQ)

Tel : +46 35 17 29 00 (Halmstad HQ)
Tel: +46 35 17 29 24 (Västerås office)
E-mail: sales@hms-networks.com

HMS - Germany

Tel: +49 721 989777-000
E-mail: ge-sales@hms-networks.com

HMS - Japan

Tel: +81 45 478 5340
E-mail: jp-sales@hms-networks.com

HMS - United States

Tel: +1 312 829 0601
E-mail: us-sales@hms-networks.com

HMS - China

Tel : +86 010 8532 3183
E-mail: cn-sales@hms-networks.com

HMS - India

Tel: +91 83800 66578
E-mail: in-sales@hms-networks.com

HMS - Switzerland

Tel: +41 61 511342-0
E-mail: sales@hms-networks.ch

HMS - France

Tel: +33 368 368 034 (Mulhouse office)
E-mail: fr-sales@hms-networks.com

HMS - Italy

Tel: +39 039 59662 27
E-mail: it-sales@hms-networks.com

HMS - UK

Tel: +44 1926 405599
E-mail: uk-sales@hms-networks.com

Anybus® is a registered trademark of HMS Industrial Networks AB, Sweden, USA, Germany and other countries. Other marks and words belong to their respective companies. All other product or service names mentioned in this document are trademarks of their respective companies.

Part No: MMA433 Version 1 08/2015 - © HMS Industrial Networks - All rights reserved - HMS reserves the right to make modifications without prior notice.