



Chipsmall Limited consists of a professional team with an average of over 10 year of expertise in the distribution of electronic components. Based in Hongkong, we have already established firm and mutual-benefit business relationships with customers from,Europe,America and south Asia,supplying obsolete and hard-to-find components to meet their specific needs.

With the principle of “Quality Parts,Customers Priority,Honest Operation,and Considerate Service”,our business mainly focus on the distribution of electronic components. Line cards we deal with include Microchip,ALPS,ROHM,Xilinx,Pulse,ON,Everlight and Freescale. Main products comprise IC,Modules,Potentiometer,IC Socket,Relay,Connector.Our parts cover such applications as commercial,industrial, and automotives areas.

We are looking forward to setting up business relationship with you and hope to provide you with the best service and solution. Let us make a better world for our industry!



Contact us

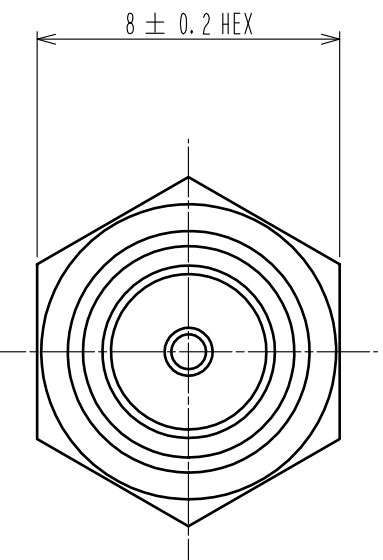
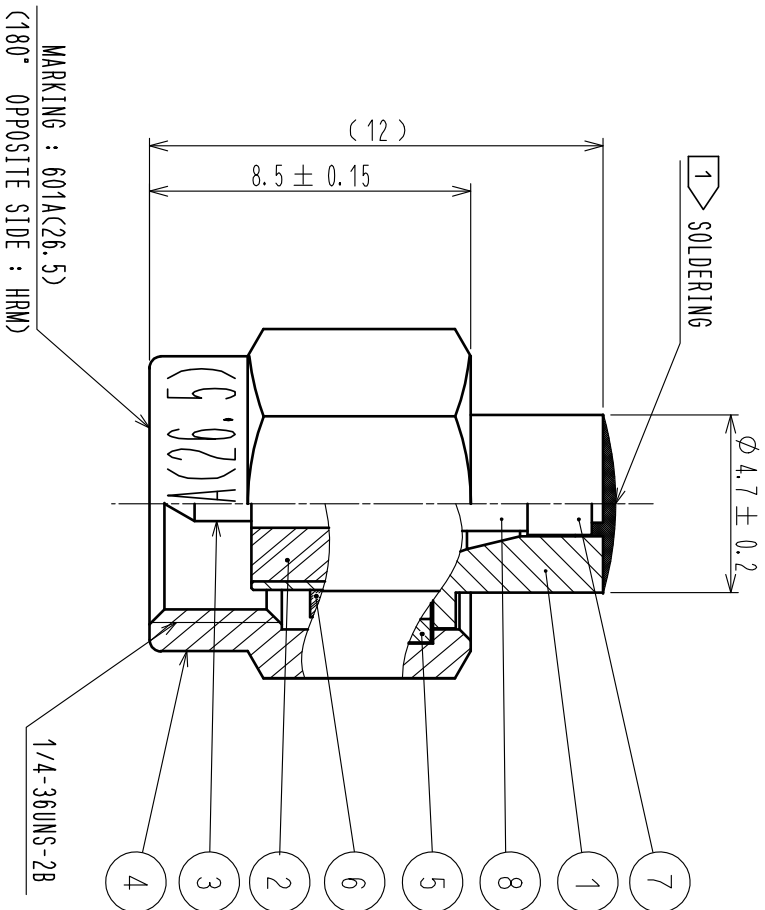
Tel: +86-755-8981 8866 Fax: +86-755-8427 6832

Email & Skype: info@chipsmall.com Web: www.chipsmall.com

Address: A1208, Overseas Decoration Building, #122 Zhenhua RD., Futian, Shenzhen, China



| APPLICABLE STANDARD | | | | | |
|--|---|------------------|---|-----------------------|------------|
| RATING | OPERATING TEMPERATURE RANGE | -40°C TO +85°C | STORAGE TEMPERATURE RANGE | -40°C TO +85°C | |
| | POWER | 0.25 W (at 65°C) | CHARACTERISTIC IMPEDANCE | 50 Ω (DC TO 26.5 GHz) | |
| | OPERATING RELATIVE HUMIDITY | 95% MAX | USED CONNECTOR | HRM-P(SMA-P) | |
| SPECIFICATIONS | | | | | |
| ITEM | TEST METHOD | | REQUIREMENTS | QT | AT |
| CONSTRUCTION | | | | | |
| GENERAL EXAMINATION | VISUALLY AND BY MEASURING INSTRUMENT. | | ACCORDING TO DRAWING. | X | X |
| MARKING | CONFIRMED VISUALLY. | | | X | X |
| ELECTRIC CHARACTERISTICS | | | | | |
| V.S.W.R. | MUST BE UNDER THE STD.VALUE AT FREQUENCY DC TO 4.0 GHz | | MAXIMUM OF 1.08 | X | X |
| | MUST BE UNDER THE STD.VALUE AT FREQUENCY 4.0 TO 8.0 GHz | | MAXIMUM OF 1.10 | | |
| | MUST BE UNDER THE STD.VALUE AT FREQUENCY 8.0 TO 12.4 GHz | | MAXIMUM OF 1.12 | | |
| | MUST BE UNDER THE STD.VALUE AT FREQUENCY 12.4 TO 18.0 GHz | | MAXIMUM OF 1.15 | | |
| | MUST BE UNDER THE STD.VALUE AT FREQUENCY 18.0 TO 26.5 GHz | | MAXIMUM OF 1.20 | | |
| RESISTANCE VALUE | MEASURE THE RESISTANCE VALUE AT DC1V. | | 48 TO 52 Ω | X | X |
| TEMPERATURE RISE | IMPRESSED THE POWER RATING(DC). | | MAXIMUM OF 40°C | X | - |
| MECHANICAL CHARACTERISTICS | | | | | |
| VIBRATION | FREQUENCY 10 TO 2000 Hz, TOTAL AMPLITUDE 1.52 mm, 98 m/s ² AT 4 HOURS FOR 3 DIRECTIONS. | | ①ELECTRICAL CHARACTERISTIC SHALL BE MET. ②NO DAMAGE, CRACK, AND LOOSENESS, OF PARTS. | X | - |
| SHOCK | ACCELERATION : 490 m/s ² DURATION : 11 ms , HALF SINE WAVE 3 BOTH AXIAL DIRECTIONS, 3 TIMES EACH | | ①ELECTRICAL CHARACTERISTIC SHALL BE MET. ②NO DAMAGE, CRACK, AND LOOSENESS, OF PARTS. | X | - |
| ENVIRONMENTAL CHARACTERISTICS | | | | | |
| RAPID CHANGE OF TEMPERATURE | TEMPERATURE -55 →15~35 →85 →15~35°C TIME 30 →2~3 →30 →2~3 min TEST 5 CYCLES AND LEAVE IT FOR ONE HOUR OR TWO. | | ①ELECTRICAL CHARACTERISTIC SHALL BE MET. ②NO DAMAGE, CRACK, AND LOOSENESS, OF PARTS. | X | - |
| SALT ATMOSPHERE (CORROSION) | SALT SOLUTION CONCENTRATION 5% SALT WATER SPRAY FOR 48 HOURS. | | NO CORROSION WHICH AFFECTS THE OPERATION OF COMPONENT. | X | - |
| | | | | | |
| COUNT | DESCRIPTION OF REVISIONS | | DESIGNED | CHECKED | DATE |
| △ | 1 | DIS-D-00000579 | YI. FUNADA | TO. KATAYAMA | 15. 10. 09 |
| REMARK | | | APPROVED | KY. SHIMIZU | 15. 01. 14 |
| (1) ROHS COMPLIANT | | | CHECKED | TO. KATAYAMA | 15. 01. 14 |
| (2) USE LEAD FREE SOLDER(Sn3.0Ag0.5Cu). | | | DESIGNED | YI. FUNADA | 15. 01. 14 |
| (3) MARKING IS HRM601A(26.5). | | | DRAWN | YI. FUNADA | 15. 01. 14 |
| △ Unless otherwise specified, refer to IEC 60512. | | | | | |
| Note QT:Qualification Test AT:Assurance Test X:Applicable Test | | | DRAWING NO. | ELC-030012-52-52 | |
| HR | SPECIFICATION SHEET | | PART NO. | HRM-601A (52) | |
| | HIROSE ELECTRIC CO., LTD. | | CODE NO. | CL353-0017-3-52 | △ 1/1 |



NOTE 1 Lead-free solder of Sn3Ag0.5Cu is used.

ROHS COMPLIANT

| | | | | | |
|-----|-----------------|------------------|-----|------------------|------------------|
| 4 | STAINLESS STEEL | PASSIVATED | 8 | RESISTANCE | 50Ω |
| 3 | BRASS | GOLD PLATING | 7 | BRASS | GOLD PLATING |
| 2 | PTFE | | 6 | SILICONE RUBBER | |
| 1 | STAINLESS STEEL | NICKEL PLATING | 5 | BERYLLIUM COPPER | NICKEL PLATING |
| NO. | MATERIAL | FINISH . REMARKS | NO. | MATERIAL | FINISH . REMARKS |

| | | | | | | |
|-------|-------|-------|--------------------------|----------|---------|------|
| UNITS | SCALE | COUNT | DESCRIPTION OF REVISIONS | DESIGNED | CHECKED | DATE |
| mm | 5 : 1 | | | | | |

| | | | |
|------------------------|----------|-------------|------------------|
| APPROVED : KY. SHIMIZU | 15.01.14 | DRAWING NO. | EDC-030012-52-52 |
| CHECKED : TO. KATAYAMA | 15.01.14 | PART NO. | HRM-601A(52) |
| DESIGNED : YI. FUNADA | 15.01.14 | CODE NO. | CL353-0017-3-52 |
| DRAWN : YI. FUNADA | 15.01.14 | | |

HRS HIROSE ELECTRIC CO., LTD.