



Chipsmall Limited consists of a professional team with an average of over 10 year of expertise in the distribution of electronic components. Based in Hongkong, we have already established firm and mutual-benefit business relationships with customers from,Europe,America and south Asia,supplying obsolete and hard-to-find components to meet their specific needs.

With the principle of “Quality Parts,Customers Priority,Honest Operation,and Considerate Service”,our business mainly focus on the distribution of electronic components. Line cards we deal with include Microchip,ALPS,ROHM,Xilinx,Pulse,ON,Everlight and Freescale. Main products comprise IC,Modules,Potentiometer,IC Socket,Relay,Connector.Our parts cover such applications as commercial,industrial, and automotives areas.

We are looking forward to setting up business relationship with you and hope to provide you with the best service and solution. Let us make a better world for our industry!



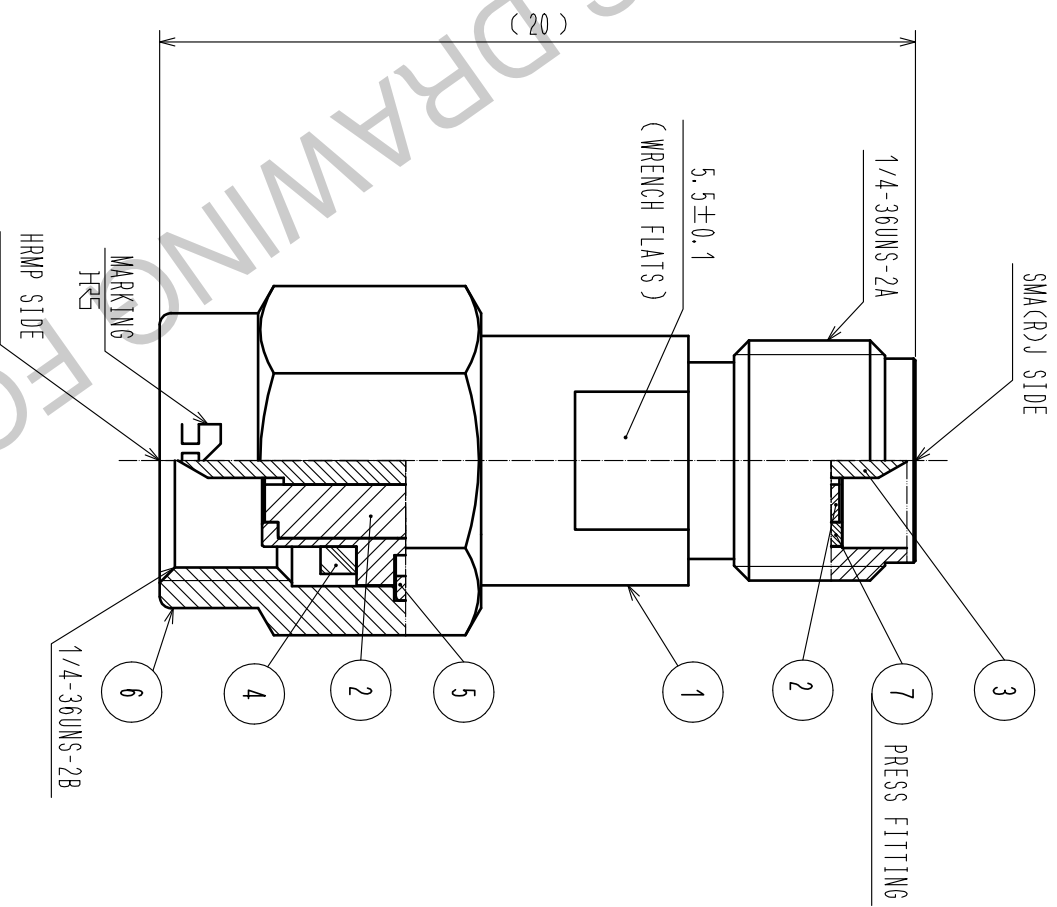
Contact us

Tel: +86-755-8981 8866 Fax: +86-755-8427 6832

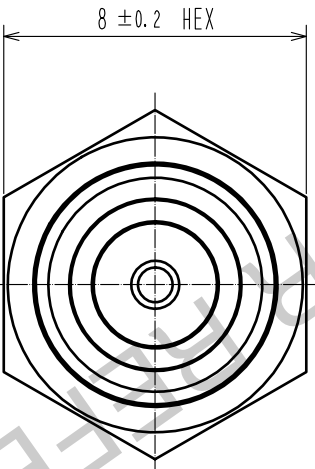
Email & Skype: info@chipsmall.com Web: www.chipsmall.com

Address: A1208, Overseas Decoration Building, #122 Zhenhua RD., Futian, Shenzhen, China





RoHS COMPLIANT



4	SILICON RUBBER		7	STAINLESS STEEL	PASSIVATED	
3	BRASS	GOLD PLATING	6	STAINLESS STEEL	PASSIVATED	
2	PTFE		5	BERYLLIUM COPPER	NICKEL PLATING	
1	STAINLESS STEEL	PASSIVATED				
NO.	MATERIAL	FINISH . REMARKS	NO.	MATERIAL	FINISH . REMARKS	

UNITS	mm	SCALE	5 : 1	COUNT	DESCRIPTION OF REVISIONS	DESIGNED	CHECKED	DATE

HRS HIROSE ELECTRIC CO., LTD.	APPROVED : KY. SHIMIZU	16.07.08	DRAWING NO.	EDC-366798-00-00
	CHECKED : KY. SHIMIZU	16.07.08	PART NO.	HRMP-SMA(R)J
	DESIGNED : MH. OGUSU	16.07.08	CODE NO.	CL323-0036-0-00
	DRAWN : MH. OGUSU	16.07.08		