



Chipsmall Limited consists of a professional team with an average of over 10 year of expertise in the distribution of electronic components. Based in Hongkong, we have already established firm and mutual-benefit business relationships with customers from,Europe,America and south Asia,supplying obsolete and hard-to-find components to meet their specific needs.

With the principle of “Quality Parts,Customers Priority,Honest Operation,and Considerate Service”,our business mainly focus on the distribution of electronic components. Line cards we deal with include Microchip,ALPS,ROHM,Xilinx,Pulse,ON,Everlight and Freescale. Main products comprise IC,Modules,Potentiometer,IC Socket,Relay,Connector.Our parts cover such applications as commercial,industrial, and automotives areas.

We are looking forward to setting up business relationship with you and hope to provide you with the best service and solution. Let us make a better world for our industry!



## Contact us

Tel: +86-755-8981 8866 Fax: +86-755-8427 6832

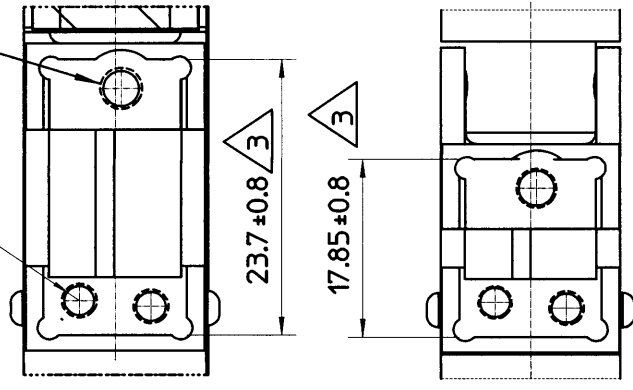
Email & Skype: info@chipsmall.com Web: www.chipsmall.com

Address: A1208, Overseas Decoration Building, #122 Zhenhua RD., Futian, Shenzhen, China



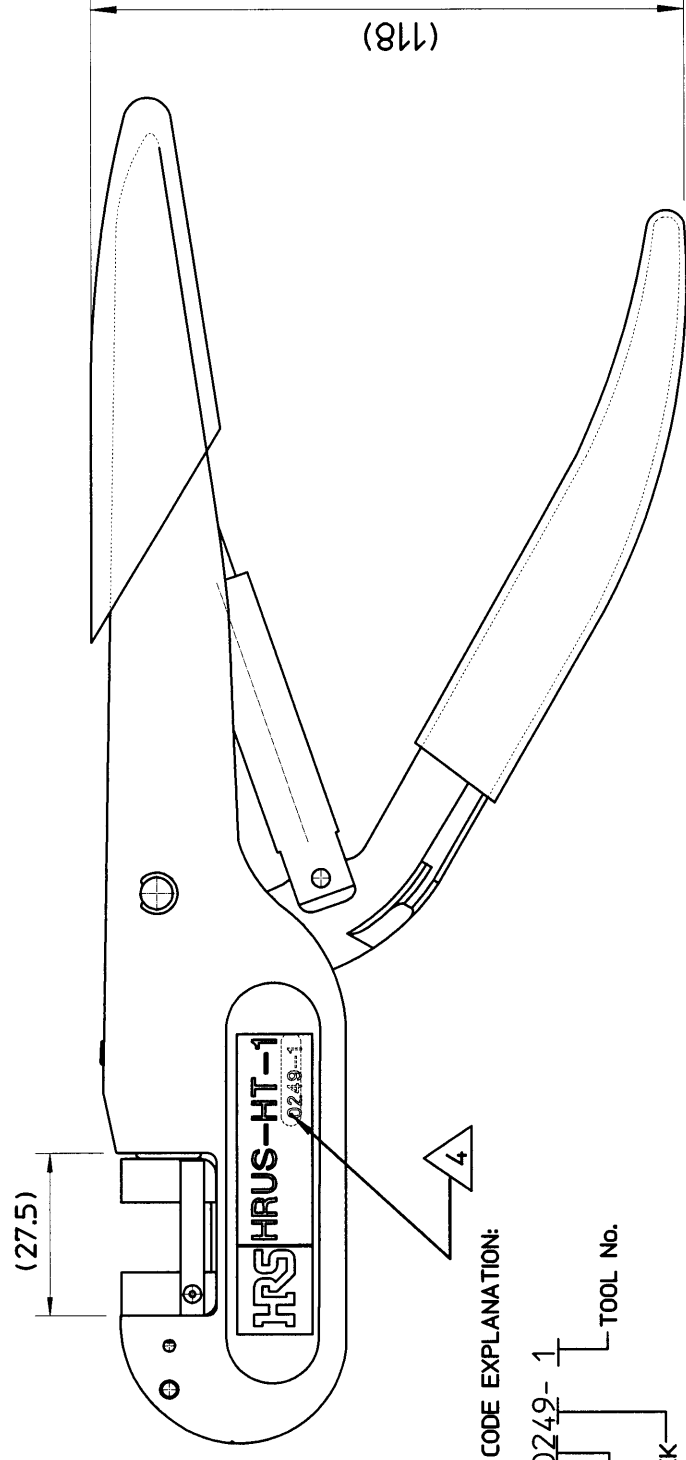
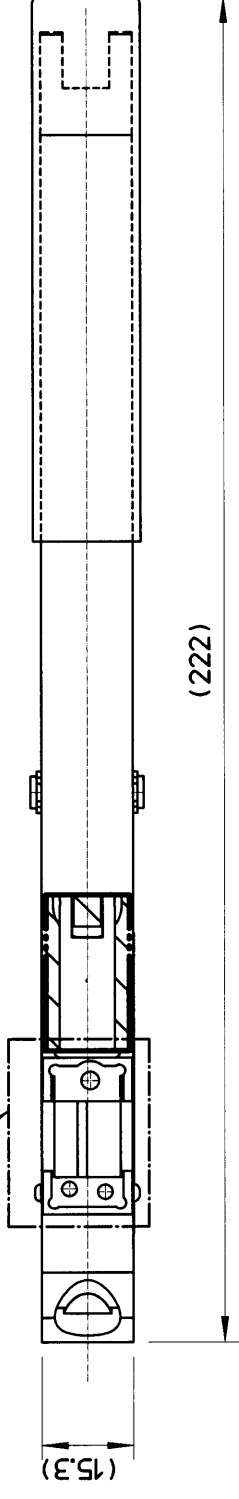
THE INFORMATION CONTAIN HEREIN IS PROPRIETARY TO HIROSE ELECTRIC (USA), INC., ALL RIGHTS THEREIN ARE RESERVED AND SHALL NOT BE USED, DUPLICATED, OR FURTHER DISSEMINATED FOR ANY PURPOSE WITHOUT THE CONSENT OF HIROSE ELECTRIC (USA), INC.

2X M2.5 X 0.45

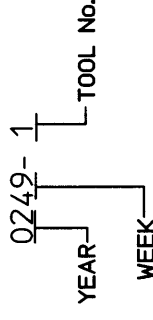


Detail 1  
Scale 2:1

see Detail 1



DATE CODE EXPLANATION:



8. PACKAGING: CARDBOARD BOX. SIZE: 254mm X 76mm X 51mm (10" X 3" X 2").

7. THIS HAND CRIMP TOOL TO BE USED WITH THE INTERCHANGABLE DIE SETS FOR CRIMPING DF3, DF11 AND DF13 CONNECTOR SERIES.

6. TOOL KIT TO BE PACKAGED IN THE ZIP-LOCK PLASTIC BAG AS SHOWN ON FIG. 1. LABEL TO BE APPLIED AS SHOWN.

5. FOR ASSEMBLY AND OPERATION OF THIS HAND TOOL, REFER TO INSTRUCTION MANUAL P/No. PS075.

4. DATE CODE AND TOOL No.; SEE EXAMPLE FOR EXPLANATION.

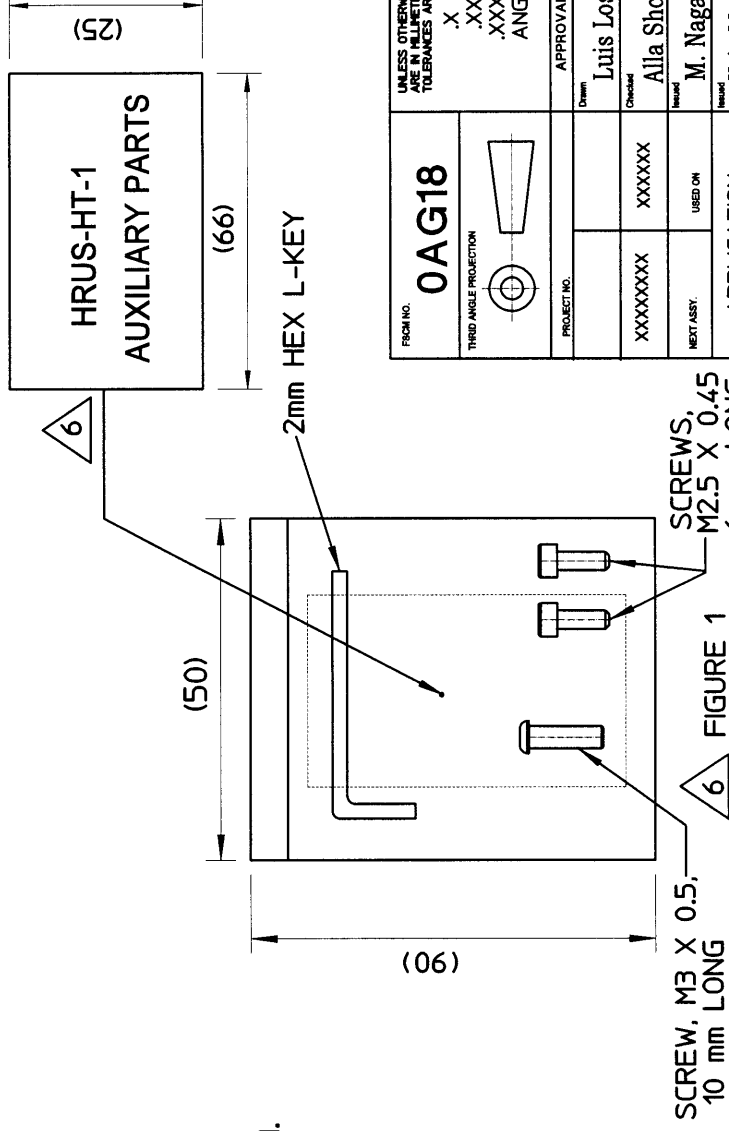
3. DIMENSION 23.7 APPLIES WHEN LEVER IS IN 'OPEN' POSITION;

DIMENSION 17.85 APPLIES WHEN THE LEVER IS IN 'CLOSED' POSITION.

2. DIMENSIONS IN ( ) ARE FOR REFERENCE ONLY.

1. DIMENSIONING AND TOLERANCING PER ANSI/ASME Y14.5M-1994

NOTES (UNLESS OTHERWISE SPECIFIED)



CUSTOMER USE DRAWING

FROM NO. <b>0AG18</b>	THIRD ANGLE PROJECTION	UNLESS OTHERWISE SPECIFIED DIMENSIONS ARE IN MILLIMETERS TOLERANCES ARE: X - ±0.1 .XX - ±0.05 .XXX - ±0.03 ANGLE - ±1°	APPROVALS	DATE
			DESIGNED Luis Lostaunau	02/06/03
PROJECT NO.	DATE	CL NUMBER	REV.	
XXXXXXX	02/07/03	5910-8500-2	SIZE	REV.
XXXXXXX	02/07/03	HRUS-HT-1	B	B
XXXXXXX	02/07/03	HRUS-HT-1	DWG NUMBER	
XXXXXXX	02/10/03	HRUS-HT-1	SCALE	1 OF 1
XXXXXXX			N/A	
XXXXXXX				

**HRS** HIROSE ELECTRIC (U.S.A), INC  
SIMI VALLEY, CALIFORNIA 93065

PART NUMBER: **HRUS-HT-1**

CL NUMBER: **5910-8500-2**

SIZE: **B**

SCALE: **N/A**

SHEET: **1 OF 1**