



Chipsmall Limited consists of a professional team with an average of over 10 year of expertise in the distribution of electronic components. Based in Hongkong, we have already established firm and mutual-benefit business relationships with customers from,Europe,America and south Asia,supplying obsolete and hard-to-find components to meet their specific needs.

With the principle of "Quality Parts,Customers Priority,Honest Operation,and Considerate Service",our business mainly focus on the distribution of electronic components. Line cards we deal with include Microchip,ALPS,ROHM,Xilinx,Pulse,ON,Everlight and Freescale. Main products comprise IC,Modules,Potentiometer,IC Socket,Relay,Connector.Our parts cover such applications as commercial,industrial, and automotives areas.

We are looking forward to setting up business relationship with you and hope to provide you with the best service and solution. Let us make a better world for our industry!



Contact us

Tel: +86-755-8981 8866 Fax: +86-755-8427 6832

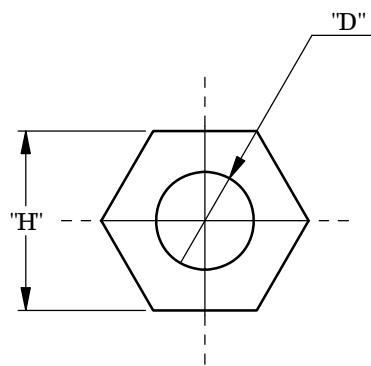
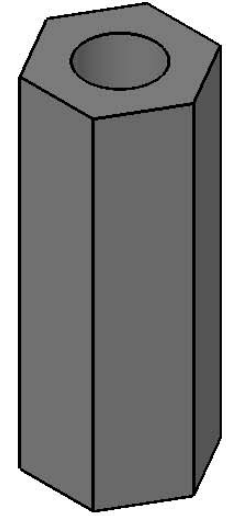
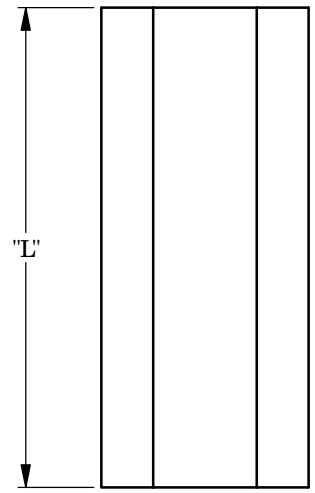
Email & Skype: info@chipsmall.com Web: www.chipsmall.com

Address: A1208, Overseas Decoration Building, #122 Zhenhua RD., Futian, Shenzhen, China



| REV. | MODIFICATION. | DATE | DRN |
|------|-------------------|----------|-----|
| 01 | Catalogue Release | 25/04/12 | RA |
| 02 | CO2011282 | 14/08/12 | SF |

| For # 4 Self Tapping Screw | For # 6 Self Tapping Screw | For # 8 Self Tapping Screw | "L" |
|----------------------------|----------------------------|----------------------------|------|
| "D"=2.6 "H"=4.8 | "D"=2.8 "H"=6.4 | "D"=3.6 "H"=9.5 | |
| HS-4-3 | HS-6-3 | HS-8-3* | 9.5 |
| HS-4-4 | HS-6-4 | HS-8-4 | 12.7 |
| HS-4-5 | HS-6-5 | HS-8-5 | 15.9 |
| HS-4-6 | HS-6-6 | HS-8-6 | 19.1 |
| HS-4-7 | HS-6-7 | HS-8-7 | 22.2 |
| HS-4-8 | HS-6-8 | HS-8-8 | 25.4 |
| HS-4-10 | HS-6-10 | HS-8-10 | 31.8 |
| HS-4-12 | HS-6-12 | HS-8-12 | 38.1 |
| HS-4-14 | HS-6-14 | HS-8-14 | 44.5 |
| HS-4-16 | HS-6-16 | HS-8-16 | 50.8 |
| HS-4-24 | HS-6-24 | HS-8-24 | 76.2 |



| | | | | | |
|--|---------------------------------|---|---|---------------------------------|-------------------------------------|
| <p>INFORMATION CONTAINED IN THIS DOCUMENT IS CONFIDENTIAL TO RICHCO INTERNATIONAL Co., Ltd. AND MAY NOT BE DISCLOSED OR REPRODUCED IN WHOLE OR PART WITHOUT THEIR WRITTEN CONSENT.</p> | | | | | |
| <p>RICHCO, INC. WWW.RICHCO-INC.COM</p> | | | <p>ALL DIMENSIONS IN mm GENERAL TOLERANCES ±0.25 UNLESS OTHERWISE STATED 1 DECIMAL PLACE ±0.25 2 DECIMAL PLACES ±0.10 ANGULAR ±1°</p> | | <p>THIRD ANGLE</p> |
| <p>MATERIAL: PVC (RMS-448)</p> | | | <p>COLOR: G REY</p> | | |
| <p>DESCRIPTION: HEX SPACER</p> | | | <p>PART No : SEE TABLE</p> | | |
| <p>DRG No : 012-063</p> | | <p>PROJECT NUMBER: HS-EU</p> | | <p>Ma ss:(g) XXX</p> | <p>SHEET SIZE A4</p> |
| <p>DRN RA</p> | <p>DATE 25/04/12</p> | <p>CHKD SF</p> | <p>DATE 25/04/12</p> | <p>SCALE NTS</p> | <p>SHEET No . 1 OF 1</p> |

* AVAILABLE BY SPECIAL ORDER