



Chipsmall Limited consists of a professional team with an average of over 10 year of expertise in the distribution of electronic components. Based in Hongkong, we have already established firm and mutual-benefit business relationships with customers from,Europe,America and south Asia,supplying obsolete and hard-to-find components to meet their specific needs.

With the principle of “Quality Parts,Customers Priority,Honest Operation,and Considerate Service”,our business mainly focus on the distribution of electronic components. Line cards we deal with include Microchip,ALPS,ROHM,Xilinx,Pulse,ON,Everlight and Freescale. Main products comprise IC,Modules,Potentiometer,IC Socket,Relay,Connector.Our parts cover such applications as commercial,industrial, and automotives areas.

We are looking forward to setting up business relationship with you and hope to provide you with the best service and solution. Let us make a better world for our industry!



## Contact us

Tel: +86-755-8981 8866 Fax: +86-755-8427 6832

Email & Skype: info@chipsmall.com Web: www.chipsmall.com

Address: A1208, Overseas Decoration Building, #122 Zhenhua RD., Futian, Shenzhen, China



# Who's there?



With an AXS-COM audio entry system you know who's there before you open the door.

**storm**<sup>®</sup>  
**AXS-COM**



VANDAL RESISTANT



IMPACT RESISTANT



IP54 SEALED



>2 Million

OPERATIONS PER KEY



RESPONSIVE KEY ACTION



ESD PROTECTED



CE COMPLIANT



2-WAY VOICE COMMUNICATION



REMOTE DOOR RELEASE

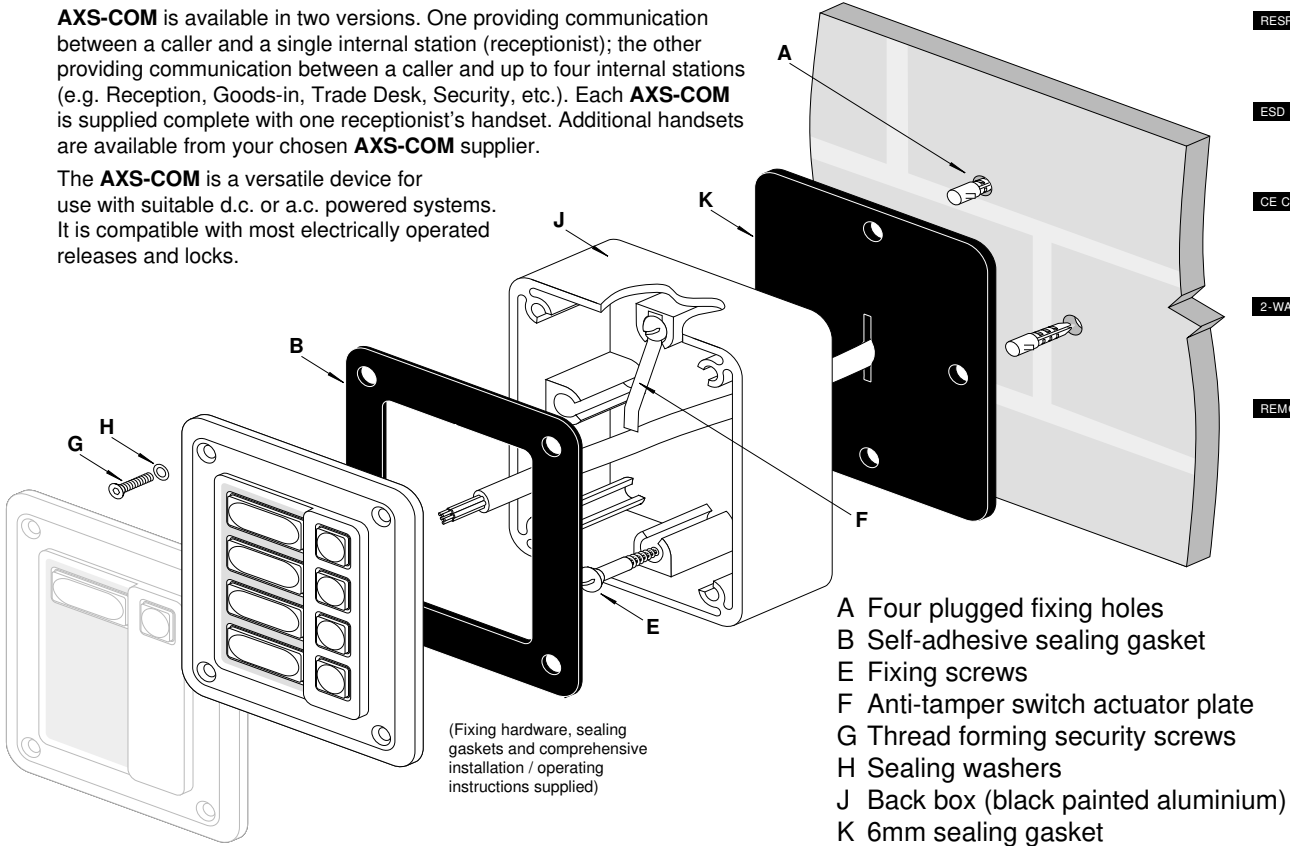
## STORM AXS-COM Intercom for Access Control.

STORM AXS-COM Intercom for Access Control is a secure, self contained, two way voice communication system. From a secure location a receptionist can talk to visitors awaiting access through a locked door. This allows the caller's identity and nature of business to be checked before allowing entry to a secure area.

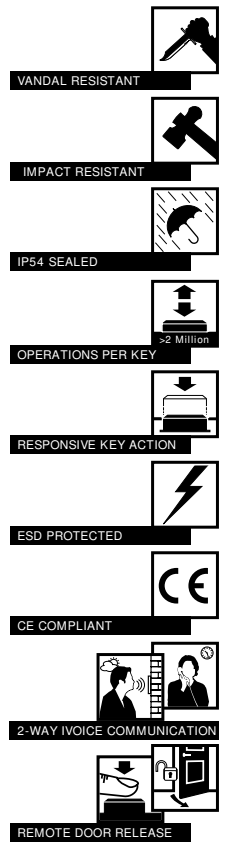
The receptionist can unlock the door by pressing a remote lock-release switch incorporated in the receptionist's handset. AXS-COM is a "stand-alone" system; alternatively it can be used in conjunction with STORM AXS Access Control Keypads.

AXS-COM is available in two versions. One providing communication between a caller and a single internal station (receptionist); the other providing communication between a caller and up to four internal stations (e.g. Reception, Goods-in, Trade Desk, Security, etc.). Each AXS-COM is supplied complete with one receptionist's handset. Additional handsets are available from your chosen AXS-COM supplier.

The AXS-COM is a versatile device for use with suitable d.c. or a.c. powered systems. It is compatible with most electrically operated releases and locks.



- A Four plugged fixing holes
- B Self-adhesive sealing gasket
- E Fixing screws
- F Anti-tamper switch actuator plate
- G Thread forming security screws
- H Sealing washers
- J Back box (black painted aluminium)
- K 6mm sealing gasket



### PRODUCT FEATURES

- Tough, weather-resistant and vandal-resistant construction
- d.c. System gives clear, two-way voice communication
- Anti-tamper alarm output for improved security
- 1 and 4 doorbell / call button(s)
- Quick and easy installation
- 1-4 station communication
- Can be used to control a wide range of a.c. or d.c. electric door releases and locks
- Power supply 11-28V d.c., 9-20V a.c.
- Station identity inserts provided (blank)
- Wall or flush-panel mountable
- Supplied complete with fixing hardware, back box and comprehensive installation instructions.
- 1 black d.c. handset included

PART DESCRIPTION	PART NUMBER
AXS-COM (1 Station)	IC0102
AXS-COM (4 Station)	IC0402
ACCESSORIES (AVAILABLE SEPARATELY)	
Additional Handset	HS0002
Privacy Shroud	1KFS02
Electric Releases	DEST02
Power Supply	DEPS02



FM 39602

USA Office:



450-B Industrial Drive, Fort Collins, CO 80524  
Tel: 970-221 2201 Fax: 970-484 4078