



Chipsmall Limited consists of a professional team with an average of over 10 year of expertise in the distribution of electronic components. Based in Hongkong, we have already established firm and mutual-benefit business relationships with customers from,Europe,America and south Asia,supplying obsolete and hard-to-find components to meet their specific needs.

With the principle of “Quality Parts,Customers Priority,Honest Operation,and Considerate Service”,our business mainly focus on the distribution of electronic components. Line cards we deal with include Microchip,ALPS,ROHM,Xilinx,Pulse,ON,Everlight and Freescale. Main products comprise IC,Modules,Potentiometer,IC Socket,Relay,Connector.Our parts cover such applications as commercial,industrial, and automotives areas.

We are looking forward to setting up business relationship with you and hope to provide you with the best service and solution. Let us make a better world for our industry!



## Contact us

Tel: +86-755-8981 8866 Fax: +86-755-8427 6832

Email & Skype: [info@chipsmall.com](mailto:info@chipsmall.com) Web: [www.chipsmall.com](http://www.chipsmall.com)

Address: A1208, Overseas Decoration Building, #122 Zhenhua RD., Futian, Shenzhen, China



THIS COPY IS PROVIDED ON A RESTRICTED BASIS AND IS NOT TO BE USED IN ANY WAY DETRIMENTAL TO THE INTERESTS OF PANDUIT CORP.

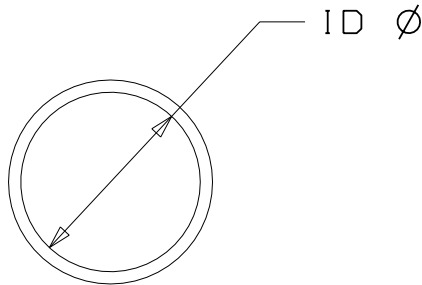
HSTTP 12 - M

PANDUIT NUMBERING SYSTEM

LENGTH M = 1000' MIN.  
D = 500' MIN.  
TL = 250' MIN.  
C = 100' MIN.

EXPANDED I.D. TUBING SIZE.

PVC THIN WALL HEAT SHRINK TUBING.



**NOTES:**

1. MATERIAL: CROSS-LINKED, FLEXIBLE, HIGHLY FLAME RETARDANT.
2. COLOR: BLACK
3. SHRINK RATIO: 2:1
4. SHRINK RATIOS ARE APPROXIMATIONS; PLEASE REFER TO DIMENSIONAL TABLE FOR THE EXACT MINIMUM EXPANDED AND MAXIMUM RECOVERED I.D.'S
5. "ALL WARRANTIES, INCLUDING MERCHANTABILITY AND FITNESS FOR A PARTICULAR PURPOSE, ARE EXCLUDED. (USER IS RESPONSIBLE TO DETERMINE SUITABILITY OF PRODUCT FOR INTENDED USE.)"

PANDUIT PART NUMBER	Min. RECOVERED ID	Max. RECOVERED ID	NOMINAL REC WALL THICKNESS In. (mm)
HSTTP05-M	.046 (1.2)	.023 (.6)	.020 (0.5)
HSTTP06-M	.063 (1.6)	.031 (.8)	.020 (0.5)
HSTTP09-M	.093 (2.4)	.046 (1.2)	.025 (0.6)
HSTTP12-M	.125 (3.2)	.062 (1.6)	.025 (0.6)
HSTTP19-M	.187 (4.8)	.093 (2.4)	.025 (0.6)
HSTTP25-M	.250 (6.4)	.125 (3.2)	.025 (0.6)
HSTTP38-D	.375 (9.5)	.187 (4.8)	.030 (0.8)
HSTTP50-D	.500 (12.7)	.250 (6.4)	.030 (0.8)
HSTTP75-C	.750 (19.0)	.375 (9.5)	.035 (0.9)
HSTTP100-TL	1.000 (25.4)	.500 (12.7)	.040 (1.0)
HSTTP150-C	1.500 (38.1)	.750 (19.0)	.045 (1.1)
HSTTP200-C	2.000 (50.8)	1.000 (25.4)	.050 (1.3)

DIMENSIONS IN BRACKETS ARE METRIC [ mm ]

CAD FILENAME/LAYERS

G00239K I\_PB\_HSTTP\_01

**PANDUIT**

CORP.

TINLEY PARK, ILLINOIS

HSTTP PVC THIN WALL  
HEAT SHRINK

UNLESS OTHERWISE SPECIFIED,  
DIMENSIONAL TOLERANCES ARE:  
(.X) ±0.05 (1.3) (.XXX) ±0.010 (0.25)  
(.XX) ±0.02 (0.5) ANGLES ± 5°

UNLESS OTHERWISE SPECIFIED,  
ALL DIMENSIONS ARE GIVEN  
IN INCHES, THIRD ANGLE PROJECTION.

DRAWN BY  
LGRAVITT

MAT'L:

SCALE NONE

DATE  
5/12/03

SEE NOTES

DRAWING NO.

G00239K I

DWG  
A  
SIZE

I	2/23/06	JAD		HSTTP75-C WAS HSTTP75-TL	GB0239K I	I							
REV	DATE	BY	CHK	DESCRIPTION	ECN	- R	CUST	SUP					