



Chipsmall Limited consists of a professional team with an average of over 10 year of expertise in the distribution of electronic components. Based in Hongkong, we have already established firm and mutual-benefit business relationships with customers from,Europe,America and south Asia,supplying obsolete and hard-to-find components to meet their specific needs.

With the principle of "Quality Parts,Customers Priority,Honest Operation,and Considerate Service",our business mainly focus on the distribution of electronic components. Line cards we deal with include Microchip,ALPS,ROHM,Xilinx,Pulse,ON,Everlight and Freescale. Main products comprise IC,Modules,Potentiometer,IC Socket,Relay,Connector.Our parts cover such applications as commercial,industrial, and automotives areas.

We are looking forward to setting up business relationship with you and hope to provide you with the best service and solution. Let us make a better world for our industry!



Contact us

Tel: +86-755-8981 8866 Fax: +86-755-8427 6832

Email & Skype: info@chipsmall.com Web: www.chipsmall.com

Address: A1208, Overseas Decoration Building, #122 Zhenhua RD., Futian, Shenzhen, China



THIS DRAWING IS UNPUBLISHED.

RELEASED FOR PUBLICATION

20

© COPYRIGHT 20 BY -

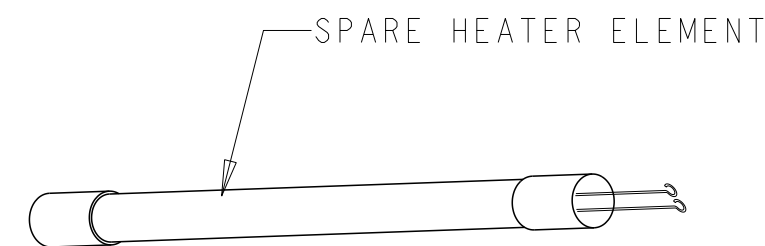
ALL RIGHTS RESERVED.

REVISIONS

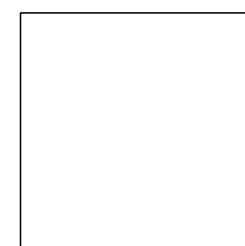
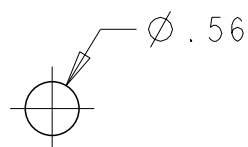
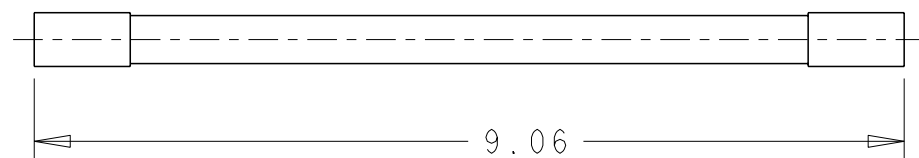
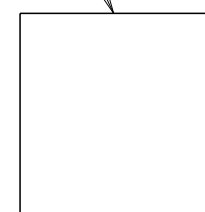
P	LTR	DESCRIPTION	DATE	DWN	APVD
	A	REVISED PER ECO-15-018245	21DEC2015	KK	HS

HEATER ELEMENT REPLACEMENT KIT (230 VAC)

ITEM	QTY	PART NO.	DWG./SPEC.	DESCRIPTION
1	1	308484-000	HT-920A-113	SPARE HEATER ELEMENT
2	1	052287-000	HT-900A/920A	INSTRUCTION SHEET
3	A/R	345951-000	55M	SILICONE GREASE - DOW CORNING



SILICONE GREASE - DOW CORNING



SPARE HEATER ELEMENT
308484-000

HEATER ELEMENT REPLACEMENT KIT (230 VAC)	011349-000
DESCRIPTION	PART NO.

THIS DRAWING IS A CONTROLLED DOCUMENT.		DWN KIRAN K 14DEC2015																
DIMENSIONS: INCHES		CHK N. NAGAR 21DEC2015																
TOLERANCES UNLESS OTHERWISE SPECIFIED:		APVD H. SMITH 21DEC2015	NAME HEATER ELEMENT REPLACEMENT KIT (230 VAC)															
<table border="1"> <tr><td>0 PLC</td><td>±-</td></tr> <tr><td>1 PLC</td><td>±-</td></tr> <tr><td>2 PLC</td><td>±-</td></tr> <tr><td>3 PLC</td><td>±-</td></tr> <tr><td>4 PLC</td><td>±-</td></tr> <tr><td>ANGLES</td><td>±-</td></tr> </table>		0 PLC	±-	1 PLC	±-	2 PLC	±-	3 PLC	±-	4 PLC	±-	ANGLES	±-	PRODUCT SPEC -	SIZE A3	CAGE CODE -	DRAWING NO HT-920A-124	RESTRICTED TO -
0 PLC	±-																	
1 PLC	±-																	
2 PLC	±-																	
3 PLC	±-																	
4 PLC	±-																	
ANGLES	±-																	
MATERIAL -		APPLICATION SPEC -	WEIGHT -	SCALE NTS		SHEET 1 OF 1	REV A											
-		CUSTOMER DRAWING																