



Chipsmall Limited consists of a professional team with an average of over 10 year of expertise in the distribution of electronic components. Based in Hongkong, we have already established firm and mutual-benefit business relationships with customers from,Europe,America and south Asia,supplying obsolete and hard-to-find components to meet their specific needs.

With the principle of “Quality Parts,Customers Priority,Honest Operation,and Considerate Service”,our business mainly focus on the distribution of electronic components. Line cards we deal with include Microchip,ALPS,ROHM,Xilinx,Pulse,ON,Everlight and Freescale. Main products comprise IC,Modules,Potentiometer,IC Socket,Relay,Connector.Our parts cover such applications as commercial,industrial, and automotives areas.

We are looking forward to setting up business relationship with you and hope to provide you with the best service and solution. Let us make a better world for our industry!



Contact us

Tel: +86-755-8981 8866 Fax: +86-755-8427 6832

Email & Skype: info@chipsmall.com Web: www.chipsmall.com

Address: A1208, Overseas Decoration Building, #122 Zhenhua RD., Futian, Shenzhen, China



2011/02/24 15:59:39 TH.HIJJINO

DRAWING FOR REFERENCE: This is subject to change without notice

COUNT	DESCRIPTION OF REVISIONS	BY	CHECKED	DATE	COUNT	DESCRIPTION OF REVISIONS	BY	CHECKED	DATE
△					△				
△					△				
APPLICABLE STANDARD									
RATING	ELECTRIC SOURCE	PHASE AC-DC V Hz			WEIGHT		0.6kg		
	DISSIPATION POWER				APPLICABLE CONNECTOR		UM-QP-1.5WOR3(CL318-0099-0) UM-QP-1.5WCR3A(CL318-0176-0)		
	AIR SOURCE				APPLICABLE CABLE		1.5D-2W		
	AIR CONSUMPTION				APPLICABLE EQUIPMENT				
	OPERATING TEMPERATURE LIMIT	°C ~ °C							
SPECIFICATIONS									
ITEM	TEST METHOD				REQUIREMENTS		QT	AT	
APPEARANCE, STRUCTURE AND FINISH	Visually and by measuring instrument.				According to drawing.		○	○	
MARKING	Confirmed visually.				According to drawing.		○	○	
CONSTITUTION									
REMARKS					DRAWN	DESIGNED	CHECKED	APPROVED	RELEASED
					11.2.18 H.KUDO	11.2.18 M.TAKAHASHI	11.2.18 M.Shimada	11.2.18 S. Sakabe	
Unless otherwise specified, refer to									
Note QT:Qualification Test AT:Assurance Test X:Applicable Test									
HRS HIROSE ELECTRIC CO.,LTD.					SPECIFICATION SHEET		PART NO. HT303/PO-P-2-T		
CODE NO. (OLD)		DRAWING NO.		CODE NO.		1		1	
		ELC4- 275821		CL 350-0152-0					

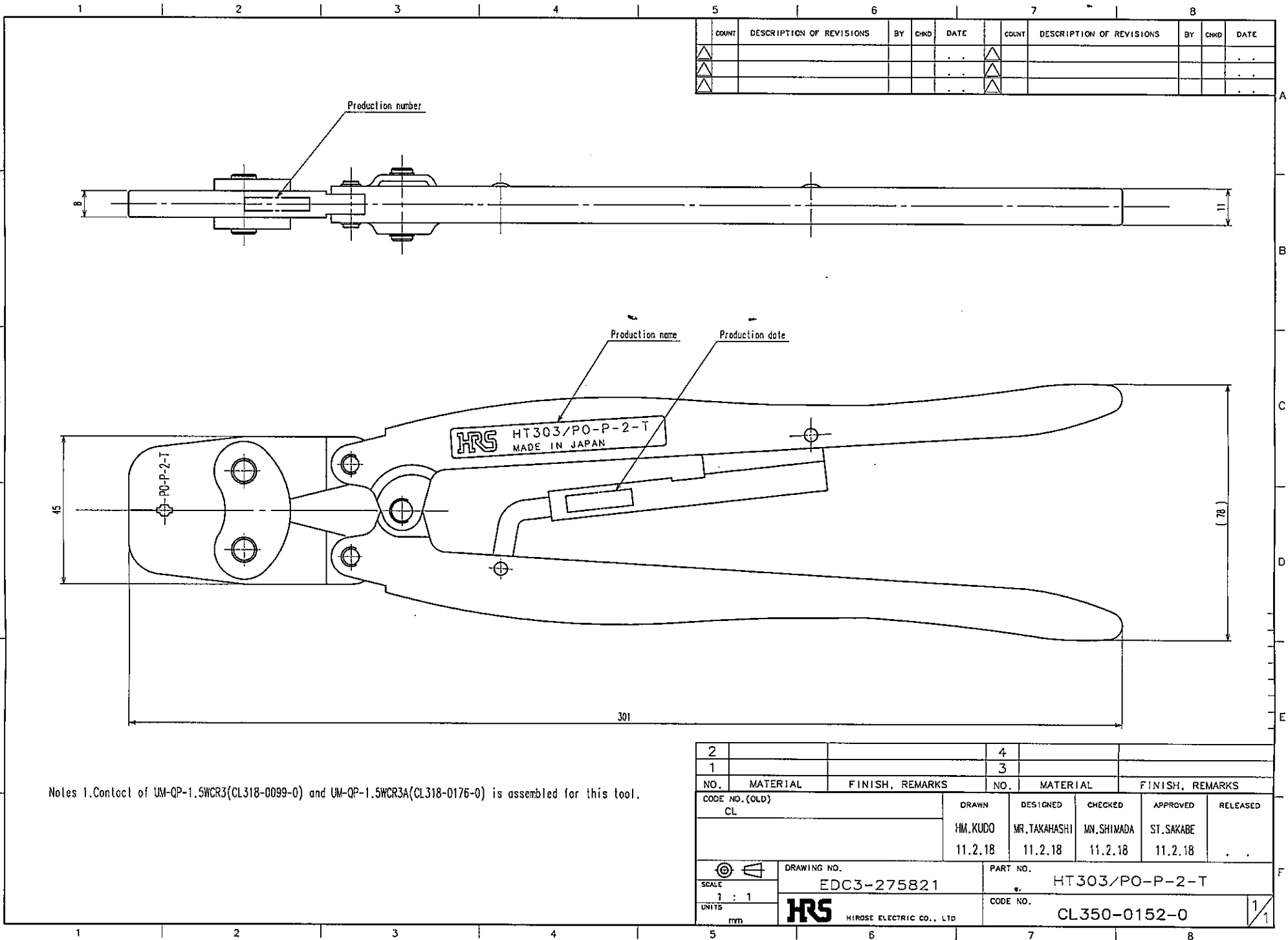
FROM001-1

TO
RF

2011/02/24 15:59:41 TH.HIJINO

DRAWING FOR REFERENCE: This is subject to change without notice

TO
RF



Notes 1. Contact of UM-QP-1.5WCR3(CL318-0099-0) and UM-QP-1.5WCR3A(CL318-0176-0) is assembled for this tool.

NO.	MATERIAL	FINISH, REMARKS	NO.	MATERIAL	FINISH, REMARKS
2			4		
1			3		

CODE NO. (OLD) CL	DRAWN HM.KUDO 11.2.18	DESIGNED MR.TAKAHASHI 11.2.18	CHECKED MN.SHIMADA 11.2.18	APPROVED ST.SAKABE 11.2.18	RELEASED ..
SCALE 1 : 1	DRAWING NO. EDC3-275821		PART NO. HT303/PO-P-2-T		
UNITS mm	HRS HIROSE ELECTRIC CO., LTD		CODE NO. CL350-0152-0		1/1