



Chipsmall Limited consists of a professional team with an average of over 10 year of expertise in the distribution of electronic components. Based in Hongkong, we have already established firm and mutual-benefit business relationships with customers from,Europe,America and south Asia,supplying obsolete and hard-to-find components to meet their specific needs.

With the principle of “Quality Parts,Customers Priority,Honest Operation,and Considerate Service”,our business mainly focus on the distribution of electronic components. Line cards we deal with include Microchip,ALPS,ROHM,Xilinx,Pulse,ON,Everlight and Freescale. Main products comprise IC,Modules,Potentiometer,IC Socket,Relay,Connector.Our parts cover such applications as commercial,industrial, and automotives areas.

We are looking forward to setting up business relationship with you and hope to provide you with the best service and solution. Let us make a better world for our industry!



## Contact us

Tel: +86-755-8981 8866 Fax: +86-755-8427 6832

Email & Skype: info@chipsmall.com Web: www.chipsmall.com

Address: A1208, Overseas Decoration Building, #122 Zhenhua RD., Futian, Shenzhen, China



## HTT70

---

For all variants of the HTT70

**Hardware Manual**

Revision 1.1



## Contents

HTT70 Technical Specifications .....	3
Available Headers .....	3
Dimensional Drawings .....	4
Characteristics.....	6
Optical .....	6
Power .....	6
Environmental.....	6
Options.....	7
Power Options .....	7
Recommended Accessories .....	8
HDMI Cable .....	8
USB Cable .....	8
Power Adaptor .....	8
Support .....	8
Contact.....	8

## Revision History

Revision	Date	Description	Author
1.1	February 22, 2018	Added -TPC variant drawing	Divino
1.0	November 6, 2017	First Release	Divino

## HTT70 Technical Specifications

The HTT70 is a 7.0" TFT display with an HDMI interface. The 800x480 resolution offers crisp images, and video feedback, with 24-bit Full colour capabilities. The HTT can be configured with resistive, capacitive, or non-touch panels, making this display suitable for any application.

### Available Headers

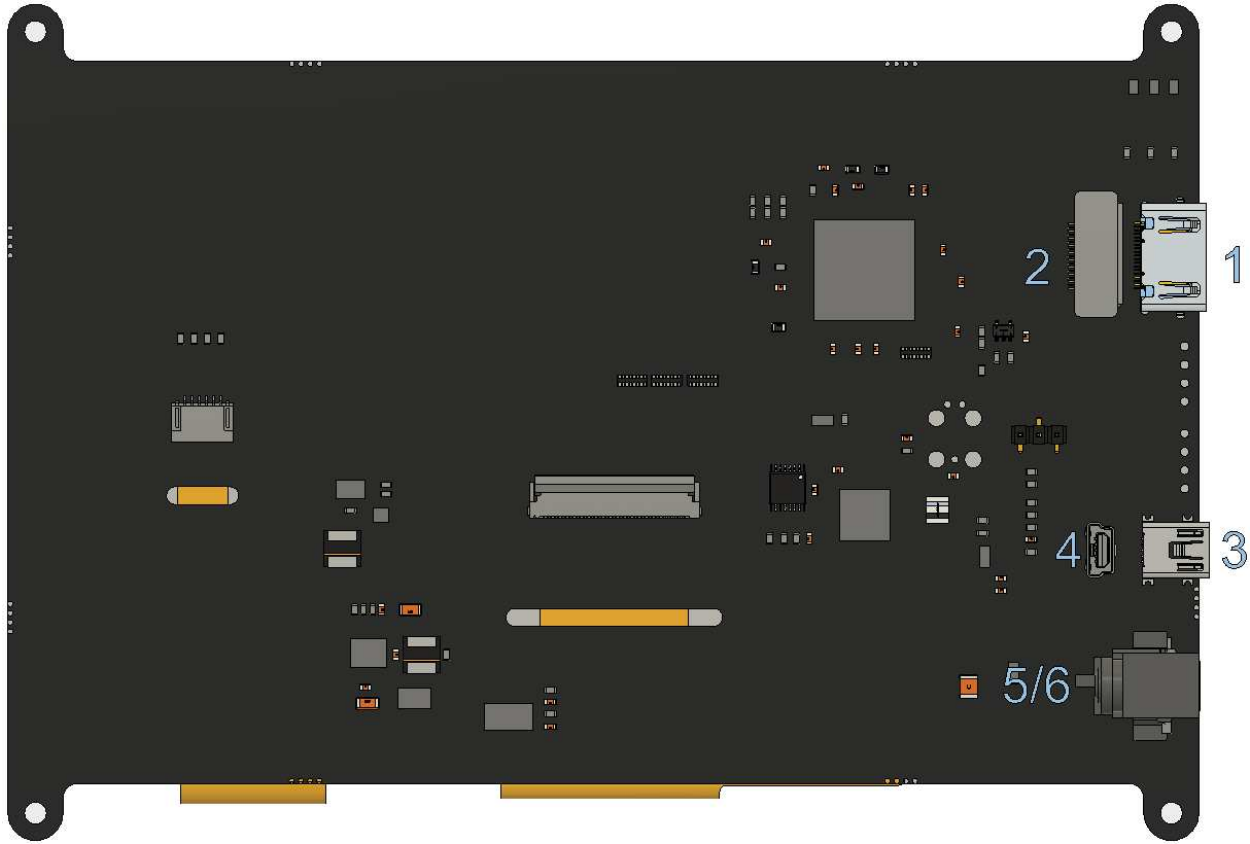


Figure 1: HTT70A Headers

Table 1: HTT70A Headers and Mates

#	Header	Standard Mate	Population
1	HDMI Port, Horizontal, Type A Standard	Type A Standard HDMI Cable	-H5
2	HDMI Port, Vertical, Type A Standard	Type A Standard HDMI Cable	-H6
3	Mini USB, Horizontal: Touch & Power	Mini-B USB Cable	-H5
4	Mini USB, Vertical: Touch & Power	Mini-B USB Cable	-H6
5	Barrel Jack: 2.1mm Center Positive	Power Adaptor	-H6
6	External Power, 2-1445057-2	Micro MATE-N-LOCK 1445022-2	-VPT model

## Dimensional Drawings

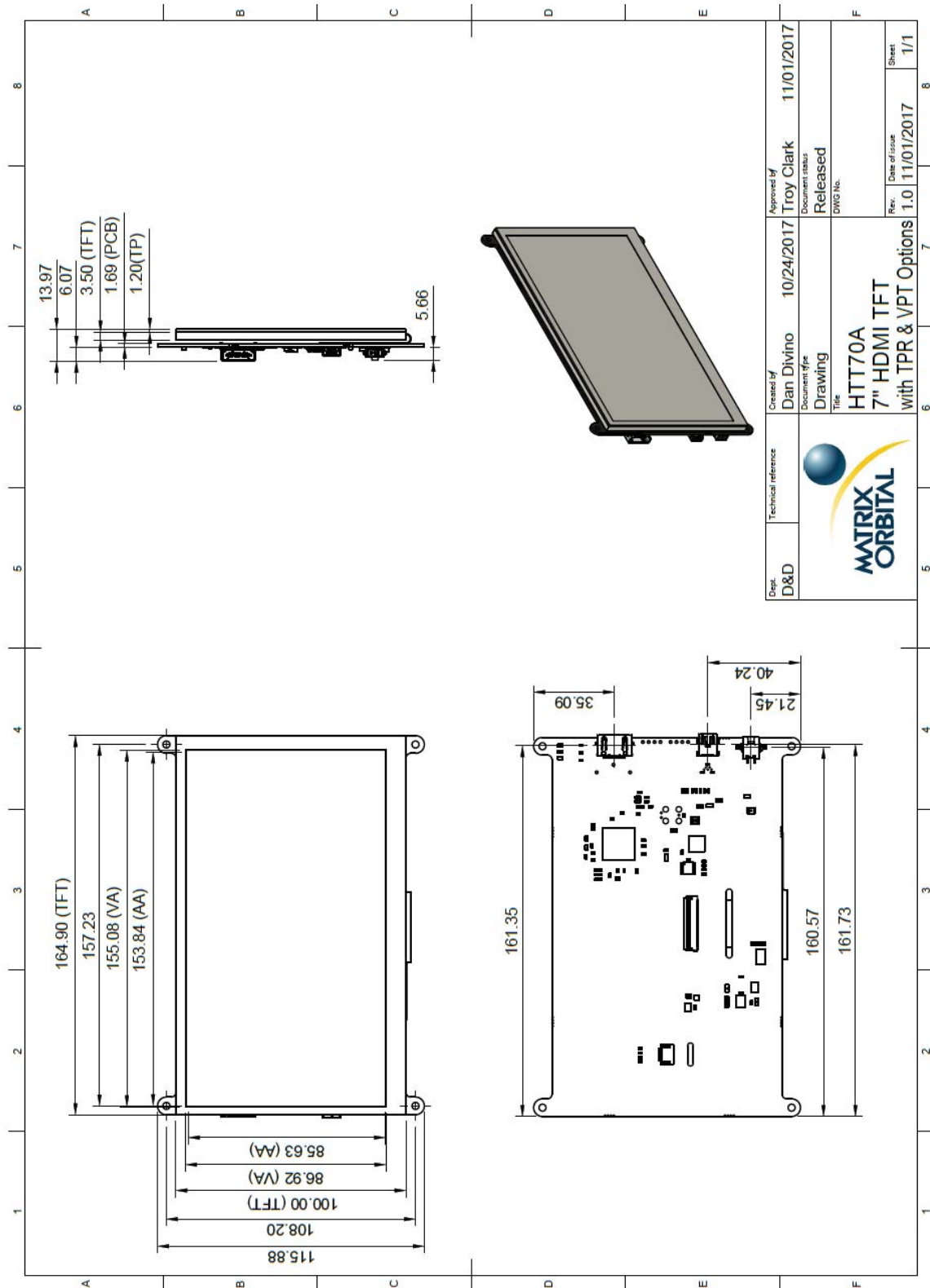


Figure 2: Resistive Touch Panel HTT70A Dimensional Drawing

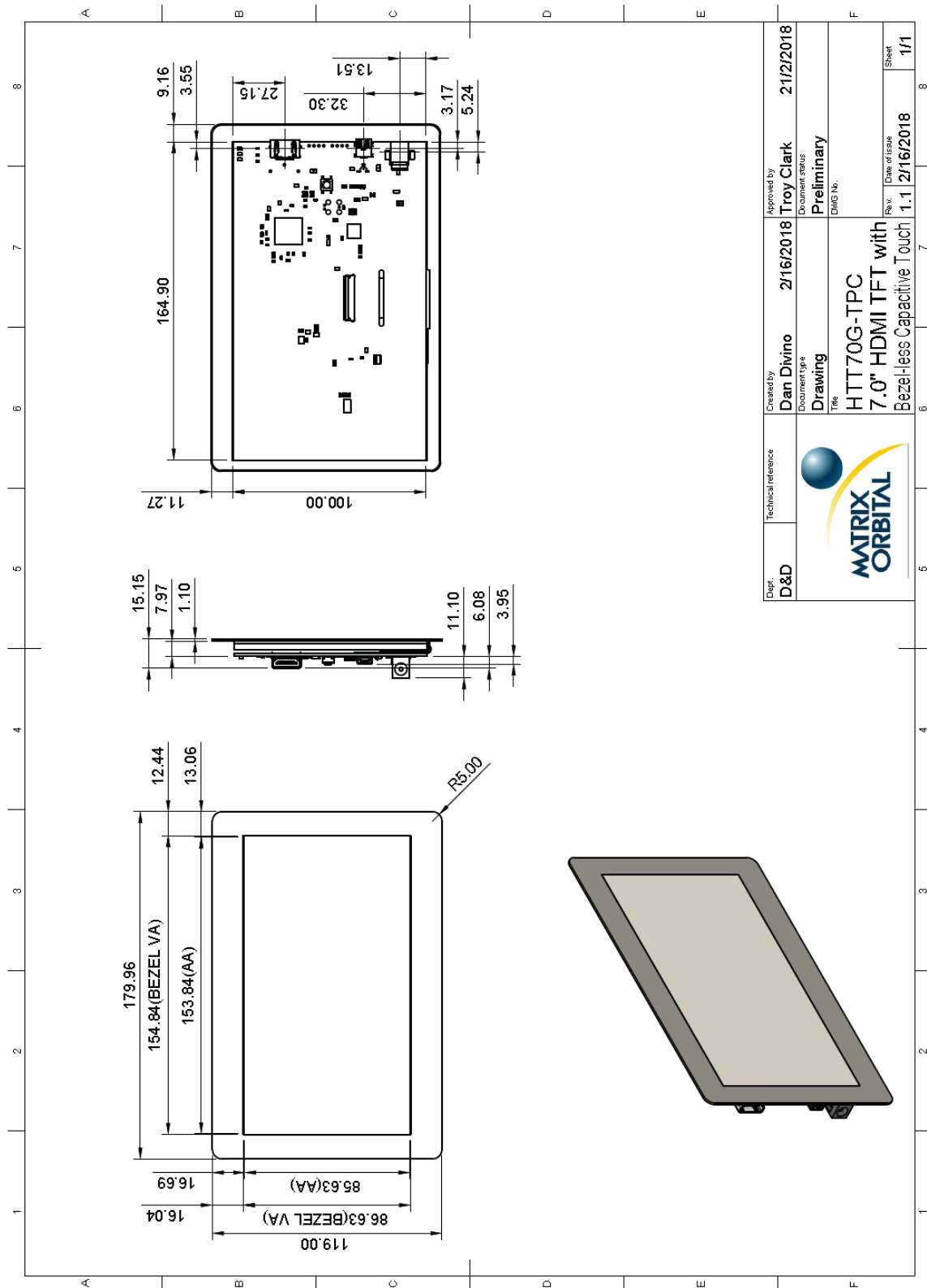


Figure 3: Bezel-less Capacitive Touch Panel HTT70G Dimensional Drawing

## Characteristics

### Optical

Table 2: HTT70 Optical Characteristics

Module Size	164.90 x 115.88 x 12.77	mm
Viewing Area	157.00 x 89.10	mm
Active Area	153.84 x 85.63	mm
Pixel Pattern	800 x 480 x 24bit RGB	
Pixel Pitch	0.1923 x 0.1784	mm
Luminance	520	cd/m <sup>2</sup>
Viewing Angle	70° Left, Right, Up 60° Down	
Contrast Ratio	500:1	
Backlight Half-Life	20,000 hours	

### Power

Table 3: HTT70 Typical Power Characteristics

Parameter	Min	Typ	Max	Unit	Remarks
Logic	-	375	-	mA	Backlight Off
Backlight	0	-	465	mA	Off, Mid, Max

Table 4: HTT70 Maximum Power Characteristics

Parameter	Min	Typ	Max	Unit	Remarks
Supply Voltage	4.75	5.0	5.25	V	Standard Voltage (V5)
	5.0	12.0	35.0	V	Wide Voltage (VPT)

### Environmental

Table 5: HTT70 Environmental Characteristics

Operating Temperature	0°C to +70°C
Storage Temperature	-30°C to +80°C
Operating Relative Humidity*	90% (T < 60°C)

\*Note: No condensation at any temperature



## Options

Table 6: Part Numbering Scheme

HTT	70	A	-TPR	-BLM	-B0	-H5	-CH	-V5
1	2	3	4	5	6	7	8	9

Table 7: Display Options

#	Designator	Options
1	Product Type	HTT: Graphic TFT Display
2	Display Size	70: 7.0"
3	Screen Type	A: A Type G: G Type
4	Touch	-TPN: No touch panel -TPR: Resistive touch panel -TPC: Capacitive touch panel -CTB: Bezel-less capacitive touch panel
5	Backlight	-BLM: 300 Nit < Brightness < 600 Nit -BLH: 600 Nit < Brightness < 1000 Nit -BLD: Brightness > 1000 Nit
6	Bezel	-B0: None
7	Headers	-H5: Horizontal Connectors -H6: Vertical Connectors
8	Protocol	-CH: HDMI interface
9	Voltage	-V5: 5.0V Input Voltage -VPT: Regulated 5V - 35V Input Voltage

## Power Options

Table 8: Powering Options

Option	Voltage Input
V5	USB Header
VPT	Barrel Jack/External Power Header

## Recommended Accessories

### HDMI Cable



Figure 4: HDMI Cable

**Part Number:**  
HDMI3FT or HDMI6FT

**Description:**  
3ft (1m) or 6ft (2m) HDMI Cable

### USB Cable



Figure 5: EXTMUSB3FT

**Part Number:**  
EXTMUSB3FT

**Description:**  
3ft (1m) Mini-B USB Cable

### Power Adaptor



Figure 6: PWR-ACDC-5V2A

**Part Number:**  
PWR-ACDC-5V2A

**Description:**  
9ft (2.7m) AC to DC power adapter with 2.1mm center positive barrel jack.

Input Voltage: 100-240V AC  
Output Voltage: 5V DC @ 2A

AC Plugs Included: North American (NEMA), Europlug (Type C), UK (Type G), Australia/China/New Zealand/Argentina (Type I)

## Support

Phone: 403.229.2737

Email: [support@matrixorbital.ca](mailto:support@matrixorbital.ca)

Manuals and Drivers: <http://www.matrixorbital.ca>

Forums: <http://www.lcdforums.com/forums>

## Contact

### Sales

Phone: 403.229.2737

Email: [sales@matrixorbital.ca](mailto:sales@matrixorbital.ca)

### Support

Phone: 403.229.2737

Email: [support@matrixorbital.ca](mailto:support@matrixorbital.ca)

### Online

Purchasing: [www.matrixorbital.com](http://www.matrixorbital.com)

Support: [www.matrixorbital.ca](http://www.matrixorbital.ca)