



Chipsmall Limited consists of a professional team with an average of over 10 year of expertise in the distribution of electronic components. Based in Hongkong, we have already established firm and mutual-benefit business relationships with customers from,Europe,America and south Asia,supplying obsolete and hard-to-find components to meet their specific needs.

With the principle of “Quality Parts,Customers Priority,Honest Operation,and Considerate Service”,our business mainly focus on the distribution of electronic components. Line cards we deal with include Microchip,ALPS,ROHM,Xilinx,Pulse,ON,Everlight and Freescale. Main products comprise IC,Modules,Potentiometer,IC Socket,Relay,Connector.Our parts cover such applications as commercial,industrial, and automotives areas.

We are looking forward to setting up business relationship with you and hope to provide you with the best service and solution. Let us make a better world for our industry!



## Contact us

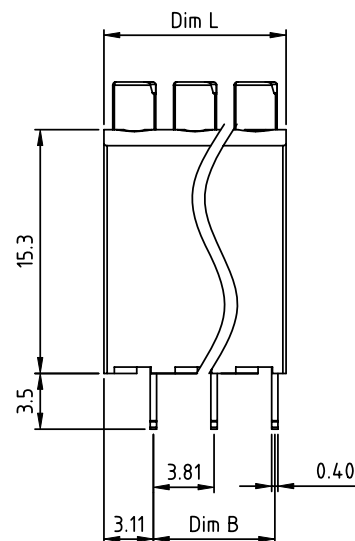
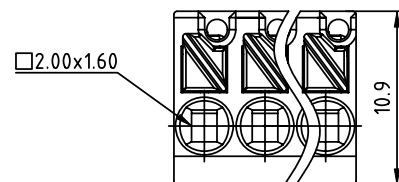
Tel: +86-755-8981 8866 Fax: +86-755-8427 6832

Email & Skype: [info@chipsmall.com](mailto:info@chipsmall.com) Web: [www.chipsmall.com](http://www.chipsmall.com)

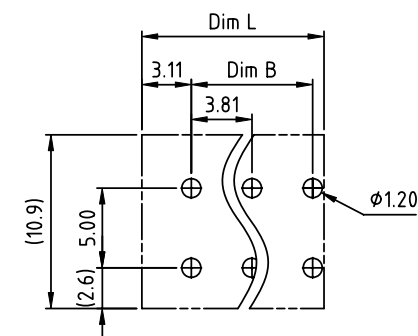
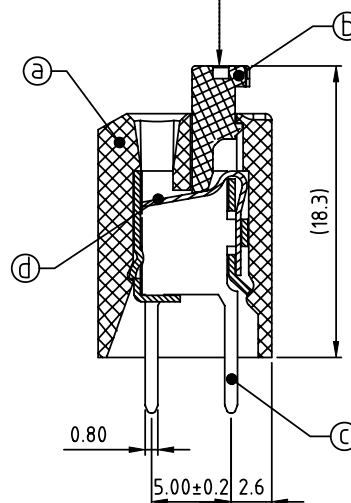
Address: A1208, Overseas Decoration Building, #122 Zhenhua RD., Futian, Shenzhen, China



|                |        |
|----------------|--------|
| PRODUCT NUMBER | PITCH  |
| HVxx30x000J0G  | 3.81mm |



The color of lever is consistent with body's





RECOMMENDED P.C.B LAYOUT  
TOP VIEW

Material:

- Item **a** Insulating body: Thermoplastic ( UL94V-0 )
- Item **b** Insulating lever: Thermoplastic ( UL94V-0 )
- Item **c** Solder pin: Brass, Tin plated
- Item **d** Spring clamp: Stainless steel

Electrical

- Voltage rating: 300V 500V
- Current rating: 8A 10A
- Wire range: 0.5-1.5mm<sup>2</sup>
- Solid wire(AWG): 16-20
- Stranded wire(AWG): 16-20
- Wire strip length: 8-9mm
- Withstanding Voltage: 1.6KV 1.89KV
- Operating temperature: -40°C to +115°C
- Soldering temperature: 260°C±5°C/5 Sec
- Safety Approval:  

N=Number of poles  
Dim L=Nx3.81  
Dim B=(N-1)x3.81

| Poles  | Tolerance  |
|--------|------------|
| 2-6p   | $\pm 0.15$ |
| 7-12p  | $\pm 0.20$ |
| 13-18p | $\pm 0.25$ |
| 19-24p | $\pm 0.30$ |

PART NO.: HV xx 30 x 000J0 G

| No. of poles | 0 | Body Color        | RoHS compliant<br>(lead<4%) |
|--------------|---|-------------------|-----------------------------|
| Solid block  | 2 | Black (RAL9005)   | In copper Alloy             |
| 02 2 poles   | 3 | Red (RAL3001/D)   |                             |
| 03 3 poles   | 4 | Orange(RAL2011/P) |                             |
| ...          | 5 | Yellow(RAL1018/A) |                             |
| ...          | 6 | Green(RAL6018/T)  |                             |
| 24 24 poles  | 7 | Blue (RAL5015/A)  |                             |
|              | 8 | Grey(RAL7004/P)   |                             |
|              | 9 | White(RAL1102)    |                             |
|              | C | Multiple colors   |                             |

[illegible]