



Chipsmall Limited consists of a professional team with an average of over 10 year of expertise in the distribution of electronic components. Based in Hongkong, we have already established firm and mutual-benefit business relationships with customers from,Europe,America and south Asia,supplying obsolete and hard-to-find components to meet their specific needs.

With the principle of “Quality Parts,Customers Priority,Honest Operation,and Considerate Service”,our business mainly focus on the distribution of electronic components. Line cards we deal with include Microchip,ALPS,ROHM,Xilinx,Pulse,ON,Everlight and Freescale. Main products comprise IC,Modules,Potentiometer,IC Socket,Relay,Connector.Our parts cover such applications as commercial,industrial, and automotives areas.

We are looking forward to setting up business relationship with you and hope to provide you with the best service and solution. Let us make a better world for our industry!



## Contact us

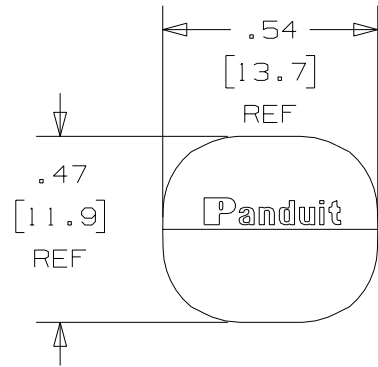
Tel: +86-755-8981 8866 Fax: +86-755-8427 6832

Email & Skype: info@chipsmall.com Web: www.chipsmall.com

Address: A1208, Overseas Decoration Building, #122 Zhenhua RD., Futian, Shenzhen, China



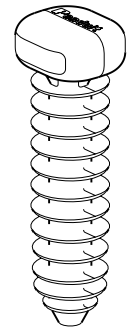
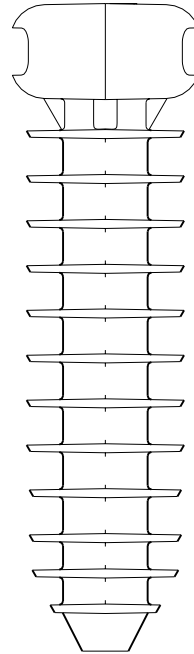
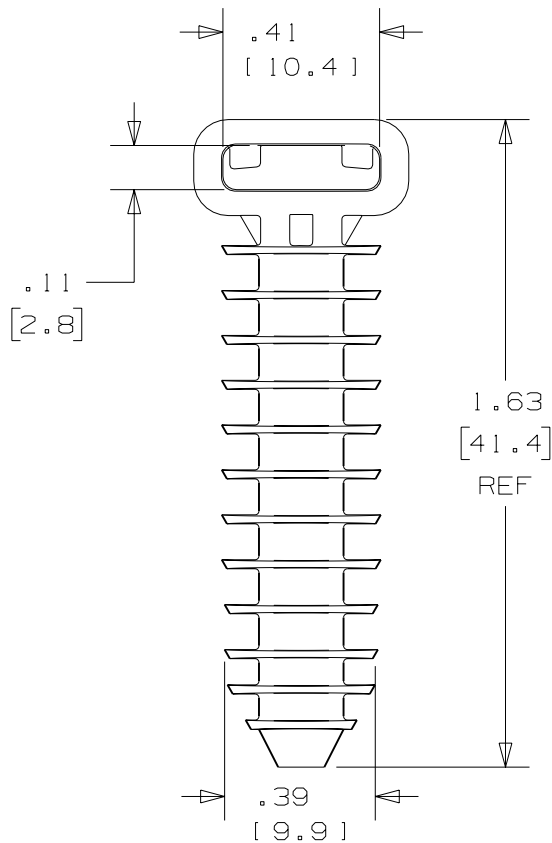
THIS COPY IS PROVIDED ON A RESTRICTED BASIS AND IS NOT TO BE USED IN ANY WAY DETRIMENTAL TO THE INTERESTS OF PANDUIT CORP.



PANDUIT PART NO.	USE WITH CABLE TIE	HOLE DIAMETER in [mm]	WEIGHT lbs [g] per 100 pcs
HVMPM-08-___	HV , IT	.312 [8.0]	.36 [165.3]
HVMPM32-___			

NOTES:

- SEE CURRENT PRICE SHEET FOR PART NUMBER SUFFIX DESIGNATION FOR PACKAGE SIZE.



ISOMETRIC  
1:1

DIMENSIONS IN BRACKETS ARE METRIC [ mm ]		
CAD FILENAME/LAYERS G00239MB_PB_HVMPM_01		
<b>PANDUIT</b> CORP. TINLEY PARK, ILLINOIS		
HYPER-V MASONRY PUSH MOUNT HVMPM_---		
UNLESS OTHERWISE SPECIFIED, DIMENSIONAL TOLERANCES ARE: (.X) ±0.05 [1.3] (.XXX) ±0.010 [0.25] (.XX) ±0.02 [0.5] ANGLES ±5°		UNLESS OTHERWISE SPECIFIED, ALL DIMENSIONS ARE GIVEN IN INCHES, THIRD ANGLE PROJECTION.
DRAWN BY TMSA	MAT'L: IMPACT MODIFIED NYLON 6/6 WEATHER RESISTANT BLACK	SCALE 2:1
DATE 02-07-06	CHK'D	DRAWING NO. G00239MB
		DWG A SIZE

REV	DATE	BY	CHK	DESCRIPTION	ECN	R	CUST	SUP
I	10/6/06	JAD		ADD HVMPM32	GB0239MB	I		
R	5-22-06	TMSA		INITIAL RELEASE	GB0239MB	R		