



Chipsmall Limited consists of a professional team with an average of over 10 year of expertise in the distribution of electronic components. Based in Hongkong, we have already established firm and mutual-benefit business relationships with customers from,Europe,America and south Asia,supplying obsolete and hard-to-find components to meet their specific needs.

With the principle of “Quality Parts,Customers Priority,Honest Operation,and Considerate Service”,our business mainly focus on the distribution of electronic components. Line cards we deal with include Microchip,ALPS,ROHM,Xilinx,Pulse,ON,Everlight and Freescale. Main products comprise IC,Modules,Potentiometer,IC Socket,Relay,Connector.Our parts cover such applications as commercial,industrial, and automotives areas.

We are looking forward to setting up business relationship with you and hope to provide you with the best service and solution. Let us make a better world for our industry!



Contact us

Tel: +86-755-8981 8866 Fax: +86-755-8427 6832

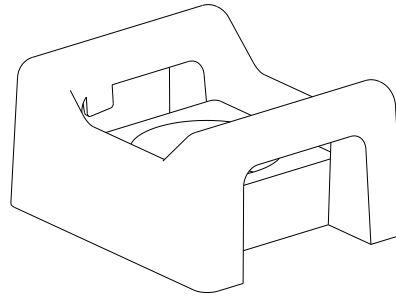
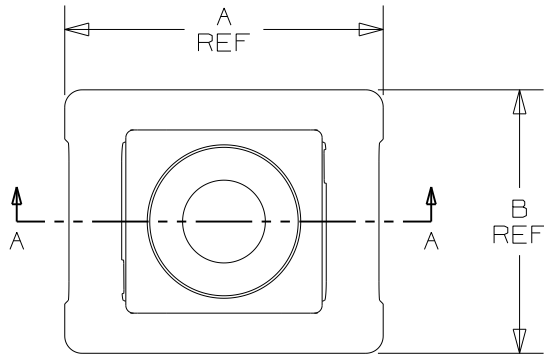
Email & Skype: info@chipsmall.com Web: www.chipsmall.com

Address: A1208, Overseas Decoration Building, #122 Zhenhua RD., Futian, Shenzhen, China

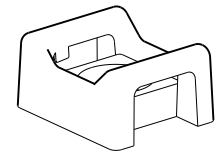


THIS COPY IS PROVIDED ON A RESTRICTED BASIS AND IS NOT TO BE USED IN ANY WAY DETRIMENTAL TO THE INTERESTS OF PANDUIT CORP.

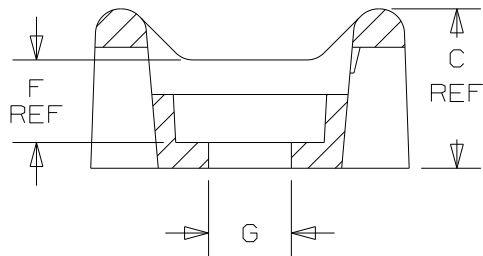
PANDUIT PART NO.	RECOMMENDED FASTENER	'A' REF	'B' REF	'C' REF	'D'	'E'	'F' REF	'G'	WEIGHT lbs (g) per 100 pcs	USE WITH CABLE TIE
HVTM-06-__	M6 SCREW	.81 [20.6]	.68 [17.3]	.41 [10.4]	.40 [10.2]	.11 [2.8]	.21 [5.3]	.24 [6.1]	.36 [165]	HV , IT



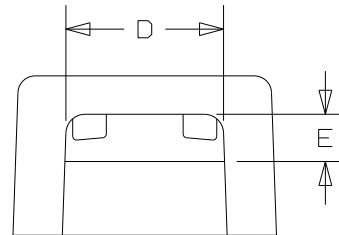
NOTES:
1. SEE CURRENT PRICE SHEET FOR PART
NUMBER SUFFIX DESIGNATION FOR
PACKAGE SIZE.



ISOMETRIC
1:1



SECTION A-A



DIMENSIONS IN BRACKETS ARE METRIC [mm]

CAD FILENAME/LAYERS G03597JS_DC_G00239MA_04/00

PANDUIT

CORP.

TINLEY PARK, ILLINOIS

HYPER-V TIE MOUNT (HVTM-____)

UNLESS OTHERWISE SPECIFIED,
DIMENSIONAL TOLERANCES ARE:
(.X) ±0.05 [1.3] (.XXX) ±0.010 [0.25]
(.XX) ±0.02 [0.5] ANGLES ±5°

UNLESS OTHERWISE SPECIFIED,
ALL DIMENSIONS ARE GIVEN
IN INCHES, THIRD ANGLE
PROJECTION.

DRAWN BY
KLN

MAT'L:
NYLON 6/6
WEATHER RESISTANT
BLACK

SCALE
2:1

DATE
02-07-06
CHK'D

DRAWING NO.
GB0239MA

DWG
A
SIZE

4	2/01/11	BWG	MJVE	REMOVED HVTM-05 AND HVMT3S10.	GB0239MA	4	PBC		
REV	DATE	BY	CHK	DESCRIPTION	ECN - R	CUST	SUP		