



Chipsmall Limited consists of a professional team with an average of over 10 year of expertise in the distribution of electronic components. Based in Hongkong, we have already established firm and mutual-benefit business relationships with customers from,Europe,America and south Asia,supplying obsolete and hard-to-find components to meet their specific needs.

With the principle of "Quality Parts,Customers Priority,Honest Operation,and Considerate Service",our business mainly focus on the distribution of electronic components. Line cards we deal with include Microchip,ALPS,ROHM,Xilinx,Pulse,ON,Everlight and Freescale. Main products comprise IC,Modules,Potentiometer,IC Socket,Relay,Connector.Our parts cover such applications as commercial,industrial, and automotives areas.

We are looking forward to setting up business relationship with you and hope to provide you with the best service and solution. Let us make a better world for our industry!



## Contact us

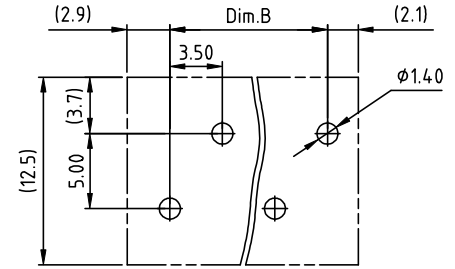
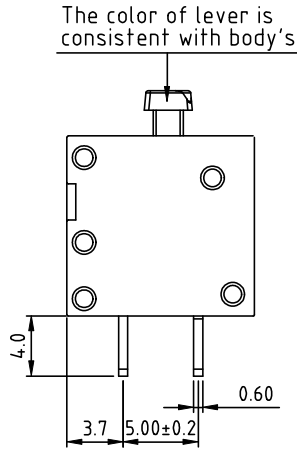
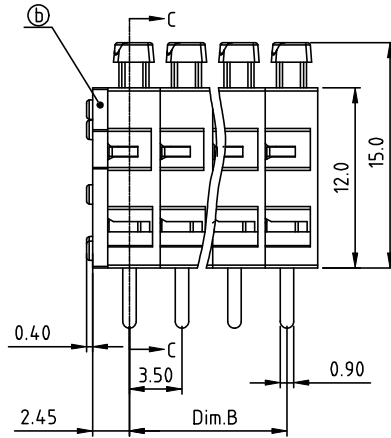
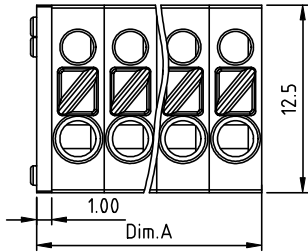
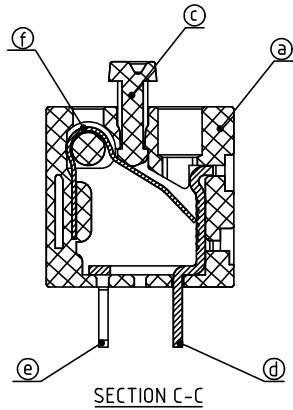
Tel: +86-755-8981 8866 Fax: +86-755-8427 6832

Email & Skype: info@chipsmall.com Web: www.chipsmall.com

Address: A1208, Overseas Decoration Building, #122 Zhenhua RD., Futian, Shenzhen, China



PRODUCT NUMBER	PITCH
HXxx20x100J0G	3.50 mm



RECOMMENDED P.C.B LAYOUT  
TOP VIEW

Material:

- Item (a) Terminal housing: Thermoplastic (UL94V-0)
- Item (b) Terminal cover: Thermoplastic (UL94V-0)
- Item (c) Lever: Thermoplastic (UL94V-0)
- Item (d) Solder pin (Right): Brass, Tin plated
- Item (e) Solder pin (Left): Brass, Tin plated
- Item (f) Wire guard: Stainless steel

Electrical cULus

- Voltage rating: AC 300V
- Current rating: 10A
- Wire range:
  - Solid wire(AWG): 16-26
  - Stranded wire(AWG): 16-26
  - Wire strip length: 7-8mm
- Withstanding Voltage: 1.6KV
- Operating temperature: -40°C to +115°C
- Soldering temperature: 260°C±5°C/5 Sec
- Safety Approval:

The 1st pole

PART NO.: HX xx 20 x 1 00J0 G

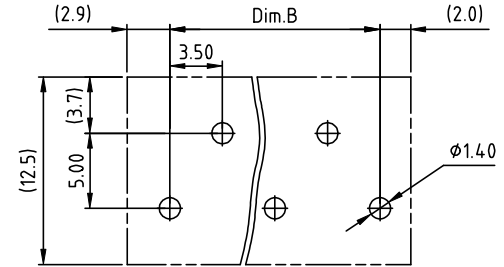
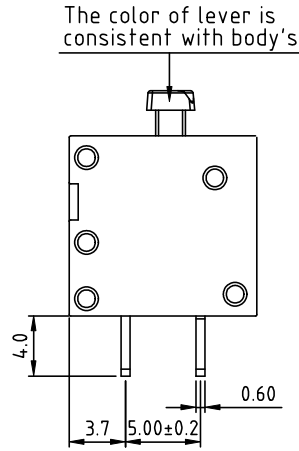
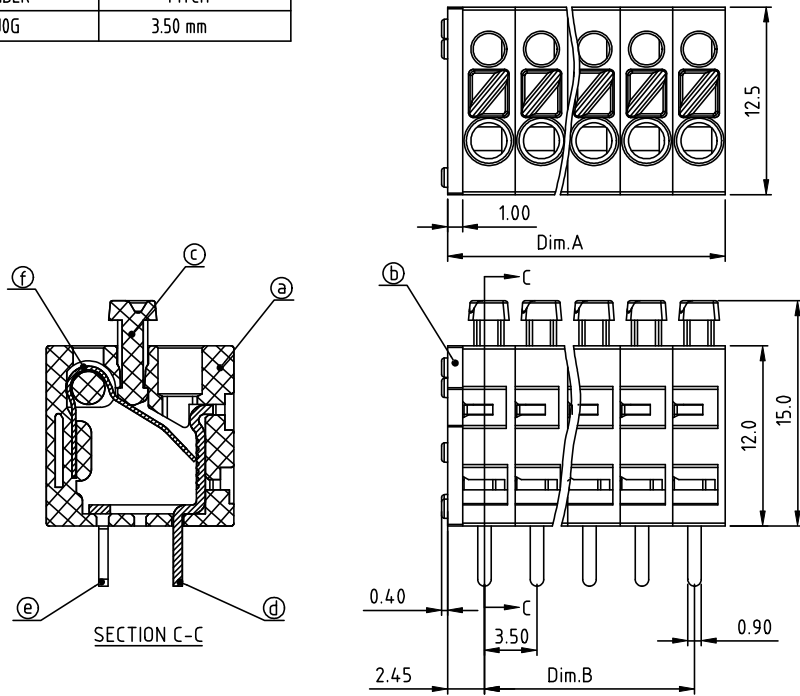
N=Number of poles  
Dim.A=N×3.5+1.0  
Dim.B=(N-1)×3.5

Poles	Dim.A	Dim.B
2p\4p\6p	±0.20	±0.15
8p\10p\12p	±0.25	±0.20
14p\16p\18p	±0.30	±0.25
20p\22p\24p	±0.40	±0.30

End stackable	No. of poles	Color	RoHS compliant
0	2	Black (RAL9005)	(lead<4%) In copper Alloy
02	2 poles	Red (RAL3001/D)	
04	4 poles	Orange(RAL2011/P)	
...	...	Yellow(RAL1018/A)	
24	24 poles	Green(RAL6018/T)	
		Blue (RAL5015/A)	
		8 Grey(RAL7004/D)	
		9 White(RAL1102)	
		C Multiple colors	

mat'l. code				surface ASME Y14.5		tolerance ASME Y14.5		projection		product family TERMINAL BLOCK			
ltr ecn no dr date				tolerances unless otherwise specified		X.±0.5		MM		title TERMINAL BLOCK SPRING CLAMP,90D WIRE INLET INTERLACE CONTACT,A TYPE,EVEN POLES			
				angles X'±1'		X.XX±0.3		scale		sheet 1 of 2 size			
						X.XX±0.1		FCI		HXXx20x100J0G A4			
				dr EVIN ZHONG 052314						type CUSTOMER Drawing			
				enrg EVIN ZHONG 052314									
				chr HANKE FENG 052314									
				appd SHI JUN 052314									
sheet index		revision sheet		A 1									

PRODUCT NUMBER	PITCH
HXxx20x100J0G	3.50 mm



RECOMMENDED P.C.B LAYOUT  
TOP VIEW

Material:

- Item (a) Terminal housing: Thermoplastic (UL94V-0)
- Item (b) Terminal cover: Thermoplastic (UL94V-0)
- Item (c) Lever: Thermoplastic (UL94V-0)
- Item (d) Solder pin (Right): Brass, Tin plated
- Item (e) Solder pin (Left): Brass, Tin plated
- Item (f) Wire guard: Stainless steel

Electrical

- Voltage rating: AC 300V
- Current rating: 10A
- Wire range:
- Solid wire(AWG): 16-26
- Stranded wire(AWG): 16-26
- Wire strip length: 7-8mm
- Withstanding Voltage: 1.6KV
- Operating temperature: -40°C to +115°C
- Soldering temperature: 260°C±5°C/5 Sec
- Safety Approval: cULus

N=Number of poles  
Dim.A=N×3.5+1.0  
Dim.B=(N-1)×3.5

Poles	Dim.A	Dim.B
3p\5p	±0.20	±0.15
7p\9p\11p	±0.25	±0.20
13p\15p\17p	±0.30	±0.25
19p\21p\23p	±0.40	±0.30

PART NO.: HX xx 20 x 1 00J0 G

- |                 |                       |   |
|-----------------|-----------------------|---|
| End stackable 0 | Color Black (RAL9005) | RoHS compliant (lead<4%)<br>In copper Alloy |
| No. of poles 2  | Red (RAL3001/D)       |   |
| 03 3 poles      | 3 Orange(RAL2011/P)   |   |
| 05 5 poles      | 4 Yellow(RAL1018/A)   |   |
| ... ..          | 5 Green(RAL6018/T)    |   |
| 23 23 poles     | 6 Blue (RAL5015/A)    |   |
|                 | 8 Grey(RAL7004/P)     |   |
|                 | 9 White(RAL1102)      |   |
|                 | C Multiple colors     |   |

mat'l. code		surface ASME Y14.5	tolerance ASME Y14.5	projection	product family
ltr	ecn no	dr	date	MM	TERMINAL BLOCK
tolerances unless otherwise specified				MM	title
angles	X.±0.5			scale	TERMINAL BLOCK
flat	X.X±0.3				SPRING CLAMP,90D WIRE INLET
X±1°	X.XX±0.1				INTERLACE CONTACT A TYPE,ODD POLES
dr	EVIN ZHONG	052314			dwg no
enr	EVIN ZHONG	052314			sheet 2 of 2 size
chr	HANKE FENG	052314			HXxx20x100J0G
appd	SHI JUN	052314			A4
sheet index	revision sheet	A	2		type
					CUSTOMER Drawing