



Chipsmall Limited consists of a professional team with an average of over 10 year of expertise in the distribution of electronic components. Based in Hongkong, we have already established firm and mutual-benefit business relationships with customers from,Europe,America and south Asia,supplying obsolete and hard-to-find components to meet their specific needs.

With the principle of "Quality Parts,Customers Priority,Honest Operation,and Considerate Service",our business mainly focus on the distribution of electronic components. Line cards we deal with include Microchip,ALPS,ROHM,Xilinx,Pulse,ON,Everlight and Freescale. Main products comprise IC,Modules,Potentiometer,IC Socket,Relay,Connector.Our parts cover such applications as commercial,industrial, and automotives areas.

We are looking forward to setting up business relationship with you and hope to provide you with the best service and solution. Let us make a better world for our industry!



Contact us

Tel: +86-755-8981 8866 Fax: +86-755-8427 6832

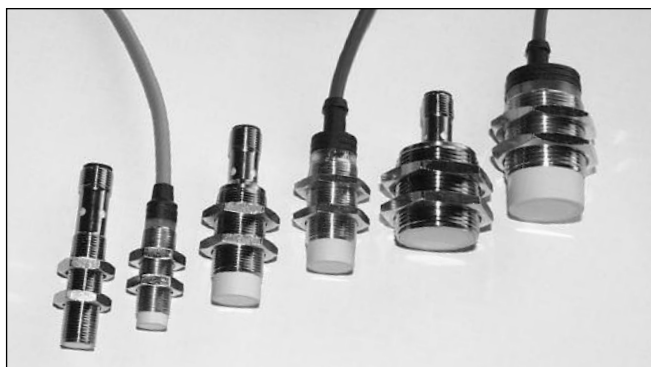
Email & Skype: info@chipsmall.com Web: www.chipsmall.com

Address: A1208, Overseas Decoration Building, #122 Zhenhua RD., Futian, Shenzhen, China



Proximity Sensors Inductive Extended Range, Nickel Plated Brass Housing Types IA, DC, M12, M18 and M30, 2-wire

CARLO GAVAZZI



- Sensing distance: 4 to 22 mm
- Flush and non-flush types
- Power supply: 10 to 40 VDC
- Output: Transistor
- Make or break switching
- Protection: Reverse polarity, short-circuit and transients
- 2 m cable or plug M12
- Diameter: M12, M18, M30



Product Description

Proximity switch M12, M18 and M30 in nickel-plated brass housings. Made in accordance with Euronorm EN 60 947-5-2.

Ordering Key

IA12ASF04DOM1

Cap. proximity switch	_____
Housing style	_____
Housing size	_____
Housing material	_____
Housing length	_____
Detection principle	_____
Sensing distance	_____
Output type	_____
Output configuration	_____
Connection	_____

Type Selection

Housing diameter	Body style	Connection	Rated operating dist. (S _n)	Ordering no. 2 wire DC Normally open	Ordering no. 2 wire DC Normally closed
M12	Short	Cable	4 mm ¹⁾	IA 12 DSF 04 DO	IA 12 DSF 04 DC
M12	Short	Plug	4 mm ¹⁾	IA 12 ASF 04 DO M1	IA 12 ASF 04 DC M1
M12	Short	Cable	8 mm ²⁾	IA 12 DSN 08 DO	IA 12 DSN 08 DC
M12	Short	Plug	8 mm ²⁾	IA 12 ASN 08 DO M1	IA 12 ASN 08 DC M1
M18	Short	Cable	8 mm ¹⁾	IA 18 DSF 08 DO	IA 18 DSF 08 DC
M18	Short	Plug	8 mm ¹⁾	IA 18 ASF 08 DO M1	IA 18 ASF 08 DC M1
M18	Short	Cable	14 mm ²⁾	IA 18 DSN 14 DO	IA 18 DSN 14 DC
M18	Short	Plug	14 mm ²⁾	IA 18 ASN 14 DO M1	IA 18 ASN 14 DC M1
M30	Short	Cable	15 mm ¹⁾	IA 30 DSF 15 DO	IA 30 DSF 15 DC
M30	Short	Plug	15 mm ¹⁾	IA 30 ASF 15 DO M1	IA 30 ASF 15 DC M1
M30	Short	Cable	22 mm ²⁾	IA 30 DSN 22 DO	IA 30 DSN 22 DC
M30	Short	Plug	22 mm ²⁾	IA 30 ASN 22 DO M1	IA 30 ASN 22 DC M1

¹⁾ For flush mounting in metal

²⁾ For non-flush mounting in metal

Specifications

Rated operational volt. (U _e) (U _B)	12 to 36 VDC 10 to 40 VDC (ripple included)	Transient voltage	≤ 1 kV/0.5 J
Ripple	≤ 10%	EMC	Approved according to EN 50 080, EN 50 081
Rated operational current (I _e) Continuous	≤ 5-100 mA	Power ON delay	< 50 ms
No-load supply current (I)	≤ 0.8 mA	Frequency of operating cycles (f)	IA12xSF 1000 Hz IA12xSN 800 Hz IA18xSF 500 Hz IA18xSN 400 Hz IA30xSF 400 Hz IA30xSN 200 Hz
Voltage drop (U _d)	≤ 3 VDC at max. load		
Protection	Reverse polarity, short-circuit, transients		

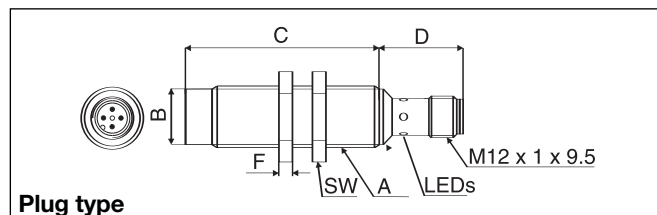
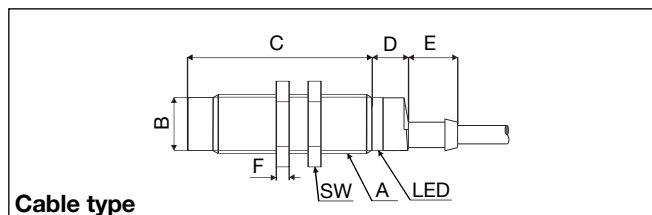


Specifications (cont.)

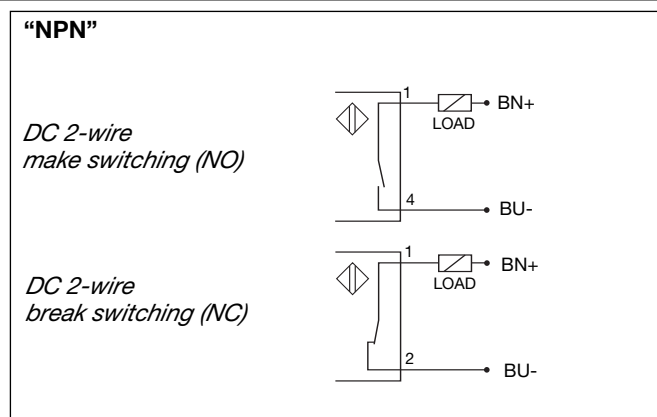
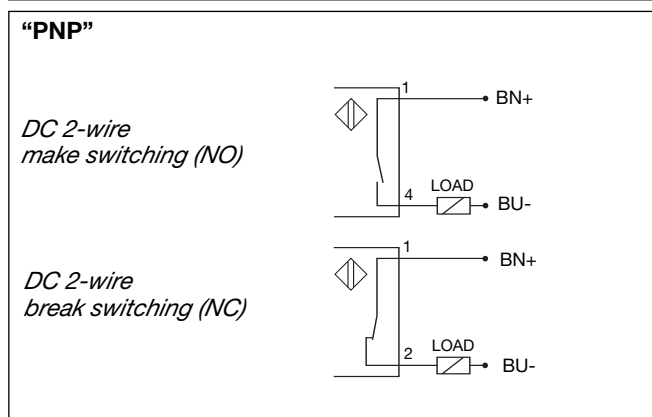
Indication	LED, yellow	Connection	
Repeat accuracy (R)	≤ 10%	Cable	2 m, 2 x 0.5 mm ² , grey PVC, oil proof
Hysteresis (H) (Differential travel)	1 to 20% of sensing distance	Plug	M12 x 1
Assured operating dist. (S_a)	0 ≤ S _a ≤ 0.77 S _n	Cables for plug (-1)	CONH1A serie
Effective operating dist. (S_r)	0.9 x S _n ≤ S _r ≤ 1.1 x S _n	Weight (cable excluded)	IA 12xxx 20 g IA 18xxF 26 g IA 18xxN 30 g IA 30xxF 50 g IA 30xxN 80 g
Usable operating dist. (S)	0.85 x S _r ≤ S _u ≤ 1.15 x S _r	Tightening torque	IA 12 (x) 7 Nm 15 Nm IA 18 27.5 Nm IA 30 50 Nm
Ambient temperature		Approvals	CSA, UL
Operating	-25° to +70°C (-13° to +158°F)	CE-marking	Yes
Storage	-30° to +80°C (-22° to +176°F)		
Degree of protection	IP 67 (Nema 1, 3, 4, 6, 13)		
Housing material			
Body	In nickel-plated brass		
Front	Grey thermoplastic polyester		
Back	Black polyester (cable) In nickel-plated brass (plug)		

Dimensions

Type	A	B Ø mm	C mm	D mm	E mm	F mm	SW mm
IA 12 DSF 04 D.	M 12 x 1 x 38	10.7	38	11	5.0	4	17
IA 12 ASF 04 D. M1	M 12 x 1 x 38	10.7	38	25.2		4	17
IA 12 DSN 08 D.	M 12 x 1 x 38	10.7	42	11	5.0	4	17
IA 12 ASN 08 D. M1	M 12 x 1 x 38	10.7	42	25.2		4	17
IA 18 DSF 08 D.	M 18 x 1 x 30	16.7	30	11.6	15.4	4	24
IA 18 ASF 08 D. M1	M 18 x 1 x 30	16.7	30	25.0		4	24
IA 18 DSN 14 D.	M 18 x 1 x 30	16.7	38	11.6	15.4	4	24
IA 18 ASN 14 D. M1	M 18 x 1 x 30	16.7	38	25.0		4	24
IA 30 DSF 15 D.	M 30 x 1.5 x 30	28	30	13.6	15.4	5	36
IA 30 ASF 15 D. M1	M 30 x 1.5 x 30	28	30	25.0		5	36
IA 30 DSN 22 D.	M 30 x 1.5 x 30	28	42	13.6	15.4	5	36
IA 30 ASN 22 D. M1	M 30 x 1.5 x 30	28	42	25.0		5	36



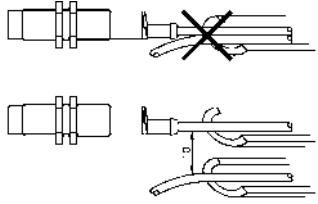
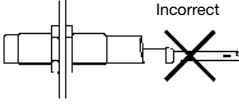
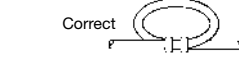
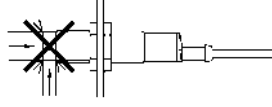
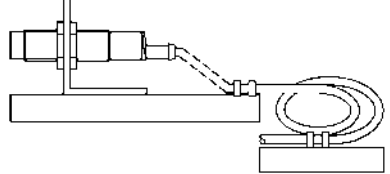
Wiring Diagrams



Power Supplies

Power supplies VDC: > SS 130/140.

Installation Hints

<p><i>To avoid interference from inductive voltage/current peaks, separate the prox. switch power cables from any other power cables, e.g. motor, contactor or solenoid cables</i></p> 	<p><i>Relief of cable strain</i></p> <p>Incorrect</p>  <p>Correct</p>  <p>The cable should not be pulled</p>	<p><i>Protection of the sensing face</i></p>  <p>A proximity switch should not serve as mechanical stop</p>	<p><i>Switch mounted on mobile carrier</i></p>  <p>Any repetitive flexing of the cable should be avoided</p>
--	--	---	---