



Chipsmall Limited consists of a professional team with an average of over 10 year of expertise in the distribution of electronic components. Based in Hongkong, we have already established firm and mutual-benefit business relationships with customers from,Europe,America and south Asia,supplying obsolete and hard-to-find components to meet their specific needs.

With the principle of “Quality Parts,Customers Priority,Honest Operation,and Considerate Service”,our business mainly focus on the distribution of electronic components. Line cards we deal with include Microchip,ALPS,ROHM,Xilinx,Pulse,ON,Everlight and Freescale. Main products comprise IC,Modules,Potentiometer,IC Socket,Relay,Connector.Our parts cover such applications as commercial,industrial, and automotives areas.

We are looking forward to setting up business relationship with you and hope to provide you with the best service and solution. Let us make a better world for our industry!



## Contact us

Tel: +86-755-8981 8866 Fax: +86-755-8427 6832

Email & Skype: info@chipsmall.com Web: www.chipsmall.com

Address: A1208, Overseas Decoration Building, #122 Zhenhua RD., Futian, Shenzhen, China



# IA series

Low profile pushbutton switches for harsh environments • bushing Ø 16 mm • momentary



## DISTINCTIVE FEATURES

Resistant to frost, sand and hydrocarbons

Tactile feedback

Front panel sealed to IP65 and IP67



## ENVIRONMENTAL SPECIFICATIONS

- Front panel sealing :  
IP65 and IP67 acc. to IEC 60529
- Salt spray : IEC 512-6, test 11f
- Operating temperature : -20 °C to +65 °C (-4 °F to +149 °F)



## ELECTRICAL SPECIFICATIONS

- Max. current/voltage rating with resistive load : 2 A 24 VDC
- Initial contact resistance : 100 mΩ max.
- Insulation resistance : 100 MΩ min. at 500 VDC
- Dielectric strength : 500 Vrms
- Electrical life at full load : 1,000,000 cycles



## GENERAL SPECIFICATIONS

- Panel thickness : 7 mm (.276) max.
- Total travel : 1.5 mm (.059) ± 0.3 mm
- Typical operating force : 7 N ± 2 N
- Low level or mechanical life : 1,000,000 cycles
- Torque : 0.5 to 1 Nm max. applied to nut



## MATERIALS

- Case/bushing : thermoplastic
- Actuator : polyurethane
- Contacts : silver, gold plated
- Multi-wire leads AWG20, section 0.6 mm<sup>2</sup>.
- Terminal seal : epoxy

The company reserves the right to change specifications without notice.



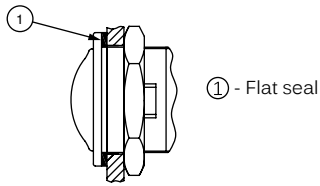
# IA series

Low profile pushbutton switches for harsh environments • bushing Ø 16 mm • momentary

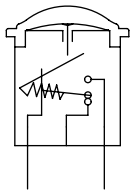


## PANEL MOUNTING

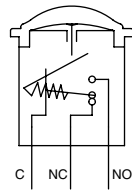
- Panel cut-out Ø 16.2 mm (.657)
- Min. pitch for matrix mounting :
  - with standard hex nut : 27 x 27 mm (1.062 x 1.062)
  - with knurled nut U3327: 20 x 20 mm (.787x.787)



## ELECTRICAL FUNCTIONS



Function 3 (NO)



Function 5 (NC/NO)

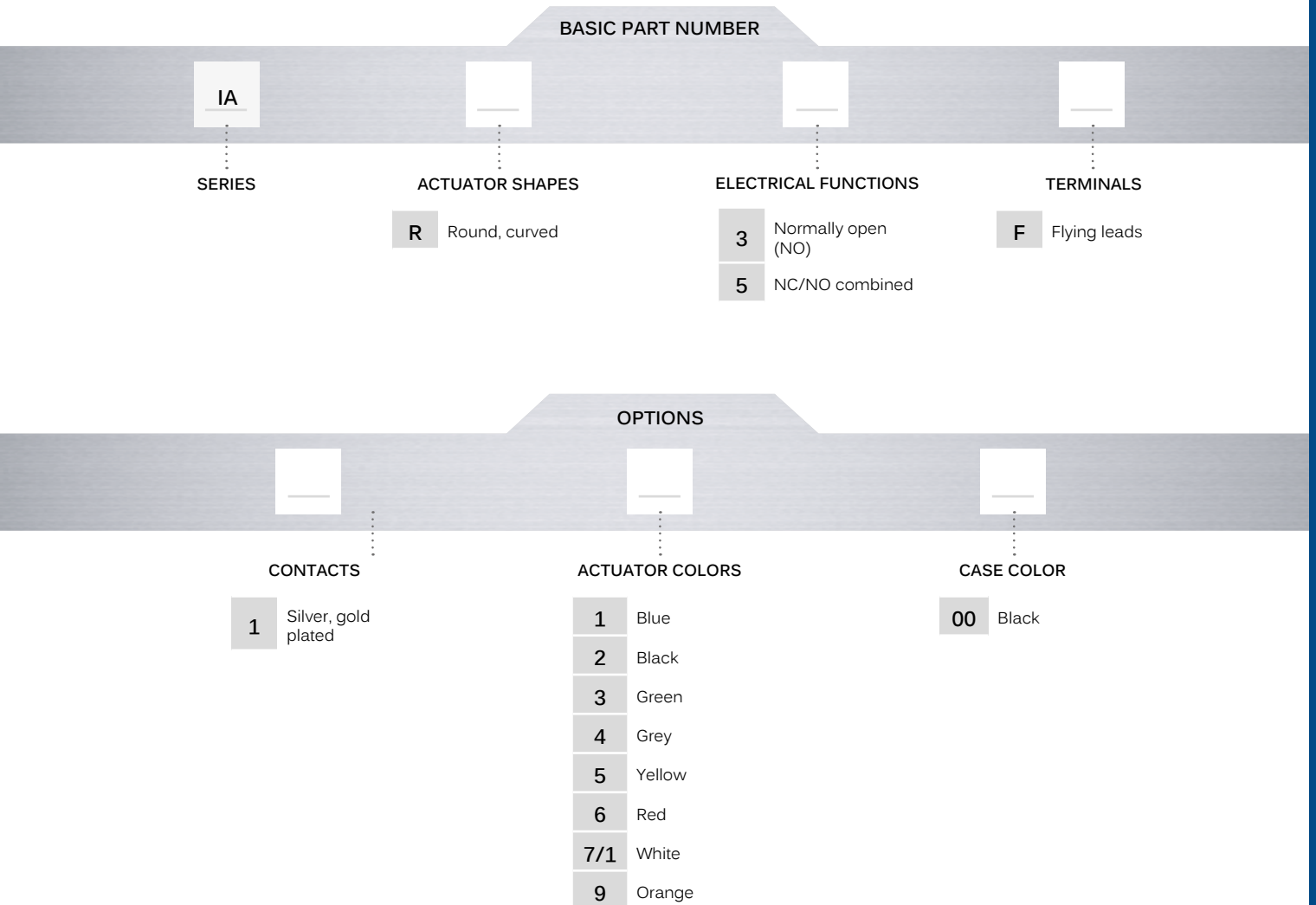


# IA series

Low profile pushbutton switches for harsh environments • bushing Ø 16 mm • momentary



## BUILD YOUR PART NUMBER



## ABOUT THIS SERIES

On the following pages, you will find successively basic part numbers of switches and options in the same order as in above chart.



**A sealing boot** is available to protect the switches against frost and sand. See "Sealing Boots" section of website.



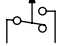
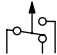
**Mounting accessories** : Standard hardware supplied : 1 hex nut 19 mm (.748) across flats and 1 flat seal. Knurled nut U3327 available on request.

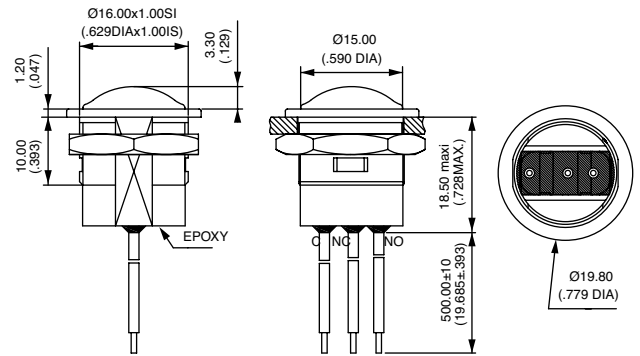
# IA series

Low profile pushbutton switches for harsh environments • bushing Ø 16 mm • momentary

## MODELS



- IAR3F**  Normally open (NO)
- IAR5F**  NC/NO combined



Wire colors (NC/NO) : black = common, brown = NC, blue = NO  
NO model has 2 terminals only.

### CONTACT MATERIAL



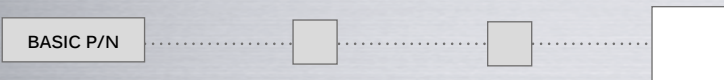
- 1 Silver, gold plated

### ACTUATOR COLORS



- 1 Blue
- 2 Black
- 3 Green
- 4 Grey
- 5 Yellow
- 6 Red
- 7/1 White
- 9 Orange

### CASE COLORS



- 00 Black