



Chipsmall Limited consists of a professional team with an average of over 10 year of expertise in the distribution of electronic components. Based in Hongkong, we have already established firm and mutual-benefit business relationships with customers from,Europe,America and south Asia,supplying obsolete and hard-to-find components to meet their specific needs.

With the principle of “Quality Parts,Customers Priority,Honest Operation,and Considerate Service”,our business mainly focus on the distribution of electronic components. Line cards we deal with include Microchip,ALPS,ROHM,Xilinx,Pulse,ON,Everlight and Freescale. Main products comprise IC,Modules,Potentiometer,IC Socket,Relay,Connector.Our parts cover such applications as commercial,industrial, and automotives areas.

We are looking forward to setting up business relationship with you and hope to provide you with the best service and solution. Let us make a better world for our industry!



## Contact us

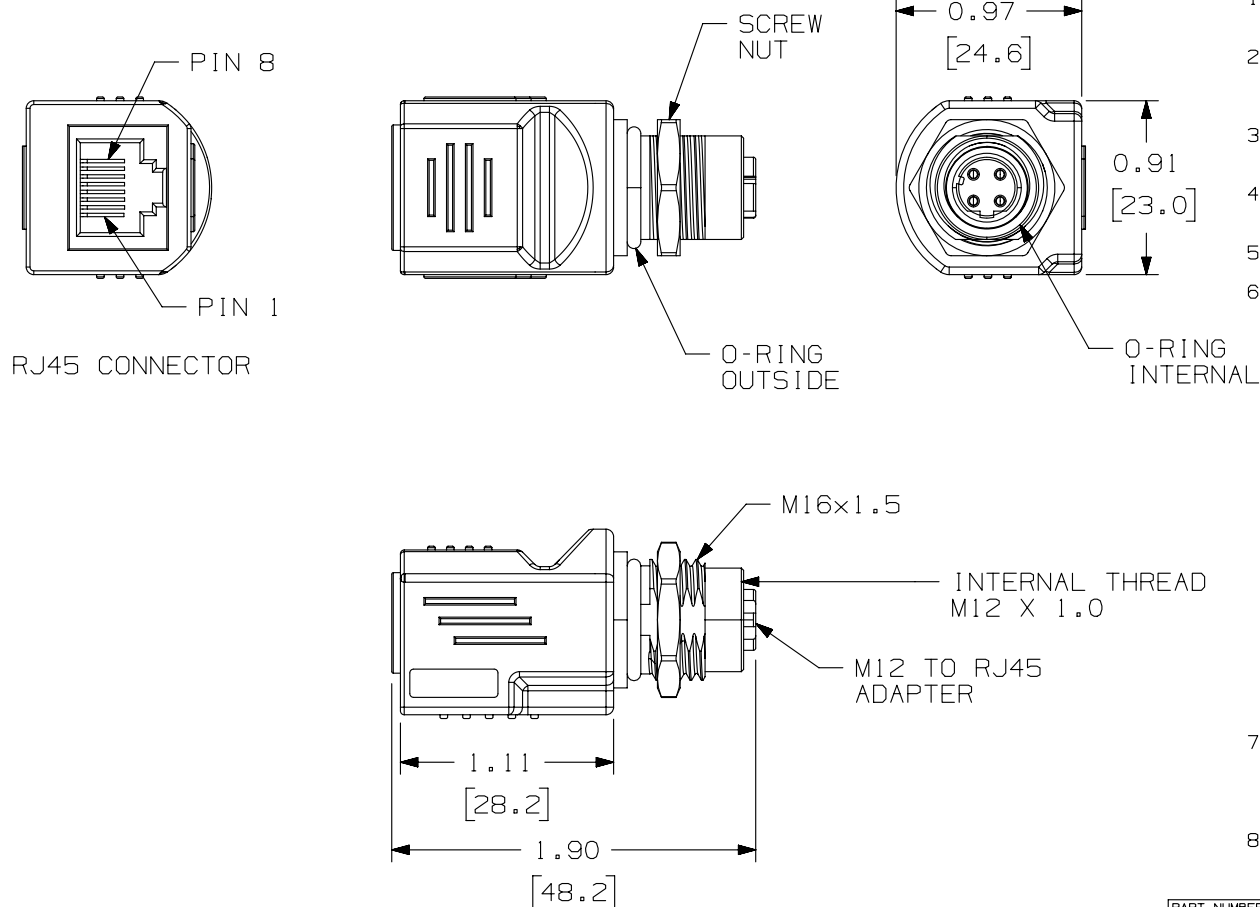
Tel: +86-755-8981 8866 Fax: +86-755-8427 6832

Email & Skype: [info@chipsmall.com](mailto:info@chipsmall.com) Web: [www.chipsmall.com](http://www.chipsmall.com)

Address: A1208, Overseas Decoration Building, #122 Zhenhua RD., Futian, Shenzhen, China


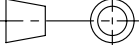


THIS COPY IS PROVIDED ON A RESTRICTED BASIS AND IS NOT TO BE USED IN ANY WAY DETRIMENTAL TO THE INTERESTS OF PANDUIT CORP.

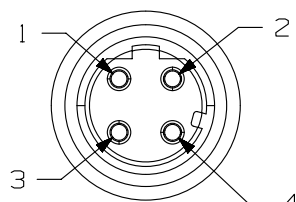


NOTES :

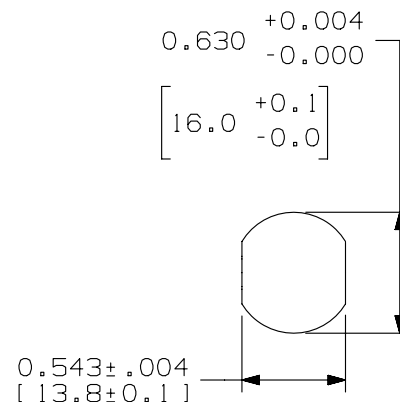
- NOTES:
1. CONSTRUCTED TO MEET THE FOLLOWING STANDARDS:
    - A. FEMALE M12 D-CODE END: IEC 61076-2-101
    - B. M12 TO RJ45: ANSI/TIA-568-C.2
  2. THE TRANSMISSION PERFORMANCE IS 10/100MBIT ETHERNET ACCORDING TO IEEE 802.3
    - A. THE PRODUCT WAS TESTED ACCORDING TO ANSI/TIA-568-C.2 PERMANENT LINK, CATEGORY 5E
  3. MEETS THE FOLLOWING CATEGORIES:
    - A. CATEGORY 5/CLASS D PER ISO/IEC 11801 DIN 50173-1
    - B. CATEGORY 5E PER ANSI/TIA/EIA-568-C.2
  4. ELECTRICAL:
    - A. WORKING VOLTAGE: 50V
    - B. WORKING CURRENT: 1A
  5. MECHANICAL:
    - A. PANEL THICKNESS: 0.197" [5.0MM] MAXIMUM
  6. CONSTRUCTION:
    - A. ALL MATERIALS AND COMPONENTS USED MUST MEET THE MATERIAL RESTRICTIONS OF RoHS, (EUROPEAN DIRECTIVE 2011/65/EU ON THE RESTRICTION OF HAZARDOUS SUBSTANCES) AS PROPOSED BY THE RoHS TECHNICAL ADAPTATION COMMITTEE.
    - B. COMPONENT MATERIALS:
      1. CONNECTOR HOUSING: NYLON/GF BLACK
      2. PCB: FR4, 0.8t
      3. JACK: PBT, BLACK
      4. O-RING OUTSIDE: VITON BLACK
      5. O-RING INSIDE: VITON GREEN
      6. NUT (ZN) ALLOY, (NI) PLATED
      7. SHIELD CONTACT: (CU) ALLOY PLATED WITH (NI)
      8. CONTACTS (M12): (CU) ALLOY
      9. CONTACTS (RJ45): PHOSPHOR BRONZE
  10. CONTACT FINISH (M12): (AU) OVER (NI) PLATED
    11. CONTACT FINISH (RJ45): (AU) ON CONTACT AREA PLATED, (SN) PLATED OVER (NI) ON SOLDER AREA PLATED
  7. ENVIRONMENTAL:
    - A. OPERATING TEMPERATURE: -13° F--+176° C (-25° C--+80° C)
    - B. STORAGE TEMPERATURE: -40° F--+176° F (-40° C--+80° C)
    - C. INGRESS PROTECTION RATING (IP): IP65 (PLASTIC MOLDING/IP68 (M12)
  8. 0.78 LBS/10 PCS (357.00g/10 PCS)

PART NUMBER 1CAM12DRJS		PRODUCT SPEC/PKG SPEC N/A	
I.I. NUMBER N/A		WORK INSTRUCTION N/A	
TITLE FEMALE M12, D-CODE, 4 POSITION TO FEMALE RJ45 CATEGORY 5 SHIELDED ADAPTER			
CUSTOMER DRAWING			
ITEM REVISION NAME 13M438AJ/00			
DATASET FILE NAME 13M438AJ_DC02/00A			
UNLESS OTHERWISE SPECIFIED, DIMENSIONAL TOLERANCES ARE: IN [ mm ]  .x ± .1 [ .25 ]      .xxx ± .005 [ .127 ] .xx ± .01 [ .25 ]      ANGLES ± 5 °		MATERIAL:	
 THIRD ANGLE PROJECTION		DRAWING NUMBER: 13M438AJ-02	
DRAWN BY BJN	DATE 1-24-14	CHK DCS	SCALE 1-24-14
SHT 1 OF 2			SIZE A

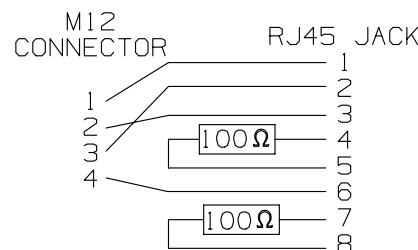
THIS COPY IS PROVIDED ON A RESTRICTED BASIS AND IS NOT TO BE USED IN ANY WAY DETRIMENTAL TO THE INTERESTS OF PANDUIT CORP.



PIN ASSIGNMENTS  
FRONT VIEW



M12 RECOMMENDED  
PANEL CUT-OUT



ADAPTOR SHIELDED  
M12 D CODE TO RJ45

PART NUMBER 1CAM12DRJS		PRODUCT SPEC/PKG SPEC N/A			
I.I. NUMBER N/A		WORK INSTRUCTION N/A			
TITLE FEMALE M12, D-CODE, 4 POSITION TO FEMALE RJ45 CATEGORY 5E SHIELDED ADAPTER CUSTOMER DRAWING					
ITEM REVISION NAME 13M438AJ/00		<b>PANDUIT</b>			
DATASET FILE NAME 13M438AJ_DC02/00A					
UNLESS OTHERWISE SPECIFIED, DIMENSIONAL TOLERANCES ARE: IN [ mm ] .x ± .1 [ 2.54 ] .xxx ± .005 [ .127 ] .xx ± .01 [ .25 ] ANGLES ± 5 °		MATERIAL:			
THIRD ANGLE PROJECTION		DRAWING NUMBER: 13M438AJ-02			
DRAWN BY BJN	DATE 1-24-14	CHK DCS	SCALE FULL	SHT 2 OF 2	SIZE A