



Chipsmall Limited consists of a professional team with an average of over 10 year of expertise in the distribution of electronic components. Based in Hongkong, we have already established firm and mutual-benefit business relationships with customers from,Europe,America and south Asia,supplying obsolete and hard-to-find components to meet their specific needs.

With the principle of "Quality Parts,Customers Priority,Honest Operation,and Considerate Service",our business mainly focus on the distribution of electronic components. Line cards we deal with include Microchip,ALPS,ROHM,Xilinx,Pulse,ON,Everlight and Freescale. Main products comprise IC,Modules,Potentiometer,IC Socket,Relay,Connector.Our parts cover such applications as commercial,industrial, and automotives areas.

We are looking forward to setting up business relationship with you and hope to provide you with the best service and solution. Let us make a better world for our industry!



Contact us

Tel: +86-755-8981 8866 Fax: +86-755-8427 6832

Email & Skype: info@chipsmall.com Web: www.chipsmall.com

Address: A1208, Overseas Decoration Building, #122 Zhenhua RD., Futian, Shenzhen, China





Frequency Timing Generator for Dual Server/Workstation Systems

General Description

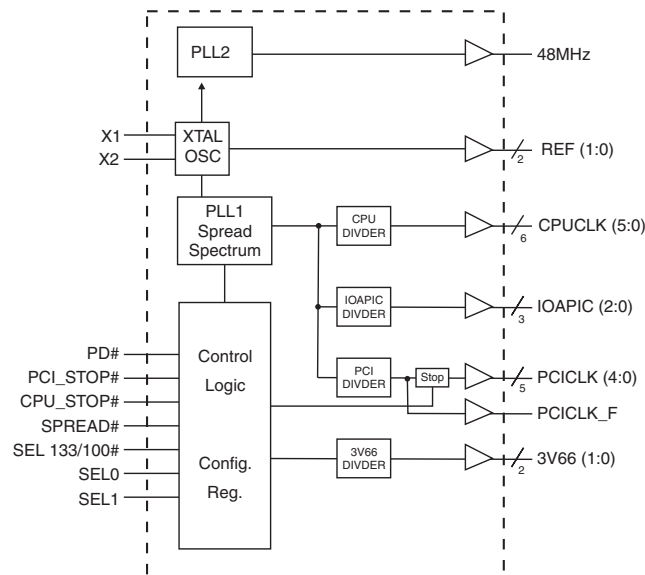
The ICS932S200 is a dual CPU clock generator for serverworks HE-T, HE-SL-T, LE-T chipsets for P III type processors in a Dual-CPU system. Single ended CPU clocks provide faster than 1.5V/ns transition times by parallel connection of 2 CPU pins to each processor.

Spread Spectrum may be enabled by driving the SPREAD# pin active. Spread spectrum typically reduces system EMI by 8dB to 10dB. This simplifies EMI qualification without resorting to board design iterations or costly shielding. The **ICS932S200** employs a proprietary closed loop design, which tightly controls the percentage of spreading over process and temperature variations.

Key Specification:

- CPU Output Jitter: 150ps
- IOAPIC Output Jitter: 250ps
- 3V66, PCI Output Jitter: 250ps
- CPU Output Skew: <175ps
- PCI Output Skew: <500ps
- 3V66 Output Skew <250ps
- IOAPIC Output Skew <250ps
- CPU to 3V66 Output Offset: 0 - 1.5ns (CPU leads)
- CPU to PCI Output Offset: 1.5 - 4.0ns (CPU leads)
- CPU to APIC Output Offset: 1.5 - 4.0ns (CPU leads)

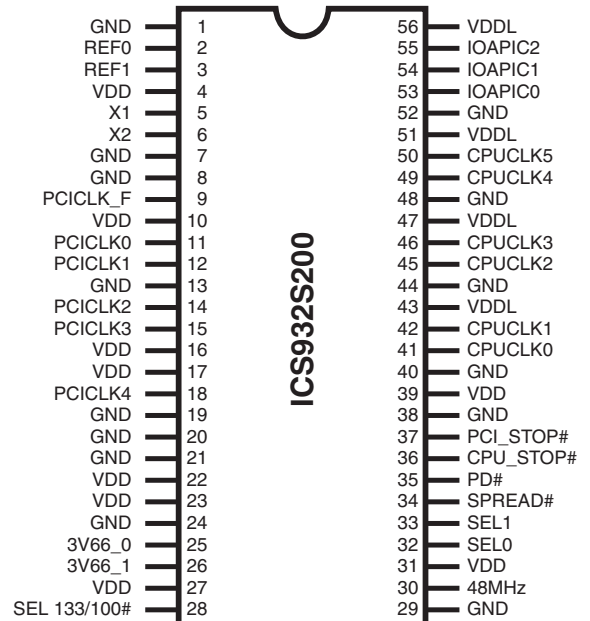
Block Diagram



Features

- Generates the following system clocks:
 - 6 CPU clocks (2.5V, 100/133MHz)
 - 6 PCI clocks, including 1 free running(3.3V, 33MHz)
 - 3 IOAPIC clocks (2.5V, 16.67MHz)
 - 2 Fixed frequency 66MHz clocks(3.3V, 66MHz)
 - 2 REF clocks(3.3V, 14.318MHz)
 - 1 USB clock (3.3V, 48MHz)
- Efficient power management through PD#, CPU_STOP# and PCI_STOP#.
- 0.5% typical down spread modulation on CPU, PCI, IOAPIC and 3V66 output clocks.
- Uses external 14.318MHz crystal.

Pin Configuration



56-pin 300 mil SSOP
56-pin 240 mil TSSOP



Pin Descriptions

| Pin number | Pin name | Type | Description |
|---|--------------|------|--|
| 1, 7, 8, 13, 19 20, 21, 24, 29, 38, 40, 44, 48, 52 | GND | PWR | Gnd pins |
| 3, 2 | REF(1:0) | OUT | 14.318MHz reference clock outputs at 3.3V |
| 4, 10, 16, 17, 22, 23, 27, 31, 39 | VDD | PWR | Power pins 3.3V |
| 5 | X1 | IN | XTAL_IN 14.318MHz crystal input |
| 6 | X2 | OUT | XTAL_OUT Crystal output |
| 9 | PCICLK_F | OUT | Free running PCI clock not affected by PCI_STOP# |
| 18, 15, 14, 12, 11 | PCICLK (4:0) | OUT | PCI clock outputs at 3.3V. Synchronous to CPU clocks. |
| 26, 25 | 3V66 (1:0) | OUT | 66MHz outputs at 3.3V. These outputs are stopped when CPU_STOP# is driven active.. |
| 28 | SEL 133/100# | IN | This selects the frequency for the CPU and CPU/2 outputs. High = 133MHz, Low=100MHz |
| 30 | 48MHz | OUT | Fixed 48MHz clock output. 3.3V |
| 33, 32 | SEL (1:0) | IN | Function select pins. See truth table for details. |
| 34 | SPREAD# | IN | Enables spread spectrum when active(Low). modulates all the CPU, PCI, IOAPIC and 3V66 clocks. Does not affect the REF and 48MHz clocks. 0.5% down spread modulation. |
| 35 | PD# | IN | This asynchronous input powers down the chip when drive active(Low). The internal PLLs are disabled and all the output clocks are held at a Low state. |
| 36 | CPU_STOP# | IN | This asynchronous input halts the CPUCLK and the 3V66 clocks at logic "0" when driven active(Low). |
| 37 | PCI_STOP# | IN | This asynchronous input halts the PCICLK at logic"0" when driven active(Low). PCICLK_F is not affected by this input. |
| 43, 47, 51, 56 | VDDL | PWR | Power pins 2.5V |
| 50, 49, 46, 45, 42, 41 | CPUCLK (5:0) | OUT | Host bus clock output at 2.5V. 133MHz or 100MHz depending on the state of the SEL 133/100MHz. |
| 55, 54, 53 | IOAPIC (2:0) | OUT | IOAPIC clocks at 2.5V. Synchronous with CPUCLKs but fixed at 16.67MHz. |



Frequency Select:

| SEL 133/100# | SEL1 | SEL0 | CPU MHz | 3V66 MHz | PCI MHz | 48 MHz | REF MHz | IOAPIC MHz | Comments |
|--------------|------|------|---------|----------|---------|--------|---------|------------|--------------------|
| 0 | 0 | 0 | Hi-Z | Hi-Z | Hi-Z | Hi-Z | Hi-Z | Hi-Z | Tri-state |
| 0 | 0 | 1 | N/A | N/A | N/A | N/A | N/A | N/A | Reserved |
| 0 | 1 | 0 | 100 | 66.6 | 33.3 | Hi-Z | 14.318 | 16.67 | 48MHz PLL disabled |
| 0 | 1 | 1 | 100 | 66.6 | 33.3 | 48.0 | 14.318 | 16.67 | |
| 1 | 0 | 0 | TCLK/2 | TCLK/4 | TCLK/8 | TCLK/2 | TCLK | TCLK/16 | Test mode (1) |
| 1 | 0 | 1 | N/A | N/A | N/A | N/A | N/A | N/A | Reserved |
| 1 | 1 | 0 | 133 | 66.6 | 33.3 | Hi-Z | 14.318 | 16.67 | |
| 1 | 1 | 1 | 133 | 66.6 | 33.3 | 48.0 | 14.318 | 16.67 | |

Note:

1. TCLK is a test clock driven on the x1 input during test mode.

ICS932S200 Power Management Features:

| CPU_STOP# | PD# | PCI_STOP# | CPUCLK | IOAPIC | 3V66 | PCI | PCI_F | REF. 48MHz | Osc | VCOs |
|-----------|-----|-----------|--------|--------|------|-----|-------|------------|-----|------|
| X | 0 | X | LOW | LOW | LOW | LOW | LOW | LOW | OFF | OFF |
| 0 | 1 | 0 | LOW | ON | LOW | LOW | ON | ON | ON | ON |
| 0 | 1 | 1 | LOW | ON | LOW | ON | ON | ON | ON | ON |
| 1 | 1 | 0 | ON | ON | ON | LOW | ON | ON | ON | ON |
| 1 | 1 | 1 | ON | ON | ON | ON | ON | ON | ON | ON |

Note:

1. LOW means outputs held static LOW as per latency requirement next page.
2. On means active.
3. PD# pulled Low, impacts all outputs including REF and 48 MHz outputs.
4. All 3V66 as well as all CPU clocks should stop cleanly when CPU_STOP# is pulled LOW.
5. IOAPIC, REF, 48 MHz signals are not controlled by the CPU_STOP# functionality and are enabled all in all conditions except PD# = LOW



Power Management Requirements:

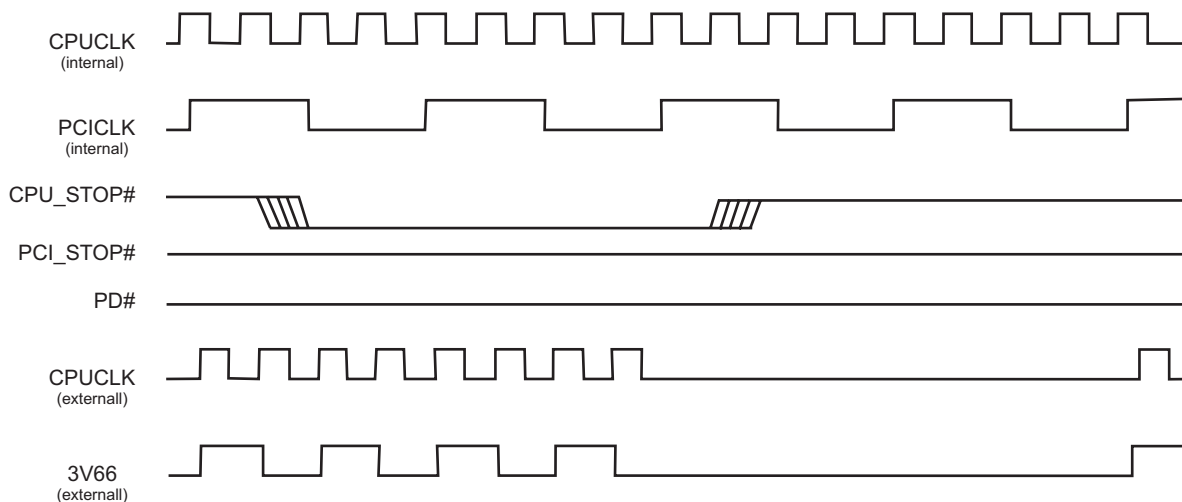
| Signal | Signal State | Latency |
|-----------|----------------------|-------------------------------|
| | | No. of rising edges of PCICLK |
| CPU_STOP | 0 (disabled) | 1 |
| | 1 (enabled) | 1 |
| PCI_STOP# | 0 (disabled) | 1 |
| | 1 (enabled) | 1 |
| PD# | 1 (normal operation) | 3mS |
| | 0 (power down) | 2max. |

Note:

1. Clock on/off latency is defined in the number of rising edges of free running PCICLKs between the clock disable goes low/high to the first valid clock comes out of the device.
2. Power up latency is when PWR_DWN# goes inactive (high to when the first valid clocks are driven from the device).

CPU_STOP# Timing Diagram

CPU_STOP# is an asynchronous input to the clock synthesizer. It is used to turn off the CPU and 3V66 clocks for low power operation. CPU_STOP# is asserted asynchronously by the external clock control logic with the rising edge of free running PCI clock (and hence CPU clock) and must be internally synchronized to the external output. All other clocks will continue to run while the CPU clocks are disabled. The CPU clocks must always be stopped in a low state and started in such a manner as to guarantee that the high pulse width is a full pulse.



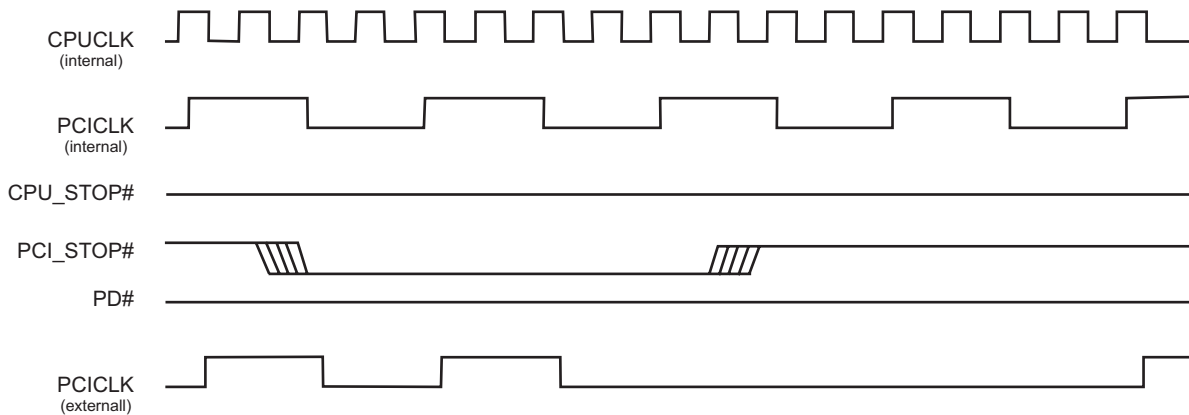
Notes:

1. All timing is referenced to the internal CPUCLK.
2. The internal label means inside the chip and is a reference only. This in fact may not be the way that the control is designed.
3. 3V66 clocks also stop/start before
4. PD# and PCI_STOP# are shown in a high state.
5. Diagrams shown with respect to 133MHz. Similar operation when CPU is 100MHz



PCI_STOP# Timing Diagram

PCI_STOP# is an input to the clock synthesizer and must be made synchronous to the clock driver PCICLK_F output. It is used to turn off the PCI clocks for low power operation. PCI clocks are required to be stopped in a low state and started such that a full high pulse width is guaranteed. **ONLY one rising edge of PCICLK_F is allowed** after the clock control logic switched for the PCI outputs to become enabled/disabled.



Notes:

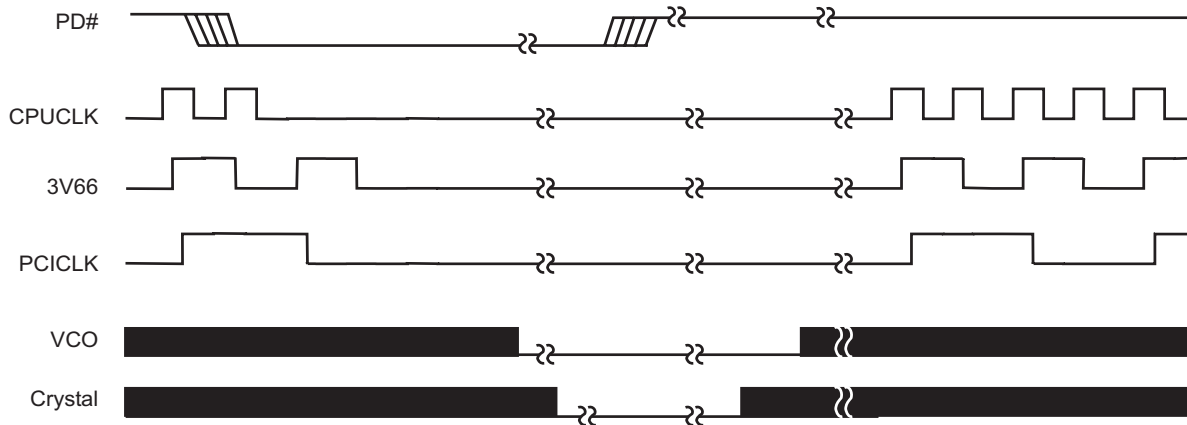
1. All timing is referenced to CPUCLK.
2. Internal means inside the chip.
3. All other clocks continue to run undisturbed.
4. PD# and CPU_STOP# are shown in a high state.
5. Diagrams shown with respect to 133MHz. Similar operation when CPU is 100MHz.



PD# Timing Diagram

The power down selection is used to put the part into a very low power state without turning off the power to the part. PD# is an asynchronous active low input. This signal needs to be synchronized internal to the device prior to powering down the clock synthesizer.

Internal clocks are not running after the device is put in power down. When PD# is active low all clocks need to be driven to a low value and held prior to turning off the VCOs and crystal. The power up latency needs to be less than 3 mS. The power down latency should be as short as possible but conforming to the sequence requirements shown below. PCI_STOP# and CPU_STOP# are considered to be don't cares during the power down operations. The REF and 48MHz clocks are expected to be stopped in the LOW state as soon as possible. Due to the state of the internal logic, stopping and holding the REF clock outputs in the LOW state may require more than one clock cycle to complete.



Notes:

1. All timing is referenced to the Internal CPUCLK (defined as inside the ICS932S200 device).
2. As shown, the outputs Stop Low on the next falling edge after PD# goes low.
3. PD# is an asynchronous input and metastable conditions may exist. This signal is synchronized inside this part.
4. The shaded sections on the VCO and the Crystal signals indicate an active clock.
5. Diagrams shown with respect to 133MHz. Similar operation when CPU is 100MHz.



Absolute Maximum Ratings

| | |
|-------------------------------|--------------------------------|
| Supply Voltage | 7.0 V |
| Logic Inputs | GND –0.5 V to $V_{DD} + 0.5$ V |
| Ambient Operating Temperature | 0°C to +70°C |
| Storage Temperature | –65°C to +150°C |

Stresses above those listed under *Absolute Maximum Ratings* may cause permanent damage to the device. These ratings are stress specifications only and functional operation of the device at these or any other conditions above those listed in the operational sections of the specifications is not implied. Exposure to absolute maximum rating conditions for extended periods may affect product reliability.

Electrical Characteristics - Input/Supply/Common Output Parameters

$T_A = 0 - 70^\circ\text{C}$; Supply Voltage $V_{DD} = 3.3\text{ V} \pm 5\%$, $V_{DDL} = 2.5\text{ V} \pm 5\%$ (unless otherwise stated)

| PARAMETER | SYMBOL | CONDITIONS | MIN | TYP | MAX | UNITS |
|--------------------------------|------------------|--|----------------|-------|----------------|---------------|
| Input High Voltage | V_{IH} | | 2 | | $V_{DD} + 0.3$ | V |
| Input Low Voltage | V_{IL} | | $V_{SS} - 0.3$ | | 0.8 | V |
| Input High Current | I_{IH} | $V_{IN} = V_{DD}$ | | 0.1 | 5 | μA |
| Input Low Current | I_{IL1} | $V_{IN} = 0\text{ V}$; Inputs with no pull-up resistors | -5 | 2.0 | | μA |
| Input Low Current | I_{IL2} | $V_{IN} = 0\text{ V}$; Inputs with pull-up resistors | -200 | -100 | | μA |
| Operating Supply Current | $I_{DD3.3OP100}$ | Select @ 100MHz; Max discrete cap loads | | 70 | 160 | mA |
| | $I_{DD3.3OP133}$ | Select @ 133MHz; Max discrete cap loads | | 80 | | |
| Power Down Supply Current | $I_{DD3.3PD}$ | $C_L = 30\text{ pF}$; PWRDWN# = 0 | | 102 | 200 | μA |
| Input frequency | F_i | $V_{DD} = 3.3\text{ V}$ | 12 | 14.32 | 16 | MHz |
| Input Capacitance ¹ | C_{IN} | Logic Inputs | | | 5 | pF |
| | C_{INX} | X1 & X2 pins | 27 | 36 | 45 | pF |
| Transition Time ¹ | T_{Trans} | To 1st crossing of target Freq. | | | 3 | ms |
| Settling Time ¹ | T_S | From 1st crossing to 1% target Freq. | | 1 | | ms |
| Clk Stabilization ¹ | T_{Stab} | From $V_{DD} = 3.3\text{ V}$ to 1% target Freq. | | | 3 | ms |

¹Guaranteed by design, not 100% tested in production.

Electrical Characteristics - Input/Supply/Common Output Parameters

$T_A = 0 - 70^\circ\text{C}$; Supply Voltage $V_{DD} = 3.3\text{ V} \pm 5\%$, $V_{DDL} = 2.5\text{ V} \pm 5\%$ (unless otherwise stated)

| PARAMETER | SYMBOL | CONDITIONS | MIN | TYP | MAX | UNITS |
|--------------------------|------------------|---|-----|-----|-----|-------|
| Operating Supply Current | $I_{DD2.5OP100}$ | Select @ 100MHz; Max discrete cap loads | | 38 | 75 | mA |
| | $I_{DD2.5OP133}$ | Select @ 133MHz; Max discrete cap loads | | 69 | 90 | |

¹Guaranteed by design, not 100% tested in production.



Electrical Characteristics - CPUCLK

$T_A = 0 - 70^\circ\text{C}$; $V_{DD} = 3.3\text{ V} \pm 5\%$, $V_{DDL} = 2.5\text{ V} \pm 5\%$; $C_L = 20\text{ pF}$ (unless otherwise stated)

| PARAMETER | SYMBOL | CONDITIONS | MIN | TYP | MAX | UNITS |
|------------------------|-------------------|---|-----|------|-----|-------|
| Output High Voltage | V_{OH2B} | $I_{OH} = -12.0\text{ mA}$ | 2 | 2.2 | | V |
| Output Low Voltage | V_{OL2B} | $I_{OL} = 12\text{ mA}$ | | 0.3 | 0.4 | V |
| Output High Current | I_{OH2B} | $V_{OH} = 1.7\text{ V}$ | | -35 | -19 | mA |
| Output Low Current | I_{OL2B} | $V_{OL} = 0.7\text{ V}$ | 19 | 27 | | mA |
| Rise Time | t_{r2B}^1 | $V_{OL} = 0.4\text{ V}$, $V_{OH} = 2.0\text{ V}$ | 0.4 | 0.84 | 1.6 | ns |
| Fall Time | t_{f2B}^1 | $V_{OH} = 2.0\text{ V}$, $V_{OL} = 0.4\text{ V}$ | 0.4 | 0.81 | 1.6 | ns |
| Duty Cycle | d_{t2B}^1 | $V_T = 1.25\text{ V}$ | 45 | 50.7 | 55 | % |
| Skew | t_{sk2B}^1 | $V_T = 1.25\text{ V}$ | | 93 | 175 | ps |
| Jitter, Cycle-to-cycle | $t_{jvc-cyc2B}^1$ | $V_T = 1.25\text{ V}$ | | 108 | 150 | ps |

¹Guaranteed by design, not 100% tested in production.

Electrical Characteristics - 3V66

$T_A = 0 - 70^\circ\text{C}$; $V_{DD} = 3.3\text{ V} \pm 5\%$, $V_{DDL} = 2.5\text{ V} \pm 5\%$; $C_L = 30\text{ pF}$

| PARAMETER | SYMBOL | CONDITIONS | MIN | TYP | MAX | UNITS |
|-------------------------------------|----------------|---|-----|------|-----|-------|
| Output High Voltage | V_{OH1} | $I_{OH} = -11\text{ mA}$ | 2.4 | 3.1 | | V |
| Output Low Voltage | V_{OL1} | $I_{OL} = 9.4\text{ mA}$ | | 0.25 | 0.4 | V |
| Output High Current | I_{OH1} | $V_{OH} = 2.0\text{ V}$ | | -60 | -22 | mA |
| Output Low Current | I_{OL1} | $V_{OL} = 0.8\text{ V}$ | 25 | 44 | | mA |
| Rise Time ¹ | t_{r1} | $V_{OL} = 0.4\text{ V}$, $V_{OH} = 2.4\text{ V}$ | 0.5 | 1.44 | 2 | ns |
| Fall Time ¹ | t_{f1} | $V_{OH} = 2.4\text{ V}$, $V_{OL} = 0.4\text{ V}$ | 0.5 | 1.24 | 2 | ns |
| Duty Cycle ¹ | d_{t1} | $V_T = 1.5\text{ V}$ | 45 | 48.2 | 55 | % |
| Skew ¹ | t_{sk1} | $V_T = 1.5\text{ V}$ | | 83 | 250 | ps |
| Jitter, Cycle-to-cycle ¹ | $t_{jvc-cyc1}$ | $V_T = 1.5\text{ V}$ | | 110 | 250 | ps |

¹Guaranteed by design, not 100% tested in production.



Electrical Characteristics - PCICLK

$T_A = 0 - 70^\circ \text{C}$; $V_{DD} = 3.3 \text{ V} \pm 5\%$, $V_{DDL} = 2.5 \text{ V} \pm 5\%$; $C_L = 60 \text{ pF}$ for PCI0 & PCI1, $C_L = 30 \text{ pF}$ for other PCIs

| PARAMETER | SYMBOL | CONDITIONS | MIN | TYP | MAX | UNITS |
|-------------------------------------|------------------------|---|------|------|-----|-------|
| Output High Voltage | V_{OH1} | $I_{OH} = -11 \text{ mA}$ | 2.4 | 3.1 | | V |
| Output Low Voltage | V_{OL1} | $I_{OL} = 9.4 \text{ mA}$ | | 0.2 | 0.4 | V |
| Output High Current | I_{OH1} | $V_{OH} = 2.0 \text{ V}$ | | -60 | -22 | mA |
| Output Low Current | I_{OL1} | $V_{OL} = 0.8 \text{ V}$ | 25 | 45 | | mA |
| Rise Time ¹ | t_{r1} | $V_{OL} = 0.4 \text{ V}$, $V_{OH} = 2.4 \text{ V}$ | 0.5 | 1.2 | 2 | ns |
| Fall Time ¹ | t_{f1} | $V_{OH} = 2.4 \text{ V}$, $V_{OL} = 0.4 \text{ V}$ | 0.5 | 1.1 | 2 | ns |
| Duty Cycle ¹ | d_{t1} | $V_T = 1.5 \text{ V}$ | 45 | 50.8 | 55 | % |
| Skew ¹ | t_{sk1} | $V_T = 1.5 \text{ V}$ | | 79 | 500 | ps |
| Jitter, One Sigma ¹ | $t_{j1\sigma1}$ | $V_T = 1.5 \text{ V}$ | | | 150 | ps |
| Jitter, Absolute ¹ | t_{jabs1} | $V_T = 1.5 \text{ V}$ | -250 | | 250 | ps |
| Jitter, Cycle-to-cycle ¹ | $t_{j\text{cyc-cyc}1}$ | $V_T = 1.5 \text{ V}$ | | 129 | 250 | ps |

¹Guaranteed by design, not 100% tested in production.

Electrical Characteristics - IOAPIC

$T_A = 0 - 70^\circ \text{C}$; $V_{DD} = 3.3 \text{ V} \pm 5\%$, $V_{DDL} = 2.5 \text{ V} \pm 5\%$; $C_L = 20 \text{ pF}$ (unless otherwise stated)

| PARAMETER | SYMBOL | CONDITIONS | MIN | TYP | MAX | UNITS |
|-------------------------------------|-------------------------|---|-----|------|-----|-------|
| Output High Voltage | V_{OH4B} | $I_{OH} = -12 \text{ mA}$ | 2 | 2.23 | | V |
| Output Low Voltage | V_{OL4B} | $I_{OL} = 12 \text{ mA}$ | | 0.3 | 0.4 | V |
| Output High Current | I_{OH4B} | $V_{OH} = 1.7 \text{ V}$ | | -36 | -16 | mA |
| Output Low Current | I_{OL4B} | $V_{OL} = 0.7 \text{ V}$ | 19 | 26 | | mA |
| Rise Time ¹ | T_{r4B} | $V_{OL} = 0.4 \text{ V}$, $V_{OH} = 2.0 \text{ V}$ | 0.4 | 1.35 | 1.6 | ns |
| Fall Time ¹ | T_{f4B} | $V_{OH} = 2.0 \text{ V}$, $V_{OL} = 0.4 \text{ V}$ | 0.4 | 1.01 | 1.6 | ns |
| Duty Cycle ¹ | D_{t4B} | $V_T = 1.25 \text{ V}$ | 45 | 50.3 | 55 | % |
| Skew | t_{sk4B}^1 | $V_T = 1.25 \text{ V}$ | | 63 | 250 | ps |
| Jitter, Cycle-to-cycle ¹ | $t_{j\text{cyc-cyc}4B}$ | $V_T = 1.25 \text{ V}$ | | 80 | 250 | ps |

¹Guaranteed by design, not 100% tested in production.



Electrical Characteristics - 48MHz, REF

$T_A = 0 - 70^\circ\text{C}$; $V_{DD} = 3.3\text{ V} \pm 5\%$, $V_{DDL} = 2.5\text{ V} \pm 5\%$; $C_L = 20\text{ pF}$ (unless otherwise stated)

| PARAMETER | SYMBOL | CONDITIONS | MIN | TYP | MAX | UNITS |
|-------------------------------------|----------------|---|-----|------|------|-------|
| Output High Voltage | V_{OH5} | $I_{OH} = -12\text{ mA}$ | 2.6 | 2.9 | | V |
| Output Low Voltage | V_{OL5} | $I_{OL} = 9\text{ mA}$ | | 0.3 | 0.4 | V |
| Output High Current | I_{OH5} | $V_{OH} = 2.0\text{ V}$ | | -35 | -22 | mA |
| Output Low Current | I_{OL5} | $V_{OL} = 0.8\text{ V}$ | 17 | 23 | | mA |
| Rise Time ¹ | t_{r5} | $V_{OL} = 0.4\text{ V}$, $V_{OH} = 2.4\text{ V}$, 48MHz | | 1.9 | 4 | ns |
| Fall Time ¹ | t_{f5} | $V_{OH} = 2.4\text{ V}$, $V_{OL} = 0.4\text{ V}$, 48MHz | | 2 | 4 | ns |
| Duty Cycle ¹ | d_{t5} | $V_T = 1.5\text{ V}$, 48MHz | 45 | 50.2 | 55 | % |
| Rise Time ¹ | t_{r5} | $V_{OL} = 0.4\text{ V}$, $V_{OH} = 2.4\text{ V}$, REF | | 0.7 | N/A | ns |
| Fall Time ¹ | t_{f5} | $V_{OH} = 2.4\text{ V}$, $V_{OL} = 0.4\text{ V}$, REF | | 0.5 | N/A | ns |
| Duty Cycle ¹ | d_{t5} | $V_T = 1.5\text{ V}$, REF | 45 | 52 | N/A | % |
| Jitter, Cycle-to-cycle ¹ | $t_{jvc-cyc5}$ | $V_T = 1.5\text{ V}$, 48MHz | | 239 | 500 | ps |
| Jitter, Cycle-to-cycle ¹ | $t_{jvc-cyc5}$ | $V_T = 1.5\text{ V}$, REF | | 413 | 1000 | ps |

¹Guaranteed by design, not 100% tested in production.



| SYMBOL | In Millimeters COMMON DIMENSIONS | | In Inches COMMON DIMENSIONS | |
|----------|-------------------------------------|--------|--------------------------------|-------|
| | MIN | MAX | MIN | MAX |
| A | 2.413 | 2.794 | .095 | .110 |
| A1 | 0.203 | 0.406 | .008 | .016 |
| b | 0.203 | 0.343 | .008 | .0135 |
| c | 0.127 | 0.254 | .005 | .010 |
| D | SEE VARIATIONS | | SEE VARIATIONS | |
| E | 10.033 | 10.668 | .395 | .420 |
| E1 | 7.391 | 7.595 | .291 | .299 |
| e | 0.635 BASIC | | 0.025 BASIC | |
| h | 0.381 | 0.635 | .015 | .025 |
| L | 0.508 | 1.016 | .020 | .040 |
| N | SEE VARIATIONS | | SEE VARIATIONS | |
| α | 0° | 8° | 0° | 8° |

VARIATIONS

| N | D mm. | | D (inch) | |
|----|--------|--------|----------|------|
| | MIN | MAX | MIN | MAX |
| 56 | 18.288 | 18.542 | .720 | .730 |

JEDEC MO-118
DOC# 10-0034
6/100
REV B

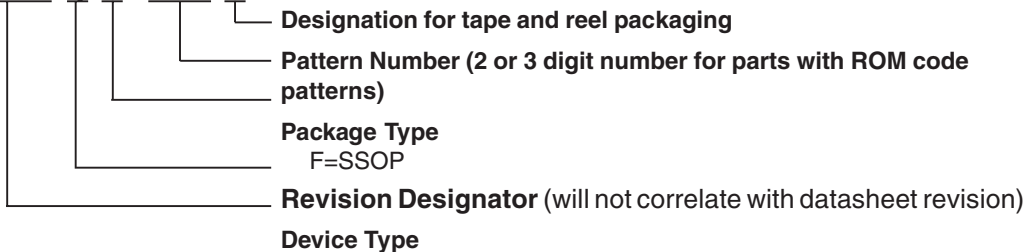
300 mil SSOP

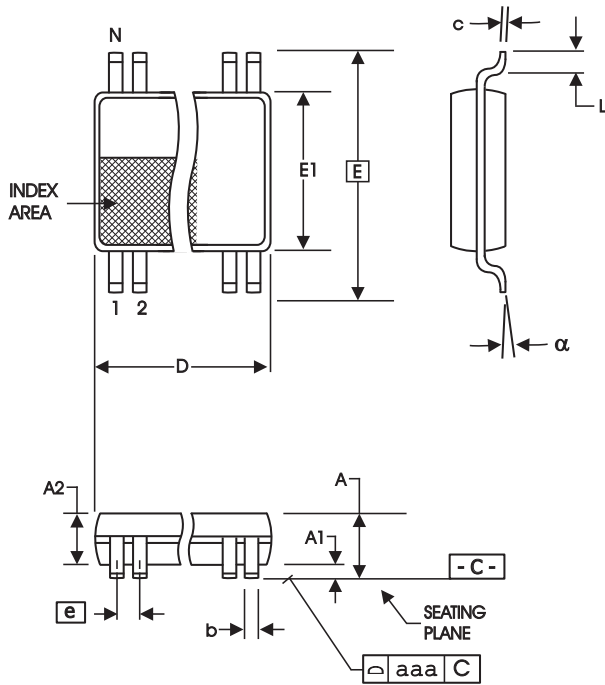
Ordering Information

932S200yFT

Example:

XXXX y F - PPP T





6.10 mm. Body, 0.50 mm. pitch TSSOP
(240 mil) (0.020 mil)

| SYMBOL | In Millimeters | | In Inches | |
|----------|-------------------|------|-------------------|------|
| | COMMON DIMENSIONS | | COMMON DIMENSIONS | |
| | MIN | MAX | MIN | MAX |
| A | -- | 1.20 | -- | .047 |
| A1 | 0.05 | 0.15 | .002 | .006 |
| A2 | 0.80 | 1.05 | .032 | .041 |
| b | 0.17 | 0.27 | .007 | .011 |
| c | 0.09 | 0.20 | .0035 | .008 |
| D | SEE VARIATIONS | | SEE VARIATIONS | |
| E | 8.10 BASIC | | 0.319 BASIC | |
| E1 | 6.00 | 6.20 | .236 | .244 |
| e | 0.50 BASIC | | 0.020 BASIC | |
| L | 0.45 | 0.75 | .018 | .030 |
| N | SEE VARIATIONS | | SEE VARIATIONS | |
| α | 0° | 8° | 0° | 8° |
| aaa | -- | 0.10 | -- | .004 |

VARIATIONS

| N | D mm. | | D (inch) | |
|----|-------|-------|----------|------|
| | MIN | MAX | MIN | MAX |
| 56 | 13.90 | 14.10 | .547 | .555 |

Reference Doc.: JEDEC Publication 95, MO-153
 10-0039

Ordering Information

932S200yGT

Example:

XXXX y G - PPP T

- Designation for tape and reel packaging
- Pattern Number (2 or 3 digit number for parts with ROM code patterns)
- Package Type
G=TSSOP
- Revision Designator (will not correlate with datasheet revision)
- Device Type



Revision History

| Rev. | Issue Date | Description | Page # |
|-------------|-------------------|--|---------------|
| D | 12/15/2008 | Removed ICS prefix from ordering information | 11-12 |
| | | | |
| | | | |
| | | | |