



Chipsmall Limited consists of a professional team with an average of over 10 year of expertise in the distribution of electronic components. Based in Hongkong, we have already established firm and mutual-benefit business relationships with customers from,Europe,America and south Asia,supplying obsolete and hard-to-find components to meet their specific needs.

With the principle of "Quality Parts,Customers Priority,Honest Operation,and Considerate Service",our business mainly focus on the distribution of electronic components. Line cards we deal with include Microchip,ALPS,ROHM,Xilinx,Pulse,ON,Everlight and Freescale. Main products comprise IC,Modules,Potentiometer,IC Socket,Relay,Connector.Our parts cover such applications as commercial,industrial, and automotives areas.

We are looking forward to setting up business relationship with you and hope to provide you with the best service and solution. Let us make a better world for our industry!



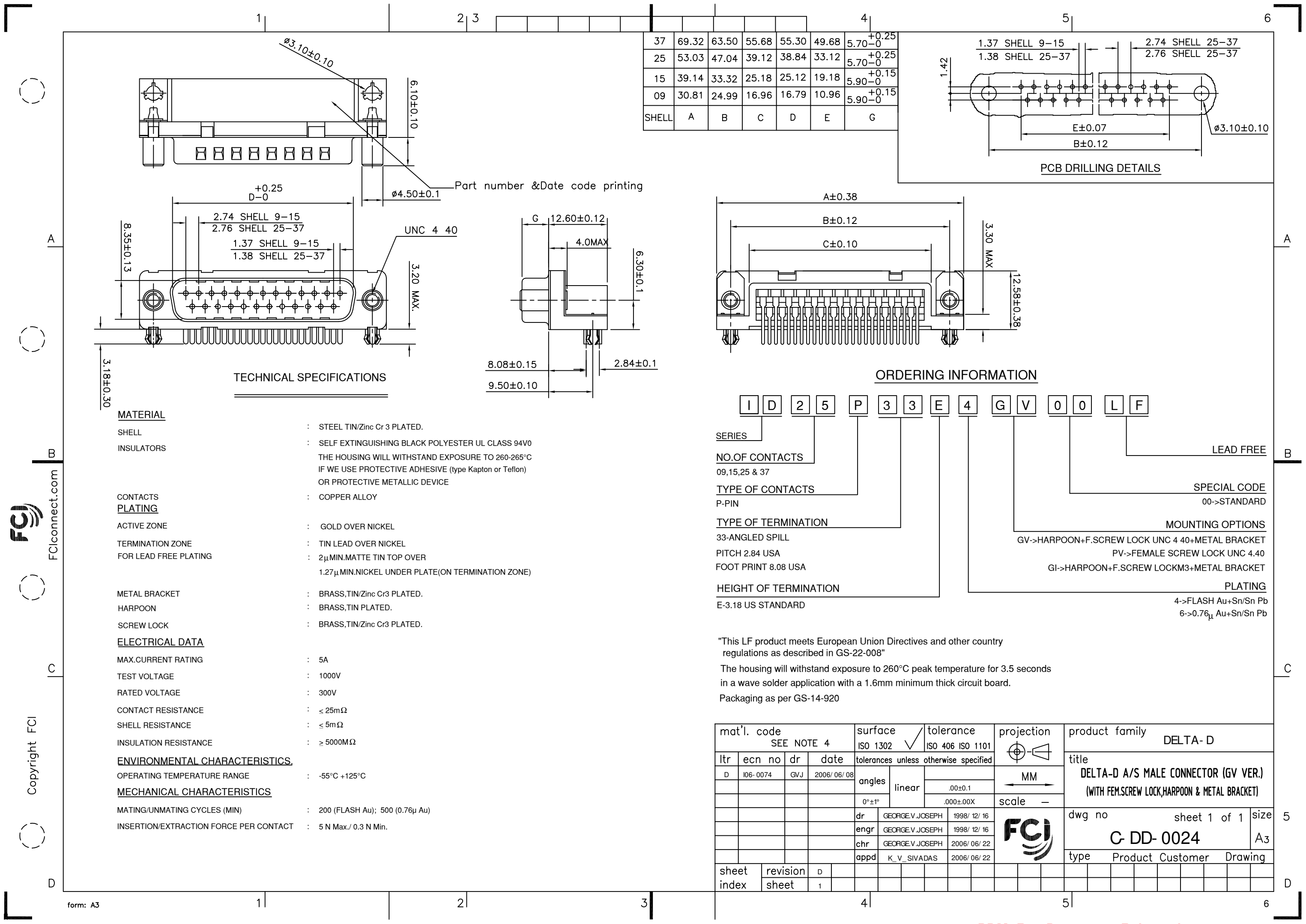
## Contact us

Tel: +86-755-8981 8866 Fax: +86-755-8427 6832

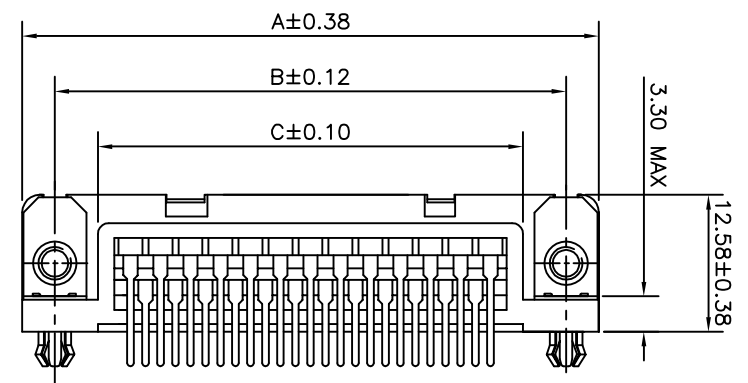
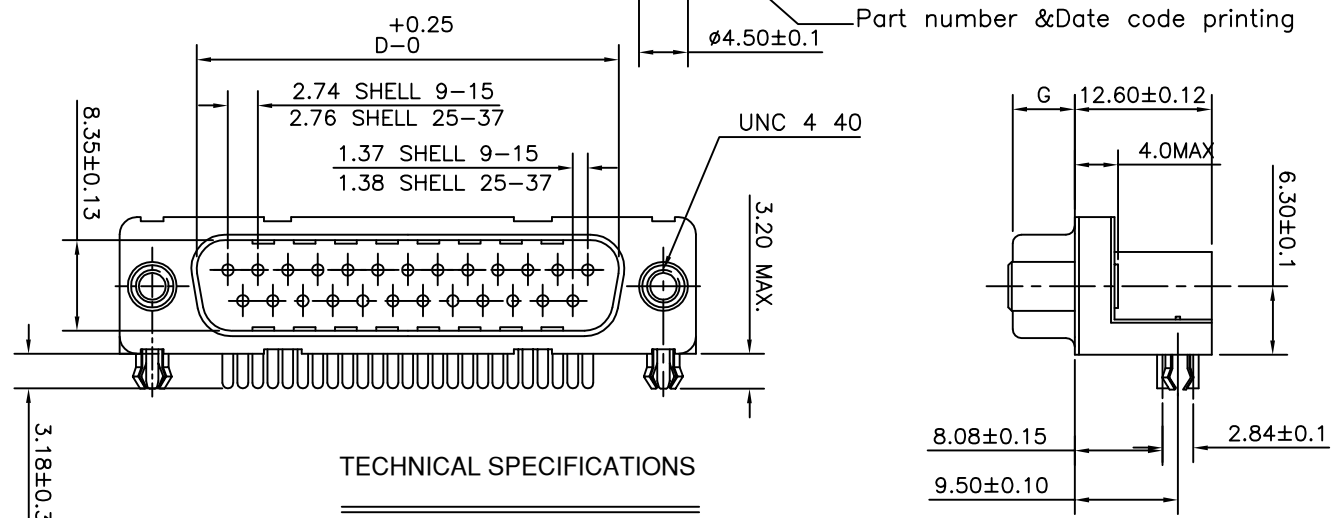
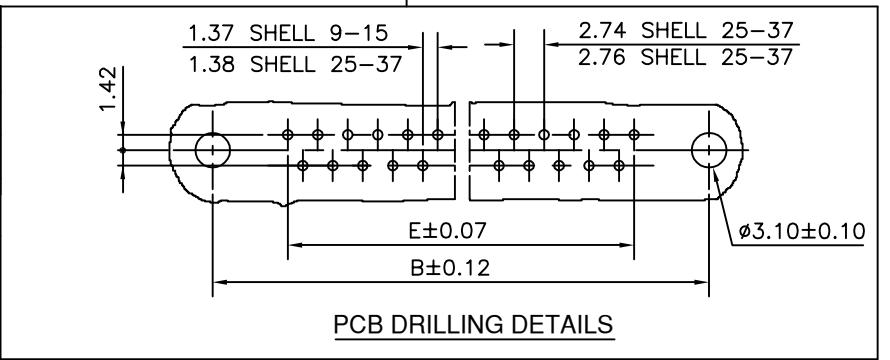
Email & Skype: info@chipsmall.com Web: www.chipsmall.com

Address: A1208, Overseas Decoration Building, #122 Zhenhua RD., Futian, Shenzhen, China





37	69.32	63.50	55.68	55.30	49.68	5.70 <sup>+0.25</sup> <sub>-0</sub>
25	53.03	47.04	39.12	38.84	33.12	5.70 <sup>+0.25</sup> <sub>-0</sub>
15	39.14	33.32	25.18	25.12	19.18	5.90 <sup>+0.15</sup> <sub>-0</sub>
09	30.81	24.99	16.96	16.79	10.96	5.90 <sup>+0.15</sup> <sub>-0</sub>
SHELL	A	B	C	D	E	G



**MATERIAL**

SHELL : STEEL TIN/Zinc Cr 3 PLATED.

INSULATORS : SELF EXTINGUISHING BLACK POLYESTER UL CLASS 94V0

CONTACTS : THE HOUSING WILL WITHSTAND EXPOSURE TO 260-265°C IF WE USE PROTECTIVE ADHESIVE (type Kapton or Teflon) OR PROTECTIVE METALLIC DEVICE

PLATING : COPPER ALLOY

ACTIVE ZONE : GOLD OVER NICKEL

TERMINATION ZONE : TIN LEAD OVER NICKEL

FOR LEAD FREE PLATING : 2µ MIN.MATTE TIN TOP OVER  
1.27µ MIN.NICKEL UNDER PLATE(ON TERMINATION ZONE)

METAL BRACKET : BRASS,TIN/Zinc Cr3 PLATED.

HARPOON : BRASS,TIN PLATED.

SCREW LOCK : BRASS,TIN/Zinc Cr3 PLATED.

**ELECTRICAL DATA**

MAX.CURRENT RATING : 5A

TEST VOLTAGE : 1000V

RATED VOLTAGE : 300V

CONTACT RESISTANCE : ≤ 25mΩ

SHELL RESISTANCE : ≤ 5mΩ

INSULATION RESISTANCE : ≥ 5000MΩ

**ENVIRONMENTAL CHARACTERISTICS**

OPERATING TEMPERATURE RANGE : -55°C +125°C

**MECHANICAL CHARACTERISTICS**

MATING/UNMATING CYCLES (MIN) : 200 (FLASH Au); 500 (0.76µ Au)

INSERTION/EXTRACTION FORCE PER CONTACT : 5 N Max./ 0.3 N Min.

**ORDERING INFORMATION**

Series: I D 2 5 P 3 3 E 4 G V 0 0 L F

NO.OF CONTACTS: 09,15,25 & 37

TYPE OF CONTACTS: P-PIN

TYPE OF TERMINATION: 33-ANGLED SPILL

PITCH: 2.84 USA

FOOT PRINT: 8.08 USA

HEIGHT OF TERMINATION: E-3.18 US STANDARD

LEAD FREE

SPECIAL CODE: 00->STANDARD

MOUNTING OPTIONS: GV->HARPOON+F.SCREW LOCK UNC 4 40+METAL BRACKET  
PV->FEMALE SCREW LOCK UNC 4.40  
GI->HARPOON+F.SCREW LOCKM3+METAL BRACKET

PLATING: 4->FLASH Au+Sn/Sn Pb  
6->0.76µ Au+Sn/Sn Pb

"This LF product meets European Union Directives and other country regulations as described in GS-22-008"

The housing will withstand exposure to 260°C peak temperature for 3.5 seconds in a wave solder application with a 1.6mm minimum thick circuit board.

Packaging as per GS-14-920

mat'l. code		surface		tolerance		projection		product family	
SEE NOTE 4		ISO 1302		ISO 406 ISO 1101		MM		DELTA-D	
ltr	ecn no	dr	date	tolerances unless otherwise specified		MM		title	
D	106-0074	GVJ	2006/06/08	angles	linear	MM		DELTA-D A/S MALE CONNECTOR (GV VER.)	
				0°±1°	.00±0.1	scale		(WITH FEM.SCREW LOCK,HARPOON & METAL BRACKET)	
				dr	GEORGE.V.JOSEPH	1998/12/16	dwg no		sheet 1 of 1
				enr	GEORGE.V.JOSEPH	1998/12/16	C-DD-0024		size A3
				chr	GEORGE.V.JOSEPH	2006/06/22	type		Product Customer Drawing
				appd	K.V.SIVADAS	2006/06/22			
sheet index	revision sheet	D	1						

Copyright FCI