



Chipsmall Limited consists of a professional team with an average of over 10 year of expertise in the distribution of electronic components. Based in Hongkong, we have already established firm and mutual-benefit business relationships with customers from,Europe,America and south Asia,supplying obsolete and hard-to-find components to meet their specific needs.

With the principle of “Quality Parts,Customers Priority,Honest Operation,and Considerate Service”,our business mainly focus on the distribution of electronic components. Line cards we deal with include Microchip,ALPS,ROHM,Xilinx,Pulse,ON,Everlight and Freescale. Main products comprise IC,Modules,Potentiometer,IC Socket,Relay,Connector.Our parts cover such applications as commercial,industrial, and automotives areas.

We are looking forward to setting up business relationship with you and hope to provide you with the best service and solution. Let us make a better world for our industry!



Contact us

Tel: +86-755-8981 8866 Fax: +86-755-8427 6832

Email & Skype: info@chipsmall.com Web: www.chipsmall.com

Address: A1208, Overseas Decoration Building, #122 Zhenhua RD., Futian, Shenzhen, China



Proximity Sensors Inductive Extended Range, Aluminium Micro Switch Housing Type IG12FSF04DO, DC, 2-wire



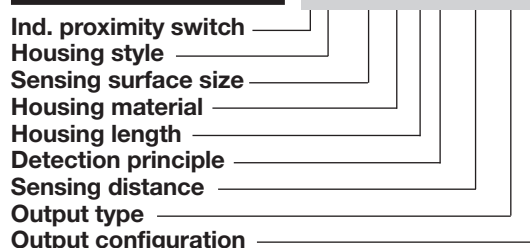
- Sensing distance: 4 mm
- Flush type
- Power supply: 10 to 40 VDC
- Output: Transistor
- Make or Break switching
- Protection: Reverse polarity, short-circuit and transients
- 2 m cable - PUR/PVC
- Dimensions: Body: 30 x 19 x 15 mm
 Tip: Ø12 x 16 mm

Product Description

Flush mountable inductive proximity switch in micro switch aluminium housing with 2 m PUR cable. This type of sensor can replace mechanical limit switches.

The sensor has an extreme low No-load supply current of typical 0.3 mA. Mounting with 4 mm captive screws or 3 mm screws (front mounted).

Ordering Key **IG12FSF04DO**



Type Selection

Housing dimensions	Connection	Rated operating dist. (S _n)	Ordering no. 2 wire DC, Normally open	Ordering no. 2 wire DC, Normally closed
30 x 19 x 15 mm	Cable	4 mm ¹⁾	IG 12 FSF 04 DO	IG 12 FSF 04 DC

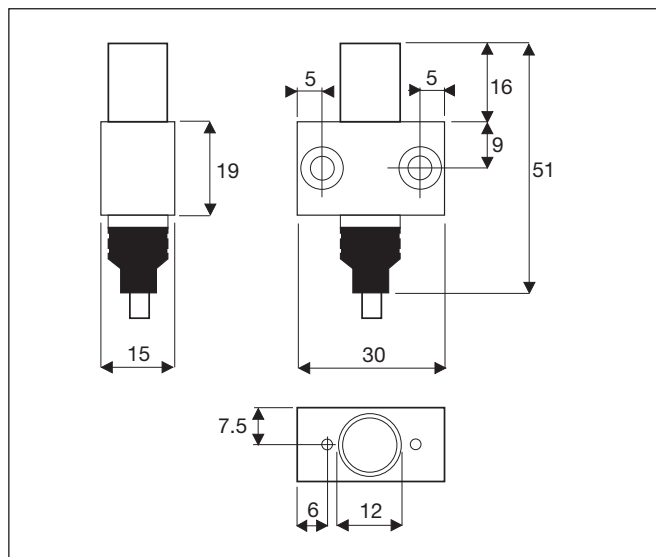
¹⁾ For flush mounting in metal

Specifications

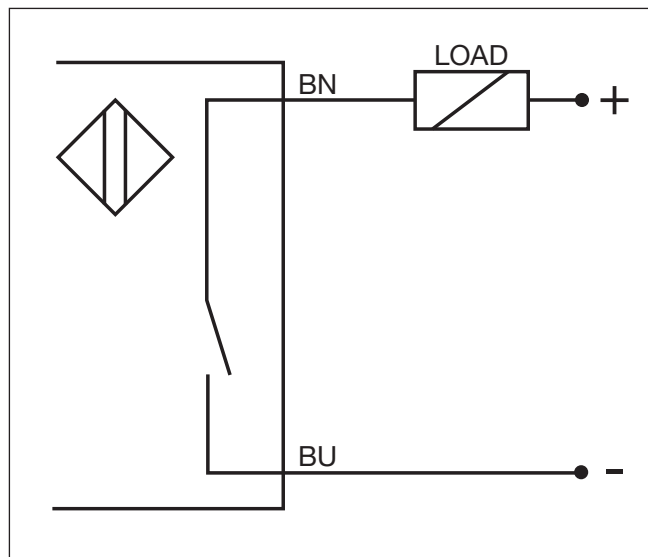
Rated operational volt. (U _e) (U _B)	12 to 36 VDC 10 to 40 VDC (ripple included)	Degree of protection	IP 67 (Nema 1, 3, 4, 6, 13)
Ripple	≤ 10%	Housing material	Body Front
Rated operational current (I _e) Continuous	≤ 5-100 mA		Anodized Aluminium, type EN AW-6802 Anodized Aluminium and grey thermoplastic polyester (CPBT)
No-load supply current (I)	≤ 0.4 mA	Connection	Cable
Voltage drop (U _d)	≤ 3 VDC at max. load		2 m, 2 x 0.34 mm ² , Ø5.1 mm grey PUR/PVC, oil proof
Protection	Reverse polarity, short-circuit, transients	Mounting	
Transient voltage	≤ 1 kV/500 Ω		2 x M4 screws for side mounting or 2 x M3 screws for front mounting
Power ON delay	< 100 ms	Weight (cable included 2 m)	Approx. 85 g
Frequency of op. cycles (f)	1 kHz		
Repeat accuracy (R)	≤ 10%		
Hysteresis (H) (Differential travel)	1 to 20% of sensing distance		
Assured operating dist. (S _a)	0 ≤ S _a ≤ 0.81 S _n		
Effective operating dist. (S _r)	0.9 x S _n ≤ S _r ≤ 1.1 x S _n		
Usable operating dist. (S _m)	0.9 x S _r ≤ S _u ≤ 1.1 x S _r		
Ambient temperature			
Operating	-25° to +70°C (-13° to +158°F)		
Storage	-30° to +80°C (-22° to +176°F)		



Dimensions



Wiring Diagram



Installation Hints

<p><i>To avoid interference from inductive voltage/current peaks, separate the prox. switch power cables from any other power cables, e.g. motor, contactor or solenoid cables</i></p>	<p><i>Relief of cable strain</i></p> <p>Incorrect</p> <p>Correct</p> <p>The cable should not be pulled</p>	<p><i>Protection of the sensing face</i></p> <p>A proximity switch should not serve as mechanical stop</p>	<p><i>Switch mounted on mobile carrier</i></p> <p>Any repetitive flexing of the cable should be avoided</p>
--	--	--	---

Delivery Contents

Inductive proximity switch IG12FSF04D.
Packaging: plastic bag