



Chipsmall Limited consists of a professional team with an average of over 10 year of expertise in the distribution of electronic components. Based in Hongkong, we have already established firm and mutual-benefit business relationships with customers from,Europe,America and south Asia,supplying obsolete and hard-to-find components to meet their specific needs.

With the principle of “Quality Parts,Customers Priority,Honest Operation,and Considerate Service”,our business mainly focus on the distribution of electronic components. Line cards we deal with include Microchip,ALPS,ROHM,Xilinx,Pulse,ON,Everlight and Freescale. Main products comprise IC,Modules,Potentiometer,IC Socket,Relay,Connector.Our parts cover such applications as commercial,industrial, and automotives areas.

We are looking forward to setting up business relationship with you and hope to provide you with the best service and solution. Let us make a better world for our industry!



Contact us

Tel: +86-755-8981 8866 Fax: +86-755-8427 6832

Email & Skype: info@chipsmall.com Web: www.chipsmall.com

Address: A1208, Overseas Decoration Building, #122 Zhenhua RD., Futian, Shenzhen, China



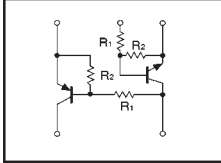
Power management (dual digital transistors)

FMC6A

●Features

- 1) Both the DTA115E and DTC115E chips in a SMT package.

●Circuit diagram



●Absolute maximum ratings (Ta=25°C)

Parameter	Symbol	Limits	Unit
Supply voltage	V _{CC}	50	V
Input voltage	V _{IN}	40	V
		-10	
Output current	I _C	100	mA
	I _O	20	
Power dissipation	P _d	300 (TOTAL)	mW
Storage temperature	T _{stg}	-55~+150	°C

PNP type negative symbols have been omitted.

●Package, marking, and packaging specifications

Part No.	FMC6A
Package	SMT5
Marking	C6
Code	T148
Basic ordering unit (pieces)	3000

●Electrical characteristics (Ta=25°C)

Parameter	Symbol	Min.	Typ.	Max.	Unit	Conditions
Input voltage	V _{I(off)}	—	—	0.5	V	V _{CC} =5/-5V, I _O =100/-100 μA
	V _{I(on)}	3	—	—		
Output voltage	V _{O(on)}	—	0.1	0.3	V	I _C =5/-5mA, I _I =0.25/-0.25mA
Input current	I _I	—	—	0.15	mA	V _I =5/-5V
Output current	I _{O(off)}	—	—	0.5	μA	V _{CC} =50/-50V
DC current gain	G _I	82	—	—	—	I _O =5/-5mA, V _O =5/-5V
Transition frequency	f _T	—	250	—	MHz	V _{CE} =10V/-10V, I _E =-5mA/5mA, f=100MHz *
Input resistance	R _I	70	100	130	kΩ	—
Resistance ratio	R ₂ /R ₁	0.8	1	1.2	—	—

* Transition frequency of mounted transistor. PNP type negative symbols have been omitted.

(94S-830-AC115E)

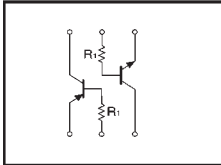
Power management (dual digital transistors)

IMD1A

●Features

- 1) Both the DTA124T and DTC124T chips in a SMT package.

●Circuit diagram



●Absolute maximum ratings (Ta=25°C)

Parameter	Symbol	Limits	Unit
Collector-base voltage	V _{CEB}	50	V
Collector-emitter voltage	V _{CEO}	50	V
Emitter-base voltage	V _{EB0}	5	V
Collector current	I _C	100	mA
Collector power dissipation	P _C	300 (TOTAL)	mW *
Junction temperature	T _J	150	°C
Storage temperature	T _{stg}	-55~+150	°C

* 200mW per element must not be exceeded. PNP type negative symbols have been omitted.

●Package, marking, and packaging specifications

Type	IMD1A
Package	SMT6
Marking	D1
Code	T108
Basic ordering unit (pieces)	3000

●Electrical characteristics (Ta=25°C)

Parameter	Symbol	Min.	Typ.	Max.	Unit	Conditions
Collector-base breakdown voltage	BV _{CEB}	50	—	—	V	I _C =50 μA
Collector-emitter breakdown voltage	BV _{CEO}	50	—	—	V	I _C =1mA
Emitter-base breakdown voltage	BV _{EB0}	5	—	—	V	I _E =50 μA
Collector cutoff current	I _{CBO}	—	—	0.5	μA	V _{CB} =50V
Emitter cutoff current	I _{EB0}	—	—	0.5	μA	V _{EB} =4V
Collector-emitter saturation voltage	V _{CE(sat)}	—	—	0.3	V	I _C /I _E =5mA/0.5mA
DC current transfer ratio	h _{FE}	100	250	600	—	V _{CE} =5V, I _C =1mA
Transition frequency	f _T	—	250	—	MHz	V _{CE} =10V, I _E =-5mA, f=100MHz *
Input resistance	R _I	15.4	22	28.6	kΩ	—

* Transition frequency of mounted transistor. PNP type negative symbols have been omitted.

(96-458-AC124T)