



Chipsmall Limited consists of a professional team with an average of over 10 year of expertise in the distribution of electronic components. Based in Hongkong, we have already established firm and mutual-benefit business relationships with customers from,Europe,America and south Asia,supplying obsolete and hard-to-find components to meet their specific needs.

With the principle of "Quality Parts,Customers Priority,Honest Operation,and Considerate Service",our business mainly focus on the distribution of electronic components. Line cards we deal with include Microchip,ALPS,ROHM,Xilinx,Pulse,ON,Everlight and Freescale. Main products comprise IC,Modules,Potentiometer,IC Socket,Relay,Connector.Our parts cover such applications as commercial,industrial, and automotives areas.

We are looking forward to setting up business relationship with you and hope to provide you with the best service and solution. Let us make a better world for our industry!



## Contact us

Tel: +86-755-8981 8866 Fax: +86-755-8427 6832

Email & Skype: info@chipsmall.com Web: www.chipsmall.com

Address: A1208, Overseas Decoration Building, #122 Zhenhua RD., Futian, Shenzhen, China





**Premier Notebook Clip-On Camera**

# **User's Guide**

Model:IN3003CAM2



**CAUTION:** To use this device properly, please read the user's guide before installation.

Tripp Lite World Headquarters  
1111 W.35th Street  
Chicago,IL 60609 USA  
(773)869-1234  
[www.triplite.com](http://www.triplite.com)

Copyright ©Tripp Lite.All rights reserved.All trademarks are the property of their respective owners.The policy of Tripp Lite is one of continuous improvement. All specifications are subject to change without notice.



## INSTALLATION (HOW TO SETUP PREMIER CAM)

### ● Driver's Installation Instruction for Windows 98/ME/2000

**\*NOTE:** Please Uninstall All Previous Installed Premier Cam Before Installing Triplite Premier Cam. **DO NOT CONNECT** Triplite Premier Cam To The Computer Until Its Driver Is Installed!

1. Insert the included CD into the CD-ROM: The Autorun Menu Window will popup, move the mouse cursor to and click on "Driver".
2. While preparing to install the driver, the Driver Setup Wizard will now being activated.
3. When the Driver Setup Wizard is activated and ready, the popup window will be idling. Click on "Next >" to continue the Installation Process.
4. When the Installation Process is completed, restart the Computer as the Driver Setup Wizard requests by Clicking on "Finish".
5. After the Driver Installation is done, it will take you back to the Autorun Menu Window. Close the Autorun Menu Window.
6. Now, Connect Triplite CAM to an available USB Port on the back of the Computer.
7. Computer will now automatically install and ready Triplite CAM. To verify if the Triplite CAM is installed, Click on "Start" on the Left Bottom corner of the screen. Click on "Control Panel" >>"System" >> "Hardware" >> "Device Manager">> "Imaging Device".

### ● Driver Installation Instructions for Windows XP

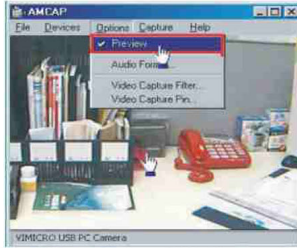
**\*NOTE:** Please Uninstall All Previous Installed Premier Cam Before Installing Triplite CAM. **DO NOT CONNECT** Triplite CAM to The Computer Until Its Driver Is Installed!

1. Insert the included CD into the CD-ROM: The Autorun Menu Window will popup, move the mouse cursor to and click on "Driver".
2. While preparing to install the driver, the Driver Setup Wizard will now being activated.
3. When the Driver Setup Wizard is activated and ready, the popup window will be idling. Click on "Next >" to continue the Installation Process.
4. Windows XP will now popup "Found New Hardware Wizard" window. Select "Install from a list of specific location (Advanced)". Then, Click on "Next".
5. Next Screen, "Please choose your search and installation options", Click on "Don't search, I will choose the driver to install". Then Click on "Next".
6. Next Screen, "Select the device driver you want to install for this hardware", Click on "Triplite CAM" in the frame. Then, Click on "Next".
7. Next Screen, "Please wait while the wizard installs the software...", the driver and its needed files are in process to be installed.
8. When the Installation Process is completed, Restart the Computer as the Driver Setup Wizard requests by Clicking on "Finish".
9. After the Driver Installation is done, it will take you back to the Autorun Menu Window. Close the Autorun Menu Window.

## USER GUIDE

### HOW TO OPERATE CAM in Win 98/ME/2000/XP

1. To Turn On the Tripplite CAM, Click on **"Start"** from the Taskbar. Choose **"Programs"**. Select **"Tripplite CAM"**. Choose **"AMCAP"**.
2. In AMCAP CAM Program, Click on **"Options"** and Select **"Preview"**. Now, the CAM is ready to work!



3. For the Best Video Quality, Under **"Option"**, Choose **"Video Capture Filter"**, and set Refreshing Rate to **"60Hz"**.
4. To Capture Instant Image or Video, Click on **"Capture"** and Choose the function as desired. Follow the on screen steps to set an Instant Image and/or Video Folder where you may save the Captured file.

#### **USB PC Camera**



#### **Specification**

Image Sensor	1/4" color progressive CMOS, 640×480 pixels
Focus Range	10cm to infinity
Operating System	Microsoft Windows 98/ME/2000/XP
Video Capture Res.	640×480, 320×240, 352×288
Snap Shot Button	Software
PC Interface	USB
Power	Powered from USB port