



Chipsmall Limited consists of a professional team with an average of over 10 year of expertise in the distribution of electronic components. Based in Hongkong, we have already established firm and mutual-benefit business relationships with customers from,Europe,America and south Asia,supplying obsolete and hard-to-find components to meet their specific needs.

With the principle of “Quality Parts,Customers Priority,Honest Operation,and Considerate Service”,our business mainly focus on the distribution of electronic components. Line cards we deal with include Microchip,ALPS,ROHM,Xilinx,Pulse,ON,Everlight and Freescale. Main products comprise IC,Modules,Potentiometer,IC Socket,Relay,Connector.Our parts cover such applications as commercial,industrial, and automotives areas.

We are looking forward to setting up business relationship with you and hope to provide you with the best service and solution. Let us make a better world for our industry!



## Contact us

Tel: +86-755-8981 8866 Fax: +86-755-8427 6832

Email & Skype: [info@chipsmall.com](mailto:info@chipsmall.com) Web: [www.chipsmall.com](http://www.chipsmall.com)

Address: A1208, Overseas Decoration Building, #122 Zhenhua RD., Futian, Shenzhen, China



## Features

- 12 x 12 LED Matrix
- Single Line Data Transmission
- Specific Shaping Transmit Technology
- PWM Control
- Stackable Up to 4 Modules
- Easy to Use Plug and Play

## Description

12 x 12 Digital LED Matrix is a compact, easy to use smart display. It is capable of displaying different language characters as well as many unique symbols. The INCM88001 is also stackable to make a larger matrix to showcase additional information.

## Key Specifications

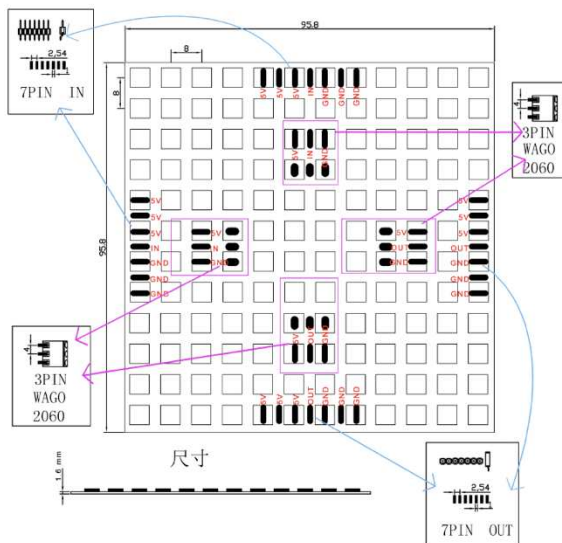
LED Component	Inolux IN-PI554FCH
LED Count	144
Board Material	FR4
Color	Red / Green / Blue
Operating temperature	-45°C~+85°C
Dimension	95.8 x 95.8 x 1.6 mm
Input voltage	DC 4.5 V~5.3 V
LED Pitch	8.0 mm
Grey Scale Level	256
Data Transfer Rate	800 Kbp/s at 30 frames per second
Compatible Connector	3PIN WAGO 2060 P2.54mm 7Pin header / connector

## Applications

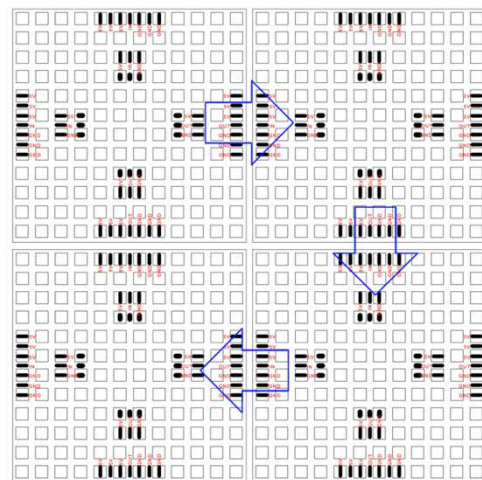
- Indoor Display
- Information Signage
- DIY Devices



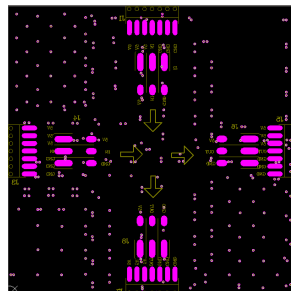
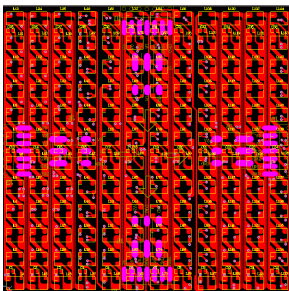
## Dimensions



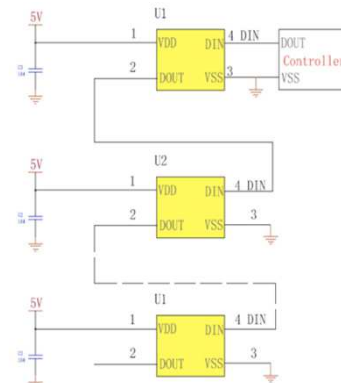
## Stacking Method



## Gerber Details (detail files available upon request)



## LED Connection Scheme



\*For further LED Controlling details, please refer to the IN-PI554FCH datasheet.