



Chipsmall Limited consists of a professional team with an average of over 10 year of expertise in the distribution of electronic components. Based in Hongkong, we have already established firm and mutual-benefit business relationships with customers from,Europe,America and south Asia,supplying obsolete and hard-to-find components to meet their specific needs.

With the principle of “Quality Parts,Customers Priority,Honest Operation,and Considerate Service”,our business mainly focus on the distribution of electronic components. Line cards we deal with include Microchip,ALPS,ROHM,Xilinx,Pulse,ON,Everlight and Freescale. Main products comprise IC,Modules,Potentiometer,IC Socket,Relay,Connector.Our parts cover such applications as commercial,industrial, and automotives areas.

We are looking forward to setting up business relationship with you and hope to provide you with the best service and solution. Let us make a better world for our industry!



Contact us

Tel: +86-755-8981 8866 Fax: +86-755-8427 6832

Email & Skype: info@chipsmall.com Web: www.chipsmall.com

Address: A1208, Overseas Decoration Building, #122 Zhenhua RD., Futian, Shenzhen, China



DO NOT SCALE FROM THIS PRINT

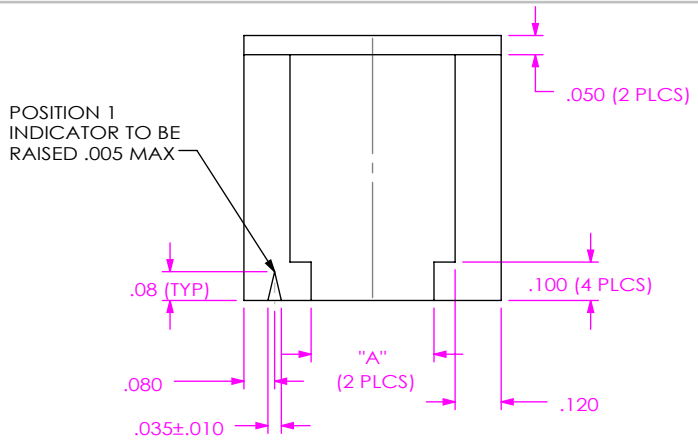


TABLE 1

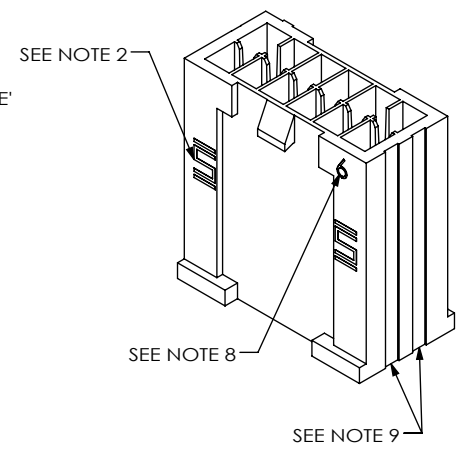
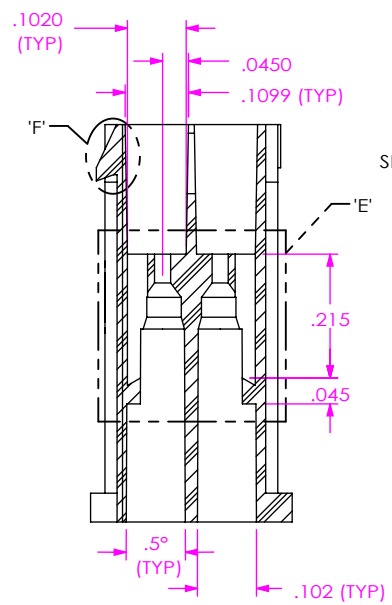
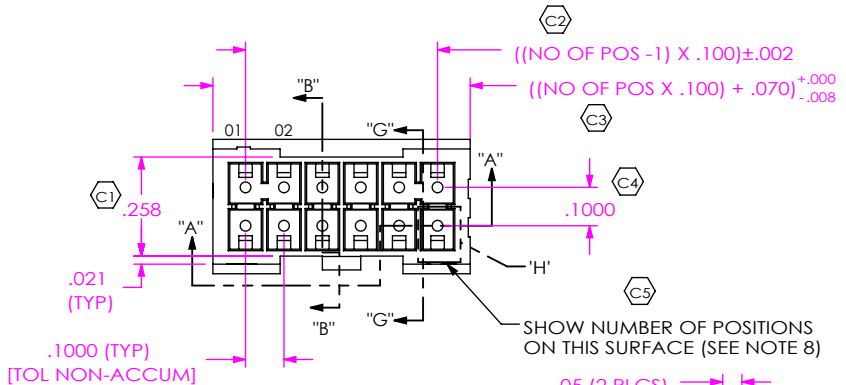
POSITIONS	"A"
-04	.220
-05 THRU -25	.320

IPM1-XX-X-XX

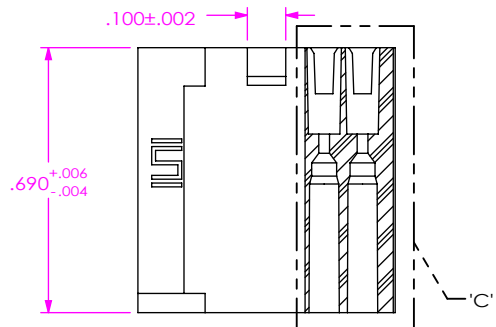
No OF POSITIONS
-02 THRU -25
(PER ROW)

- OPTIONS**
(LEAVE BLANK FOR NO OPTIONS)
-GP: GUIDE POST (SEE SHT 4, FIG. 5)
(ONLY AVAILABLE ON DOUBLE ROW)
*-SF: SPLASH FLANGE
(COLOR: BLACK;
-03, -04, & -05 TOOLED ONLY;
NOT AVAILABE WITH -S OR -GP)
- ROW SPECIFICATION**
-D: DOUBLE
-S: SINGLE (SEE SHT 3, FIG. 2 & 3)

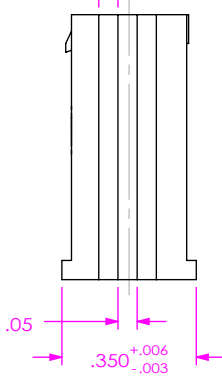
FIG 1
IPM1-06-D SHOWN



SECTION "B"- "B"
SCALE 3 : 1



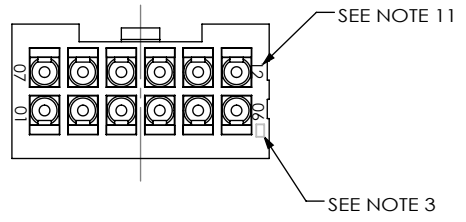
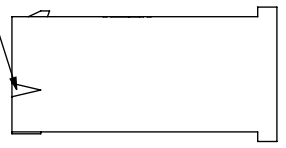
SECTION "A"- "A"
SCALE 2 : 1



NOTES:

1. C REPRESENTS A CRITICAL DIMENSION.
2. SAMTEC LOGO SHALL APPEAR AT TWO EQUALLY SPACED LOCATIONS ON SURFACE SHOWN, APPROXIMATELY .094(2.39) x .055(1.40).
3. ALL MULTIPLE CAVITY MOLDS SHALL IDENTIFY EACH CAVITY WITH A DOT DESIGNATION LOCATED WHERE SHOWN.
4. ALL IDENTIFICATION MARKS MUST NOT STAND GREATER THAN .002(0.05) OFF THE SURFACE OF THE PART.
5. MOLDED SURFACES SHALL BE CONSISTENT AND SMOOTH. SURFACES TO BE FREE OF SCRATCHES, NICKS, SINK AREAS, VOIDS OR OTHER BLEMISHES.
6. MAX ALLOWABLE BOW; TOP/BOTTOM: .0025(0.064). SIDE/SIDE: .0020(0.051).
7. PART TO BE SYMMETRIC ABOUT CENTERLINE WITHIN ±.002 UNLESS INDICATED OTHERWISE.
8. NUMBER OF POSITIONS (PER ROW) TO BE SHOWN IN THIS AREA EXCLUDING 2, 3, & 4 POSITIONS. SIZE SIMILAR TO POSITION 1 INDICATOR.
9. GATE PADS MUST BE RECESSED .005.
10. END CORES ARE POLARIZED. CONFIRM GEOMETRY RELATIVE TO POSITION 1 INDICATOR & GATE PADS.
11. END POSITIONS TO BE SPECIFIED WHERE SHOWN.

POSITION 1 INDICATOR TO BE RECESSED .0005 MAX



UNLESS OTHERWISE SPECIFIED, DIMENSIONS ARE IN INCHES.
TOLERANCES ARE:
DECIMALS ANGLES
.XX: ±.01 2°
.XXX: ±.003
.XXXX: ±.0015

PROPRIETARY NOTE
THIS DOCUMENT CONTAINS CONFIDENTIAL AND PROPRIETARY INFORMATION AND ALL DESIGN, MANUFACTURING, REPRODUCTION, USE, PATENT RIGHTS AND SALES RIGHTS ARE EXPRESSLY RESERVED BY SAMTEC, INC. THIS DOCUMENT SHALL NOT BE DISCLOSED, IN WHOLE OR PART, TO ANY UNAUTHORIZED PERSON OR ENTITY NOR REPRODUCED, TRANSFERRED OR INCORPORATED IN ANY OTHER PROJECT IN ANY MANNER WITHOUT THE EXPRESS WRITTEN CONSENT OF SAMTEC, INC.



520 PARK EAST BLVD, NEW ALBANY, IN 47150
PHONE: 812-944-6733 FAX: 812-948-5047
e-Mail: info@SAMTEC.com code 55322

MATERIAL: DO NOT SCALE DRAWING SHEET SCALE: 2:1
ZYTEL PA66 101F, COLOR: WHITE
-SF: BLACK

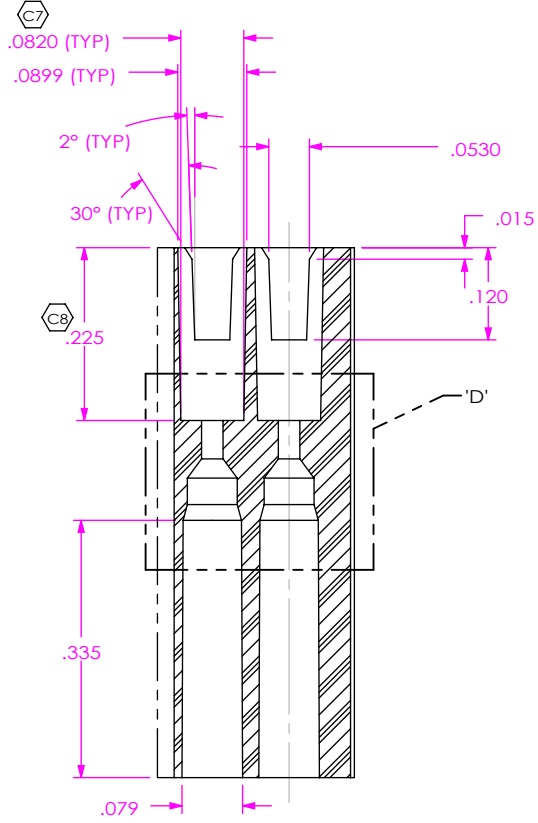
MAX REGRIND: 25%
MAX FLASH ALLOWED: .004
MAX GATE VESTIGE: .002

C:\EnterpriseVault\DWG\MISC\MKTG\IPM1-XX-X-XX-MKT.SLDDRW

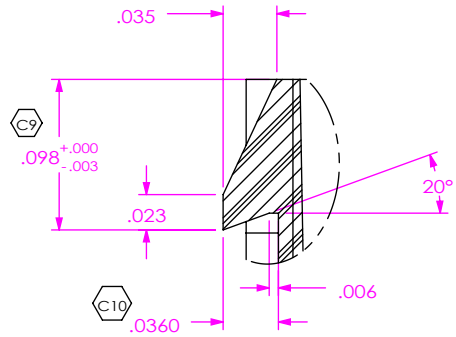
DESCRIPTION:
.100 SHROUDED TERMINAL CABLE END

DWG. NO.
IPM1-XX-X-XX

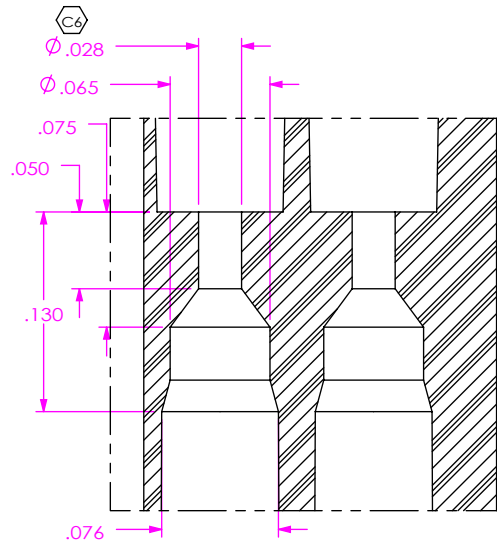
BY: D. SCHMELZ 12/04/2008 SHEET 1 OF 4



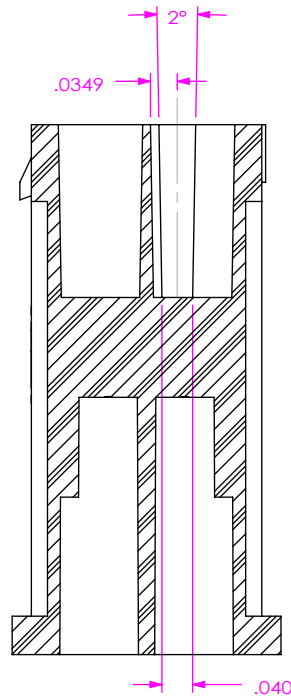
DETAIL 'C'
SCALE 4 : 1



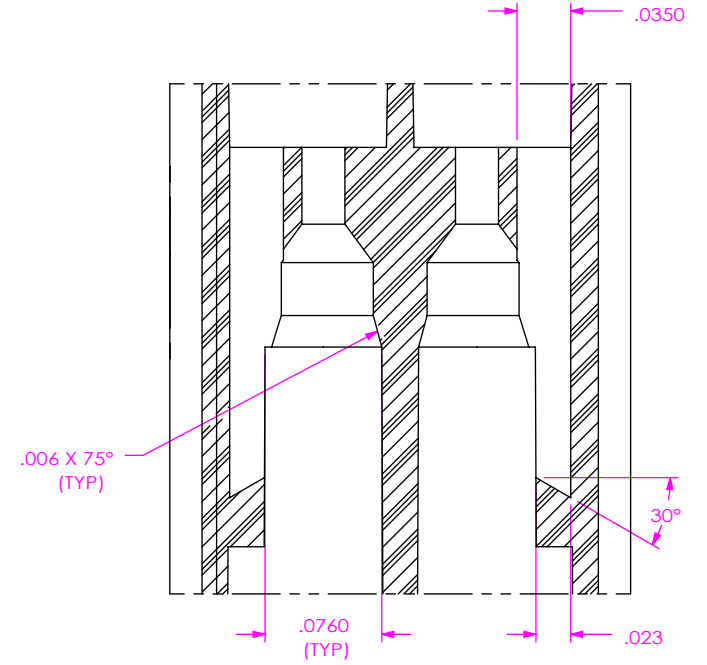
DETAIL 'F'
SCALE 8 : 1



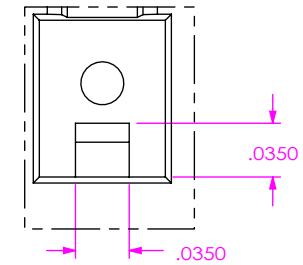
DETAIL 'D'
SCALE 8 : 1



SECTION 'G'-'G'
SCALE 4 : 1



DETAIL 'E'
SCALE 8 : 1



DETAIL 'H'
SCALE 8 : 1

PROPRIETARY NOTE
THIS DOCUMENT CONTAINS CONFIDENTIAL AND PROPRIETARY INFORMATION AND ALL DESIGN, MANUFACTURING, REPRODUCTION, USE, PATENT RIGHTS AND SALES RIGHTS ARE EXPRESSLY RESERVED BY SAMTEC, INC. THIS DOCUMENT SHALL NOT BE DISCLOSED, IN WHOLE OR PART, TO ANY UNAUTHORIZED PERSON OR ENTITY NOR REPRODUCED, TRANSFERRED OR INCORPORATED IN ANY OTHER PROJECT IN ANY MANNER WITHOUT THE EXPRESS WRITTEN CONSENT OF SAMTEC, INC.

DO NOT SCALE DRAWING

SHEET SCALE: 3:1

samtec

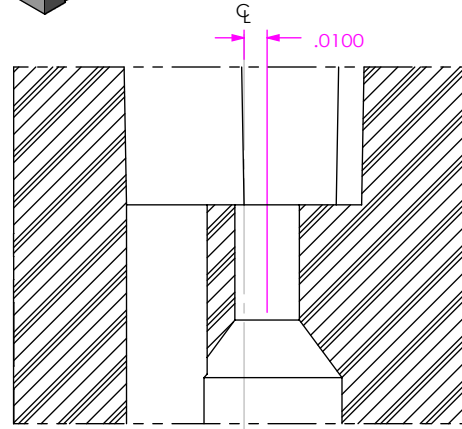
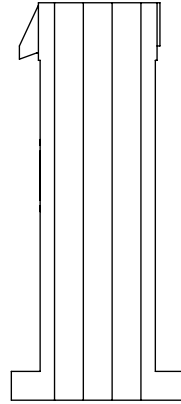
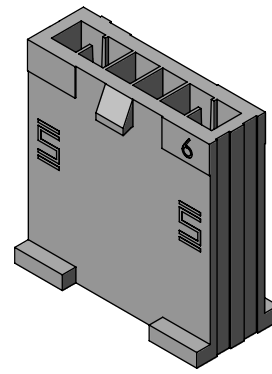
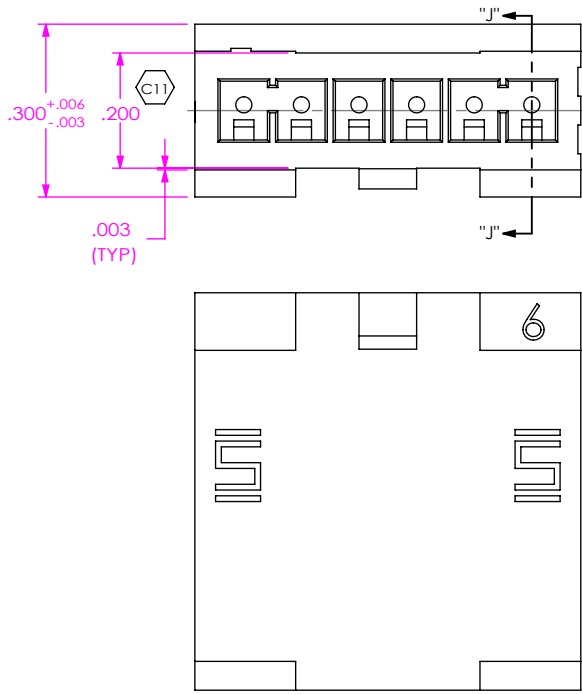
520 PARK EAST BLVD, NEW ALBANY, IN 47150
PHONE: 812-944-6733 FAX: 812-948-5047
e-Mail: info@SAMTEC.com code 55322

DESCRIPTION:
.100 SHROUDED TERMINAL CABLE END

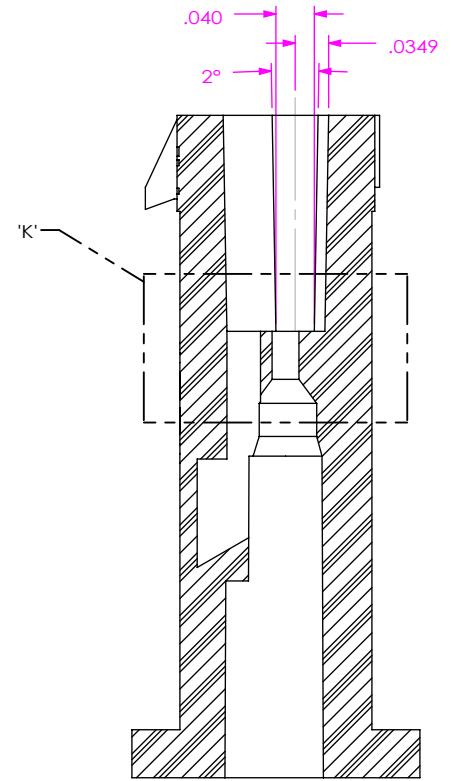
DWG. NO.
IPM1-XX-X-XX

BY: D. SCHMELZ 12/04/2008 SHEET 2 OF 4

FIG 2
IPM1-06-S SHOWN
(DIFFERENT AS SHOWN, OTHERWISE SAME AS FIG 1)



DETAIL 'K'
SCALE 12:1



SECTION "J"-J"
SCALE 5:1

FIG 3
APPLIES TO -02 & -03 POSITIONS ONLY
IPM1-02-S SHOWN
(DIFFERENT AS SHOWN, OTHERWISE SAME AS FIG 2)

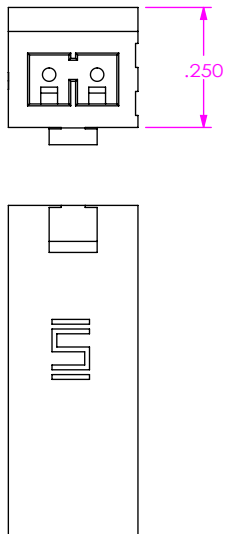
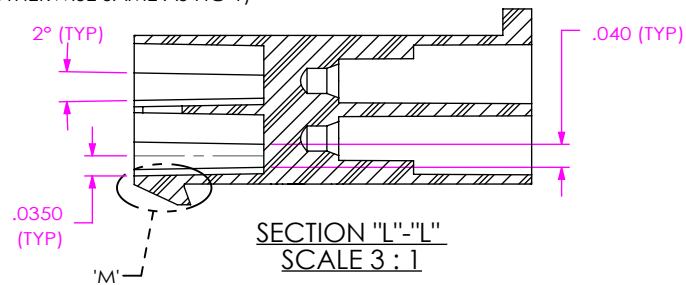
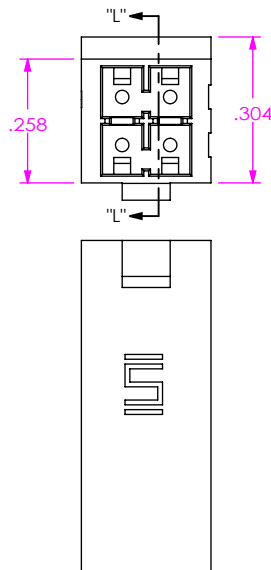


FIG 4
APPLIES TO -02 & -03 POSITIONS ONLY
IPM1-02-D SHOWN
(DIFFERENT AS SHOWN, OTHERWISE SAME AS FIG 1)



SECTION "L"-L"
SCALE 3:1

DETAIL 'M'
SCALE 6:1

C:\EnterpriseVault\DWG\MISC\MKTG\IPM1-XX-X-XX-MKT.SLDDRW

PROPRIETARY NOTE
THIS DOCUMENT CONTAINS CONFIDENTIAL AND PROPRIETARY INFORMATION AND ALL DESIGN, MANUFACTURING, REPRODUCTION, USE, PATENT RIGHTS AND SALES RIGHTS ARE EXPRESSLY RESERVED BY SAMTEC, INC. THIS DOCUMENT SHALL NOT BE DISCLOSED, IN WHOLE OR IN PART, TO ANY UNAUTHORIZED PERSON OR ENTITY NOR REPRODUCED, TRANSFERRED OR INCORPORATED IN ANY OTHER PROJECT IN ANY MANNER WITHOUT THE EXPRESS WRITTEN CONSENT OF SAMTEC, INC.

DO NOT SCALE DRAWING

SHEET SCALE: 3:1



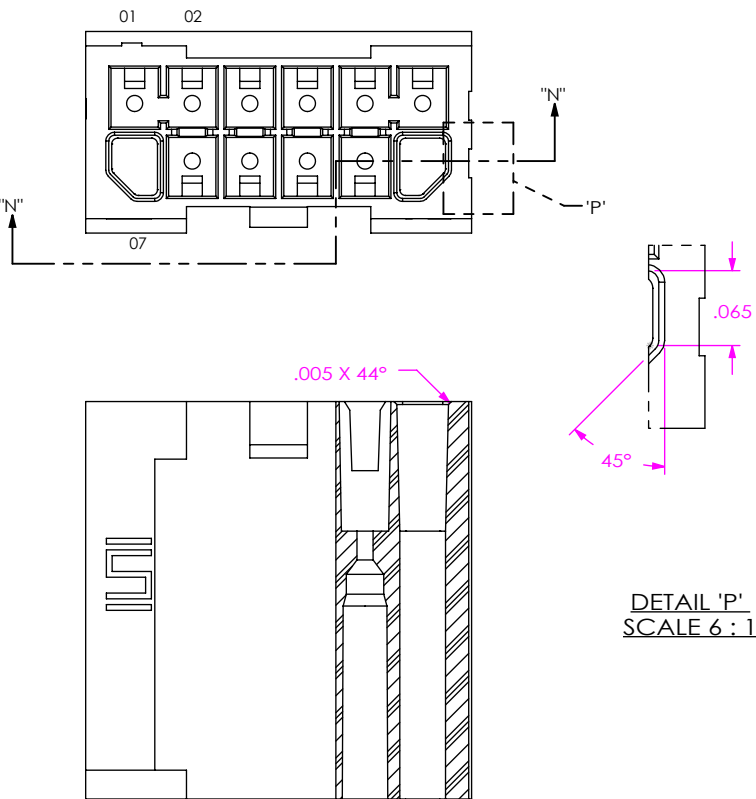
520 PARK EAST BLVD. NEW ALBANY, IN 47150
PHONE: 812-944-6733 FAX: 812-948-5047
e-Mail: info@SAMTEC.com code 55322

DESCRIPTION:
.100 SHROUDED TERMINAL CABLE END

DWG. NO.
IPM1-XX-X-XX

BY: D. SCHMELZ 12/04/2008 SHEET 3 OF 4

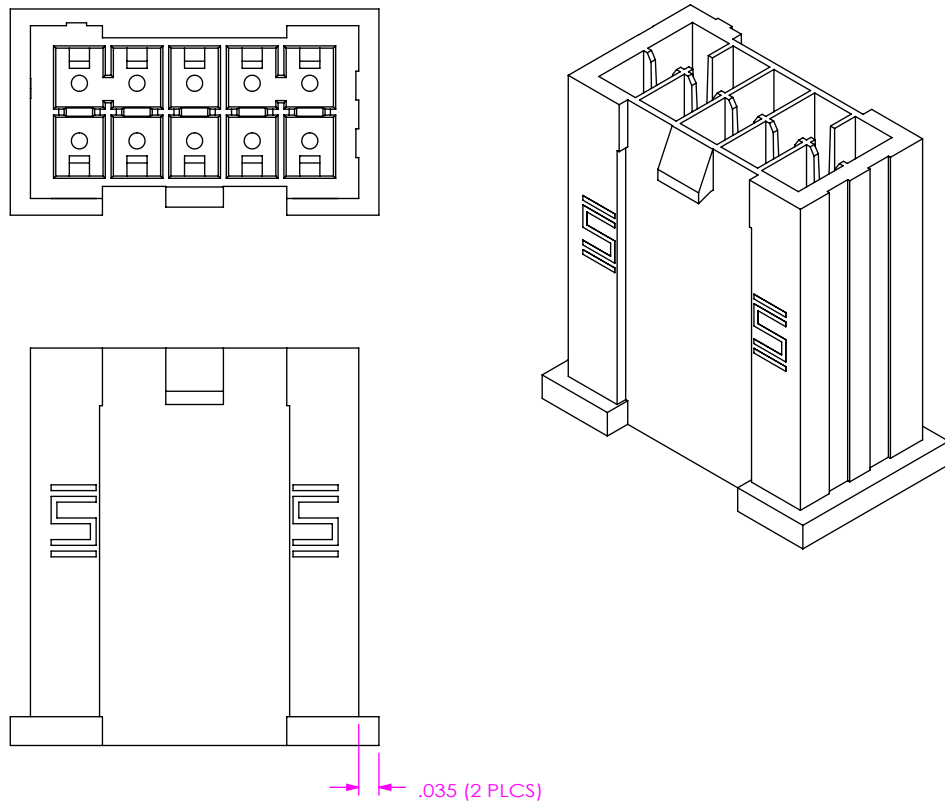
FIG 5
 IPM1-06-D-GP SHOWN
 (SAME AS FIG 1, UNLESS OTHERWISE STATED)
 (ONLY AVAILABLE ON DOUBLE ROW)



SECTION "N"-N"
 SCALE 3 : 1

DETAIL 'P'
 SCALE 6 : 1

FIG 6
 *IPM1-05-D-SF SHOWN
 (DIFFERENT AS SHOWN, OTHERWISE SAME AS FIG 1)
 (-03, -04, & -05 TOOLED ONLY, *NOT RELEASED FOR PRODUCTION)



.035 (2 PLCS)

PROPRIETARY NOTE

THIS DOCUMENT CONTAINS CONFIDENTIAL AND PROPRIETARY INFORMATION AND ALL DESIGN, MANUFACTURING, REPRODUCTION, USE, PATENT RIGHTS AND SALES RIGHTS ARE EXPRESSLY RESERVED BY SAMTEC, INC. THIS DOCUMENT SHALL NOT BE DISCLOSED, IN WHOLE OR PART, TO ANY UNAUTHORIZED PERSON OR ENTITY NOR REPRODUCED, TRANSFERRED OR INCORPORATED IN ANY OTHER PROJECT IN ANY MANNER WITHOUT THE EXPRESS WRITTEN CONSENT OF SAMTEC, INC.

SHEET SCALE: 3:1



520 PARK EAST BLVD, NEW ALBANY, IN 47150
 PHONE: 812-944-6733 FAX: 812-948-5047
 e-Mail: info@SAMTEC.com code 55322

DESCRIPTION:
 .100 SHROUDED TERMINAL CABLE END

DWG. NO.
 IPM1-XX-X-XX

BY: D. SCHMELZ 12/04/2008 SHEET 4 OF 4