



Chipsmall Limited consists of a professional team with an average of over 10 year of expertise in the distribution of electronic components. Based in Hongkong, we have already established firm and mutual-benefit business relationships with customers from,Europe,America and south Asia,supplying obsolete and hard-to-find components to meet their specific needs.

With the principle of “Quality Parts,Customers Priority,Honest Operation,and Considerate Service”,our business mainly focus on the distribution of electronic components. Line cards we deal with include Microchip,ALPS,ROHM,Xilinx,Pulse,ON,Everlight and Freescale. Main products comprise IC,Modules,Potentiometer,IC Socket,Relay,Connector.Our parts cover such applications as commercial,industrial, and automotives areas.

We are looking forward to setting up business relationship with you and hope to provide you with the best service and solution. Let us make a better world for our industry!



Contact us

Tel: +86-755-8981 8866 Fax: +86-755-8427 6832

Email & Skype: info@chipsmall.com Web: www.chipsmall.com

Address: A1208, Overseas Decoration Building, #122 Zhenhua RD., Futian, Shenzhen, China





IQS680EV02 Overview

Combination sensor with dual channel capacitive proximity/touch, Passive Infrared Radial sensor and metal detection capabilities

The IQS680 ProxFusion® IC is a multifunctional Capacitance, Passive Infrared Radial (PIR) & Inductance sensor designed for applications such as domestic energy efficient lighting applications with movement detection. The IQS680 is an ultra-low power solution designed for short or long-term activations through any of the sensing channels. The IQS680 operates standalone or via the I²C protocol and custom configurations are stored in an on-chip EEPROM.

EV-Kit Overview

- PIR sensing (Movement sensing)
- Capacitive sensing
- Inductive sensing (Requires writing to the EEPROM)
- Sample coil/touch pad supplied

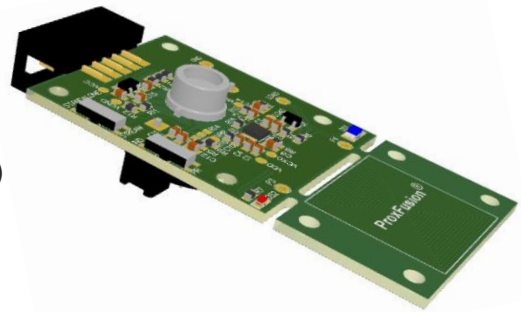


Figure 1: IQS680EV02 Orthogonal view

Evaluation Modes

- Standalone Mode (Default)
 - Events shown by LED's
- Connect IQS680EV02 via a CT210A USB Dongle¹ to PC GUI
 - Raw information displayed in GUI
- Assemble the module into a mock-up application and test
 - Sample inductive coil/touch pad supplied
- Connect custom coil or touch pad to sensor board

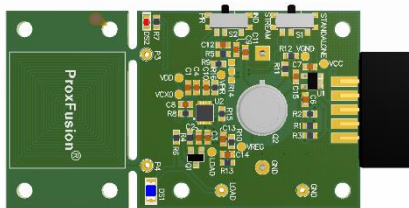


Figure 2: IQS680EV02 Top view

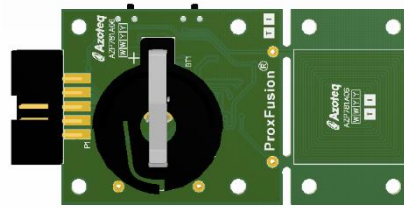


Figure 3: IQS680EV02 Bottom view

Applications

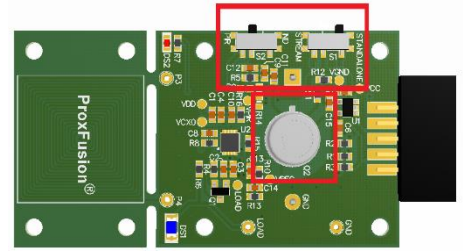
- Under Cabinet Lighting
- Standard PIR sensor cost reduction
- Battery powered PIR sensors solutions
- Smart Lights
- Night Lights
- Movement detection
- White goods and appliances
- Human Interface Devices
- Movement activated backlighting

¹Sold Separately



Quick Start (Default Settings)

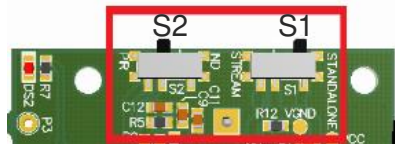
- Ensure that two 3V coin-cell batteries are inserted in the battery holder (6V).
- Place a lens over the PIR sensor and switch S1 to standalone and S2 to PIR mode.
- Wait for both LED's to go off (PIR is stabilizing).
- A movement will trigger the PIR sensor.
- A PIR event is indicated by the red LED and the blue LED has a predefined timeout.
- A capacitive touch on the coil will switch the light on/off and a long press will change the brightness of the blue LED.



Get the latest software at <http://www.azoteq.com/design/software.html>

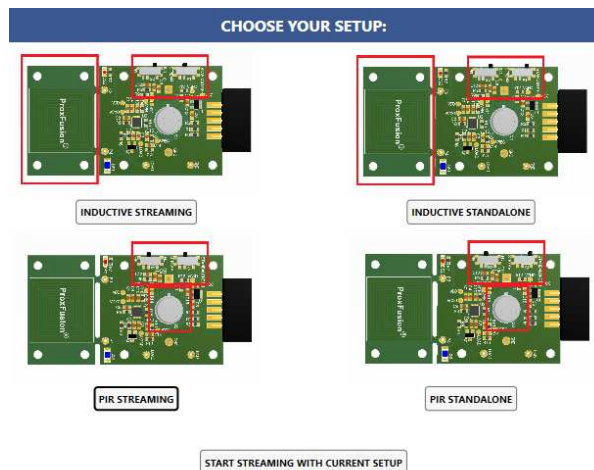
Hardware

- If standalone mode is required, ensure that two 3V coin-cell batteries are inserted in the battery holder (6V) and place a lens over the PIR sensor. Switch S1 to standalone mode and evaluate using battery power supply.
- If streaming mode is required, switch S1 to streaming mode and place board in a stationary position and connect IQS680EV02 via a CT210A USB Dongle to PC GUI.
- After programming the EEPROM with the GUI, select the desired UI (PIR/Inductive) using S2.



Software

- Click START STREAMING and choose the desired UI from the options below:

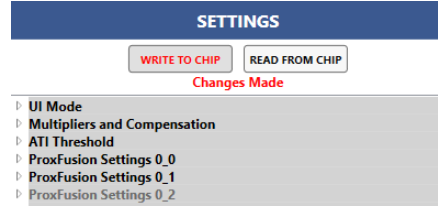


- The GUI will update the EEPROM and start streaming.
- Unplug the CT tool for Standalone mode and switch S1 to Standalone side.



Evaluation

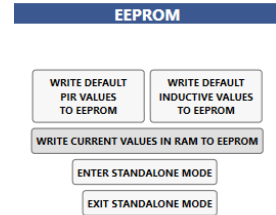
- Settings can be changed and written to the RAM of the IQS680.



- The raw information of the PIR or inductive sensor is displayed on the GUI.

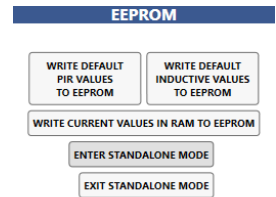


- Current settings in the RAM can be written to the EEPROM.



- The voltage can be changed to 1.8 V to evaluate the IC, but it should be noted that the blue LED will not go on at 1.8 V.

- Standalone mode can be entered with the current settings. Only after writing to the EEPROM, unplug cable from IQS680EV02 and switch S1 to Standalone mode. Evaluate using battery power supply.



- PIR Standalone
 - A movement will trigger the PIR sensor.
 - A PIR event is indicated by the red LED and the blue LED has a predefined timeout.
 - A capacitive touch on the coil will switch the light on/off and a long press will change the brightness of the blue LED.
- Inductive Standalone
 - Program the EEPROM using the GUI as described in this document.
 - Place a piece of metal on the inductive coil to trigger the inductive sensor.
 - The blue LED will switch off if metal is detected.