



Chipsmall Limited consists of a professional team with an average of over 10 year of expertise in the distribution of electronic components. Based in Hongkong, we have already established firm and mutual-benefit business relationships with customers from,Europe,America and south Asia,supplying obsolete and hard-to-find components to meet their specific needs.

With the principle of “Quality Parts,Customers Priority,Honest Operation,and Considerate Service”,our business mainly focus on the distribution of electronic components. Line cards we deal with include Microchip,ALPS,ROHM,Xilinx,Pulse,ON,Everlight and Freescale. Main products comprise IC,Modules,Potentiometer,IC Socket,Relay,Connector.Our parts cover such applications as commercial,industrial, and automotives areas.

We are looking forward to setting up business relationship with you and hope to provide you with the best service and solution. Let us make a better world for our industry!



Contact us

Tel: +86-755-8981 8866 Fax: +86-755-8427 6832

Email & Skype: info@chipsmall.com Web: www.chipsmall.com

Address: A1208, Overseas Decoration Building, #122 Zhenhua RD., Futian, Shenzhen, China



High and Low Side Driver

Features

- Floating channel designed for bootstrap operation
- Fully operational to +600V
- Tolerant to negative transient voltage
- dV/dt immune
- Gate drive supply range from 10 to 20V
- Undervoltage lockout for both channels
- 3.3V logic compatible
- Separate logic supply range from 3.3V to 20V
- Logic and power ground $\pm 5V$ offset
- CMOS Schmitt-triggered inputs with pull-down
- Cycle by cycle edge-triggered shutdown logic
- Matched propagation delay for both channels
- Outputs in phase with inputs

Description

The IR25607 is a high voltage, high speed power MOSFET and IGBT driver with independent high and low side referenced output channels. Proprietary HVIC and latch immune CMOS technologies enable ruggedized monolithic construction. Logic inputs are compatible with standard CMOS or LSTTL output, down to 3.3V logic. The output drivers feature a high pulse current buffer stage designed for minimum driver cross-conduction. Propagation delays are matched to simplify use in high frequency applications. The floating channel can be used to drive an N-channel power MOSFET or IGBT in the high side configuration which operates up to 600 V.

Product Summary

| | |
|-----------------------|-------------|
| V_{OFFSET} | 600V max. |
| $I_{O+/-}$ | 2A / 2A |
| V_{OUT} | 10 – 20V |
| Ton/off (typ.) | 120 & 94 ns |
| Delay Matching (typ.) | 20 ns |

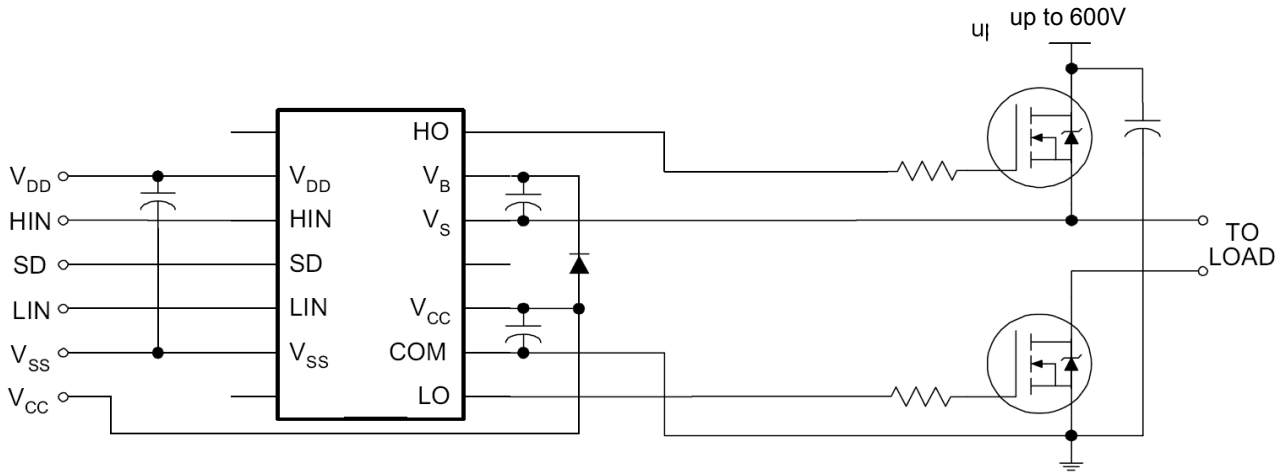
Package Options



Ordering Information

| Base Part Number | Package Type | Standard Pack | | Orderable Part Number |
|------------------|--------------|---------------|----------|-----------------------|
| | | Form | Quantity | |
| IR25607SPBF | SO16W | Tube | 45 | IR25607SPBF |
| IR25607SPBF | SO16W | Tape and Reel | 1000 | IR25607STRPBF |

Typical Connection Diagram



(Refer to Lead Assignments for correct pin configuration). This/These diagram(s) show electrical connections only. Please refer to our Application Notes and DesignTips for proper circuit board layout.

Absolute Maximum Ratings

Absolute maximum ratings indicate sustained limits beyond which damage to the device may occur. All voltage parameters are absolute voltages referenced to COM. The thermal resistance and power dissipation ratings are measured under board mounted and still air conditions.

| Symbol | Definition | Min. | Max. | Units |
|------------|--|----------------|----------------|--------------------|
| V_B | High side floating supply voltage | -0.3 | 625 | V |
| V_S | High side floating supply offset voltage | $V_B - 25$ | $V_B + 0.3$ | |
| V_{HO} | High side floating output voltage | $V_S - 0.3$ | $V_B + 0.3$ | |
| V_{CC} | Low side and logic fixed supply voltage | -0.3 | 25 | |
| V_{LO} | Low side output voltage | -0.3 | $V_{CC} + 0.3$ | |
| V_{DD} | Logic supply voltage | -0.3 | $V_{SS} + 25$ | |
| V_{SS} | Logic supply offset voltage | $V_{CC} - 25$ | $V_{CC} + 0.3$ | |
| V_{IN} | Logic input voltage (HIN, LIN & SD) | $V_{SS} - 0.3$ | $V_{DD} + 0.3$ | |
| dVs/dt | Allowable offset supply voltage transient | — | 50 | V/ns |
| P_D | Package power dissipation @ $T_A \leq +25^\circ\text{C}$ | — | 1.25 | W |
| R_{thJA} | Thermal resistance, junction to ambient | — | 100 | $^\circ\text{C/W}$ |
| T_J | Junction temperature | — | 150 | $^\circ\text{C}$ |
| T_S | Storage temperature | -55 | 150 | |
| T_L | Lead temperature (soldering, 10 seconds) | — | 300 | |

Recommended Operating Conditions

For proper operation the device should be used within the recommended conditions. The V_S and V_{SS} offset ratings are tested with all supplies biased at 15V differential.

| Symbol | Definition | Min. | Max. | Units |
|----------|--|--------------|---------------|------------------|
| V_B | High side floating supply absolute voltage | $V_S + 10$ | $V_S + 20$ | V |
| V_S | High side floating supply offset voltage | † | 600 | |
| V_{HO} | High side floating output voltage | V_S | V_B | |
| V_{CC} | Low side fixed supply voltage | 10 | 20 | |
| V_{LO} | Low side output voltage | 0 | V_{CC} | |
| V_{DD} | Logic supply voltage | $V_{SS} + 3$ | $V_{SS} + 20$ | |
| V_{SS} | Logic supply offset voltage | -5 †† | 5 | |
| V_{IN} | Logic input voltage (HIN, LIN & SD) | V_{SS} | V_{DD} | |
| T_A | Ambient temperature | -40 | 125 | $^\circ\text{C}$ |

† Logic operational for V_S of -5 to +600V. Logic state held for V_S of -5V to -VBS. (Please refer to Design Tip DT97-3 for more details).

†† When $V_{DD} < 5V$, the minimum V_{SS} offset is limited to $-V_{DD}$.

Dynamic Electrical Characteristics

V_{BIAS} (V_{CC} , V_{BS} , V_{DD}) = 15V, C_L = 1000 pF, V_{SS} = COM and T_A = 25°C unless otherwise specified.

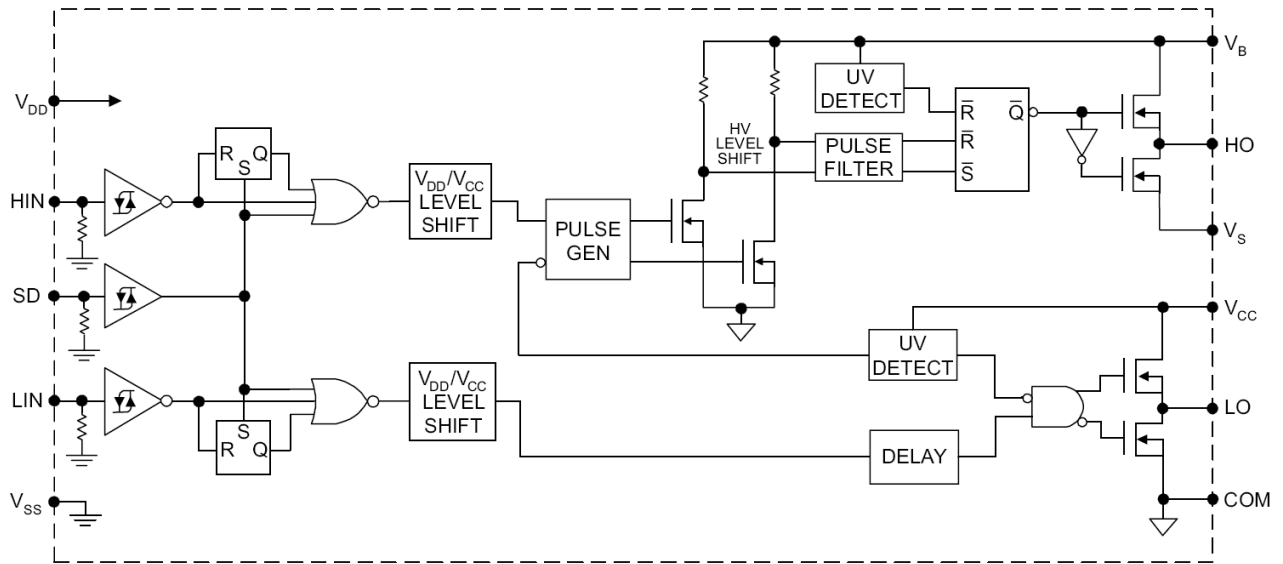
| Symbol | Definition | Min. | Typ. | Max. | Units | Test Conditions |
|-----------|-------------------------------------|------|------|------|-------|-----------------|
| t_{on} | Turn-on propagation delay | — | 120 | 150 | ns | $V_S = 0V$ |
| t_{off} | Turn-off propagation delay | — | 94 | 125 | | $V_S = 600V$ |
| t_{sd} | Shutdown propagation delay | — | 110 | 140 | | $V_S = 600V$ |
| t_r | Turn-on rise time | — | 25 | 35 | | |
| t_f | Turn-off fall time | — | 17 | 25 | | |
| MT | Delay matching, HS & LS turn-on/off | — | — | 20 | | |

Static Electrical Characteristics

V_{BIAS} (V_{CC} , V_{BS} , V_{DD}) = 15V, V_{SS} = COM and T_A = 25°C unless otherwise specified. The V_{IN} , V_{TH} and I_{IN} parameters are referenced to V_{SS} and are applicable to all three logic input leads: HIN, LIN and SD. The V_O and I_O parameters are referenced to COM and are applicable to the respective output leads: HO and LO.

| Symbol | Definition | Min. | Typ. | Max. | Units | Test Conditions |
|-------------|---|------|------|------|---------|---|
| V_{IH} | Logic "1" input voltage | 9.5 | — | — | V | |
| V_{IL} | Logic "0" input voltage | — | — | 6.0 | | |
| V_{OH} | High level output voltage, $V_{BIAS} - V_O$ | — | — | 1.2 | | $I_O = 0A$ |
| V_{OL} | Low level output voltage, V_O | — | — | 0.1 | | $I_O = 0A$ |
| I_{LK} | Offset supply leakage current | — | — | 50 | μA | $V_B = V_S = 600V$ |
| I_{QBS} | Quiescent V_{BS} supply current | — | 125 | 230 | | $V_{IN} = 0V$ or V_{DD} |
| I_{QCC} | Quiescent V_{CC} supply current | — | 180 | 340 | | $V_{IN} = 0V$ or V_{DD} |
| I_{QDD} | Quiescent V_{CC} supply current | — | 15 | 30 | | $V_{IN} = 0V$ or V_{DD} |
| I_{IN+} | Logic "1" input bias current | — | 20 | 40 | | $V_{IN} = V_{DD}$ |
| I_{IN-} | Logic "0" input bias current | — | — | 1 | | $V_{IN} = 0V$ |
| V_{BSUV+} | V_{BS} supply undervoltage positive going threshold | 7.5 | 8.6 | 9.7 | V | |
| V_{BSUV-} | V_{BS} supply undervoltage negative going threshold | 7.0 | 8.2 | 9.4 | | |
| V_{CCUV+} | V_{CC} supply undervoltage positive going threshold | 7.4 | 8.5 | 9.6 | | |
| V_{CCUV-} | V_{CC} supply undervoltage negative going threshold | 7.0 | 8.2 | 9.4 | | |
| I_{O+} | Output high short circuit pulsed current | 2 | 2.5 | — | A | $V_O = 0V$, $V_{IN} = V_{DD}$ $PW \leq 10 \mu s$ |
| I_{O-} | Output low short circuit pulsed current | 2 | 2.5 | — | | $V_O = 15V$, $V_{IN} = V_{DD}$ $PW \leq 10 \mu s$ |

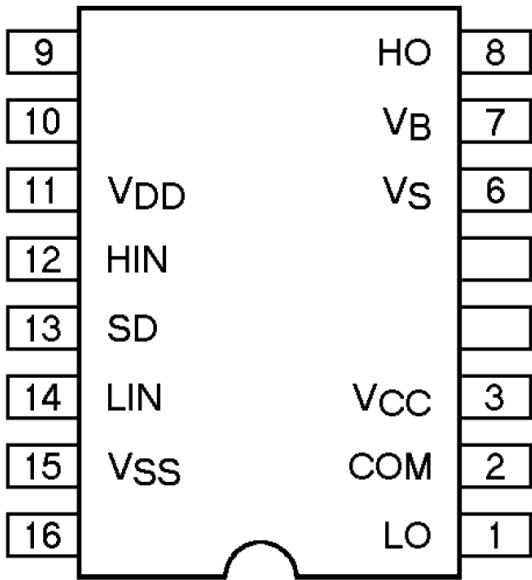
Functional Block Diagram



Lead Definitions

| Symbol | Description |
|-----------------|---|
| V _{DD} | Logic supply |
| HIN | Logic input for high side gate driver output (HO), in phase |
| SD | Logic input for shutdown |
| LIN | Logic input for low side gate driver output (LO), in phase |
| V _{SS} | Logic ground |
| V _B | High side floating supply |
| HO | High side gate drive output |
| V _S | High side floating supply return |
| V _{CC} | Low side and logic fixed supply |
| LO | Low side gate drive output |
| COM | Low side return |

Lead Assignments



Application Information and Additional Details

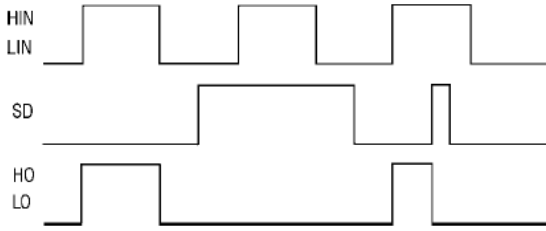


Figure 1. Input/Output Timing Diagram

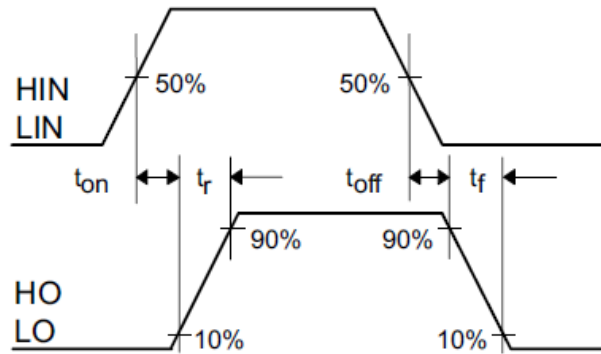


Figure 2. Switching Time Waveform Definitions

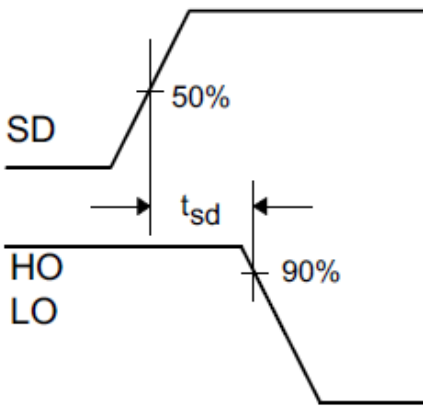


Figure 3. Shutdown Waveform Definitions

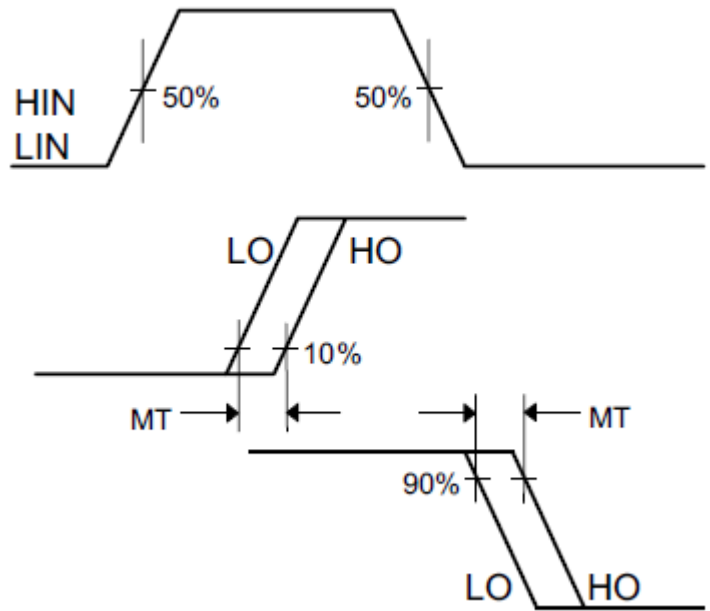


Figure 4. Delay matching Waveform Definitions

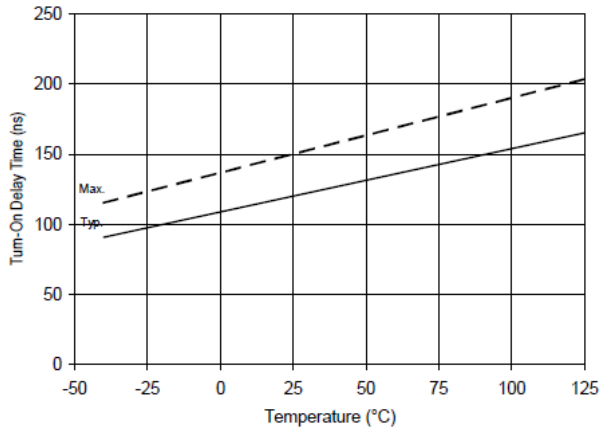


Figure 5A. Turn On Time vs. Temperature

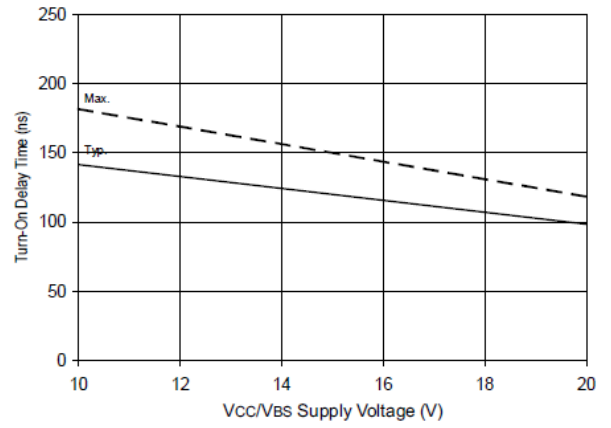


Figure 5B. Turn On Time vs. V_{CC}/V_{BS} Supply Voltage

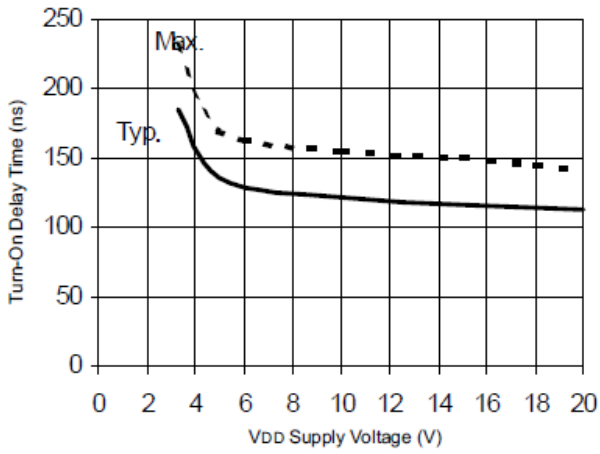


Figure 5C. Turn On Time vs. V_{DD} Supply Voltage

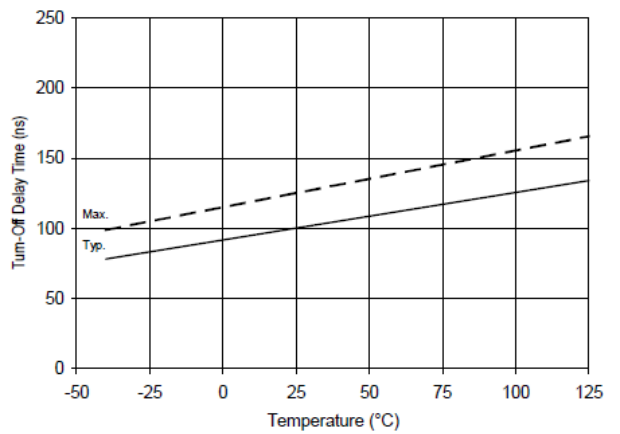


Figure 6A. Turn Off Time vs. Temperature

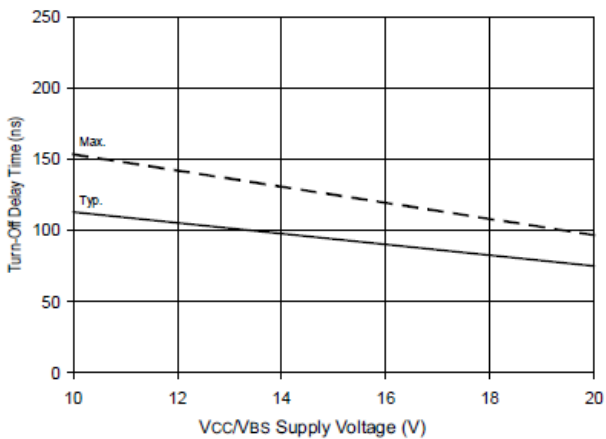


Figure 6B. Turn Off Time vs. V_{CC}/V_{BS} Supply Voltage

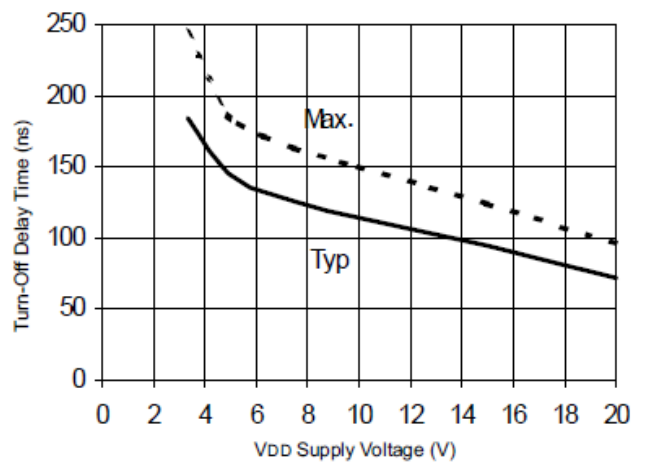


Figure 6C. Turn Off Time vs. V_{DD} Supply Voltage

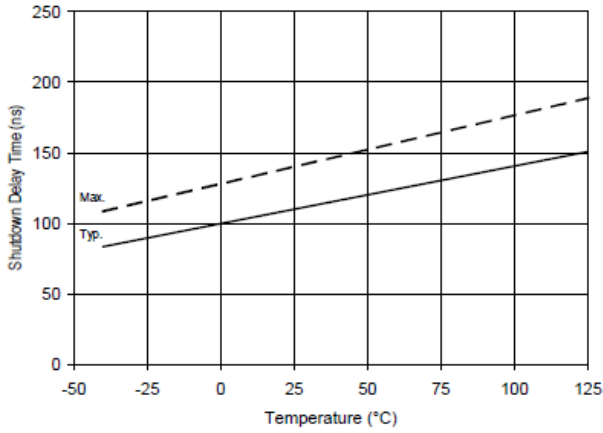


Figure 7A. Shutdown Time vs. Temperature

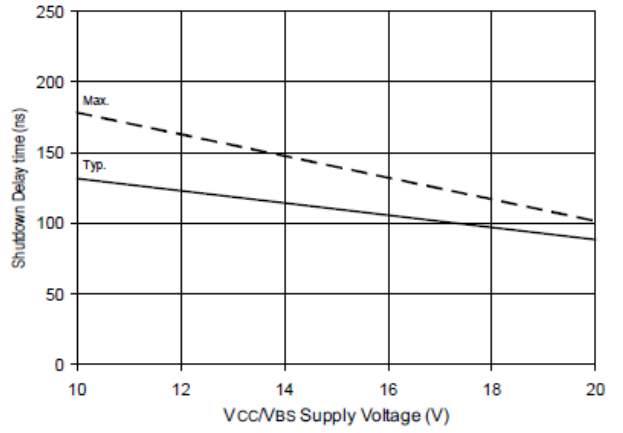


Figure 7B. Shutdown Time vs. V_{CC}/V_{BS} Supply Voltage

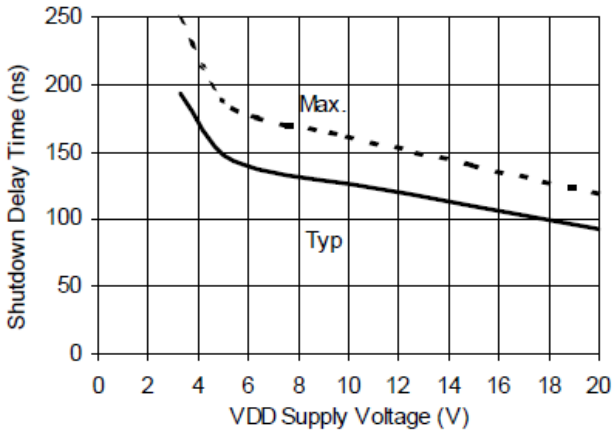


Figure 7C. Shutdown Time vs. V_{DD} Supply Voltage

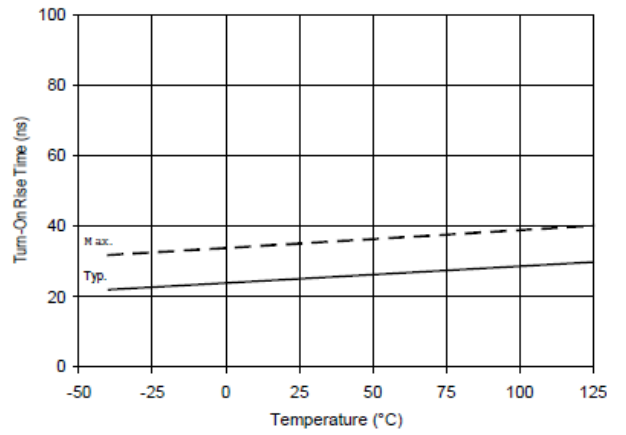


Figure 8A. Turn On Rise Time vs. Temperature

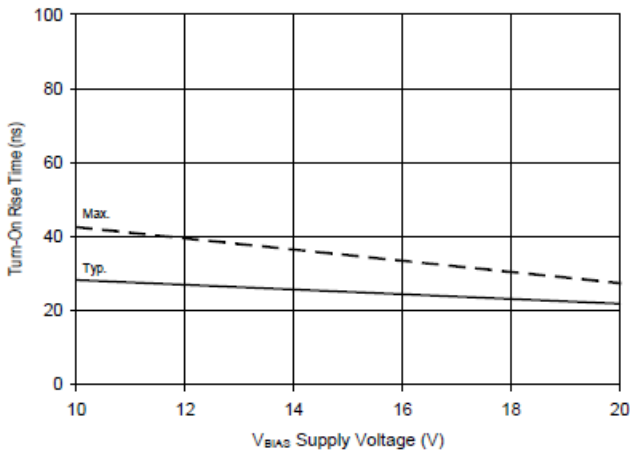


Figure 8B. Turn On Rise Time vs. Voltage

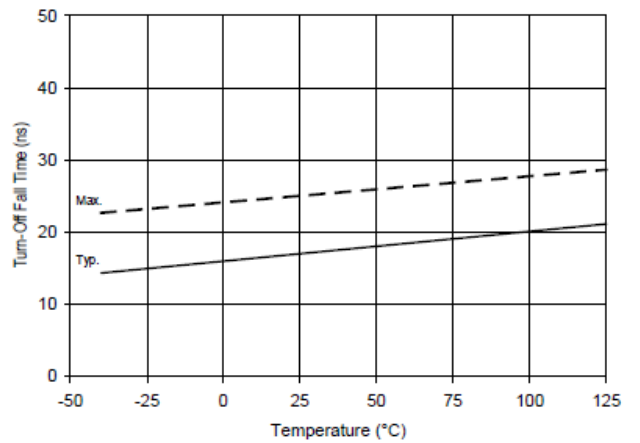


Figure 9A. Turn Off Fall Time vs. Temperature

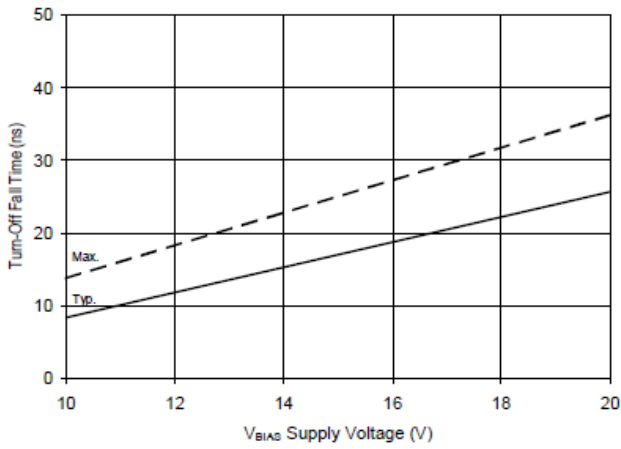


Figure 9B. Turn Off Fall Time vs. Voltage

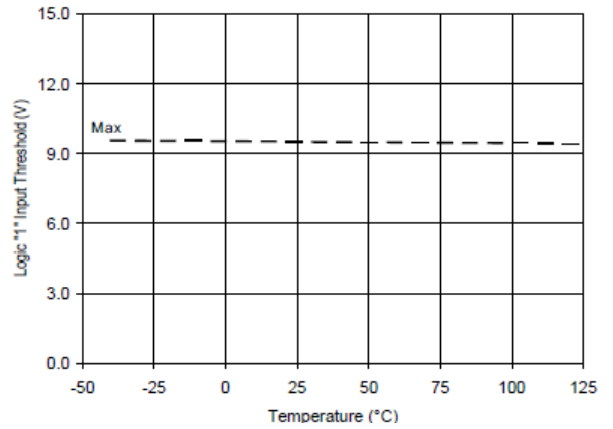


Figure 10A. Logic '1' Input Threshold vs. Temperature

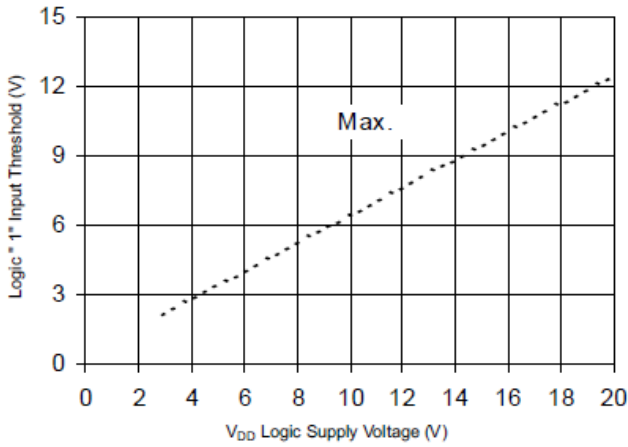


Figure 10B. Logic '1' Input Threshold vs. Voltage

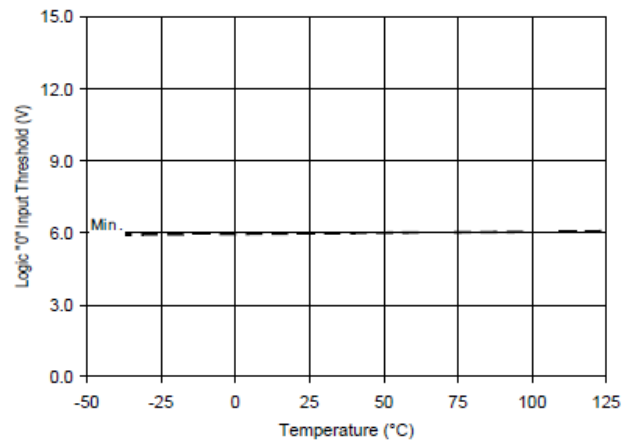


Figure 11A. Logic '0' Input Threshold vs. Temperature

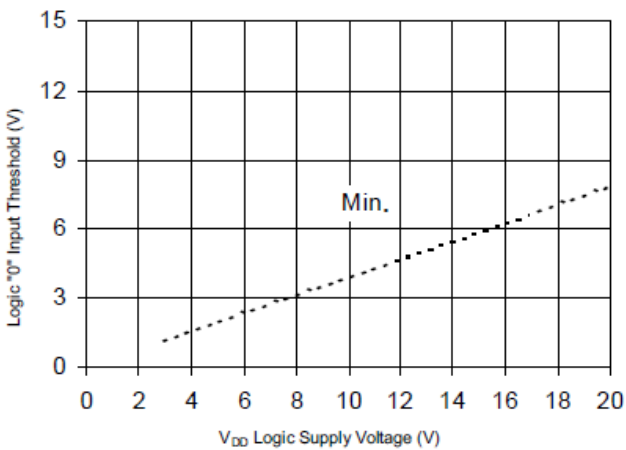


Figure 11B. Logic '0' Input Threshold vs. Voltage

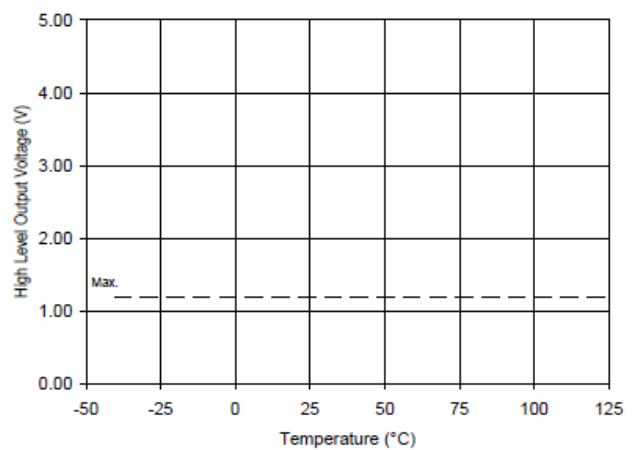


Figure 12A. High Level Output vs. Temperature

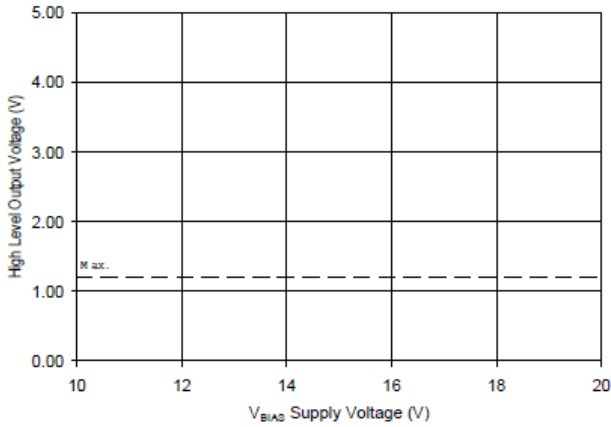


Figure 12B. High Level Output vs. Voltage

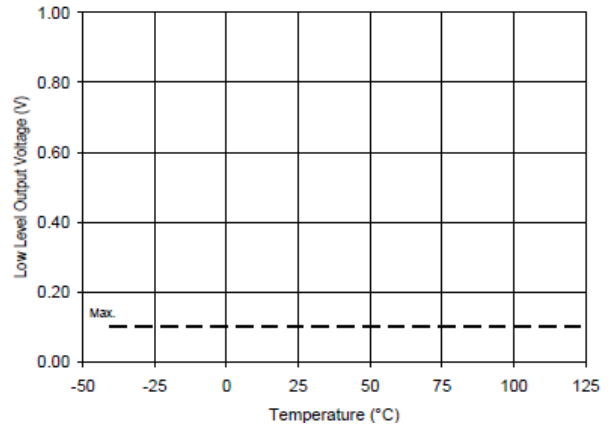


Figure 13A. Low Level Output vs. Temperature

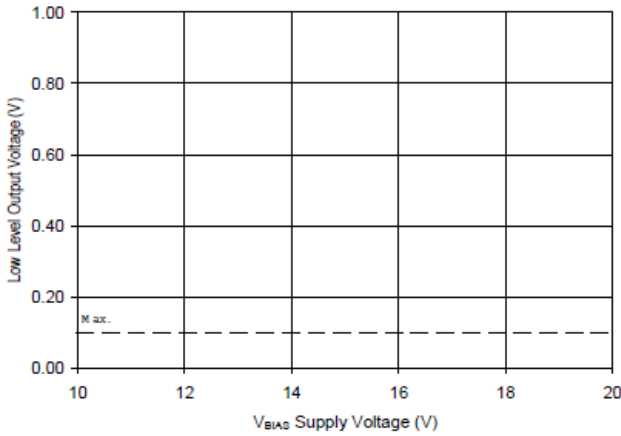


Figure 13B. Low Level Output vs. Voltage

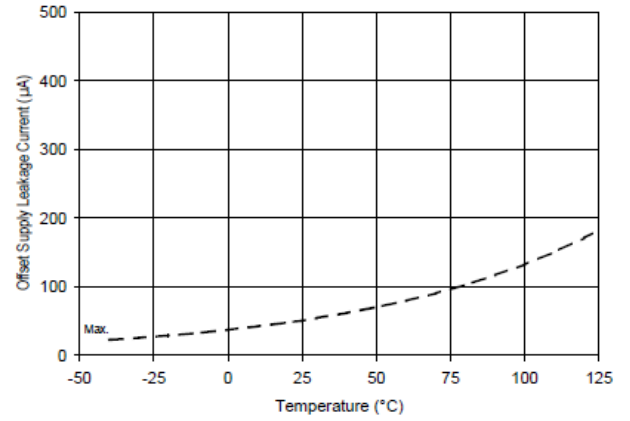


Figure 14A. Offset Supply Current vs. Temperature

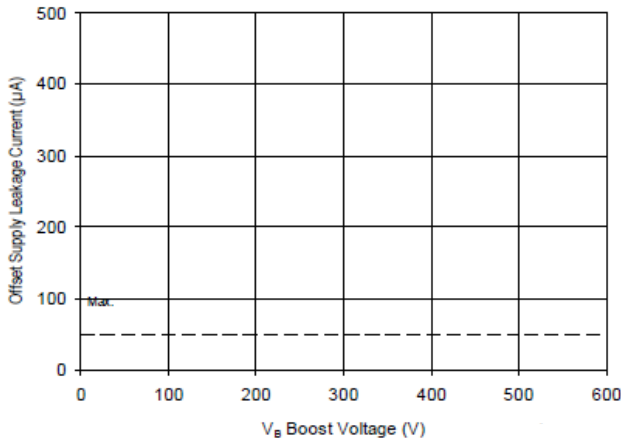


Figure 14B. Offset Supply Current vs. Voltage

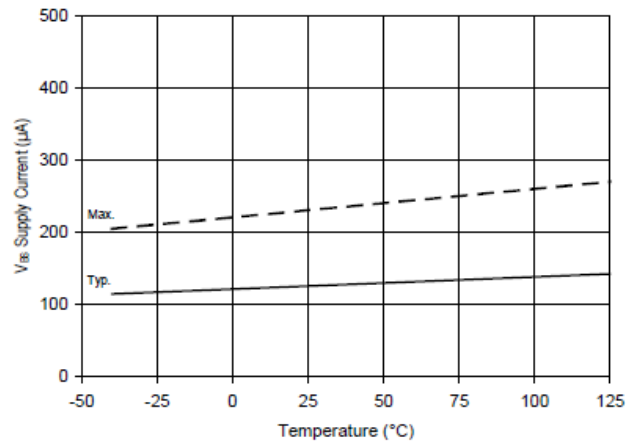


Figure 15A. V_{BS} Supply Current vs. Temperature

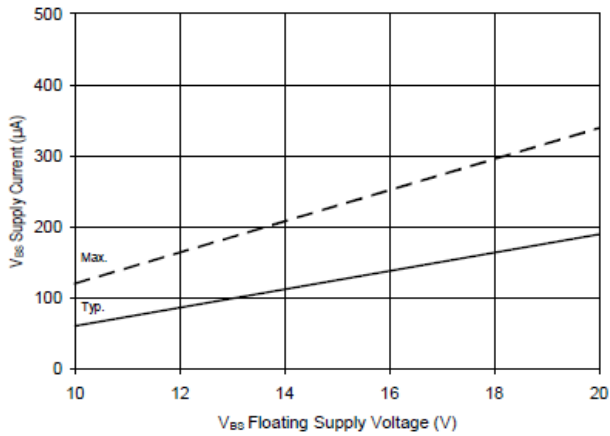


Figure 15B. V_{BS} Supply Current vs. Voltage

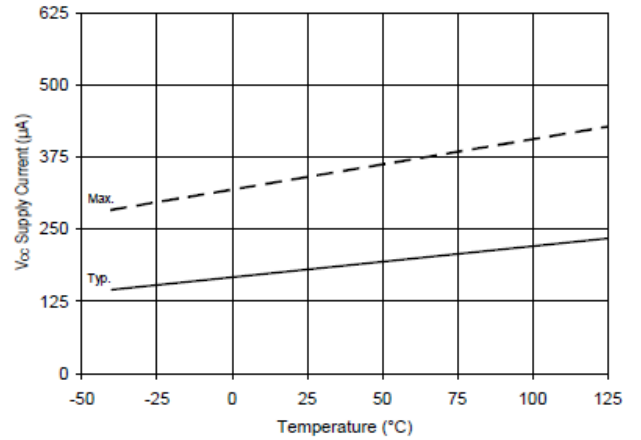


Figure 16A. V_{CC} Supply Current vs. Temperature

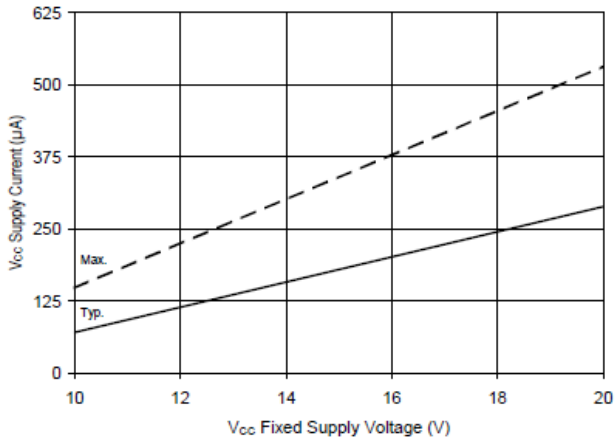


Figure 16B. V_{CC} Supply Current vs. Voltage

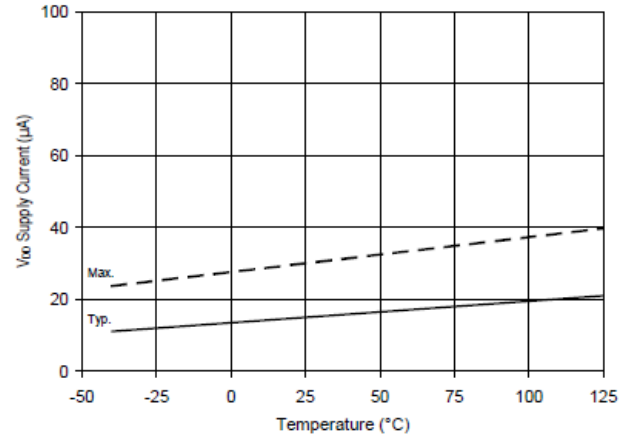


Figure 17A. V_{DD} Supply Current vs. Temperature

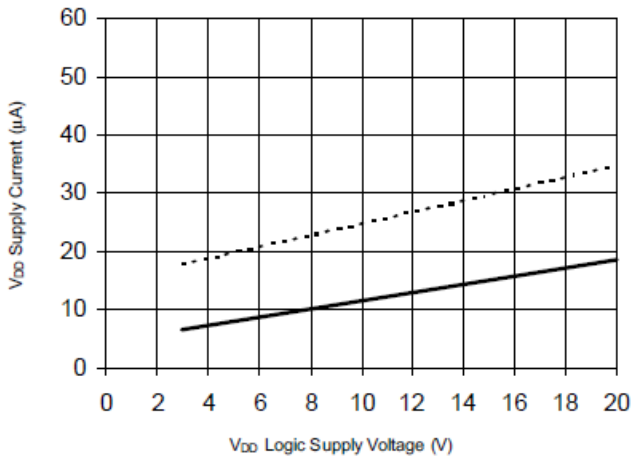


Figure 17B. V_{DD} Supply Current vs. V_{DD} Voltage

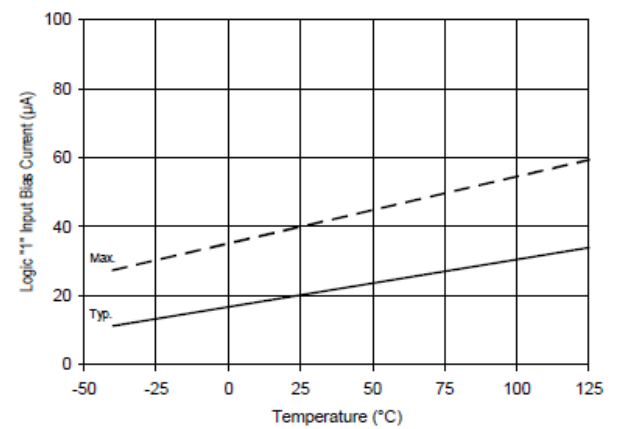


Figure 18A. Logic '1' Input Current vs. Temperature

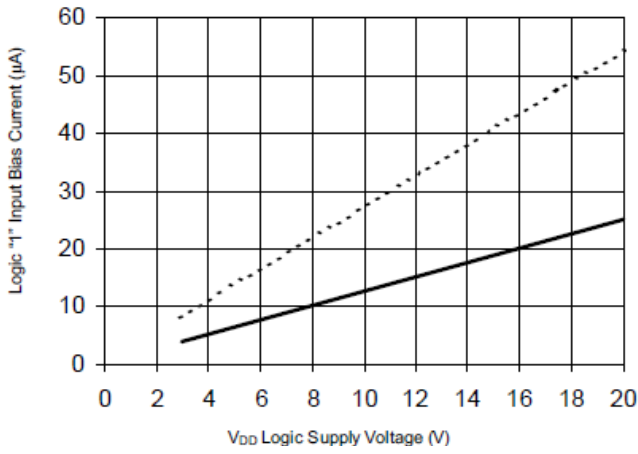


Figure 18B. Logic '1' Input Current vs. V_{DD} Voltage

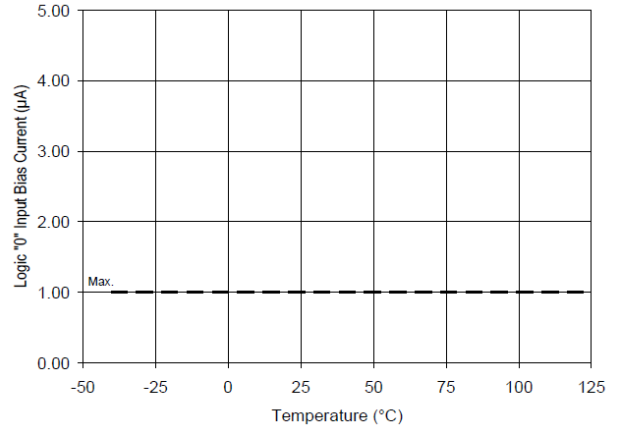


Figure 19A. Logic '0' Input Current vs. Temperature

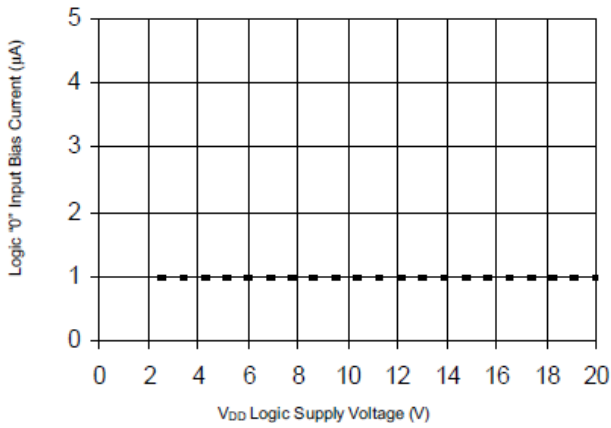


Figure 19B. Logic '0' Input Current vs. V_{DD} Voltage

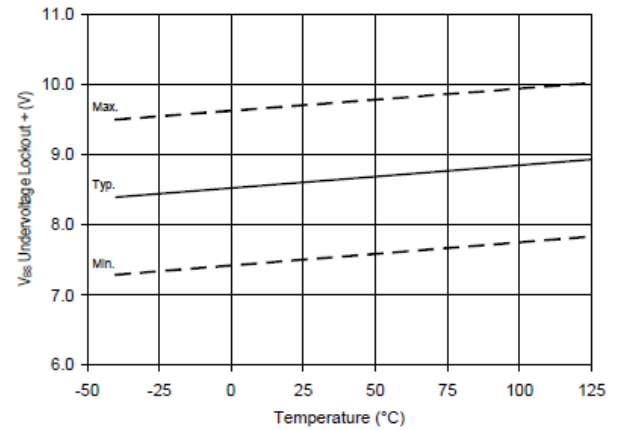


Figure 20. V_{BS} Undervoltage (+) vs. Temperature

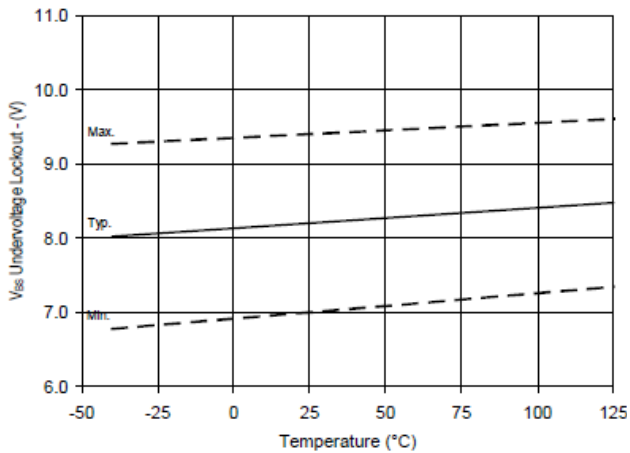


Figure 21 V_{BS} Undervoltage (-) vs. Temperature

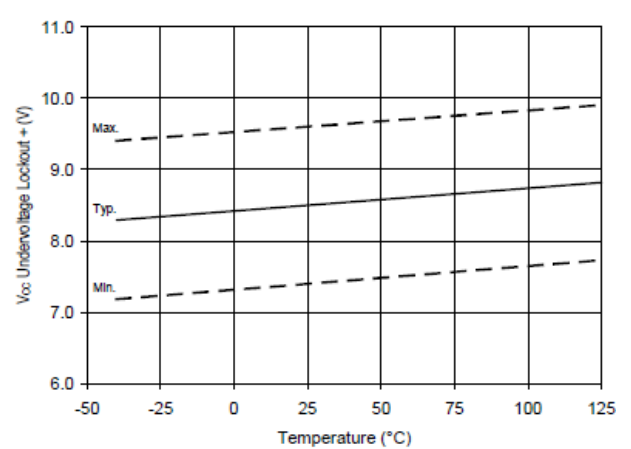


Figure 22. V_{CC} Undervoltage (+) vs. Temperature

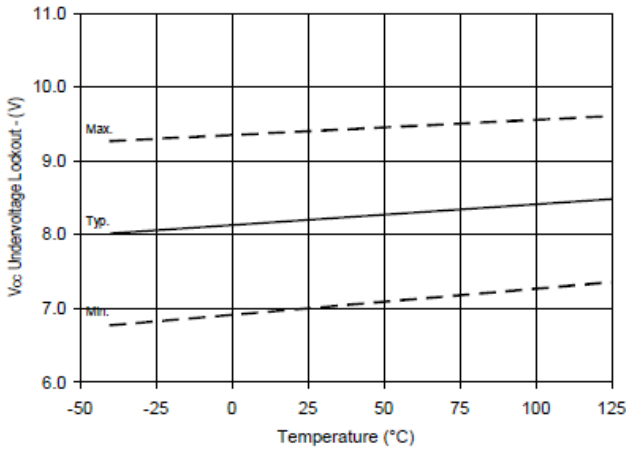


Figure 23. V_{CC} Undervoltage (-) vs. Temperature

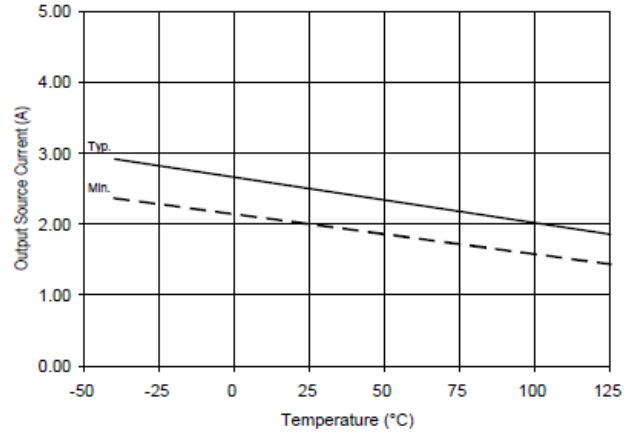


Figure 24A. Output Source Current vs. Temperature

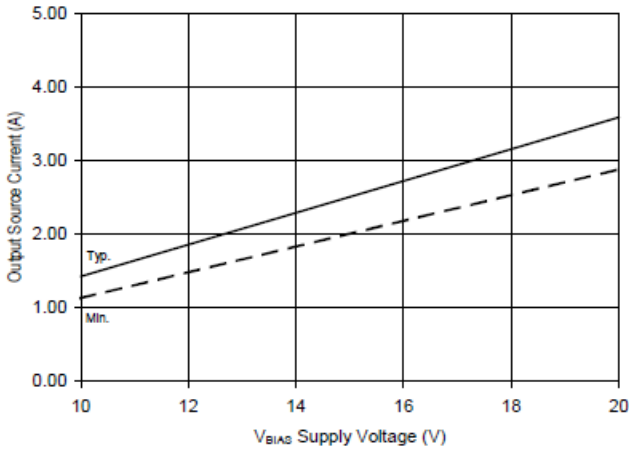


Figure 24B. Output Source Current vs. Voltage

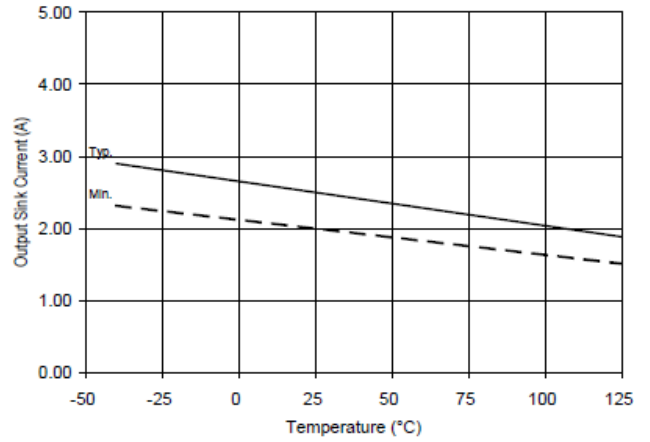


Figure 25A. Output Sink Current vs. Temperature

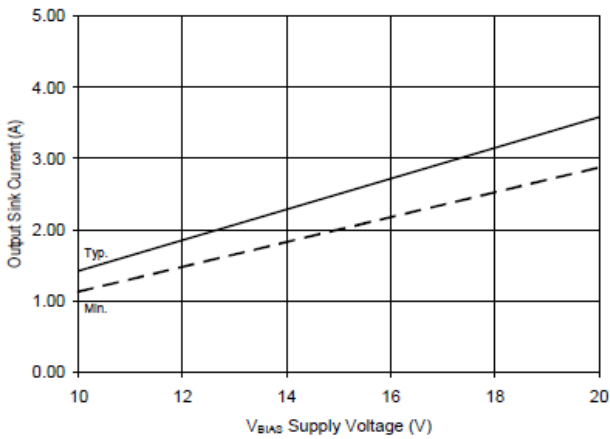


Figure 25B. Output Sink Current vs. Voltage

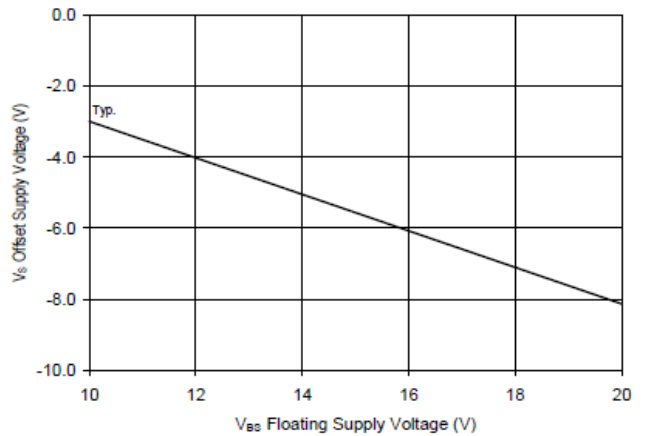


Figure 26. Maximum V_S Negative Offset vs. V_{BS} Supply Voltage

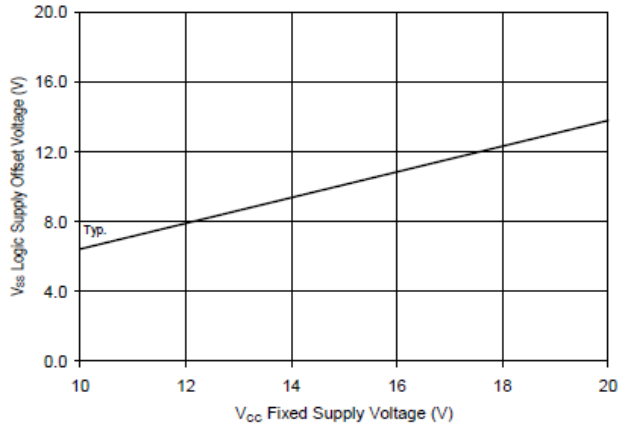
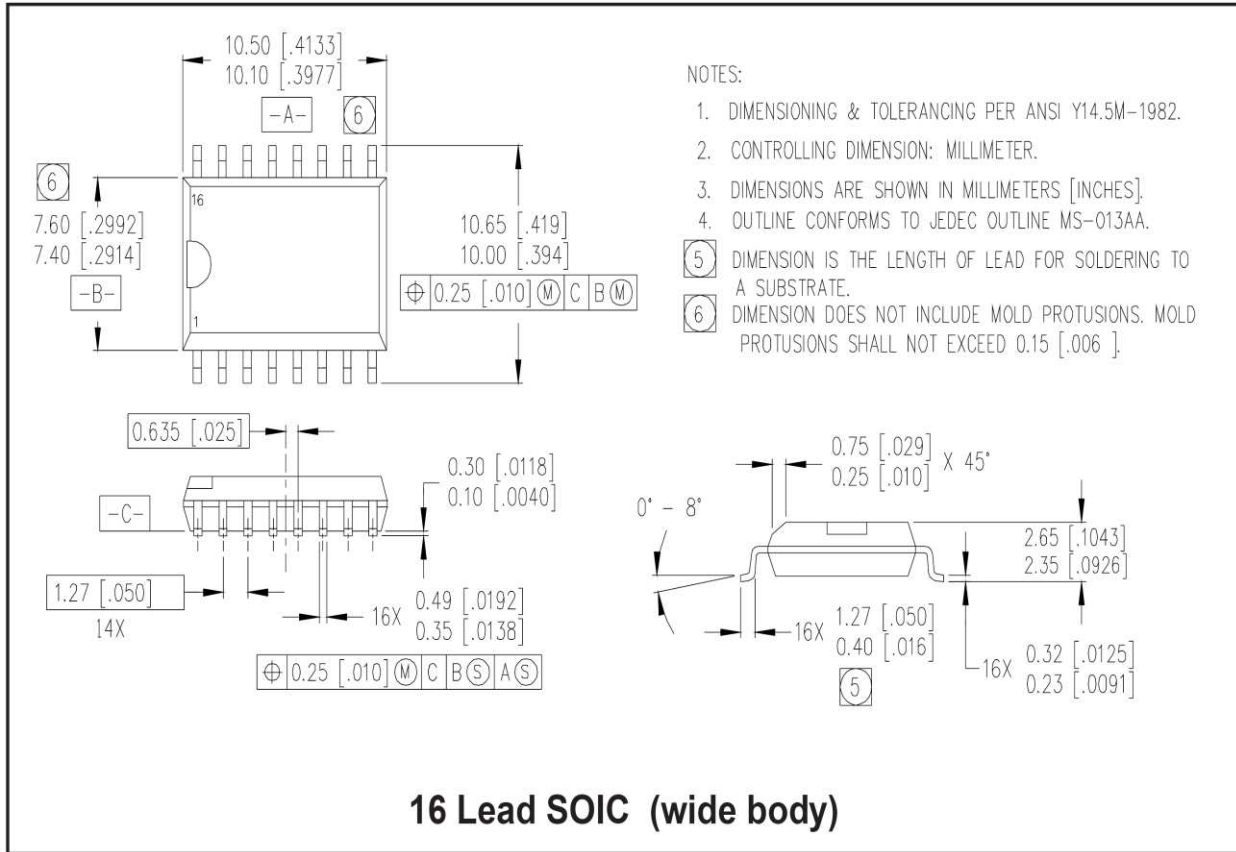
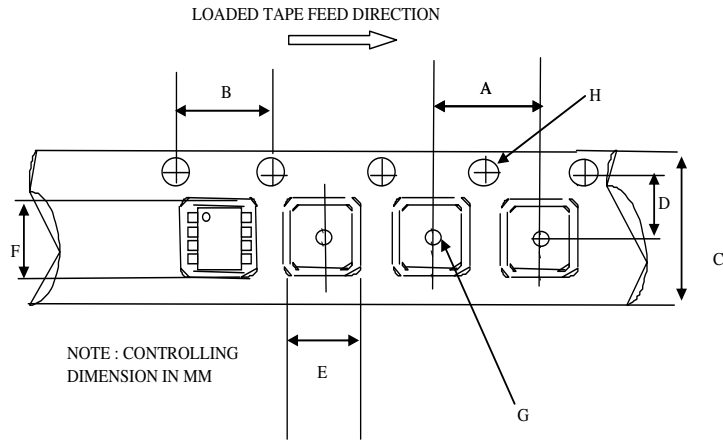


Figure 27. Maximum V_{SS} Positive Offset vs. V_{CC} Supply Voltage

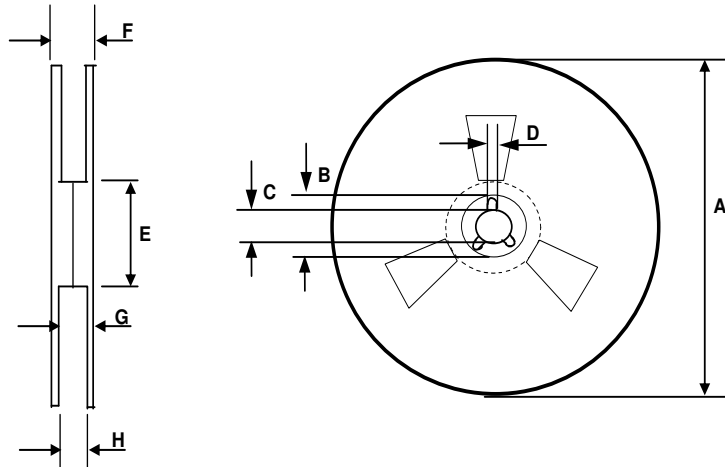
Package Details


Tape and Reel Details



CARRIER TAPE DIMENSION FOR 16SOICN

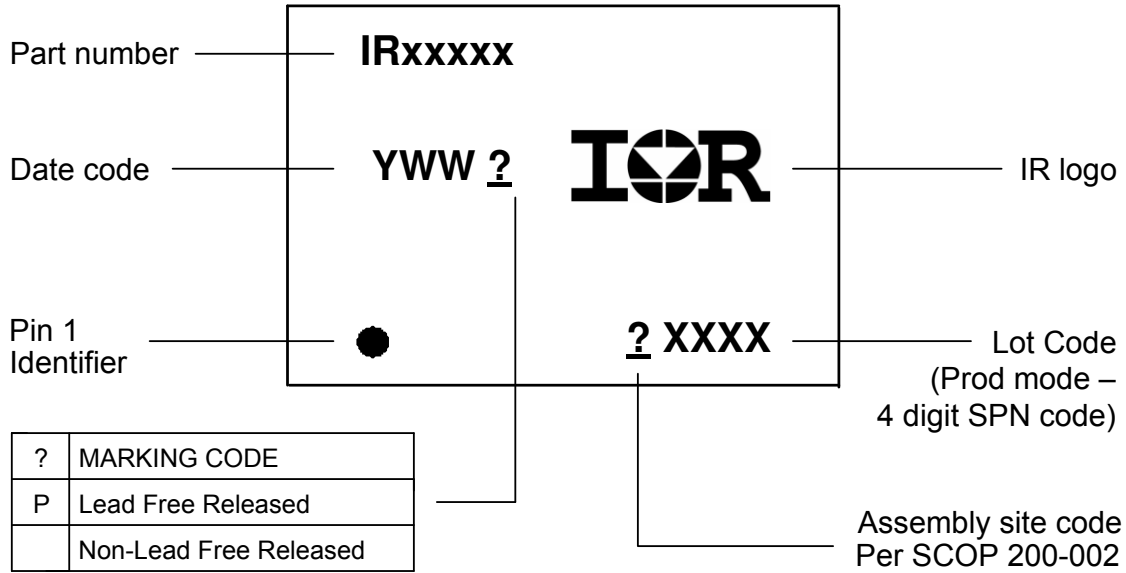
| Code | Metric | | Imperial | |
|------|--------|-------|----------|-------|
| | Min | Max | Min | Max |
| A | 7.90 | 8.10 | 0.311 | 0.318 |
| B | 3.90 | 4.10 | 0.153 | 0.161 |
| C | 15.70 | 16.30 | 0.618 | 0.641 |
| D | 7.40 | 7.60 | 0.291 | 0.299 |
| E | 6.40 | 6.60 | 0.252 | 0.260 |
| F | 10.20 | 10.40 | 0.402 | 0.409 |
| G | 1.50 | n/a | 0.059 | n/a |
| H | 1.50 | 1.60 | 0.059 | 0.062 |



REEL DIMENSIONS FOR 16SOICN

| Code | Metric | | Imperial | |
|------|--------|--------|----------|--------|
| | Min | Max | Min | Max |
| A | 329.60 | 330.25 | 12.976 | 13.001 |
| B | 20.95 | 21.45 | 0.824 | 0.844 |
| C | 12.80 | 13.20 | 0.503 | 0.519 |
| D | 1.95 | 2.45 | 0.767 | 0.096 |
| E | 98.00 | 102.00 | 3.858 | 4.015 |
| F | n/a | 22.40 | n/a | 0.881 |
| G | 18.50 | 21.10 | 0.728 | 0.830 |
| H | 16.40 | 18.40 | 0.645 | 0.724 |

Part Marking Information



Qualification Information[†]

| | |
|-----------------------------------|---|
| Qualification Level | Industrial ^{††} (per JEDEC JESD 47) |
| | Comments: This family of ICs has passed JEDEC's Industrial qualification. IR's Consumer qualification level is granted by extension of the higher Industrial level. |
| Moisture Sensitivity Level | MSL3 ^{†††} (per IPC/JEDEC J-STD-020) |
| RoHS Compliant | Yes |

- † Qualification standards can be found at International Rectifier's web site <http://www.irf.com/>
- †† Higher qualification ratings may be available should the user have such requirements. Please contact your International Rectifier sales representative for further information.
- ††† Higher MSL ratings may be available for the specific package types listed here. Please contact your International Rectifier sales representative for further information.

The information provided in this document is believed to be accurate and reliable. However, International Rectifier assumes no responsibility for the consequences of the use of this information. International Rectifier assumes no responsibility for any infringement of patents or of other rights of third parties which may result from the use of this information. No license is granted by implication or otherwise under any patent or patent rights of International Rectifier. The specifications mentioned in this document are subject to change without notice. This document supersedes and replaces all information previously supplied.

For technical support, please contact IR's Technical Assistance Center
<http://www.irf.com/technical-info/>

WORLD HEADQUARTERS:
 233 Kansas St., El Segundo, California 90245
 Tel: (310) 252-7105