



Chipsmall Limited consists of a professional team with an average of over 10 year of expertise in the distribution of electronic components. Based in Hongkong, we have already established firm and mutual-benefit business relationships with customers from,Europe,America and south Asia,supplying obsolete and hard-to-find components to meet their specific needs.

With the principle of “Quality Parts,Customers Priority,Honest Operation,and Considerate Service”,our business mainly focus on the distribution of electronic components. Line cards we deal with include Microchip,ALPS,ROHM,Xilinx,Pulse,ON,Everlight and Freescale. Main products comprise IC,Modules,Potentiometer,IC Socket,Relay,Connector.Our parts cover such applications as commercial,industrial, and automotives areas.

We are looking forward to setting up business relationship with you and hope to provide you with the best service and solution. Let us make a better world for our industry!



Contact us

Tel: +86-755-8981 8866 Fax: +86-755-8427 6832

Email & Skype: info@chipsmall.com Web: www.chipsmall.com

Address: A1208, Overseas Decoration Building, #122 Zhenhua RD., Futian, Shenzhen, China



IRC-110 Infrared Camera

Point-and-shoot thermal imaging technology for the professional

The Amprobe IRC-110 thermal camera, designed for the professional, is rugged with point-and-shoot functionality to give you a visual heat map image for quick and accurate identification of temperature related issues. Troubleshoot electrical connections, motors, HVAC and electrical, and insulation leaks around buildings to identify potential energy savings.



Features

- **Infrared heat map image blending** at 0%, 25%, 50%, 75%, and 100%
- **Three selectable color palettes** (grey scale, hot iron and rainbow)
- **Center-point temperature measurement** and focus free
- **IR measurement 20:1 Distance to Spot ratio**
- **Adjustable emissivity** from 0.10 to 1.00
- **Auto off function**
- **Selectable °F and °C**
- **Intuitive joystick navigation** to on-screen menu and settings
- **Hot and cold markers** instantly identifies hottest and coldest spots

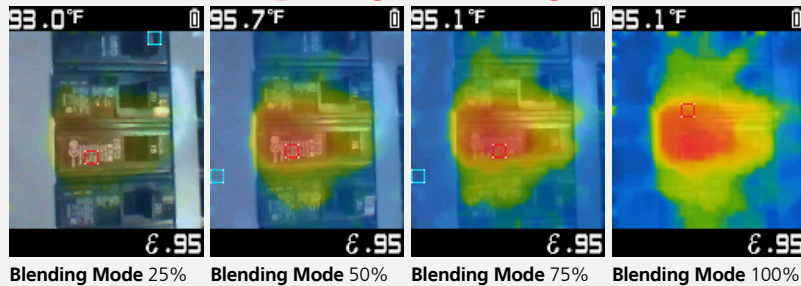


Safety Certification

All Amprobe tools, including the Amprobe IRC-110, are rigorously tested for safety, accuracy, reliability, and ruggedness in our state-of-the-art test lab. In addition, Amprobe products that measure electricity are listed by a 3rd party safety lab, either UL or CSA. This system assures that Amprobe products meet or exceed safety regulations and will perform in a tough, professional environment for many years to come.



Infrared heat map image blending



Applications

- **Electrical, HVAC, mechanical, and automotive**
- **Identify temperature related issues** for electrical connections and motors
- **Quickly verify HVAC functionality** and performance
- **Locate heat loss spots** on the insulation around buildings to save energy costs

Industries

- **Industrial Maintenance**
- **Commercial Facility Maintenance**
- **Oil & Gas Maintenance**
- **Reliability Inspections**
- **Building Diagnostics**
- **Electrical, Water & Gas Utilities**
- **Research & Development**

Specifications

| Features | IRC-110 |
|--|--|
| Built-in digital camera | • |
| Infrared heat map overlay | Five blending modes: 0%, 25%, 50%, 75%, 100% |
| Color palettes | Grey Scale, Hot Iron, Rainbow |
| Field of view | 33 ° x 33 ° |
| Focus system | Focus free |
| IR temperature range | 14 °F to 932 °F (-10 °C to 500 °C) |
| Distance to Spot ratio (D:S) | 20:1 |
| Emissivity | 0.10 to 1.00 |
| Display resolution | 0.2 °F/0.1 °C |
| Hot and cold markers | • |
| Center point marker | • |
| Temperature units | Selectable °F/°C |
| Auto power off | • |
| Detailed Specifications | |
| Temperature measurement | Yes, center point |
| Temperature range | 14 °F to 932 °F (-10 °C to 500 °C) |
| IR accuracy (calibration geometry with ambient temperature 23°C ± 2°C) | ≥ 32 °F (≥ 0 °C): ± 4 °F (± 2 °C) or ± 2 % of the reading, whichever is greater < 32 °F (< 0 °C): ± 6 °F (± 3 °C) |
| Display resolution | 0.2 °F / 0.1 °C |
| IR Repeatability | ± 8 % of the reading or ± 2 °F (± 1 °C), whichever is greater |
| Temperature Coefficient | 0.1 °C/°C or ± 0.1 %/°C of the reading, whichever is greater |
| Distance to spot | 20:1 |
| Minimum spot size | 0.32 inches (8 mm) |
| Response time (95 %) | < 125 ms |
| Spectral response | 8 μm to 14 μm |
| Emissivity | Digitally adjustable from 0.10 to 1.00 by 0.01 |
| Visual image with infrared heat map overlay | Five blending modes (0%, 25%, 50%, 75% and 100%) |
| Visual to IR effective image alignment | ≥ 10 inches |
| Visual image resolution | 16,384 pixels (128 x 128 pixels) |
| Screen resolution | 20,480 pixels (128 x 160) |
| Field of view | 33 ° x 33 ° |
| Thermal sensitivity | 150 mK |
| Focus system | Focus free |
| Image palettes | Grey Scale (white hot), Hot Iron and Rainbow |
| Hot and cold marker | Yes |
| Display | 1.77 in color TFT with 128 x 160 pixels |
| Operating temperature and humidity | 32 °F to 122 °F (0 °C to 50 °C) 10 % to 90 % RH non-condensing at 86 °F (30 °C) |
| Storage temperature | -4 °F to 140 °F (-20 °C to 60 °C) without battery |
| Operating and storage altitude | < 6561 ft (< 2000 m) |
| Drop proof | 4-feet (1.2 m) |
| Vibration and shock | IEC 60068-2-6, 2.5g, 10 to 200 Hz, IEC 60068-2-27, 50g 11ms |
| Power supply | Three (3) 1.5 V AA IEC LR6 alkaline batteries |
| Battery life | 8 hours with display ON (Typical) Power consumption: 150 mA (Typical) |
| Auto power off | Selectable modes: OFF, 1 minute, 2 minutes, 5 minutes and 10 minutes |
| Certifications | CE, IEC, RoHS |
| Electromagnetic Compatibility | EN 61326-1 Korea (KCC): Class A Equipment (Industrial Broadcasting & Communication Equipment) [1] [1] This product meets requirements for industrial (Class A) electromagnetic wave equipment and the seller or user should take notice of it. This equipment is intended for use in business environments and is not to be used in homes. |
| Size (H x W x L) | Approx. 7.3 x 2.1 x 4.1 in (185 x 54 x 104 mm) |
| Weight | Approx. 0.57 lb (0.26 kg) |

Included: 3 x 1.5 V AA Batteries (not installed), Wrist Strap and User Manual