



Chipsmall Limited consists of a professional team with an average of over 10 year of expertise in the distribution of electronic components. Based in Hongkong, we have already established firm and mutual-benefit business relationships with customers from,Europe,America and south Asia,supplying obsolete and hard-to-find components to meet their specific needs.

With the principle of “Quality Parts,Customers Priority,Honest Operation,and Considerate Service”,our business mainly focus on the distribution of electronic components. Line cards we deal with include Microchip,ALPS,ROHM,Xilinx,Pulse,ON,Everlight and Freescale. Main products comprise IC,Modules,Potentiometer,IC Socket,Relay,Connector.Our parts cover such applications as commercial,industrial, and automotives areas.

We are looking forward to setting up business relationship with you and hope to provide you with the best service and solution. Let us make a better world for our industry!



Contact us

Tel: +86-755-8981 8866 Fax: +86-755-8427 6832

Email & Skype: info@chipsmall.com Web: www.chipsmall.com

Address: A1208, Overseas Decoration Building, #122 Zhenhua RD., Futian, Shenzhen, China



1 Watt

- Dual Output
- SMD Package
- Industry Standard Pinout
- Operating Temperature -40 °C to +105 °C
- 1500 VDC Isolation, 3000 VDC Option
- 3 Year Warranty



Dimensions:

ISA:
0.600 x 0.440 x 0.285" (15.24 x 11.20 x 7.25 mm)

Models & Ratings

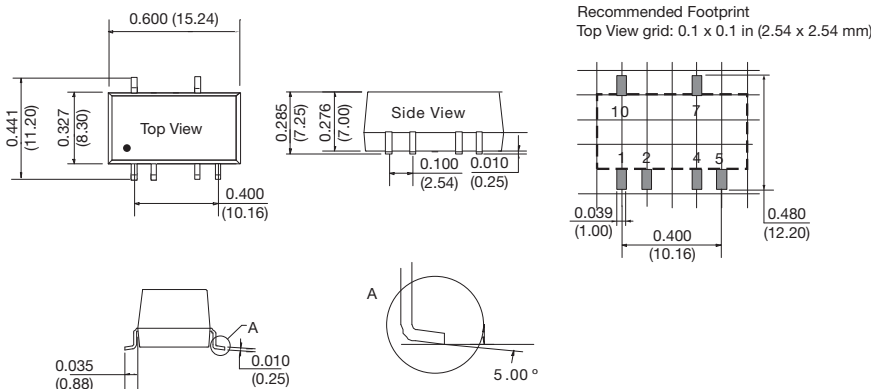
Input Voltage	Output Voltage	Output Current	Input Current ⁽²⁾		Maximum Capacitive Load	Efficiency ⁽³⁾	Model Number
			No Load	Full Load			
2.97-3.63 V	±5 V	±100 mA	25 mA	389 mA	100 µF	78%	ISA0305 ⁽¹⁾
	±12 V	±42 mA	25 mA	389 mA	100 µF	78%	ISA0312 ⁽¹⁾
	±15 V	±33 mA	25 mA	389 mA	100 µF	78%	ISA0315
4.5-5.5 V	±5 V	±100 mA	20 mA	250 mA	100 µF	80%	ISA0505 ⁽¹⁾
	±9 V	±56 mA	20 mA	250 mA	100 µF	80%	ISA0509 ⁽¹⁾
	±12 V	±42 mA	20 mA	247 mA	100 µF	81%	ISA0512 ⁽¹⁾
	±15 V	±33 mA	20 mA	247 mA	100 µF	81%	ISA0515 ⁽¹⁾
	±24 V	±21 mA	20 mA	247 mA	100 µF	81%	ISA0524 ⁽¹⁾
10.8-13.2 V	±5 V	±100 mA	15 mA	104 mA	100 µF	80%	ISA1205 ⁽¹⁾
	±9 V	±56 mA	15 mA	104 mA	100 µF	80%	ISA1209 ⁽¹⁾
	±12 V	±42 mA	15 mA	103 mA	100 µF	81%	ISA1212 ⁽¹⁾
	±15 V	±33 mA	15 mA	103 mA	100 µF	81%	ISA1215 ⁽¹⁾
	±24 V	±21 mA	15 mA	103 mA	100 µF	81%	ISA1224 ⁽¹⁾
13.5-16.5 V	±15 V	±33 mA	12 mA	83 mA	100 µF	81%	ISA1515 ⁽¹⁾
21.6-26.4 V	±5 V	±100 mA	10 mA	52 mA	100 µF	80%	ISA2405 ⁽¹⁾
	±9 V	±56 mA	10 mA	52 mA	100 µF	80%	ISA2409 ⁽¹⁾
	±12 V	±42 mA	10 mA	51 mA	100 µF	81%	ISA2412 ⁽¹⁾
	±15 V	±33 mA	10 mA	51 mA	100 µF	82%	ISA2415 ⁽¹⁾
	±24 V	±21 mA	10 mA	51 mA	100 µF	82%	ISA2424 ⁽¹⁾

Notes

1. For optional 3000 VDC isolation add suffix '-H' to end of part number e.g. ISA1224-H.

2. Input currents measured at nominal input voltage.
3. Typical value at full load.

Mechanical Details



PIN CONNECTIONS	
Pin	Function
1	GND
2	+Vin
4	0 V
5	-Vout
7	+Vout
10	No Connection

Notes

1. All dimensions are in inches (mm)
2. Weight: 0.004 lbs (1.8 g) typical.
3. Pin diameter: 0.02 ±0.002 (0.5 ±0.005)
4. Pin pitch and length tolerance: ±0.014 (±0.35)
5. Case tolerance: ±0.02 (±0.5)

Input

Characteristic	Minimum	Typical	Maximum	Units	Notes & Conditions
Input Voltage Range	2.97		3.63	VDC	3.3 V nominal
	4.50		5.50	VDC	5 V nominal
	10.80		13.20	VDC	12 V nominal
	13.50		16.50	VDC	15 V nominal
	21.60		26.40	VDC	24 V nominal
Input Current					See Models and Ratings table
Input Reflected Ripple		15		mA pk-pk	Through 12 μ H inductor and 47 μ F capacitor
Input Surge			5	VDC for 15 ms	3.3 V models
			9	VDC for 15 ms	5 V models
			18	VDC for 15 ms	12 V models
			21	VDC for 15 ms	15 V models
			30	VDC for 15 ms	24 V models
Input Filter	Capacitor				

Output

Characteristic	Minimum	Typical	Maximum	Units	Notes & Conditions
Output Voltage	± 5		± 24	VDC	See Models and Ratings table
Output Voltage Balance			± 2	%	Dual output models
Initial Set Accuracy			± 3.0	%	At 100% load
Minimum Load	10			%	
Line Regulation			± 1.2	%	
Load Regulation				%	See graph
Cross Regulation			± 5.0	%	Dual output models when one load is varied between 25% and 100% and the other is fixed at 100% load
Start Up Delay		2		ms	
Ripple and Noise			60	mV pk-pk	20 MHz bandwidth, measured using 0.1 μ F capacitor
Transient Response			3	% deviation	Recovery to within 1% in 500 μ s for a 25% load change (5% max. deviation for 3.3 & 5 V models)
Short Circuit Protection					Continuous, with auto recovery, except 1 s max for 24 input V models
Maximum Capacitive Load					
Temperature Coefficient			0.02	%/°C	

General

Characteristic	Minimum	Typical	Maximum	Units	Notes & Conditions
Efficiency					See Models and Ratings table
Isolation: Input to Output	1500			VDC	For optional high isolation versions, 3000 VDC input to output add suffix -H to model number
Switching Frequency	50		300	kHz	
Isolation Resistance	10 ⁹			Ω	Input to output, tested at 500 VDC
Isolation Capacitance		20		pF	Input to output
Power Density			13	Win ³	
Mean Time Between Failure	3500			kHrs	MIL-HDBK-217F, +25 °C GB
Weight		0.004 (1.8)		lb (g)	

Environmental

Characteristic	Minimum	Typical	Maximum	Units	Notes & Conditions
Operating Temperature	-40		+105	°C	Derate from 100% load at +100 °C to 80% load at 105 °C
Storage Temperature	-55		+125	°C	
Case Temperature			+105	°C	
Operating Humidity			95	% RH	Non-condensing
Cooling					Natural convection

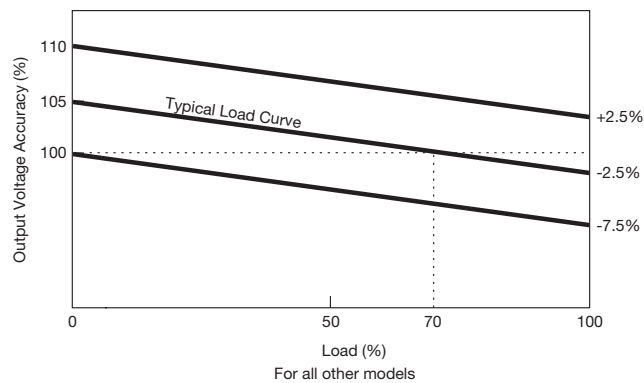
EMC: Emissions

Phenomenon	Standard	Test Level	Notes & Conditions
Conducted	EN55022	Class B	See Application Note for Class B filter
Radiated	EN55022	Class B	See Application Note for Class B filter

EMC: Immunity

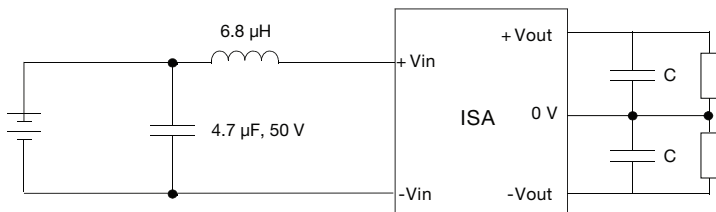
Phenomenon	Standard	Test Level	Criteria	Notes & Conditions
ESD Immunity	EN61000-4-2	3	B	
Radiated Immunity	EN61000-4-3	3 V/m	A	
EFT/Burst	EN61000-4-4	2	B	External input capacitor required, 330 μ F/100 V
Surge	EN61000-4-5	2	B	External input capacitor required, 330 μ F/100 V
Conducted Immunity	EN61000-4-6	3 V rms	A	
Magnetic Fields	EN61000-4-8	1 A/m	A	

Load Regulation



Application Note

EMI Filter for Class B Emissions



Output Voltage	C1
± 5	4.70 μ F
± 9	2.20 μ F
± 12	1.00 μ F
± 15	1.00 μ F
± 24	0.47 μ F