



Chipsmall Limited consists of a professional team with an average of over 10 year of expertise in the distribution of electronic components. Based in Hongkong, we have already established firm and mutual-benefit business relationships with customers from,Europe,America and south Asia,supplying obsolete and hard-to-find components to meet their specific needs.

With the principle of “Quality Parts,Customers Priority,Honest Operation,and Considerate Service”,our business mainly focus on the distribution of electronic components. Line cards we deal with include Microchip,ALPS,ROHM,Xilinx,Pulse,ON,Everlight and Freescale. Main products comprise IC,Modules,Potentiometer,IC Socket,Relay,Connector.Our parts cover such applications as commercial,industrial, and automotives areas.

We are looking forward to setting up business relationship with you and hope to provide you with the best service and solution. Let us make a better world for our industry!



## Contact us

Tel: +86-755-8981 8866 Fax: +86-755-8427 6832

Email & Skype: info@chipsmall.com Web: www.chipsmall.com

Address: A1208, Overseas Decoration Building, #122 Zhenhua RD., Futian, Shenzhen, China





# ISD-DEMO15D00 User Manual

Version 0.1



## Contents

Overview .....	3
Introduction .....	5
Board Configuration.....	7
Operations under VPE.....	10
Standalone Operation.....	11
Board Schematic .....	12



## Overview

This manual is for ISD-DEMO15D00 Rev\_A.



Figure 1 – Top view of ISD-DEMO15D00 Rev-A board

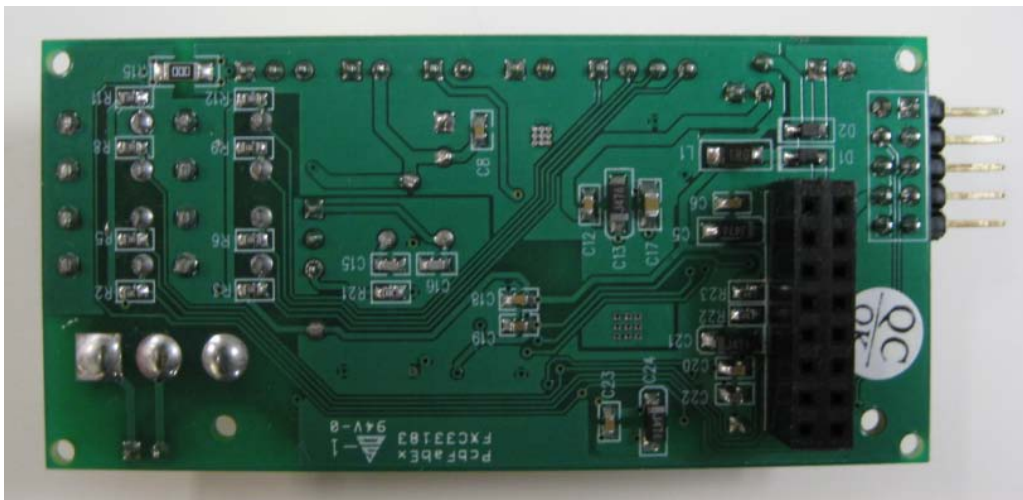


Figure 2 – Bottom view of ISD-DEMO15D00 Rev-A board



Figure 3 – ISD\_DEMO15D00 connected with ISD-ES\_MINI\_USB (dongle) board

## Introduction

ISD\_DEMO15D00 is to be used with ISD-ES\_MINI\_USB dongle. The complete evaluation kit for ISD-DEMO15D00 consists of the following:

- Hardware
  - o ISD-DEMO15D00 board
  - o ISD-ES\_USB\_MINI board
- Software
  - o ISD-VPE15D00 can be downloaded from website: <http://www.nuvoton-usa.com/ISD15D00/vpe>

User needs to fill out and submit the form on the website to request the username and password. Unfortunately, this registration process is not fully automatic yet when this manual is created. Instead, Nuvoton staff will generate the username and password based on the information received, and send them to user via email.

## System Requirements

- PC running Windows Vista, XP, NT, or 2000.
- Support for Windows 7 will be available soon.

**Figure 4** below shows a complete evaluation environment for ISD15D00 series devices. The ISD USB dongle provides the communication link between ISD-DEMO15D00 board and host PC. All the operations are initiated from VPE, a GUI application which runs on Windows PC.

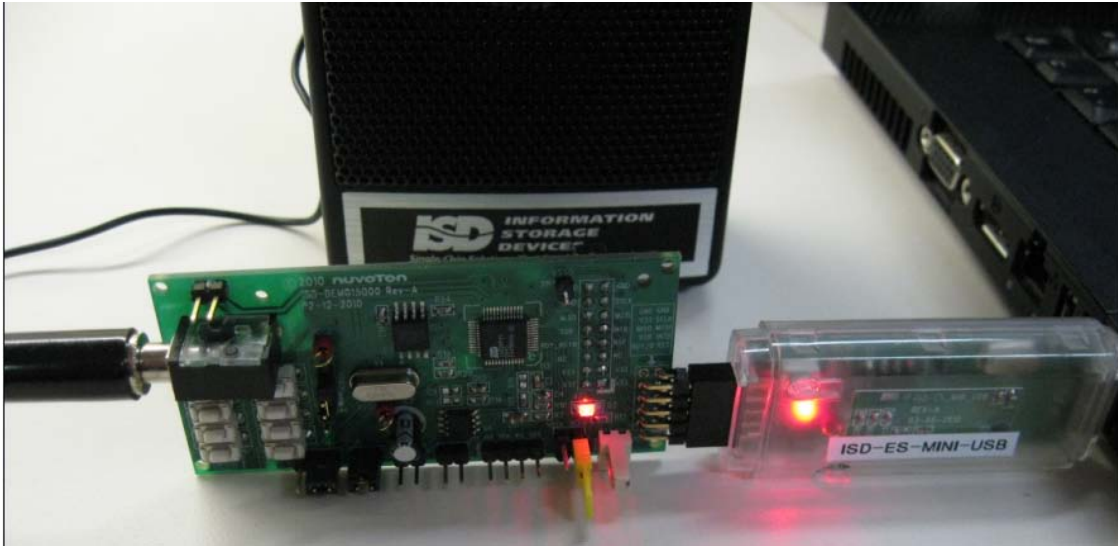
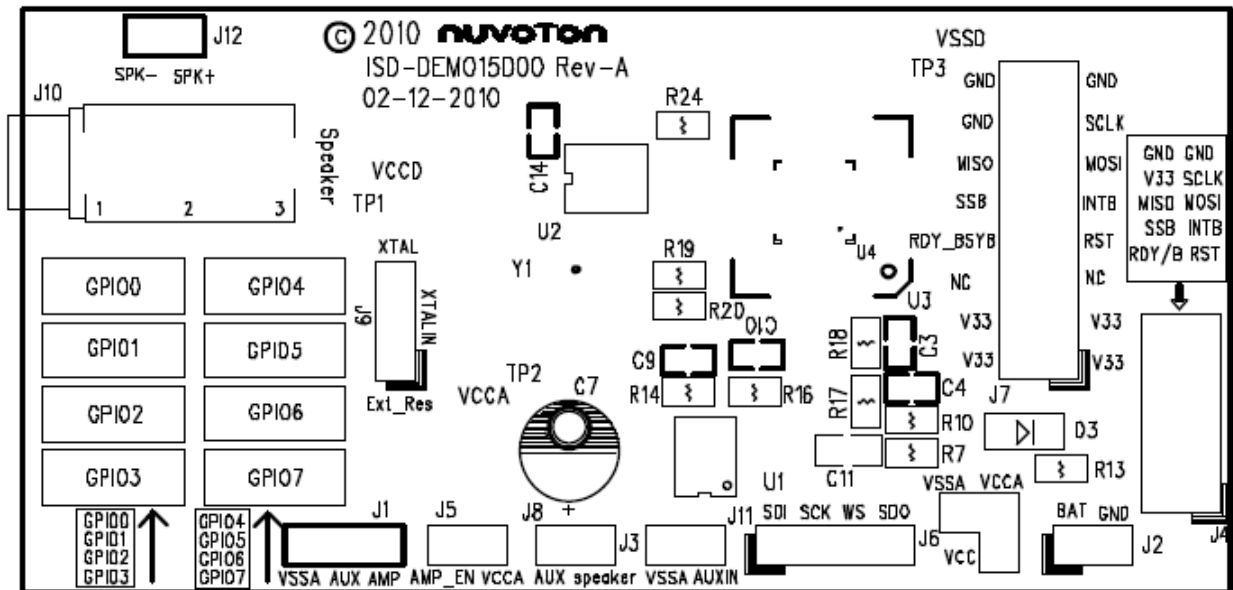


Figure 4 – A complete evaluation environment for ISD15D00 device

## Board Configuration

### Board Layout



### Jumper settings

#### J1: Aux Output

- Installing jumper at right position will connect AUX and AMP → feed AUX output from ISD15D00 to onboard audio amplifier ISD8101
- User should not install jumper at left position, which will connect AUX and VSSA together. The Left two pins of J1 are for the purpose of further evaluation. User can use these two pins as input to feed his/her own amplifier.

#### J2: Battery power connector.

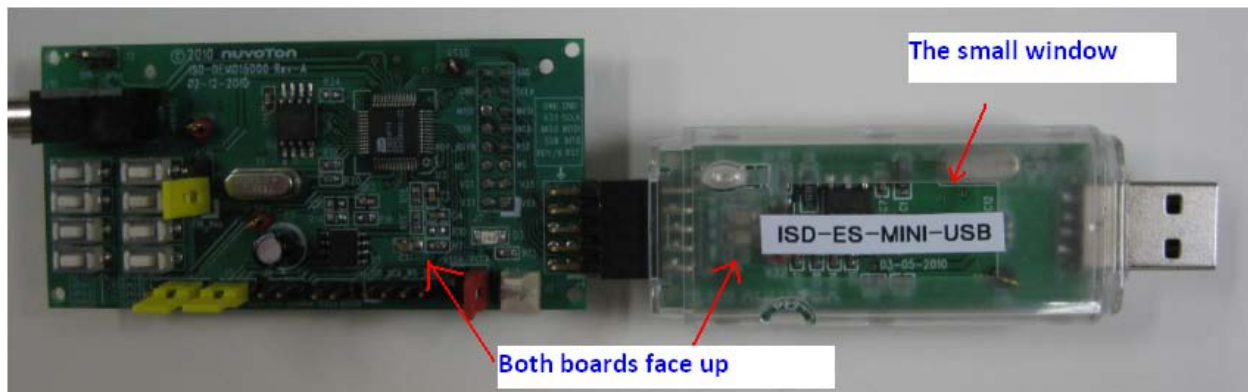




J3: AUXIN vs. VSSA → user can use J3 to feed AUXIN input to ISD15D00 from here.

J4: 2x5 header for connecting ISD-ES\_MINI\_USB dongle. Please note: two boards must connect each other with both top side up. For USB dongle board, it has a small window at its top side.

Please note: It could cause hardware damage if the two boards are not connected correctly.



**Figure 5 – connect ISD15D00 demo board with the USB dongle.**

J5: Install Jumper at J5 will connect AMP\_EN with VCCA, thus enable the on board audio amplifier ISD8101. To disable ISD8101, remove the J5 jumper.

J6: J6 is the place for user to select ISD15D00 VCCA. Installing a jumper vertically will make the VCCA equal VCC. If user wants to hear higher volume, and since VCCA can be higher than VCC, user can use the two horizontal pins of J6 to connect his/her own VCCA power supply. So, user should not install a jumper horizontally (although there is no harm doing so).

J7: 2x8 connection header for connecting with ISD-ES15D00\_USB board or ISD-ES15100\_USB mother board.

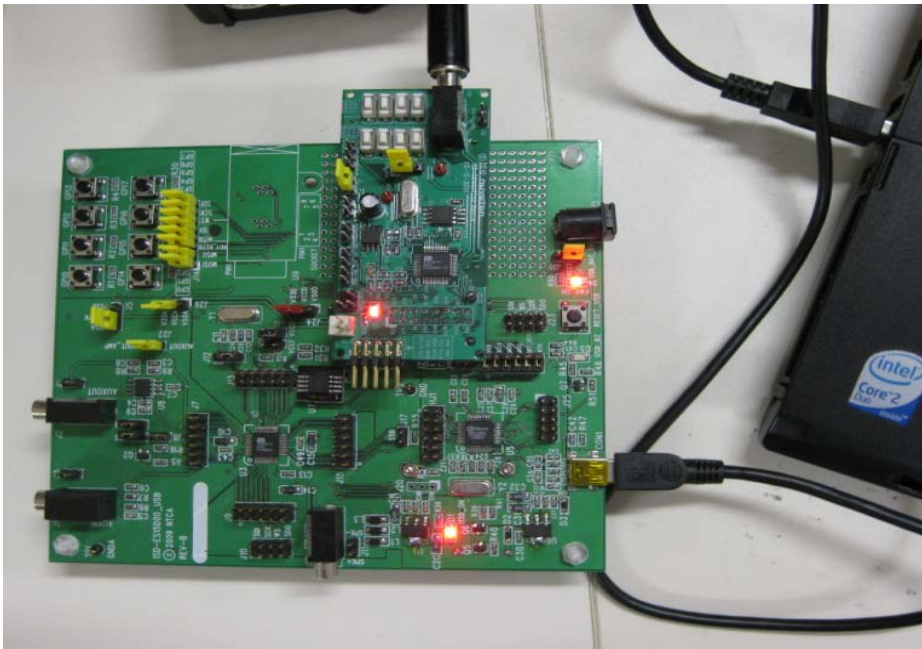


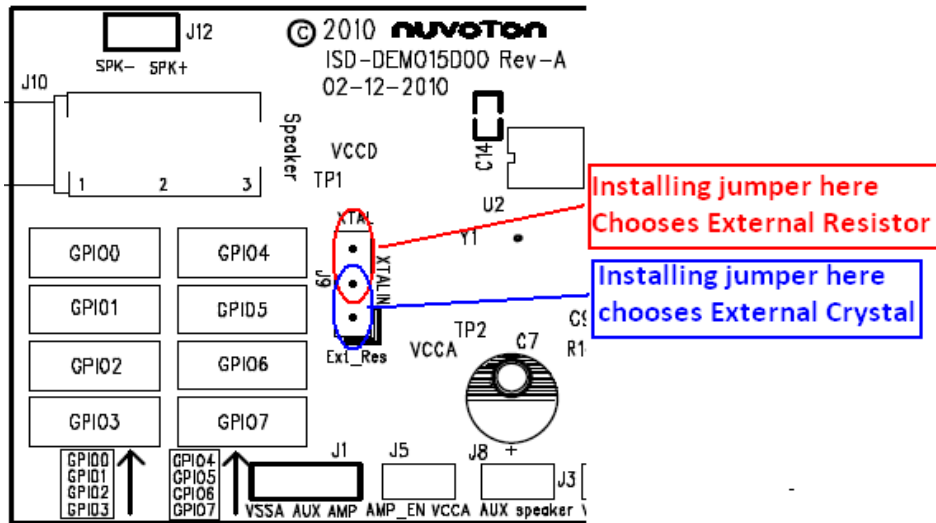
Figure 6 – ISD15D00 is connected onto ISD-ES15D00\_USB mother board

J8: two-pin connector for speaker. This is the output from audio amplifier ISD8101.

J9: Clock source selection.

- Install a jumper at top position to connect the top two pins → ISD15D00 device clock can be from internal oscillator with external resistor.
- Install a jumper at bottom position to connect the bottom two pins → ISD15D00 device clock can be from external crystal.

Please note: the silk label on board for J9 XTAL “XTALIN” and “Ext\_Res” should switch the position on Rev-A board. Please bear this mind to avoid confusion.

**Figure 7 – Clock source selection**

J10: ISD15D00 PWM output jack to speaker.

J11: ISD15D00 I2S signal header.

J12: ISD15D00 PWM output header to speaker.

## Operations under VPE

- Connect a ISD15D00 demo board to USB dongle
- Plug in USB dongle into a PC USB port
- Launch ISD15D00 VPE

These operations do not have to follow a special order. USB dongle is hot pluggable, and so is the demo board. However, during digital programming, demo board needs to be connected otherwise the integrity of flash image cannot be guaranteed.

User can refer VPE user manual for the operation guide. VPE user manual can be found in VPE installation folder; i.e. usually it is under: C:\program files\ISD-VPE15D00.

## Standalone Operation

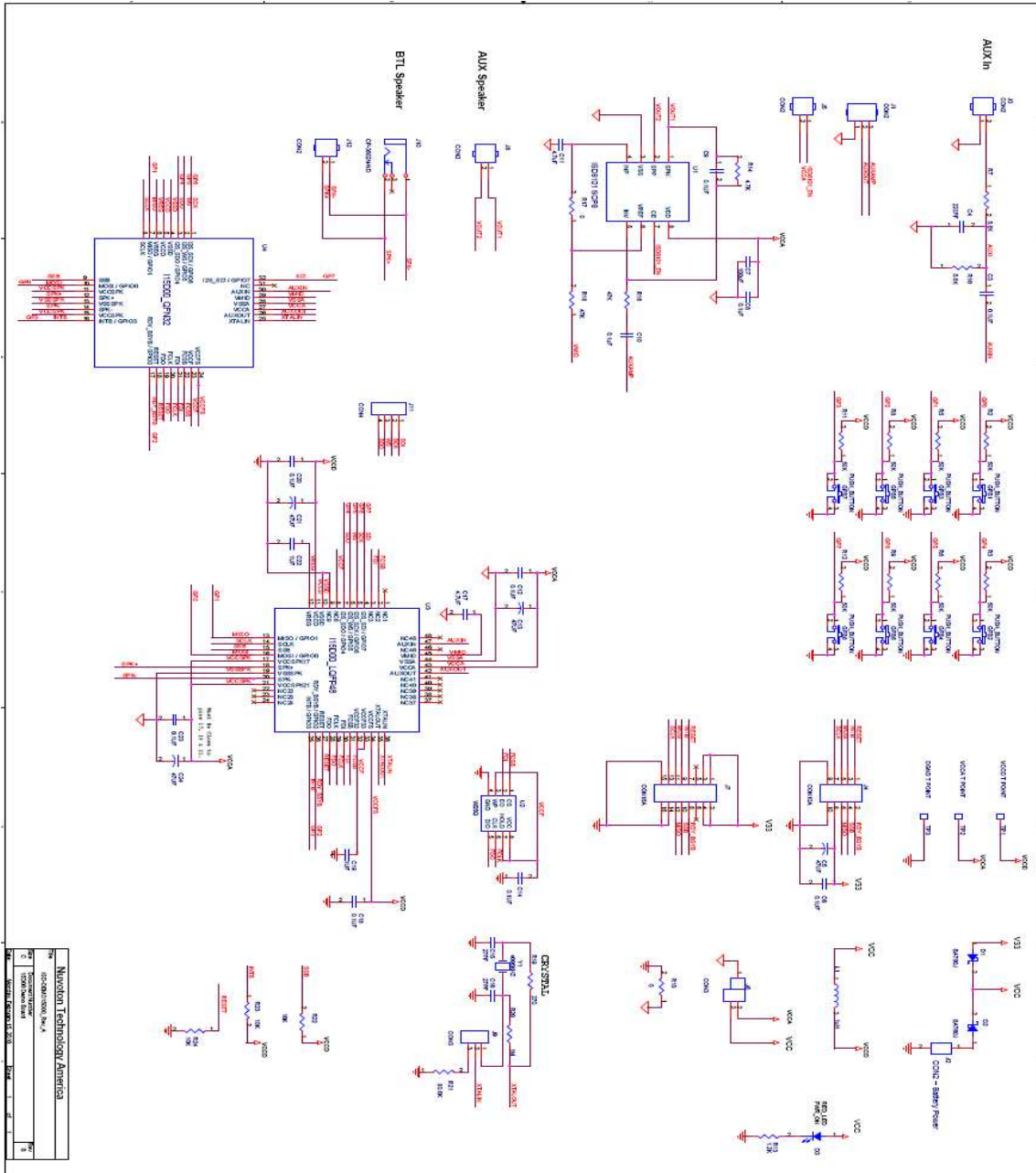
There are 8 push buttons on ISD-DEMO15D00 board which allow user to evaluate the ISD15D00 feature of trigger play. **Figure 8** below show this operation environment.



**Figure 8 – ISD15D00 demo board standalone evaluation.**



# Board Schematic



Nuvoton Technology America	
Part No.	ISD-DEMO15D00 Rev. A
Rev.	1.0
Issue Date	2011.01.20
Page	1 of 1