



Chipsmall Limited consists of a professional team with an average of over 10 year of expertise in the distribution of electronic components. Based in Hongkong, we have already established firm and mutual-benefit business relationships with customers from,Europe,America and south Asia,supplying obsolete and hard-to-find components to meet their specific needs.

With the principle of “Quality Parts,Customers Priority,Honest Operation,and Considerate Service”,our business mainly focus on the distribution of electronic components. Line cards we deal with include Microchip,ALPS,ROHM,Xilinx,Pulse,ON,Everlight and Freescale. Main products comprise IC,Modules,Potentiometer,IC Socket,Relay,Connector.Our parts cover such applications as commercial,industrial, and automotives areas.

We are looking forward to setting up business relationship with you and hope to provide you with the best service and solution. Let us make a better world for our industry!



Contact us

Tel: +86-755-8981 8866 Fax: +86-755-8427 6832

Email & Skype: info@chipsmall.com Web: www.chipsmall.com

Address: A1208, Overseas Decoration Building, #122 Zhenhua RD., Futian, Shenzhen, China



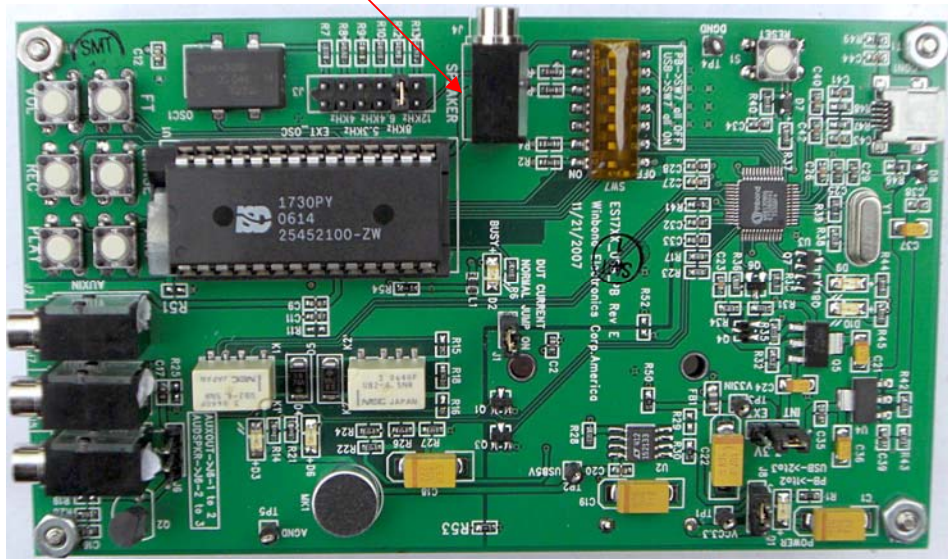
ES17xx Evaluation System Introduction:

This demo system is for evaluation of all operations of the Winbond ISD17xx ChipCorder® IC controlled through the USB port of a PC in real time. The flexible and easy to use software coupled with the ISD7XX_USB-PB board makes a complete evaluation system for ISD17xx Series for an end application. The ISD17xx-USB-PB evaluation system also serves as Single Socket writer/ programmer.

The ISD7XX_USB-PB supports both modes of operations of ISD17xxx family.

- Push Button Mode(Battery Operated Stand-Alone)
- SPI Mode (USB controlled)

ISD17XX-USB-PB Board



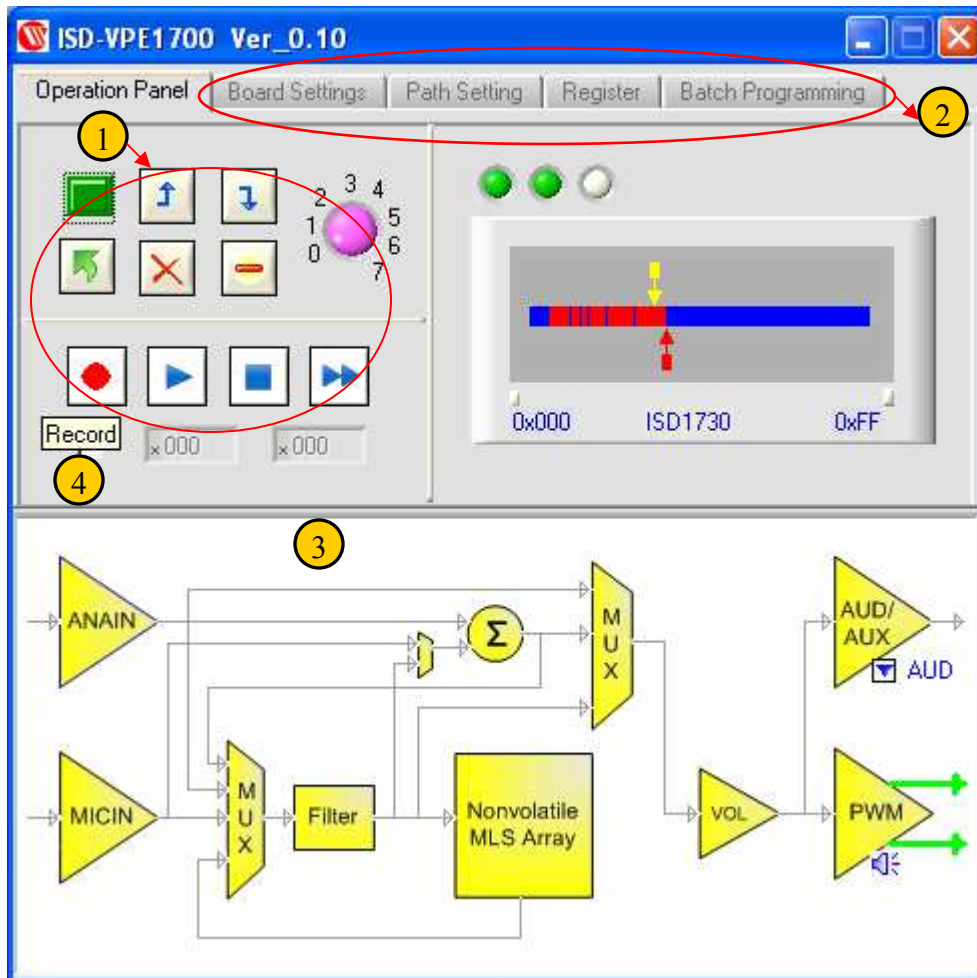
DEVICE SUPPORTED:

| Product Supported | Ordering Code |
|-------------------|-------------------------|
| ISD1730 | ES-17XX_USB_PB Rev E |
| ISD1740 | |
| ISD1750 | |
| ISD1760 | |
| ISD1790 | |
| ISD17120 | |
| ISD17150 | |
| ISD17180 | |
| ISD17210 | |

Chipcorder® ISD- VPE1700 USB Demo Software Operation

The VPE1700 GUI interface consists of:

- Operational and board setting panels on top (1) (2)
- Graphical Block diagrams of all possible input/output paths at the bottom screen. (3)



Major Features:

- The GUI interface consists of two parts, a main operational panel and a configuration panel. Users will work on the operation panel most of the time while they will use configuration panels to setup the device before each operation.
- All GUI controls in this software are self-descriptive. Users can move the mouse cursor over the control button, a tools tip message will popup explaining the purpose of the current control; See above for example; placing mouse over record button will display Record (4)

- ✚ A canvas window on the right side of the main panel, gives users insight of the current ISD17xx memory usage along with Rec/Play pointers and device ID. The blue bar shows empty rows in the chip. Once recorded, the corresponding rows will turn red. The yellow arrow indicates the play pointer and the red arrow indicates the record pointer. User can move the mouse cursor on these arrows to get the current play-pointer address or record-pointer address. After each operation, the pointers are updated in this canvas window.
- ✚ Once the board is attached and the device is powered up, any update on configuration settings will be effective immediately on the graphical block diagram automatically.
- ✚ This software supports all 17xx SPI commands.
- ✚ This Software supports **batch programming**. In Batch programming tab on configuration panel, users can add .wav files; program will calculate the rows needed for each file, assign addresses to these files and burn them into the chip.

CONTENTS OF KIT:

- One Sample ISD17130
- CD (with Applications Software and User's guide with demo boards schematics)
- 8 Ohm Speaker
- USB Cable

Batch Programming

Batch programming allows users to preprogram multiple wav files into the chip by a single click. Users can select files, arrange file order, save into a project file, clear, load and burn these wav sounds to a continuous area of memory starting from row 16 (hex 10) of the memory array. The address selection and calculation is based on the ISD1700 circular memory management.

