



Chipsmall Limited consists of a professional team with an average of over 10 year of expertise in the distribution of electronic components. Based in Hongkong, we have already established firm and mutual-benefit business relationships with customers from,Europe,America and south Asia,supplying obsolete and hard-to-find components to meet their specific needs.

With the principle of "Quality Parts,Customers Priority,Honest Operation,and Considerate Service",our business mainly focus on the distribution of electronic components. Line cards we deal with include Microchip,ALPS,ROHM,Xilinx,Pulse,ON,Everlight and Freescale. Main products comprise IC,Modules,Potentiometer,IC Socket,Relay,Connector.Our parts cover such applications as commercial,industrial, and automotives areas.

We are looking forward to setting up business relationship with you and hope to provide you with the best service and solution. Let us make a better world for our industry!



Contact us

Tel: +86-755-8981 8866 Fax: +86-755-8427 6832

Email & Skype: info@chipsmall.com Web: www.chipsmall.com

Address: A1208, Overseas Decoration Building, #122 Zhenhua RD., Futian, Shenzhen, China



MultiModem® ISI

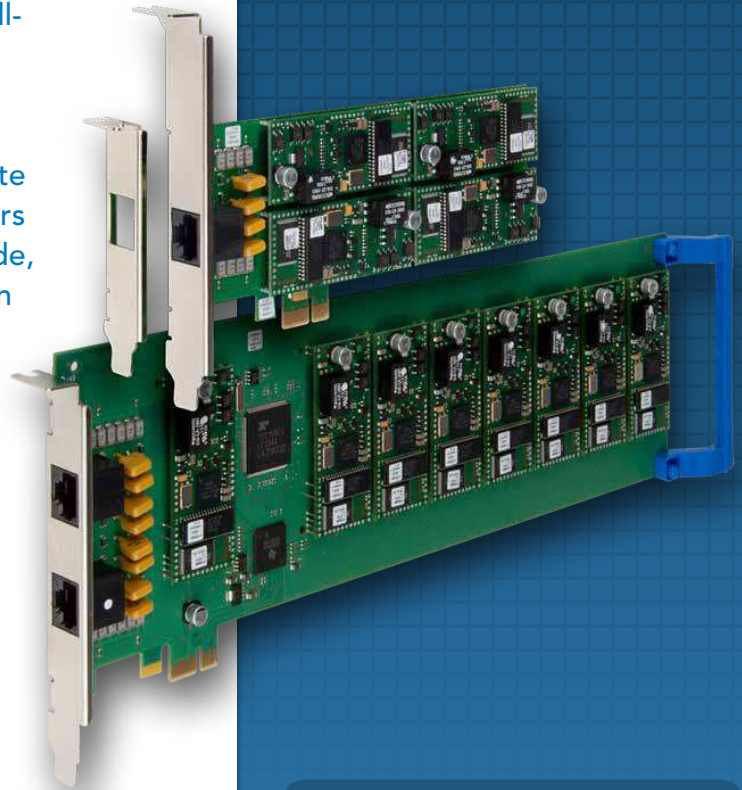


Multiport Analog Modem Card

The MultiModem® ISI modem card is ideal for small- to mid-sized companies requiring analog dial-up remote access or a dedicated fax server solution. It provides four or eight built-in V.92/56K modems for cost-effective, high-density, server-based remote access. The MultiModem ISI modem card also offers V.34/33.6K Super G3 fax and Error Correction Mode, that can reduce fax transmission time by more than half when compared to traditional fax modems.

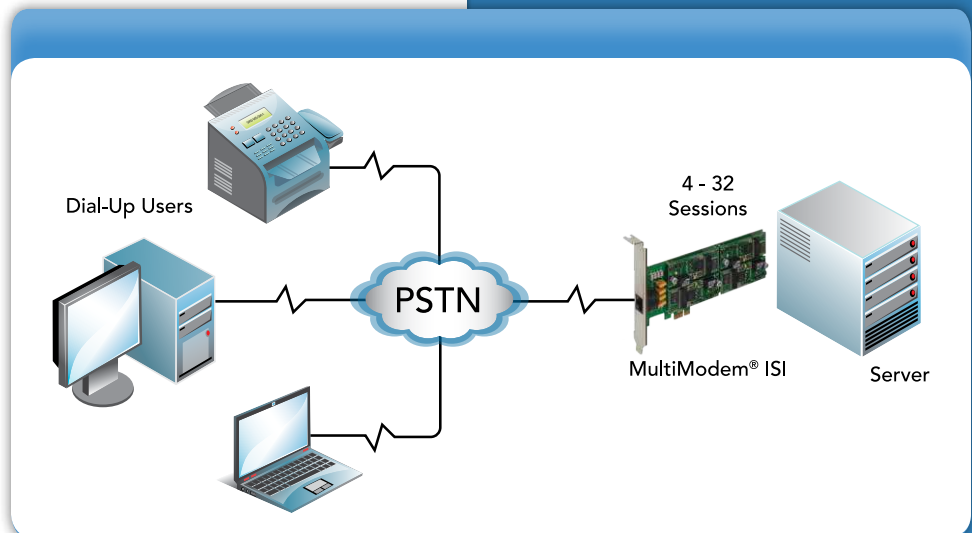
Features

- Available with four or eight integrated V.92/56K modems
- V.92/56K download speeds and 48K upload speeds when connecting with V.92 servers
- Class 1.0 and Class 2.1 faxing at speeds to V.34/33.6K bps (Super G3)
- Error Correction Mode (ECM) provides fast and reliable fax transmissions
- V.44 compression improves data throughput rates
- U.S. Caller ID reporting
- Sustained data rates to 460.8K per port
- Phone cables included
- Windows® 8/7/Vista/XP, Windows Server 2012/2008/2003 (32-bit/64-bit) and Linux
- One server can support up to four modem cards
- Remote configuration for centralized setup and management
- 3.3V and 5V Universal PCI or PCI Express models
- Compatible with PCI-X slot (Universal PCI models)
- Flash memory for easy updates
- Two-year warranty



Benefits

- High-density, V.92 connections
- V.34/33.6K Super G3 fax with Error Correction Mode
- Supports leading remote access and fax software
- Universal PCI and PCI Express



Specifications

Modem

Data: V.92, V.90, enhanced V.34, V.32bis, V.22bis

Error Correction: V.42, MNP Class 3 & 4

Data Compression: V.44, V.42bis, MNP Class 5

Fax

Standards: V.34, V.17, V.29, V.27ter, V.21, T.30, T.30 Annex A, T.30 Annex F, T.31, T.31 Annex B, T.32 Annex C, TR29.2 Class 2 Recommendation

Rates: 33.6K, 31.2K, 28.8K, 26.4K, 24K, 21.6K, 19.2K, 16.8K, 14.4K, 12K, 9600, 7200, 4800, 2400, 300 bps

Error Correction: ECM

Compression: MH (T.4), MR (T.4), & MMR (T.6)

Conversion: Real time (on-the-fly) compression conversion

Commands: Class 1, 2, 1.0, 2.0, 2.1

Bus Type

3.3V & 5V Universal PCI or PCI Express (x1)

Operating System Support

Windows 8/7/Vista/XP, Windows Server 2012/2008/2003 (32-bit/64-bit) and Linux

Cabling

Fan out cable with 1 or 2 RJ-45 connectors & 4 or 8

RJ-11 connectors

Physical Description

12.28" L x 4.2" H; 8.7 oz (312 mm x 107 mm; 247 g)

Low Profile Model: 6.67" L x 2.54" H (169.6 mm x 6.64 mm)

Operating Environment

Temperature Range: +23° to +140° F (-5° to +60° C)

Humidity: 20% to 90% RH noncondensing

Approvals

CE Mark

EMC: FCC Part 15 Class B, EN 55022, EN 55024

Safety: UL/cUL 60950-1, EN 60950-1, AS/NZS 60950:2000, CCC

Telecom: 47CFR Part 68, CS03, TBR21

Other countries also included

Ordering Information

Product	Description	Region
ISI5634UPCI/8	V.92, 8-Modem Card - Universal PCI	Global
ISI5634UPCI/4	V.92, 4-Modem Card - Universal PCI	Global
ISI9234PCIE/8	V.92, 8-Modem Card - PCI Express	Global
ISI9234PCIE/4	V.92, 4-Modem Card - PCI Express	Global
ISI9234HPCIE/4	V.92, 4-Modem Card - PCI Express (Low Profile)	Global

Services & Warranty

Multi-Tech's comprehensive Support Services programs offer a full array of options to suit your specific needs. These services are aimed at protecting your investment, extending the life of your solution or product, and reducing total cost of ownership. Our seasoned technical experts, with an average tenure of more than 10 years, can walk you through smooth installations, troubleshoot issues and help you with configurations. Products include a 2-year warranty that can be extended up to 5 years via Multi-Tech's Extended Warranty program, which offers the convenience of Overnight Service* for optimal uptime.

Extended Warranty & Overnight Services

To give you peace-of-mind and protect your investment, our Extended Warranty Service Plans ensure your Multi-Tech products are covered for 1, 2, or 3 years beyond the manufacturer's warranty with an optional Overnight Service plan*.

Installation Support

Multi-Tech's Installation Support Service delivers priority service with the ability to work one-on-one with an experienced Multi-Tech technical support engineer, to guide you through the installation process for our products.

Technical Support Services

At Multi-Tech, we're committed to providing you personalized attention and quality service while providing you a quick response to your product support needs. We have several options of support for you to choose from.

For additional information on Support Services as well as other service offerings, please contact your Multi-Tech representative or visit www.multitech.com/support.go.

* Overnight replacement service is currently available for U.S. customers.

World Headquarters

Multi-Tech Systems, Inc.
2205 Woodale Drive
Mounds View, MN 55112 U.S.A.
Tel: 763-785-3500
Toll-Free: 800-328-9717
Email: sales@multitech.com
www.multitech.com

EMEA Headquarters

Multi-Tech Systems (EMEA)
United Kingdom
Tel: +(44) 118 959 7774
Email: sales@multitech.co.uk

Produced in the U.S. of U.S. and non-U.S. components. Features and specifications are subject to change without notice.

Trademarks and Registered Trademarks: Multi-Tech and the Multi-Tech logo, MultiModem: Multi-Tech Systems, Inc. All other products and technologies are the trademarks or registered trademarks of their respective holders.

4/14 • 86000323 • © 2014 by Multi-Tech Systems, Inc. All rights reserved.

