



Chipsmall Limited consists of a professional team with an average of over 10 year of expertise in the distribution of electronic components. Based in Hongkong, we have already established firm and mutual-benefit business relationships with customers from,Europe,America and south Asia,supplying obsolete and hard-to-find components to meet their specific needs.

With the principle of “Quality Parts,Customers Priority,Honest Operation,and Considerate Service”,our business mainly focus on the distribution of electronic components. Line cards we deal with include Microchip,ALPS,ROHM,Xilinx,Pulse,ON,Everlight and Freescale. Main products comprise IC,Modules,Potentiometer,IC Socket,Relay,Connector.Our parts cover such applications as commercial,industrial, and automotives areas.

We are looking forward to setting up business relationship with you and hope to provide you with the best service and solution. Let us make a better world for our industry!



Contact us

Tel: +86-755-8981 8866 Fax: +86-755-8427 6832

Email & Skype: info@chipsmall.com Web: www.chipsmall.com

Address: A1208, Overseas Decoration Building, #122 Zhenhua RD., Futian, Shenzhen, China



Introduction

The ISL6411 integrates three ultra low noise, low dropout linear regulators providing a highly integrated single-chip solution for 802.11 wireless chipset architectures. It operates from 3.0V to 3.8V input and provides preset output voltages - LDO1 set at 1.8V, LDO2 and LDO3 set at 2.84V.

The device features power sequencing specifically for wireless chipsets. The outputs are sequenced such that LDO1, the 1.8V core regulator voltage, is always within regulation before LDO2, the 2.84V output LDO, is sequenced on. When powering down, power to the 2.84V LDO2 is removed before the 1.8V LDO1 core regulator is sequenced off.

Designed with an internal P-channel MOSFET pass transistor, the ISL6411 operates with a low supply current. An output fault detection circuit indicates loss of regulation on any of the three outputs. Other features include a logic controlled shutdown mode, short circuit and thermal shutdown protection, and reverse battery protection.

The ISL6411 also includes a RESET function. Integration of this function into the ISL6411 eliminates the additional RESET IC and external support components required in wireless chipset power supply applications. The IC asserts a RESET signal whenever the V_{CC} (IN) supply voltage drops below a preset threshold, keeping it asserted for at least 100ms after V_{CC} (IN) has risen above the reset threshold. Two RESET outputs are provided; $\overline{\text{RESET}}$ is a push-pull active-LOW output, while RESET is an active-HIGH output.

Applications

- PRISM® 3 Chipsets – ISL37106P
- WLAN Cards
 - PCMCIA, Cardbus32, MiniPCI Cards
 - Compact Flash Cards
- Liberty Chipset

ISL6411 Reference Design

TABLE 1. ISL6411 EVALUATION BOARD

BOARD NAME	IC PART NUMBER	PACKAGE
ISL6411EVAL1	ISL6411IR	16-Ld QFN

Quick Start Evaluation

The evaluation board is shipped “ready to use” right from the box. The board accepts a 3.3V input from a standard power supply. The output can be exercised through the use of an external load.

There are posts available on the board for introducing power to the board and for drawing current from the regulated outputs. Post connectors are also available to monitor power good conditions FAULT (P11), RESET (P9) and $\overline{\text{RESET}}$ (P10). Posts for Shutdown functions SHDN (P12) and SHDN3 (P13) allows low power mode function testing.

Each evaluation board kit is sent with 5 samples of ISL6411CR.

Recommended Test Equipment

To test the functionality of the ISL6411, the following equipment is recommended:

- An adjustable 0V - 5V, 2A capable bench power supply
- An electronic load
- A Four channel oscilloscope with probes
- A Precision digital multimeter

Power and Load Connections

Input Voltage - Connect the positive lead of the adjustable bench power supply to the 3.3V post (P3). Connect the ground lead of the supply to GND post (P4).

Output Voltages - The ISL6411EVAL1 provides fixed output voltages for use in Wireless Chipset applications. Internal trimmed resistor networks inside the chip set the nominal output voltages as below:

$$V_{OUT1} = 1.8V \text{ (P5)}$$

$$V_{OUT2} = 2.84V \text{ (P7)}$$

$$V_{OUT3} = 2.84V \text{ (P1)}$$

The outputs can be exercised through external load on connectors. The maximum currents are V_{OUT1} - 500mA, V_{OUT2} - 300mA and V_{OUT3} -200mA.

Output Loading, Sourcing Current - To load the V_{OUT1} output connect the positive lead of the electronic load to the V_{OUT1} (P5) post and the return terminal of the same load channel to the GND (P6) post. Similarly connect the positive terminal of the second load channel to the V_{OUT2} (P7) post and the return terminal to the GND (P8) post to load the output of LDO2. The LDO3 output can be loaded by connecting the positive terminal of a third channel of the electronic load to the V_{OUT3} (P1) post and the return terminal to the GND (P2) post.

Shutdown

Driving the SHDN input (P12) LOW puts both LDO1 and LDO2 into shutdown mode. Driving the SHDN3 (P13) input LOW puts LDO3 in shutdown mode. Pulling the SHDN and SHDN3 pins LOW simultaneously, puts the entire chip into shutdown mode, and supply current drops to 5 μ A typical. External pull up resistors are not required because both SHDN and SHDN3 inputs have internal pull-up resistors, so that in normal operation the outputs are always enabled.

Evaluation Board Performance

ISL6411EVAL1 Evaluation board provides easy platform to characterize performance of the IC.

Output Performance

Figures below show transient response and regulation for LDO1, LDO2 and LDO3.

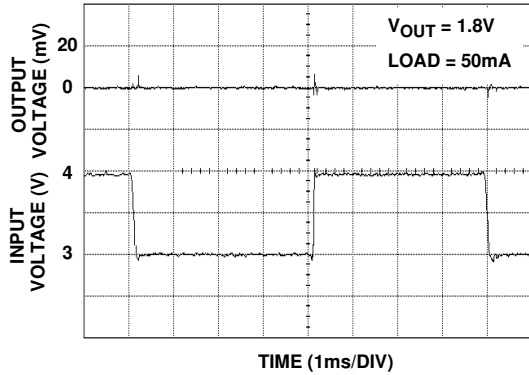


FIGURE 1. TRANSIENT RESPONSE (V_{OUT1})

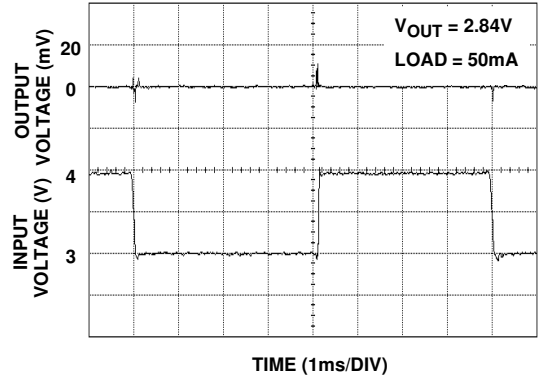


FIGURE 2. TRANSIENT RESPONSE (V_{OUT2})

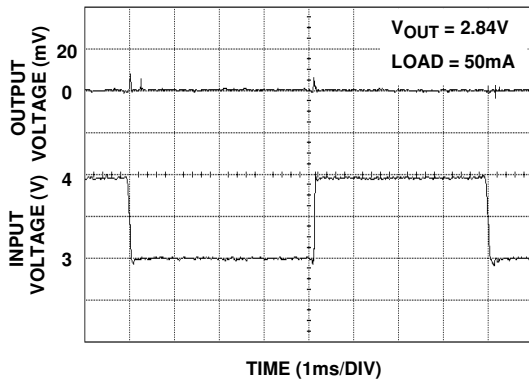


FIGURE 3. TRANSIENT RESPONSE (V_{OUT3})

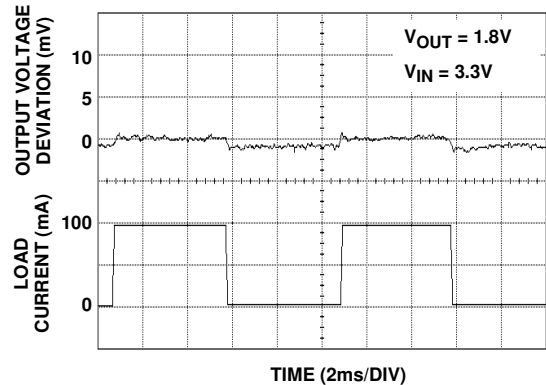


FIGURE 4. LOAD REGULATION (V_{OUT1})

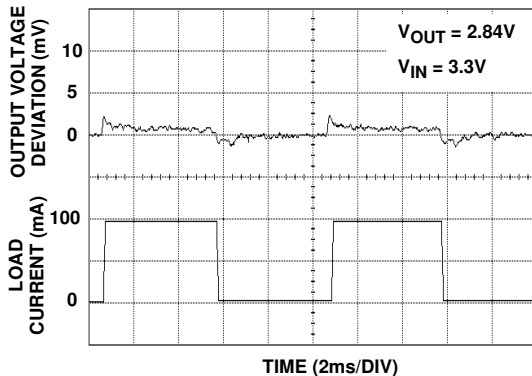


FIGURE 5. LOAD REGULATION (V_{OUT2})

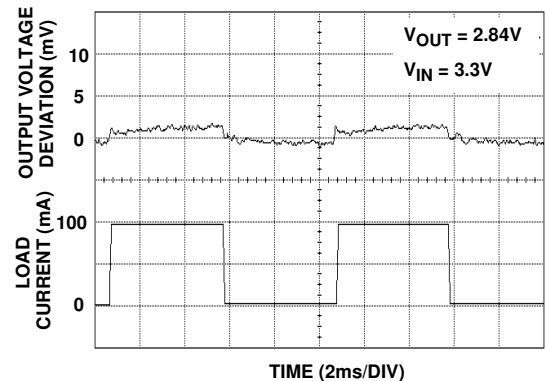


FIGURE 6. LOAD REGULATION (V_{OUT3})

Dropout Voltage

The ISL6411 features a typical $0.5\Omega R_{DS(ON)}$ P-channel MOSFET pass transistors. This provides several advantages over similar designs using PNP bipolar pass transistors. The P-Channel MOSFET requires no base drive, which reduces quiescent current considerably. PNP based regulators waste considerable current in dropout when the pass transistor saturates. They also use high base drive currents under large loads. The ISL6411 does not suffer from these problems and ultra low drop-out regulators to maintain 2.84V supplies within regulation with worst case minimum line input. Both LDO2 and LDO3 can supply full load with less than 3.0V input. Figure below shows the dropout voltage vs output load current for both LDO2 and LDO3.

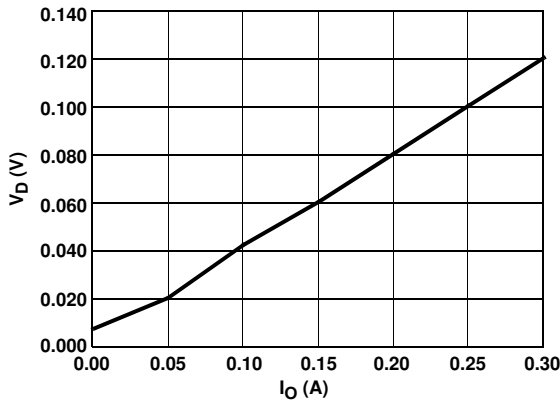


FIGURE 7. LD02 DROPOUT VOLTAGE

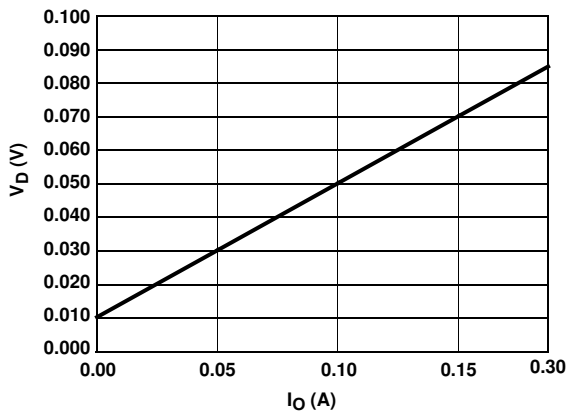


FIGURE 8. LD03 DROPOUT VOLTAGE

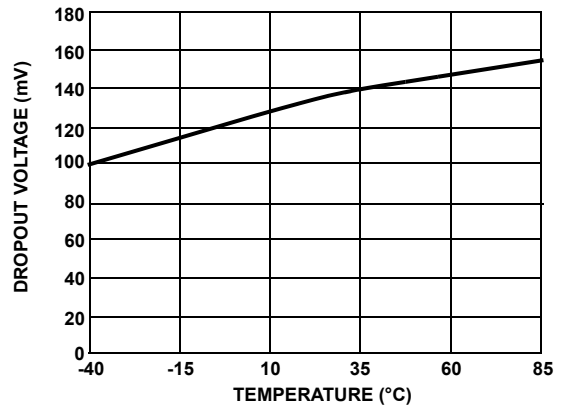


FIGURE 9. LD02 DROPOUT VOLTAGE vs TEMPERATURE

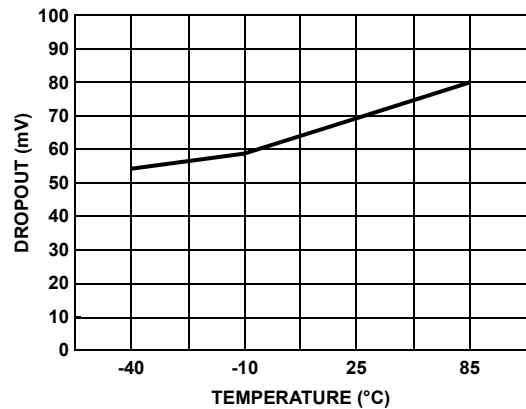


FIGURE 10. LD03 DROPOUT VOLTAGE vs TEMPERATURE

Current Limit

The ISL6411 monitors and controls the pass transistor’s gate voltage to limit the output current. The current limit for LDO1 is 550mA, LDO2 is 330mA and LDO3 is 250mA. Performance in over current event can be tested by applying over load on respective LDO outputs. The FAULT output will go low for over current condition on any of the three LDO. The ISL6411 based DC-DC converter is fully protected from short circuit to ground outputs due to the current limit and thermal protection features.

Integrated RESET for MAC/Baseband Processors

The ISL6411 includes a microprocessor supervisory circuit. This circuit eliminates the extra RESET IC and external components needed in wireless chipset applications. This block performs a single function; it asserts a RESET signal whenever the V_{IN} supply voltage decreases below a preset threshold 2.63V, keeping it asserted for a programmable time (set by external capacitor CT) after the V_{IN} pin voltage has risen above the RESET threshold.

The push pull output stage of the reset circuit provides both an active-Low \overline{RESET} (P10) and an active-HIGH RESET (P9) output. This function is guaranteed to be in the correct

state for V_{IN} down to 1V. In addition to issuing a reset to the microprocessor during power-up, power down and brownout conditions, this block is relatively immune to short duration, negative-going V_{IN} transients/glitches. Figure below shows the relations between RESET timing capacitor and programmable RESET delay.

Thermal Overload Protection

Thermal overload protection limits total power dissipation in the ISL6411. When the junction temperature (T_J) exceeds +150°C, the thermal sensor sends a signal to the shutdown logic, turning off the pass transistor and allowing the IC to cool. The pass transistor turns on again after the IC's junction temperature cools 20°C, resulting in a pulsed output during continuous thermal overload conditions. Thermal overload protection protects the ISL6411 against fault conditions. For continuous operation, do not exceed the absolute maximum junction temperature rating of +150°C.

Operating Region and Power Dissipation

The maximum power dissipation of ISL6411 depends on the thermal resistance of the IC package and circuit board, the temperature difference between the die junction and

ambient air, and the rate of air flow. The power dissipated in the device is:

$$P_T = P_1 + P_2 + P_3, \text{ where}$$

$$P_1 = I_{OUT1} (V_{IN} - V_{OUT1})$$

$$P_2 = I_{OUT2} (V_{IN} - V_{OUT2})$$

$$P_3 = I_{OUT3} (V_{IN} - V_{OUT3})$$

The maximum allowed power dissipation is:

$$P_{MAX} = (T_{JMAX} - T_A) / \theta_{JA}$$

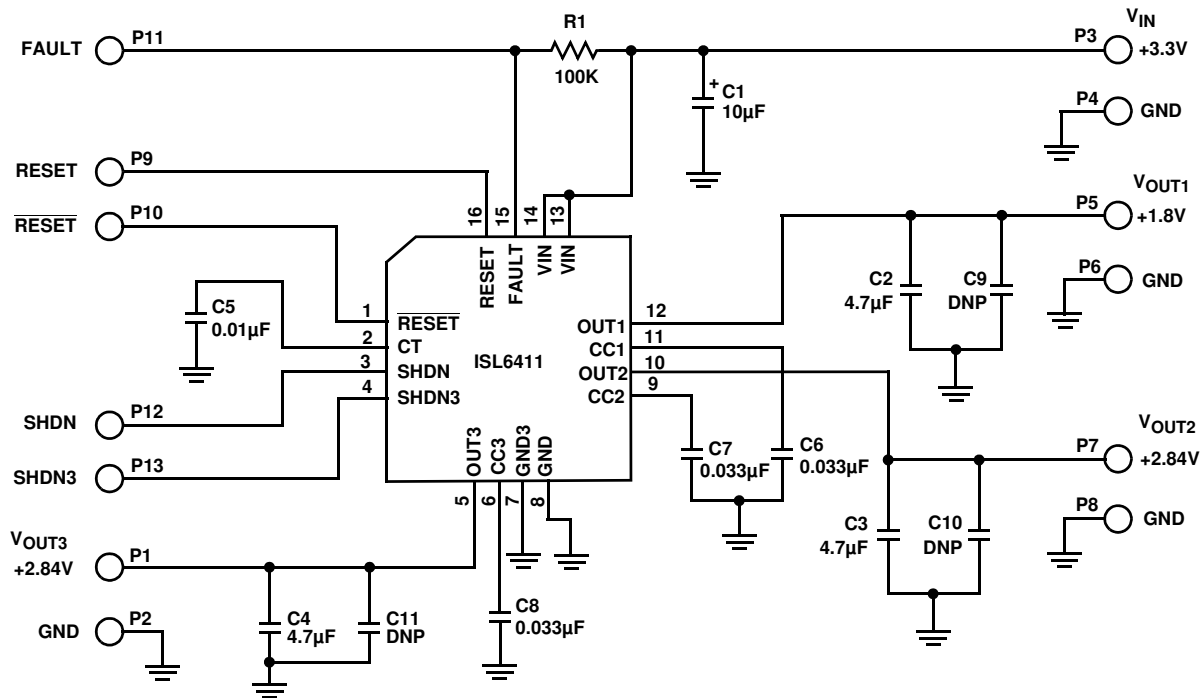
Where $T_{JMAX} = 150^\circ\text{C}$, T_A = ambient temperature, and θ_{JA} is the thermal resistance from the junction to the surrounding environment.

References

For Intersil documents available on the web, see <http://www.intersil.com/>

[1] *ISL6411 Data Sheet*, Intersil Corporation, File No. FN9081.

ISL6411EVAL1 Schematic



ISL6411EVAL1 Bill of Materials

ITEM	REFERENCE	QTY	PART NUMBER	PART TYPE	DESCRIPTION	PACKAGE	VENDOR
1	U1	1	ISL6411IR	IC, Linear, Multi-Output	Regulator, Low Drop Out	16-Lead QFN 4x4	Intersil
CAPACITORS							
2	C1	1	1210ZC106MAT2A	Capacitor, Ceramic, X7R	10 μ F, 20%, 10V	SM_1210	AVX/Panasonic
3	C2, C3, C4	3	1210ZC475MAT2A	Capacitor, Ceramic, X7R	4.7 μ F, 20%, 10V	SM_1210	AVX/Panasonic
4	C9, C10, C11 (DNP)	3		Capacitor, Ceramic, X7R		SM_1210	AVX/Panasonic
5	C5	1	0603ZC103KAT2A	Capacitor, Ceramic, X7R	0.01 μ F, 10%, 10V	SM_0603	AVX/Panasonic
6	C6, C7, C8	3	0603ZC333JAT2A	Capacitor, Ceramic, X7R	0.033 μ F, 5%, 10V	SM_0603	AVX/Panasonic
RESISTORS							
7	R1	1		Resistor, Film	100k Ω , 5%, 0.1W	SM_0603	Panasonic
OTHERS							
8	P1 - P13	13	1514-2	Turret Post	Terminal post, through-hole, 1/4 inch tall	PTH	Keystone

ISL6411EVAL1 Evaluation Board Layout

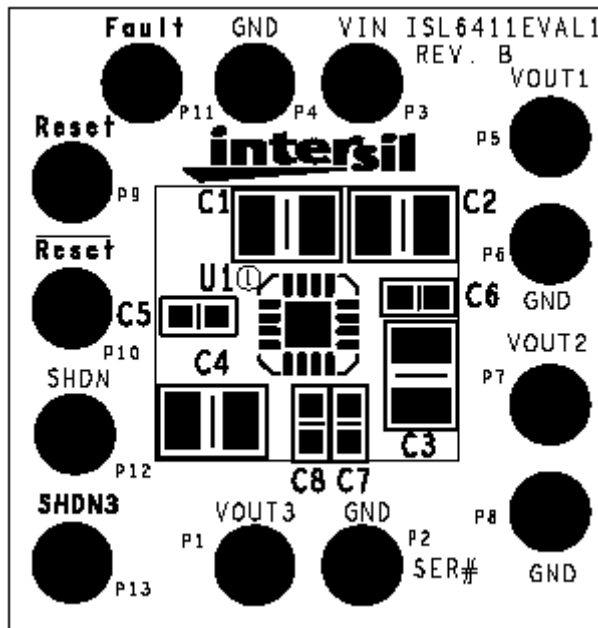


FIGURE 11. ISL6411EVAL1 - TOP LAYER SILK SCREEN

ISL6411EVAL1 Evaluation Board Layout (Continued)

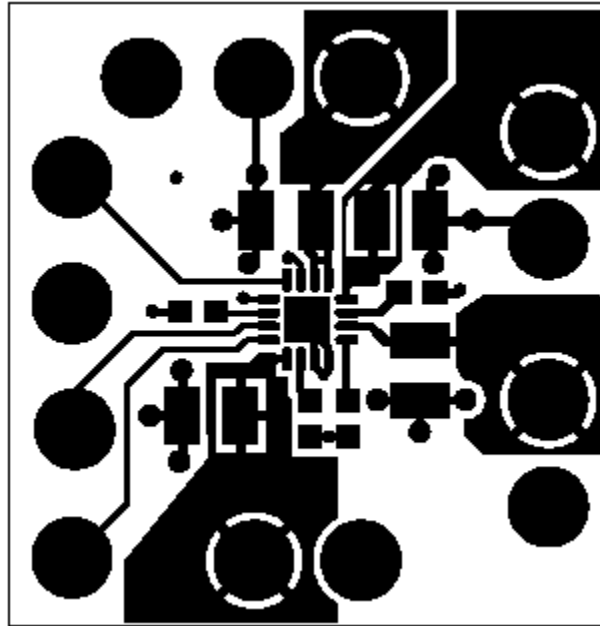


FIGURE 12. ISL6411EVAL1 - TOP LAYER

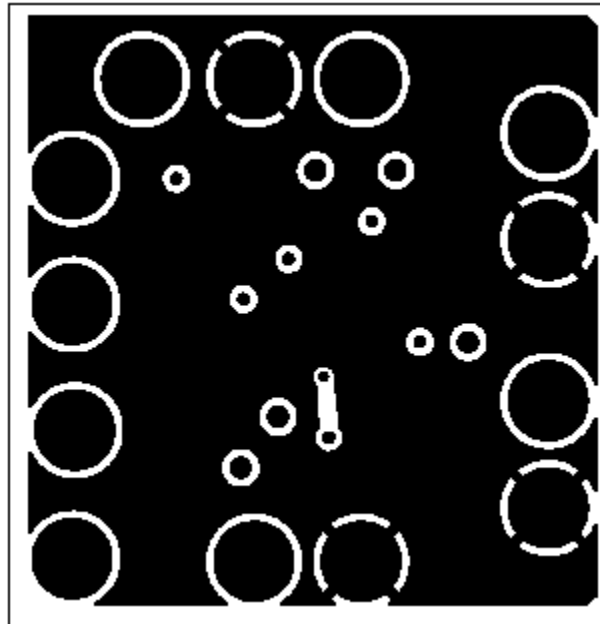


FIGURE 13. ISL6411EVAL1 - LAYER 2 (GROUND)

ISL6411EVAL1 Evaluation Board Layout (Continued)

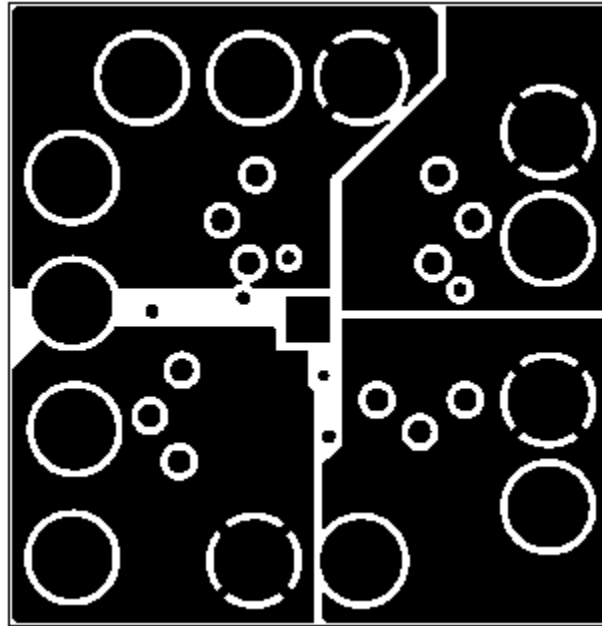


FIGURE 14. ISL6411EVAL1 - LAYER 3 (POWER)

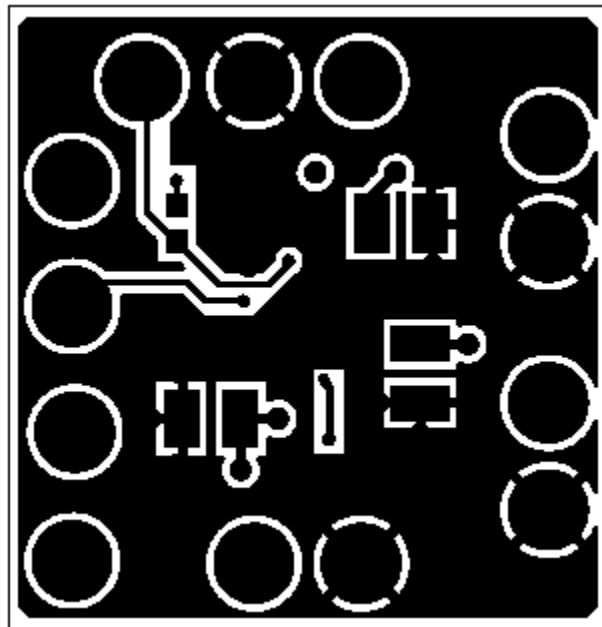


FIGURE 15. ISL6411EVAL1 - LAYER 4 (BOTTOM)

ISL6411EVAL1 Evaluation Board Layout (Continued)

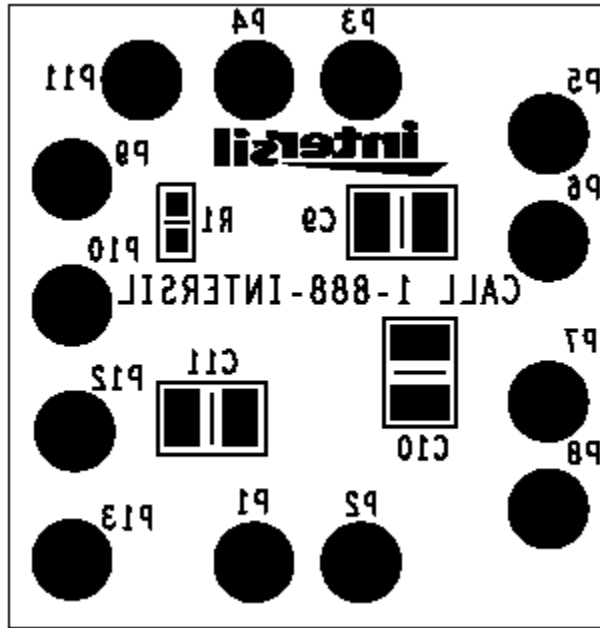


FIGURE 16. ISL6411EVAL1 - BOTTOM LAYER SILK SCREEN

All Intersil U.S. products are manufactured, assembled and tested utilizing ISO9000 quality systems. Intersil Corporation's quality certifications can be viewed at www.intersil.com/design/quality

Intersil products are sold by description only. Intersil Corporation reserves the right to make changes in circuit design, software and/or specifications at any time without notice. Accordingly, the reader is cautioned to verify that data sheets are current before placing orders. Information furnished by Intersil is believed to be accurate and reliable. However, no responsibility is assumed by Intersil or its subsidiaries for its use; nor for any infringements of patents or other rights of third parties which may result from its use. No license is granted by implication or otherwise under any patent or patent rights of Intersil or its subsidiaries.

For information regarding Intersil Corporation and its products, see www.intersil.com