



Chipsmall Limited consists of a professional team with an average of over 10 year of expertise in the distribution of electronic components. Based in Hongkong, we have already established firm and mutual-benefit business relationships with customers from,Europe,America and south Asia,supplying obsolete and hard-to-find components to meet their specific needs.

With the principle of "Quality Parts,Customers Priority,Honest Operation,and Considerate Service",our business mainly focus on the distribution of electronic components. Line cards we deal with include Microchip,ALPS,ROHM,Xilinx,Pulse,ON,Everlight and Freescale. Main products comprise IC,Modules,Potentiometer,IC Socket,Relay,Connector.Our parts cover such applications as commercial,industrial, and automotives areas.

We are looking forward to setting up business relationship with you and hope to provide you with the best service and solution. Let us make a better world for our industry!



## Contact us

Tel: +86-755-8981 8866 Fax: +86-755-8427 6832

Email & Skype: info@chipsmall.com Web: www.chipsmall.com

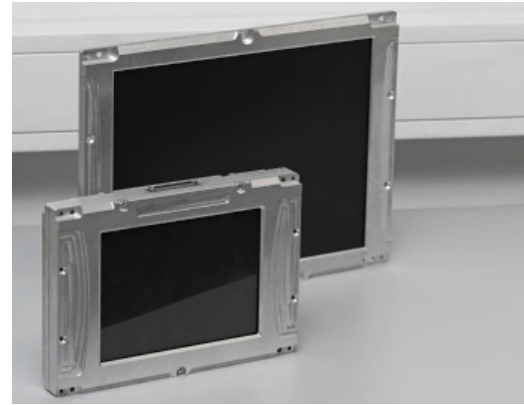
Address: A1208, Overseas Decoration Building, #122 Zhenhua RD., Futian, Shenzhen, China





# Flexible Shielding Mesh

## WIN-SHIELD™ Mesh

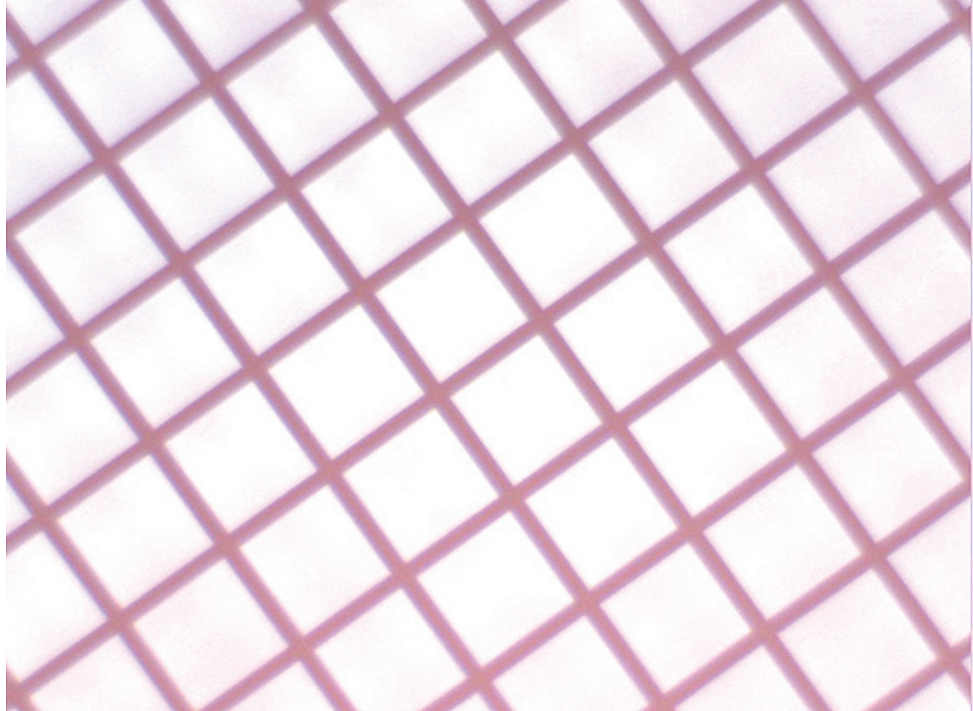


### Customer Value Proposition:

WIN-SHIELD Mesh provides exceptional shielding performance and can be used as an optical product, to cover airflow openings, to wrap cable or other applications where a flexible shielding mesh is necessary.

WIN-SHIELD Mesh has light transmission of greater than 60% and is used as a standard mesh in many optical products. This mesh is tough enough to be used in a standalone fashion. The blackened copper plating reduces glare for improved visibility. In addition, this mesh can be stretched across small vent openings in an electronics enclosure to aid in shielding while allowing airflow.

WIN-SHIELD Mesh is made from 0.0012" diameter blackened copper plated stainless steel wire. The proprietary blackening process provides high performance EMI shielding by allowing direct grounding contact between the mesh and the enclosure surface. Maximum EMI shielding can be achieved by using 100 OPI (openings per inch). The blackening coating is very stable giving uniform coloring with no dusting or smudging of the coating.



### Product Features:

- EMI Shielding for vents and displays
- Easy to form into shapes
- Sheets can be diecut into unique shapes
- Retrofit shielding on legacy equipment
- Used as EMI shielding vent material
- 70% open area
- Flexible material with 100 OPI mesh
- Mesh can be integrated into glass or plastic window for a fully supported EMI solution
- Available in 100, 80, 50 OPI
- Standard sheet size:  
18" x 24" (457 x 610 mm)

### Typical Applications:

- Cover displays and airflow openings in cabinets
- Military electronics
- Retrofit EMI Shielded displays
- Cable wrap
- Flexible circuits shielding

#### Contact Information:

Parker Hannifin Corporation  
Chomerics Division  
77 Dragon Court  
Woburn, MA 01801  
phone 781 935 4850  
fax 781 933 4318  
chomailbox@parker.com  
www.parker.com/chomerics

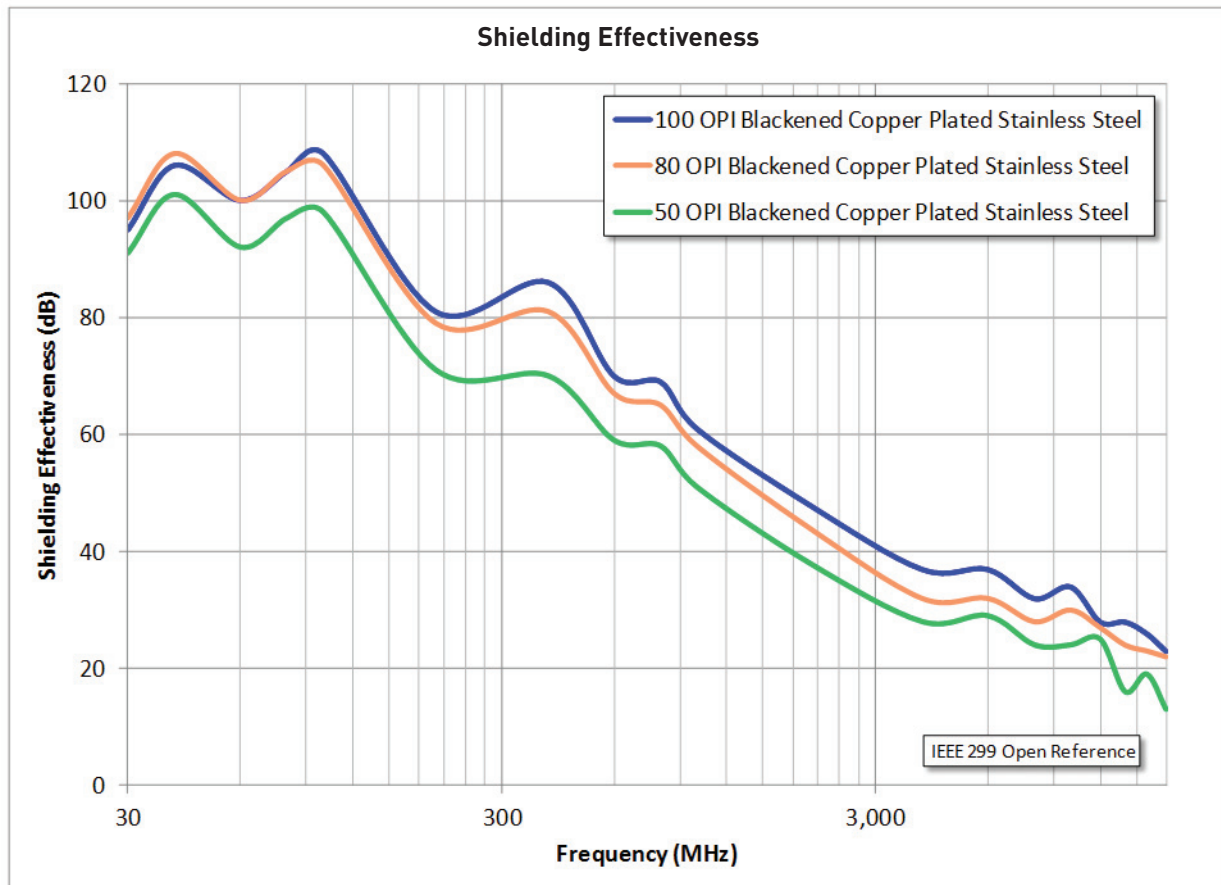


ENGINEERING YOUR SUCCESS.

# Product Information

## Technical Specifications

Part Number	M-50-1824	M-80-1824	M-100-1824
Openings Per Inch	50 OPI	80 OPI	100 OPI
Open Area	80%	75%	70%
Sheet Size	18" x 24" (457 x 610 mm)		
Minimum Order Quantity	5		
Material	Blackened Copper Plated Stainless Steel		
Wire Diameter	0.0012" (0.030 mm)		
Surface Conductivity	<0.100 ohms/sq		
Typical Operating Temperature Range	-40 to +70°C (-40 to +160°F)		
Storage	25°C (80°F), 50% relative humidity		



[www.chomerics.com](http://www.chomerics.com)  
[www.parker.com/chomerics](http://www.parker.com/chomerics)

CHOMERICS® is a registered trademark of Parker Hannifin Corporation. WIN-SHIELD™ is a trademark of Parker Hannifin Corporation.

© 2012 Parker Hannifin Corporation. All rights reserved.

TB1034 EN Nov. 2012



ENGINEERING YOUR SUCCESS.