



Chipsmall Limited consists of a professional team with an average of over 10 year of expertise in the distribution of electronic components. Based in Hongkong, we have already established firm and mutual-benefit business relationships with customers from,Europe,America and south Asia,supplying obsolete and hard-to-find components to meet their specific needs.

With the principle of “Quality Parts,Customers Priority,Honest Operation,and Considerate Service”,our business mainly focus on the distribution of electronic components. Line cards we deal with include Microchip,ALPS,ROHM,Xilinx,Pulse,ON,Everlight and Freescale. Main products comprise IC,Modules,Potentiometer,IC Socket,Relay,Connector.Our parts cover such applications as commercial,industrial, and automotives areas.

We are looking forward to setting up business relationship with you and hope to provide you with the best service and solution. Let us make a better world for our industry!



Contact us

Tel: +86-755-8981 8866 Fax: +86-755-8427 6832

Email & Skype: info@chipsmall.com Web: www.chipsmall.com

Address: A1208, Overseas Decoration Building, #122 Zhenhua RD., Futian, Shenzhen, China



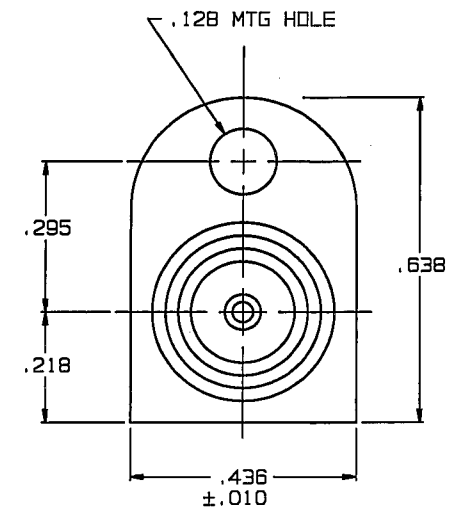
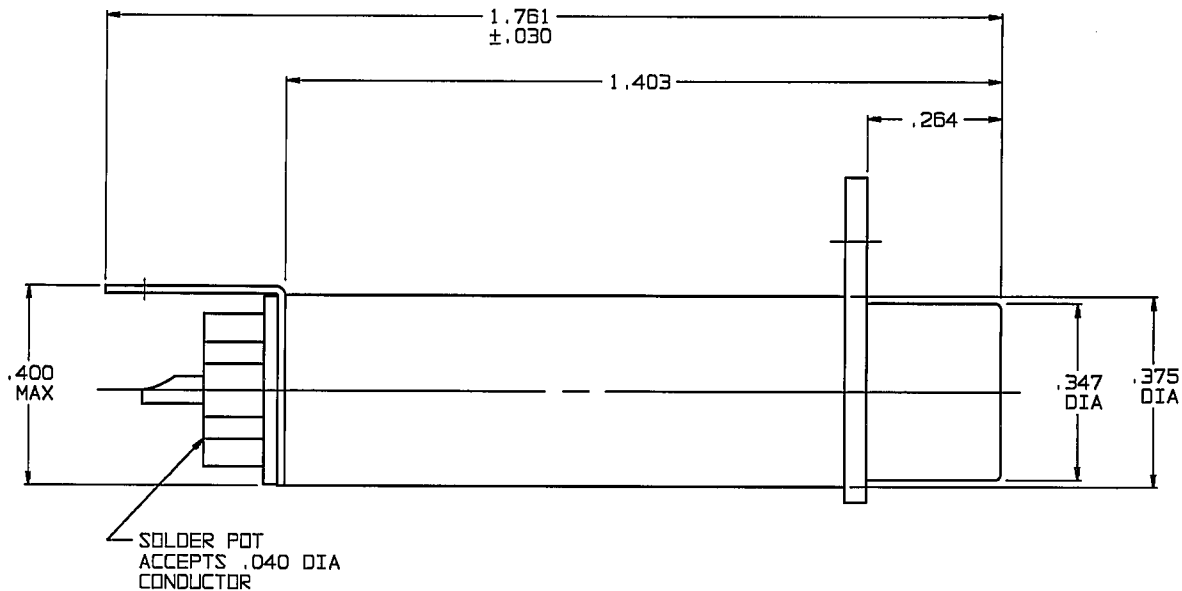
RED INDICATES ORIGINAL

INCH	MM
.005	0.13
.010	0.25
.030	0.76
.040	1.02
.128	3.25
.218	5.54
.264	6.71
.295	7.49
.296	7.52
.347	8.81
.375	9.53
.400	10.16
.436	11.07
.638	16.21
1.403	35.64
1.761	44.73

DWG
SIZE
B

DATA CONTAINED IN THIS DOCUMENT IS
PROPRIETARY TO TROMPETER ELECTRONICS INC.
AND SHALL NOT BE DISCLOSED, COPIED OR USED
FOR PROCUREMENT OR MANUFACTURE WITHOUT
EXPRESS WRITTEN PERMISSION.

REVISIONS			1-0335		SH 1
REV	EO	DESCRIPTION	OWN	APPROVED	DATE
H	11847	SH 2, ADDED NOTE 2 ; NOTE 1 WAS "25 INCH-LB" TORQUE	DKC	<i>Bu: Fce</i>	3/19/97



4. 75 OHM COAXIAL AT & T
MINIATURE (.296 SIZE) SOLDER
POT PATCH RECEPTACLE

3. INTERFACE: TFS-7

2. FINISH: TFS-1A (NICKEL)

1. ALL DIM ARE IN INCHES

QTY		DESCRIPTION			PART NUMBER		ITEM
TOL UNLESS SPECIFIED			TROMPETER ELECTRONICS, INC.		J11D		
.XX ±							
.XXX ± .005							
.XXXX±							
ANGLES±							
DWN	DKC	3-10-97	MATERIAL	CODE IDENT	DRAWING NO.		REV
	CHK	<i>Bu</i> 3-14-97	—	14949	1-0335		H
	ENGR	—					
NEXT ASSY	APPR	<i>Fce</i> 3/13/97	SCALE 4/1	DATE 10/5/67	SHEET 1 OF 2		

NEXT ASSY