



Chipsmall Limited consists of a professional team with an average of over 10 year of expertise in the distribution of electronic components. Based in Hongkong, we have already established firm and mutual-benefit business relationships with customers from,Europe,America and south Asia,supplying obsolete and hard-to-find components to meet their specific needs.

With the principle of “Quality Parts,Customers Priority,Honest Operation,and Considerate Service”,our business mainly focus on the distribution of electronic components. Line cards we deal with include Microchip,ALPS,ROHM,Xilinx,Pulse,ON,Everlight and Freescale. Main products comprise IC,Modules,Potentiometer,IC Socket,Relay,Connector.Our parts cover such applications as commercial,industrial, and automotives areas.

We are looking forward to setting up business relationship with you and hope to provide you with the best service and solution. Let us make a better world for our industry!



Contact us

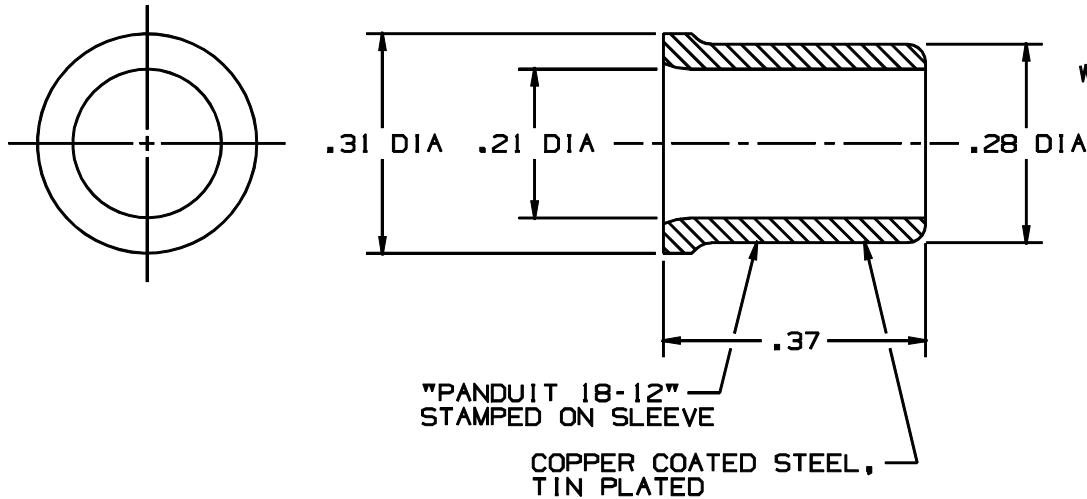
Tel: +86-755-8981 8866 Fax: +86-755-8427 6832

Email & Skype: info@chipsmall.com Web: www.chipsmall.com

Address: A1208, Overseas Decoration Building, #122 Zhenhua RD., Futian, Shenzhen, China



THIS COPY IS PROVIDED ON A RESTRICTED BASIS AND IS NOT TO BE USED IN ANY WAY DETRIMENTAL TO THE INTERESTS OF PANDUIT CORP.





WIRE COMBINATION CHART FOR WIRE JOINT J318-412

WIRE SIZE	NO. OF WIRES	NUMBER OF ADDITIONAL WIRES OF ONE SIZE				
		#18 AWG	#16 AWG	#14 AWG	#12 AWG	#10 AWG
#18 AWG	1	2 to 14	2 to 9	1 to 4	1 to 3	1
	2	1 to 13	1 to 8	1 to 4	1 to 3	0
	3	1 to 12	1 to 7	1 to 4	1 to 3	0
	4	1 to 11	1 to 6	1 to 4	1 to 3	0
	5	1 to 10	1 to 6	1 to 4	1 or 2	0
	6	1 to 9	1 to 6	1 to 3	1 or 2	0
	7	1 to 8	1 to 4	1 or 2	1	0
	8	1 to 7	1 to 3	1 or 2	1	0
	9	1 to 6	1 to 3	1	0	0
	10	1 to 5	1 or 2	0	0	0
	11	1 to 4	1	0	0	0
	12	1 to 3	0	0	0	0
	13	1 or 2	0	0	0	0
	14	1	0	0	0	0
#16 AWG	1	2 to 11	1 to 9	1 to 5	1 to 3	0
	2	1 to 10	1 to 8	1 to 5	1 to 3	0
	3	1 to 9	1 to 7	1 to 3	1 or 2	0
	4	1 to 7	1 to 6	1 to 3	1 or 2	0
	5	1 to 6	1 to 5	1 to 3	1 or 2	0
	6	1 to 6	1 to 4	1 or 2	1	0
	7	1 to 3	1 to 3	1	0	0
	8	1 or 2	1 or 2	0	0	0
	9	1	1	0	0	0
#14 AWG	1	1 to 9	1 to 7	1 to 5	1 to 3	0
	2	1 to 8	1 to 6	1 to 4	1 or 2	0
	3	1 to 6	1 to 5	1 to 3	1	0
	4	1 to 5	1 or 2	1 or 2	1	0
	5	0	1 or 2	1	0	0
#12 AWG	1	1 to 8	1 to 6	1 to 4	1 to 3	2
	2	1 to 6	1 to 5	1 or 2	1 or 2	0
	3	1 to 4	1 or 2	1	1	0
#10 AWG	1	1	0	0	0	1
	2	0	0	0	1	0

CIRCULAR MIL RANGE: 4860-27330


NOTES:

1. RECOMMENDED TOOL - CT-100 OR CT-200
2. FOR SOLID OR STRANDED COPPER WIRE
3. COMBINATIONS: #18 AWG- #10 AWG
4. TWIST WIRES TOGETHER BEFORE ASSEMBLING TO WIRE JOINT.
5. PACKAGE QTY.: -T = 200 (STD)
-2M = 2000 (BULK)
6. WIRE STRIP LENGTH: 1/2" +1/32
-0

7.  LISTED, 587H E52164  CERTIFIED LR-31212

TOLERANCES ±.03

A41005_04

4	1/01	SAB		FILE SPEC WAS N41005AA_PCD_03							 <p>TINLEY PARK, ILLINOIS</p> <p>NON-INSULATED WIRE JOINT J318-412</p>		
3	8/96	JB		ORIGINAL FILE SPEC WAS A41005.2 ADDED AND UPDATED NOTES									
2	1/88	CK		ADDED COPPER WIRE, AND CERTIFIED									
1	9-87	DM		MAT'L WAS STEEL / REDRAWN ON CAD									
REV	DATE	BY	CHK	DESCRIPTION	ECN	PM	CUST	SUP	APP	DRAWN BY DSM	CHK'D	SCALE 4X	DRAWING NO. A41005