



Chipsmall Limited consists of a professional team with an average of over 10 year of expertise in the distribution of electronic components. Based in Hongkong, we have already established firm and mutual-benefit business relationships with customers from,Europe,America and south Asia,supplying obsolete and hard-to-find components to meet their specific needs.

With the principle of “Quality Parts,Customers Priority,Honest Operation,and Considerate Service”,our business mainly focus on the distribution of electronic components. Line cards we deal with include Microchip,ALPS,ROHM,Xilinx,Pulse,ON,Everlight and Freescale. Main products comprise IC,Modules,Potentiometer,IC Socket,Relay,Connector.Our parts cover such applications as commercial,industrial, and automotives areas.

We are looking forward to setting up business relationship with you and hope to provide you with the best service and solution. Let us make a better world for our industry!



Contact us

Tel: +86-755-8981 8866 Fax: +86-755-8427 6832

Email & Skype: info@chipsmall.com Web: www.chipsmall.com

Address: A1208, Overseas Decoration Building, #122 Zhenhua RD., Futian, Shenzhen, China



C&K JA Series Rocker Switches

Features/Benefits

- Right angle PCB mounting
- Cost-effective solution

Typical Applications

- Modems
- Entertainment devices
- Computer printers



Specifications

CONTACT RATING: Q contact material: 2 AMPS @ 125 V AC; 1 AMP @250 V AC (UL/CSA). See page G-81 for additional ratings.

ELECTRICAL LIFE: 10,000 make-and-break cycles at full load.

CONTACT RESISTANCE: Below 20 m Ω typ. initial @2-4 V DC, 100 mA, for both silver and gold plated contacts.

INSULATION RESISTANCE: 10⁹ Ω min.

DIELECTRIC STRENGTH: 1,000 Vrms min. @sea level.

OPERATING TEMPERATURE: -30°C to 85°C

Materials

HOUSING & ACTUATOR SUPPORT: 6/6 nylon (UL 94V-2), black.

ACTUATOR: 6/6 nylon (UL 94V-2), black.

PLUNGER: Glass filled polyester (UL 94V-0).

CONTACTS & TERMINALS: Q contact material: Copper, silver plated. See page G-81 for additional contact materials.

SWITCH SUPPORT TERMINALS: Brass, tin plated (not electrically connected).

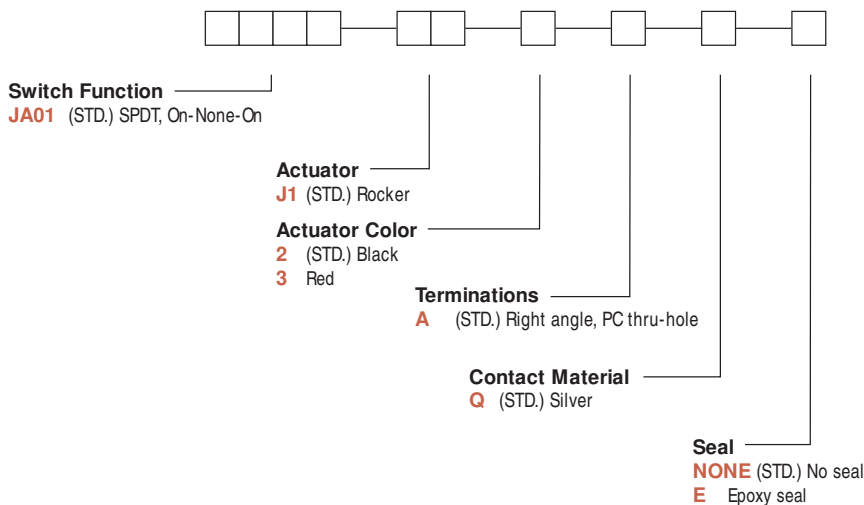
CONTACT SPRING: Music wire or stainless steel.

TERMINAL SEAL: Epoxy.

NOTE: Specifications and materials listed above are for standard switches. For information on specific and custom switches, consult Customer Service Center.

Build-A-Switch

To order, simply select desired option from each category and place in the appropriate box. Available options are shown and described on pages G-80 and G-81. For additional options not shown in catalog, consult Customer Service Center.



Rocker



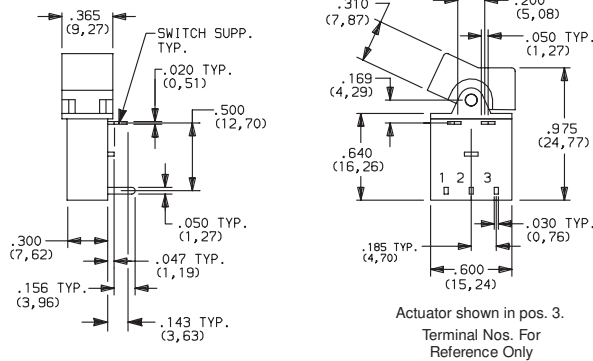
C&K JA Series Rocker Switches

SWITCH FUNCTION



NO. POLES	MODEL NO.	SWITCH FUNCTION			CONNECTED TERMINALS			SCHEMATIC
		POS. 1	POS. 2	POS. 3	POS. 1	POS. 2	POS. 3	
SP	JA01 (STD.)	ON	NONE	ON	2-3	N/A	2-1	SPDT

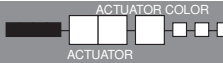
SPDT



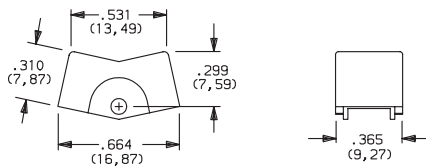
MOM. = MOMENTARY

Contact makes on opposite side actuator thrown.

ACTUATOR



J1 (STD.) ROCKER



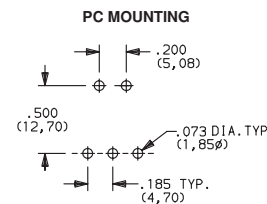
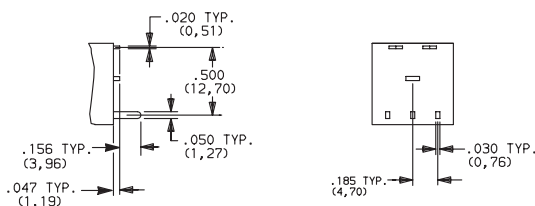
OPTION CODE	ACTUATOR COLOR
2	(STD.) BLACK
3	WHITE

NOTE: Other colors available, consult Customer Service Center.

TERMINATIONS



A (STD.) RIGHT ANGLE, PC THRU-HOLE



C&K JA Series Rocker Switches



CONTACT MATERIAL



OPTION CODE	CONTACT AND TERMINAL MATERIAL	RATINGS	
Q (STD.)	SILVER ¹	POWER	2 AMPS @ 125 V AC; 1 AMP @ 250 V AC (UL/CSA).

CONTACT MATERIAL/APPLICATION RECOMMENDATIONS – SEE SECTION N.

¹ CONTACTS & TERMINALS: Copper, silver plated.

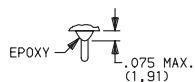
All models   with all options when ordered with 'Q' contact material.

SEAL



NONE (STD.) NO SEAL

E EPOXY SEAL



Rocker

