



Chipsmall Limited consists of a professional team with an average of over 10 year of expertise in the distribution of electronic components. Based in Hongkong, we have already established firm and mutual-benefit business relationships with customers from,Europe,America and south Asia,supplying obsolete and hard-to-find components to meet their specific needs.

With the principle of “Quality Parts,Customers Priority,Honest Operation,and Considerate Service”,our business mainly focus on the distribution of electronic components. Line cards we deal with include Microchip,ALPS,ROHM,Xilinx,Pulse,ON,Everlight and Freescale. Main products comprise IC,Modules,Potentiometer,IC Socket,Relay,Connector.Our parts cover such applications as commercial,industrial, and automotives areas.

We are looking forward to setting up business relationship with you and hope to provide you with the best service and solution. Let us make a better world for our industry!



Contact us

Tel: +86-755-8981 8866 Fax: +86-755-8427 6832

Email & Skype: info@chipsmall.com Web: www.chipsmall.com

Address: A1208, Overseas Decoration Building, #122 Zhenhua RD., Futian, Shenzhen, China



POWER DISCRETES
Description

Quick reference data

$$V_R = 200 - 1000 \text{ V}$$

$$I_o = 1.0\text{A}$$

$$t_{rr} = 2\mu\text{S}$$

$$V_F = 1.1\text{V}$$

Features

- ◆ Low reverse leakage current
- ◆ Hermetically sealed in Metoxilite fused metal oxide
- ◆ Good thermal shock resistance
- ◆ Low forward voltage drop
- ◆ Avalanche capability

These products can be supplied as JANTX levels.

Electrical Specifications

Electrical specifications @ $T_A = 25^\circ\text{C}$ unless otherwise specified.

Types	V_{RWM}	V_F	I_o		I_{FSM}	I_R	T_{RR}	T_{STG} and T_J	$R_{\theta JL}$ L=.375 inch (9.53mm)
			At: $T_J = 25^\circ\text{C}$ $I_o = 1\text{A}$	At: $T_A = +100^\circ\text{C}$ (1)(2)					
	V(pk)	V	A dc	mA dc	A(pk)	μA	μS	$^\circ\text{C}$	$^\circ\text{C/W}$
1N3611	200	1.1	1	300	30	0.5	2	-65 to +175	38
1N3612	400	1.1	1	300	30	0.5	2	-65 to +175	38
1N3613	600	1.1	1	300	30	0.5	2	-65 to +175	38
1N3614	800	1.1	1	300	30	0.5	2	-65 to +175	38
1N3957	1000	1.1	1	300	30	0.5	2	-65 to +175	38

Notes:

(1) From I_o rating is independent of heat sinking, special mounting, or leads of the device.

(2) Derate linearly at 13.3mA between $T_A = +100^\circ\text{C}$ and $T_A = +175^\circ\text{C}$

POWER DISCRETES

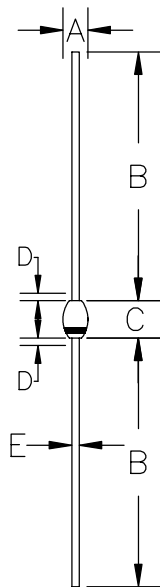
Ordering Information

Part Number	Description
1N3611 1N3612 1N3613 1N3614 1N3957	Axial leaded hermetically sealed ⁽¹⁾

Note:

(1) Available in bulk or tape and reel packaging. Please consult factory for quantities.

Outline Drawing



G2

DIM ^N	DIMENSIONS				NOTE
	MM		INCHES		
A	1.6	2.8	.065	.110	—
B	25.4	33.0	1.00	1.30	—
C	3.5	4.2	.140	.165	—
D	—	.80	—	.030	1
E	.66	.84	.026	.033	—

NOTES:

1. LEAD DIAMETER UNCONTROLLED OVER THIS REGION.

CATHODE IS DENOTED BY A BAND.

Contact Information

Semtech Corporation
Power Discrettes Products Division
200 Flynn Road, Camarillo, CA 93012
Phone: (805)498-2111 FAX (805)498-3804