



Chipsmall Limited consists of a professional team with an average of over 10 year of expertise in the distribution of electronic components. Based in Hongkong, we have already established firm and mutual-benefit business relationships with customers from,Europe,America and south Asia,supplying obsolete and hard-to-find components to meet their specific needs.

With the principle of “Quality Parts,Customers Priority,Honest Operation,and Considerate Service”,our business mainly focus on the distribution of electronic components. Line cards we deal with include Microchip,ALPS,ROHM,Xilinx,Pulse,ON,Everlight and Freescale. Main products comprise IC,Modules,Potentiometer,IC Socket,Relay,Connector.Our parts cover such applications as commercial,industrial, and automotives areas.

We are looking forward to setting up business relationship with you and hope to provide you with the best service and solution. Let us make a better world for our industry!



## Contact us

Tel: +86-755-8981 8866 Fax: +86-755-8427 6832

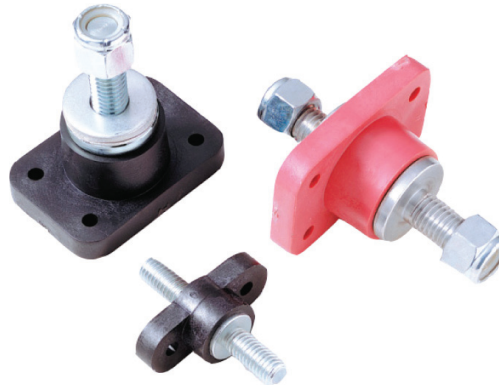
Email & Skype: info@chipsmall.com Web: www.chipsmall.com

Address: A1208, Overseas Decoration Building, #122 Zhenhua RD., Futian, Shenzhen, China



## Feed-through and standalone stud type junction blocks

RoHS



### Studs

- Non-feed-through junction blocks are plated steel
- Feed-through junction blocks are copper alloy

**Note:** Voltage rating dependent upon installation

### Suggested maximum termination ratings

Stud size/thread/	Amps
#10-32	50
#1/4-20	100
#5/16-18	200
#3/8-16	250
#1/2-20	400

### Catalog symbols:

- C19\_
- C27\_
- C29\_
- C40\_
- C58\_
- C63\_
- JB38\_

### Description:

Busmann™ series feed-through and standalone stud type junction blocks for heavy-duty ground or power connection points in AC or DC circuits.

Modular construction offers design and manufacturing flexibility with mounting options well suited for transformers, communication and computer power sections along with various vehicle electrical systems.

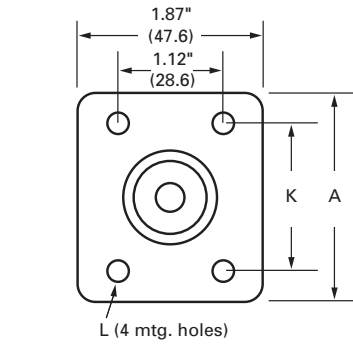
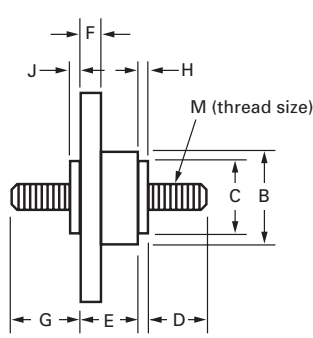


Fig. 1

(Catalog numbers C1925, C1933, C1933-1)

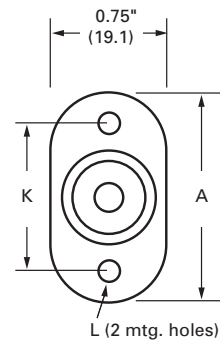


Fig. 2

(All other catalog numbers)

**Catalog numbers and dimensions – in (mm)**

Catalog no.	Fig.	A	B	C	D	E	F	G	H	J	K	L	M	Material	Color
C2791*	2	2.06 (52.4)	0.69 (17.5)	0.44 (11.2)	0.62 (15.9)	0.69 (17.5)	0.31 (7.9)	0.69 (17.5)	0.06 (1.6)	0.06 (1.6)	1.31 (33.3)	0.22 dia. w/.41 dia. C'bore x .14 deep	1/4-20	Thermoset	Black
C2909* †	2	2.06 (52.4)	0.69 (17.5)	0.44 (11.2)	0.62 (15.9)	1.0 (25.4)	0.31 (7.9)	0.69 (17.5)	0.06 (1.6)	0.06 (1.6)	1.31 (33.3)	0.22 dia. w/.41 dia. C'bore x .14 deep	10-32	Thermoset	Black
C2909-1*	2	2.06 (52.4)	0.69 (17.5)	0.44 (11.2)	0.62 (15.9)	1.0 (25.4)	0.31 (7.9)	0.69 (17.5)	0.06 (1.6)	0.06 (1.6)	1.31 (33.3)	0.22 dia. w/.41 dia. C'bore x .14 deep	1/4-20	Thermoset	Black
C1938*	2	2.06 (52.4)	0.94 (23.8)	0.69 (17.5)	0.87 (22.2)	0.69 (17.5)	0.31 (7.9)	0.87 (22.2)	0.06 (1.6)	0.06 (1.6)	1.31 (33.3)	0.22 dia. w/.41 dia. C'bore x .14 deep	3/8-16	Thermoplastic	Black
C1925* †	1	2.75 (69.8)	1.5 (38.1)	1.25 (31.7)	1.25 (31.7)	1.12 (28.6)	0.37 (9.5)	1.12 (28.6)	0.19 (4.8)	0.19 (4.8)	2.0 (50.8)	0.22 dia. w/.44 dia. C'bore x .16 deep	1/2-13	Thermoplastic	Red
C4044* †	2	2.06 (52.4)	0.87 (22.2)	0.62 (15.9)	0.62 (15.9)	1.12 (28.6)	0.31 (7.9)	0.87 (22.2)	0.06 (1.6)	0.06 (1.6)	1.31 (33.3)	0.22 dia. w/.41 dia. C'bore x .14 deep	3/8-16	Thermoplastic	Black
C5898* †	2	2.06 (52.4)	0.94 (23.8)	0.69 (17.5)	0.87 (22.2)	0.69 (17.5)	0.31 (7.9)	0.87 (22.2)	0.06 (1.6)	0.06 (1.6)	1.31 (33.3)	0.22 dia. w/.41 dia. C'bore x .14 deep	3/8-16	Thermoplastic	Red
JB3816-2	2	2.12 (54.0)	1.0 (25.4)	0.62 (15.9)	0.94 (23.8)	0.69 (17.5)	0.31 (7.9)	None	0.06 (1.6)	None	1.37 (34.9)	0.22 dia. w/.37 dia. C'bore x .14 deep	3/8-16	Thermoplastic	Black
JB3816-3	2	2.12 (54.0)	1.0 (25.4)	0.62 (15.9)	0.94 (23.8)	0.69 (17.5)	0.31 (7.9)	None	0.06 (1.6)	None	1.37 (34.9)	0.22 dia. w/.37 dia. C'bore x .14 deep	3/8-16	Thermoplastic	Red
C1933 †	1	2.75 (69.8)	1.44 (36.6)	1.25 (31.7)	1.5 (38.1)	1.12 (28.6)	0.37 (9.5)	None	0.19 (4.8)	None	2 (50.8)	0.22 dia.	1/2-13	Thermoplastic	Black
C1933-1 †	1	2.75 (69.8)	1.44 (36.3)	1.25 (31.7)	1.5 (38.1)	1.12 (28.6)	0.37 (9.5)	None	0.19 (4.8)	None	2 (50.8)	0.22 dia.	5/16-18	Thermoplastic	Black
C6344-1	2	2.12 (54.0)	0.62 (15.9)	0.62 (15.9)	0.87 (22.2)	0.69 (17.5)	0.31 (7.9)	None	0.06 (1.6)	None	1.37 (34.9)	0.22 dia. w/.37 dia. C'bore x .14 deep	1/2-20	Thermoplastic	Black

\* Feed-through options – Nuts and washers; consult factory.  
† Not RoHS compliant.

The only controlled copy of this data sheet is the electronic read-only version located on the Eaton network drive. All other copies of this document are by definition uncontrolled. This bulletin is intended to clearly present comprehensive product data and provide technical information that will help the end user with design applications. Eaton reserves the right, without notice, to change design or construction of any products and to discontinue or limit distribution of any products. Eaton also reserves the right to change or update, without notice, any technical information contained in this bulletin. Once a product has been selected, it should be tested by the user in all possible applications.

**Eaton**  
1000 Eaton Boulevard  
Cleveland, OH 44122  
Eaton.com

Bussmann Division  
114 Old State Road  
Ellisville, MO 63021  
United States  
Eaton.com/bussmannseries

© 2016 Eaton  
All Rights Reserved  
Printed in USA  
Publication No. 2070 — BU-SB98107  
December 2016

Eaton and Bussmann are valuable trademarks of Eaton in the U.S. and other countries. You are not permitted to use the Eaton trademarks without prior written consent of Eaton.

For Eaton's Bussmann series product information, call **1-855-287-7626** or visit: **Eaton.com/bussmannseries**



Follow us on social media to get the latest product and support information.

