



Chipsmall Limited consists of a professional team with an average of over 10 year of expertise in the distribution of electronic components. Based in Hongkong, we have already established firm and mutual-benefit business relationships with customers from,Europe,America and south Asia,supplying obsolete and hard-to-find components to meet their specific needs.

With the principle of “Quality Parts,Customers Priority,Honest Operation,and Considerate Service”,our business mainly focus on the distribution of electronic components. Line cards we deal with include Microchip,ALPS,ROHM,Xilinx,Pulse,ON,Everlight and Freescale. Main products comprise IC,Modules,Potentiometer,IC Socket,Relay,Connector.Our parts cover such applications as commercial,industrial, and automotives areas.

We are looking forward to setting up business relationship with you and hope to provide you with the best service and solution. Let us make a better world for our industry!



Contact us

Tel: +86-755-8981 8866 Fax: +86-755-8427 6832

Email & Skype: info@chipsmall.com Web: www.chipsmall.com

Address: A1208, Overseas Decoration Building, #122 Zhenhua RD., Futian, Shenzhen, China



MICRO SWITCH
a Honeywell Division

FED MFG. CODE 91929

ACTUATOR-SWITCH

CATALOG LISTING

JE-73

CATALOG LISTING
JE-73

PAGE 1 OF 1

REPLACES

RELEASE NO PR-5024

ISSUE
M

6

CHECK

REVISIONS

A	085 C069507
DAW	21 FEB 91
B	RE-IN PR21936
J J A	5 JAN 96
C	204294
CSL	2 NOV 01

CHECK

8 JAN 96

TSM

CHECK

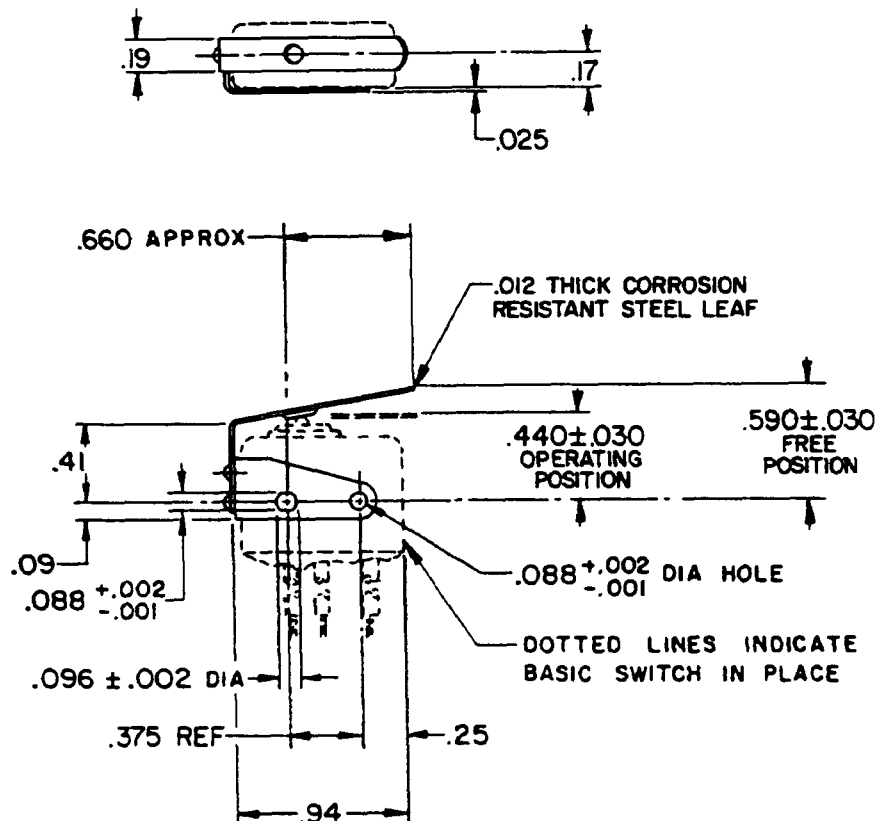
8 JAN 96

J J A

5 JAN 96

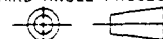
RASTER

DRAWN



THIS DRAWING COVERS A PROPRIETARY ITEM AND IS THE PROPERTY OF MICRO SWITCH A DIVISION OF HONEYWELL THIS DRAWING IS NOT TO BE COPIED OR USED WITHOUT THE APPROVAL OF MICRO SWITCH

THIRD ANGLE PROJECTION



CHARACTERISTICS

OPERATING FORCE ----- 12 OZ MAX
RELEASE FORCE ----- 2 OZ MIN
DIFFERENTIAL TRAVEL --- .025 MAX
OVERTRAVEL ----- .015 MIN

ELECTRICAL DATA

CONTACT ARRANGEMENT

SCALE FULL

DO NOT
SCALE PRINT

UNLESS OTHERWISE SPECIFIED
TOLERANCES ARE
ONE PLACE (0) ± .030
TWO PLACE (00) ± .015
THREE PLACE (000) ± .005
ANGLES ±

WEIGHT

MICRO SWITCH
a Honeywell Division

FED MFG. CODE 91929

ACTUATOR-SWITCH

CATALOG LISTING

JE-73

CATALOG LISTING
JE-73

PAGE 1 OF 1

REPLACES

RELEASE NO PR-5024

M

ISSUE
5

CHECK

REVISIONS

1	085	AC069507
2	DAW	21 FEB 91
3	RE-IN	PR21936
4	JJA	5 JAN 96

CHECK

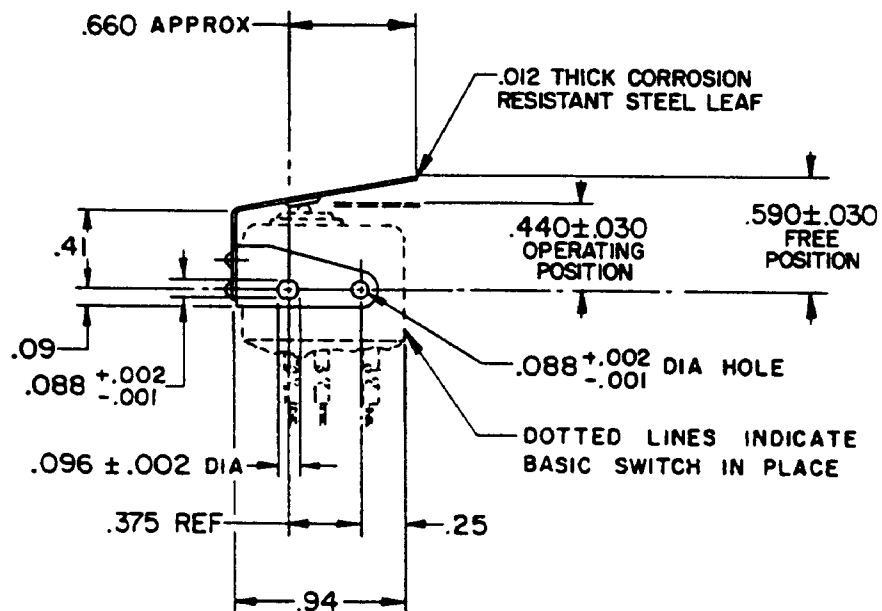
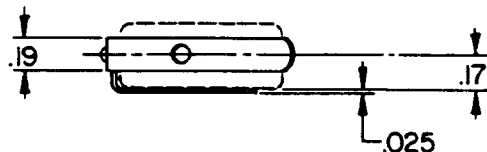
8 JAN 96

75M

CHECK

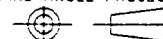
JJA 5 JAN 96

DRAWN



THIS DRAWING COVERS A PROPRIETARY ITEM AND IS THE PROPERTY OF MICRO SWITCH, A DIVISION OF HONEYWELL. THIS DRAWING IS NOT TO BE COPIED OR USED WITHOUT THE APPROVAL OF MICRO SWITCH.

THIRD ANGLE PROJECTION



CHARACTERISTICS

OPERATING FORCE ----- 12 OZ MAX
RELEASE FORCE ----- **2 OZ MIN**
DIFFERENTIAL TRAVEL ----- .025 MAX
OVERTRAVEL ----- .015 MIN

ELECTRICAL DATA

CONTACT ARRANGEMENT

SCALE FULL

DO NOT
SCALE PRINT

**UNLESS OTHERWISE SPECIFIED
TOLERANCES ARE**

ONE PLACE (0) ± .030

TWO PLACE (.00) ± .015

THREE PLACE (.000) ± .005

ANGLES ±

WEIGHT