



Chipsmall Limited consists of a professional team with an average of over 10 year of expertise in the distribution of electronic components. Based in Hongkong, we have already established firm and mutual-benefit business relationships with customers from,Europe,America and south Asia,supplying obsolete and hard-to-find components to meet their specific needs.

With the principle of “Quality Parts,Customers Priority,Honest Operation,and Considerate Service”,our business mainly focus on the distribution of electronic components. Line cards we deal with include Microchip,ALPS,ROHM,Xilinx,Pulse,ON,Everlight and Freescale. Main products comprise IC,Modules,Potentiometer,IC Socket,Relay,Connector.Our parts cover such applications as commercial,industrial, and automotives areas.

We are looking forward to setting up business relationship with you and hope to provide you with the best service and solution. Let us make a better world for our industry!



Contact us

Tel: +86-755-8981 8866 Fax: +86-755-8427 6832

Email & Skype: info@chipsmall.com Web: www.chipsmall.com

Address: A1208, Overseas Decoration Building, #122 Zhenhua RD., Futian, Shenzhen, China



THIS DRAWING IS UNPUBLISHED.

RELEASED FOR PUBLICATION

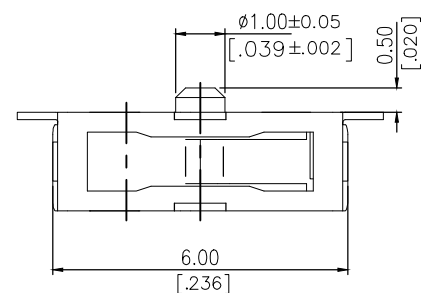


COPYRIGHT — TE Connectivity Ltd.

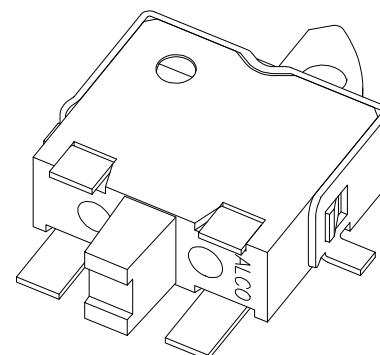
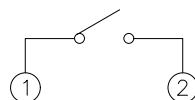
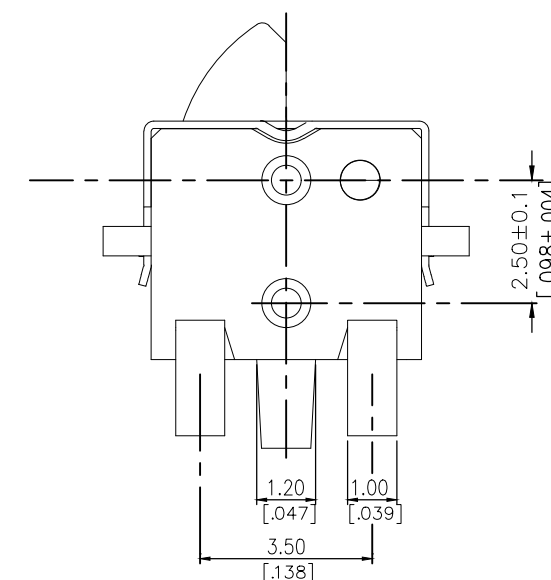
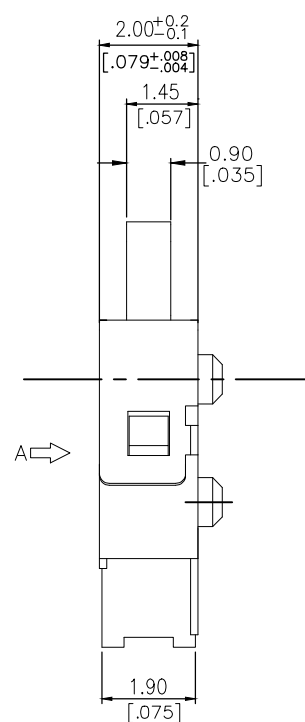
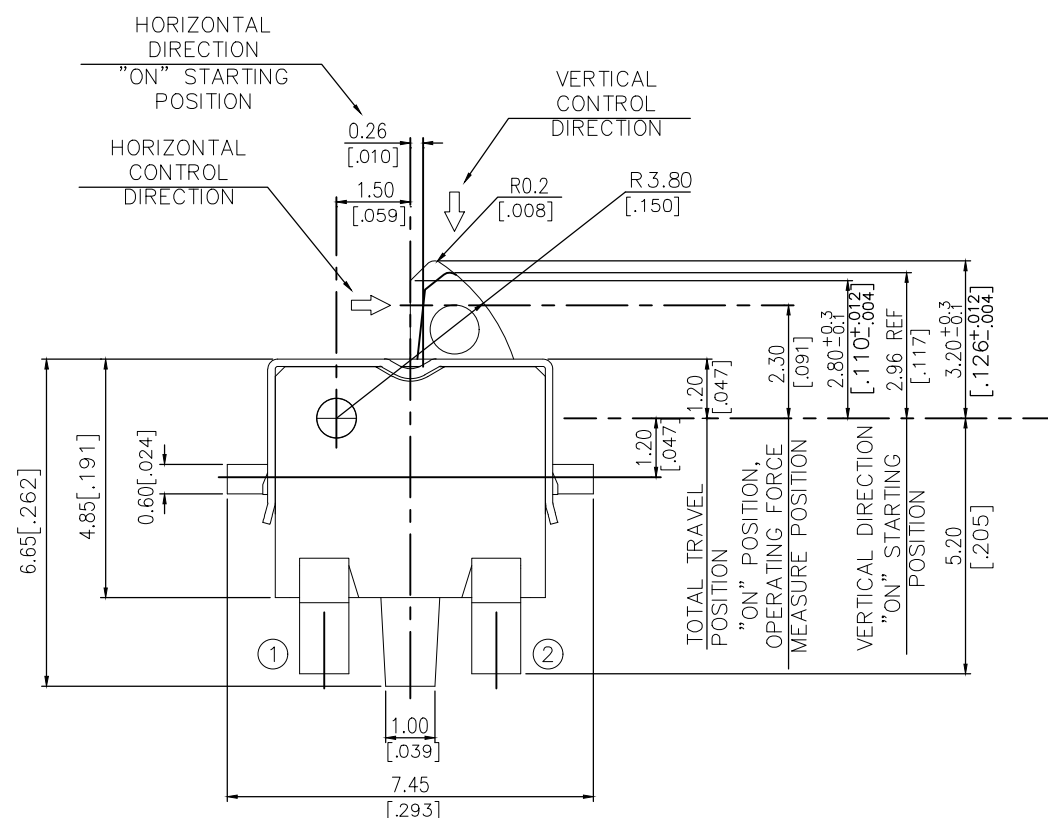
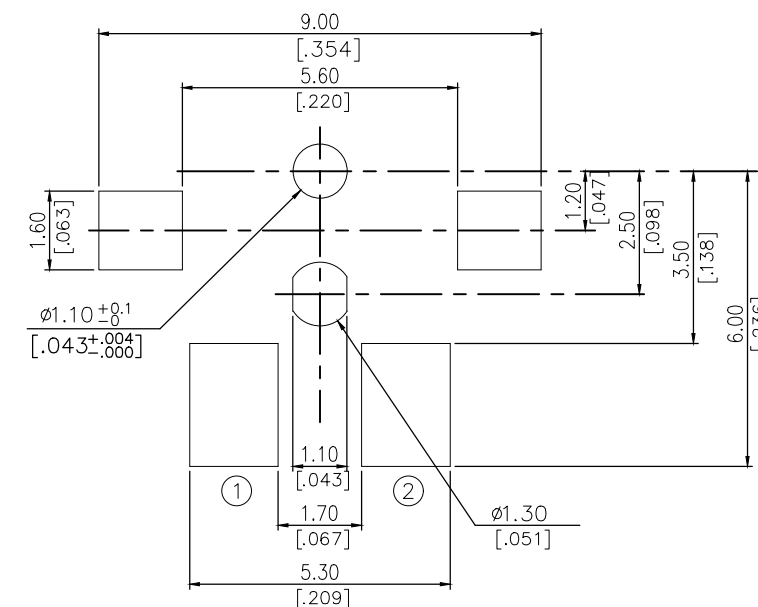
ALL RIGHTS RESERVED.

REVISIONS

P	LTR	DESCRIPTION	DATE	DWN	APVD
	A	ECR-18-012767	14AUG2018	DHC	AS

2331406-1
AS SHOWN

CIRCUIT

P.C.B LAYOUT
(VIEW FROM THE DIRECTION A)

THIS DRAWING IS A CONTROLLED DOCUMENT.

DWN GANESH C M 07MAR2018

CHK ALEXANDER SHARPE 07MAR2018

APVD ALEXANDER SHARPE 07MAR2018

PRODUCT SPEC

APPLICATION SPEC

WEIGHT

CUSTOMER DRAWING



TE Connectivity Ltd.

NAME
SWITCH, DETECTOR, JJJ SERIES, 6.0X4.85mm,
HOR, SMT, RIGHT, GROUND TERM, POSTS

SIZE CAGE CODE DRAWING NO RESTRICTED TO

A3 00779 C-2331406

SCALE NTS

SHEET 1 OF 3

REV A

THIS DRAWING IS UNPUBLISHED.	RELEASED FOR PUBLICATION
© COPYRIGHT — TE Connectivity Ltd.	ALL RIGHTS RESERVED.

REVISIONS					
P	LTR	DESCRIPTION	DATE	DWN	APVD
	—	SEE SHEET 1	—	—	—

NOTES:

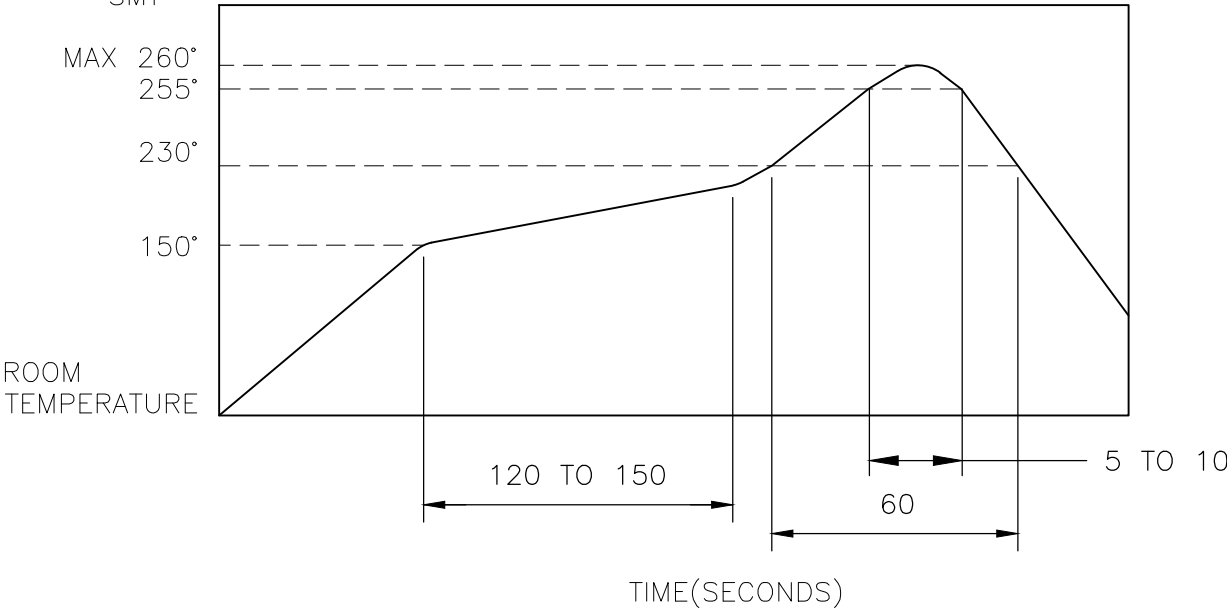
1. MATERIALS
- ACTUATOR: THERMOPLASTIC, UL 94V-0, COLOR BROWN
- BODY: THERMOPLASTIC, UL 94V-0, COLOR BLACK
- COVER: NICKEL SILVER
- TERMINAL: BRASS, SILVER PLATE
- CONTACT: STAINLESS STEEL, SILVER CLAD

2. COMPLIANCE:
- ALL MATERIALS AND FINISHES SHALL COMPLY WITH EU DIRECTIVE 2002/95/EC OF 27JAN2003(RoHS)

3. SPECIFICATIONS:
- RATING: DC 20V, 50mA
- CONTACT RESISTANCE: 1Ω MAXIMUM(INITIAL)
- INSULATION RESISTANCE: 100MΩ MINIMUM AT 100V DC
- DIELECTRIC STRENGTH: 100V AC, 1 MINUTE
- OPERATING LIFE: 100,000 CYCLES WITH LOAD
- TOTAL TRAVEL: 2.0 [.079]
- ACTUATION FORCE: 50gf MAXIMUM
- OPERATING TEMPERATURE: -10°C TO 60° C
- STORAGE TEMPERATURE: -20°C TO 70° C

4. SOLDER CONDITIONS:

SMT



THE CONDITION MENTIONED ABOVE IS THE TEMPERATURE ON THE CU FOIL OF THE PCB SURFACE. THERE ARE CASES WHERE THE BOARD’S TEMPERATURE GREATLY DIFFERS FROM THE SWITCH’S SURFACE. DO NOT ALLOW SWITCH’S SURFACE TEMPERATURE TO EXCEED 260°C

MANUAL SOLDERING

SOLDERING TEMPERATURE	MAX.350°C.
CONTINUOUS SOLDERING TIME	MAX. 5 SECONDS.

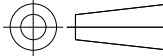
PRECAUTIONS IN HANDLING


1. CARE SHOULD BE EXERCISED SO THAT FLUX FROM THE UPPER PART OF THE PRINTED CIRCUIT BOARD DOES NOT ADHERE TO THE SWITCH.

JJJHRGG200NOPMRTR	2331406-1
SMART PART NUMBER	PART NUMBER

THIS DRAWING IS A CONTROLLED DOCUMENT.		DWN GANESH C M 07MAR2018	TE Connectivity Ltd.			
		CHK ALEXANDER SHARPE 07MAR2018				
DIMENSIONS: mm [INCHES]	TOLERANCES UNLESS OTHERWISE SPECIFIED:	APVD ALEXANDER SHARPE 07MAR2018	NAME SWITCH, DETECTOR, JJJ SERIES, 6.0X4.85mm, HOR, SMT, RIGHT, GROUND TERM, POSTS			
	0 PLC ± - 1 PLC ± - 2 PLC ± 0.20 [.008] 3 PLC ± - 4 PLC ± - ANGLES ± -	PRODUCT SPEC —	SIZE A3			
		APPLICATION SPEC —	CAGE CODE 00779			
MATERIAL —	FINISH —	WEIGHT	DRAWING NO C-2331406			
		CUSTOMER DRAWING	SCALE NTS		SHEET 2 of 3	REV A

P	LTR	DESCRIPTION	DATE	DWN	APVD
	—	SEE SHEET 1	—	—	—

DIMENSIONS: mm [INCHES]	TOLERANCES UNLESS OTHERWISE SPECIFIED:	
	0 PLC	± —
	1 PLC	± —
	2 PLC	± 0.20 [.008]
	3 PLC	± —
	4 PLC	± —
	ANGLES	± —
MATERIAL	FINISH	
—	—	

DWN GANESH C M		07MAR2018		 TE Connectivity Ltd.	
CHK ALEXANDER SHARPE		07MAR2018			
APVD ALEXANDER SHARPE		07MAR2018		NAME SWITCH, DETECTOR, JJJ SERIES, 6.0X4.85mm, HOR, SMT, RIGHT, GROUND TERM, POSTS, —	
PRODUCT SPEC —					
APPLICATION SPEC —					
WEIGHT		SIZE A3	CAGE CODE 00779	DRAWING NO C-2331406	RESTRICTED TO —
CUSTOMER DRAWING				SCALE NTS	SHEET 3 OF 3
				REV A	