



Chipsmall Limited consists of a professional team with an average of over 10 year of expertise in the distribution of electronic components. Based in Hongkong, we have already established firm and mutual-benefit business relationships with customers from,Europe,America and south Asia,supplying obsolete and hard-to-find components to meet their specific needs.

With the principle of “Quality Parts,Customers Priority,Honest Operation,and Considerate Service”,our business mainly focus on the distribution of electronic components. Line cards we deal with include Microchip,ALPS,ROHM,Xilinx,Pulse,ON,Everlight and Freescale. Main products comprise IC,Modules,Potentiometer,IC Socket,Relay,Connector.Our parts cover such applications as commercial,industrial, and automotives areas.

We are looking forward to setting up business relationship with you and hope to provide you with the best service and solution. Let us make a better world for our industry!



Contact us

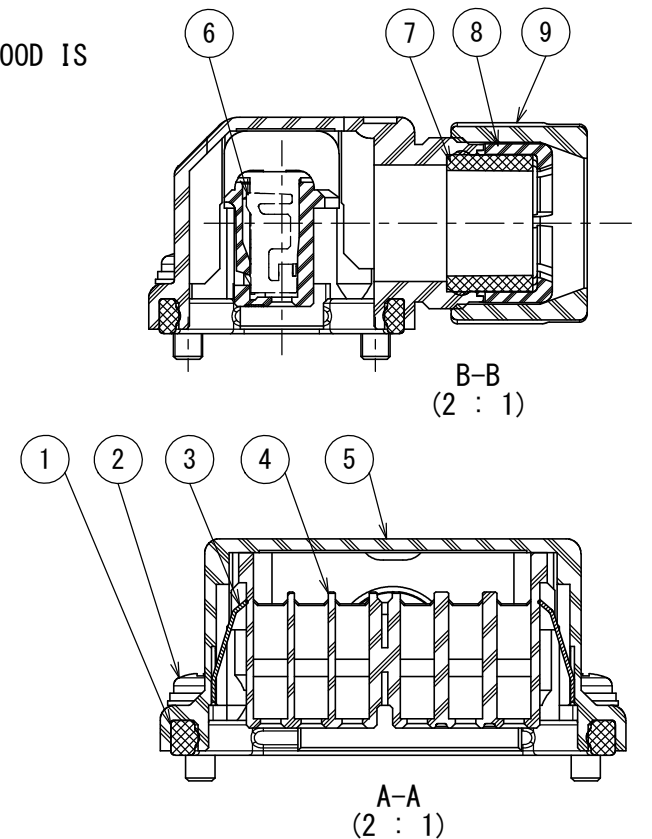
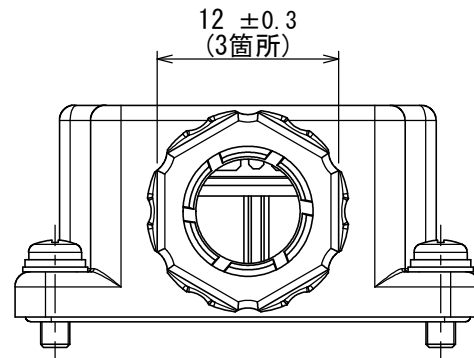
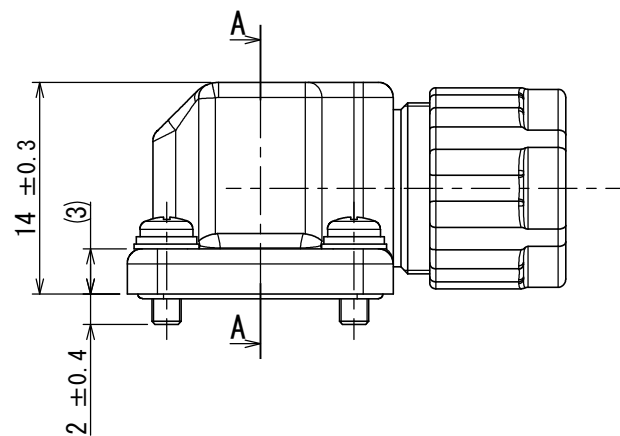
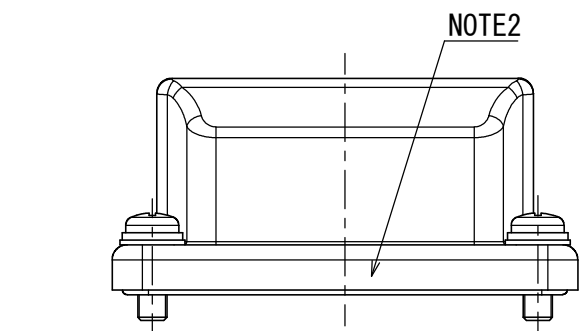
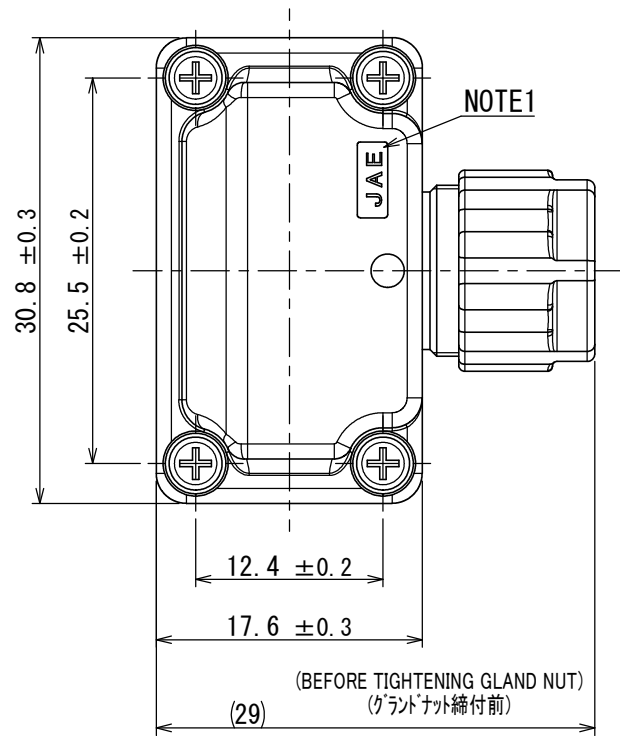
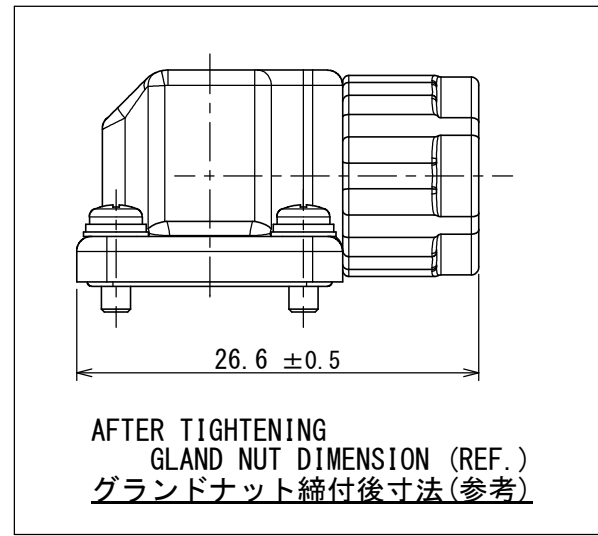
Tel: +86-755-8981 8866 Fax: +86-755-8427 6832

Email & Skype: info@chipsmall.com Web: www.chipsmall.com

Address: A1208, Overseas Decoration Building, #122 Zhenhua RD., Futian, Shenzhen, China



版数 VER.	年月日 DATE	CN NO.	変更内容 DESCRIPTION	製図 DR.	担当 CHK.	査閲 APPD.	承認 APPD.
------------	-------------	--------	---------------------	-----------	------------	-------------	-------------



- NOTE1. NO. OF CONTACTS AND THE COMPANY NAME ARE MARKED AS SHOWN IN THE DRAWING.
NOTE2. PRODUCTION LOT NUMBER ARE MARKED AS INDICATED.
NOTE3. SOCKET CONTACTS ARE SOLD SEPARATELY.
NOTE4. SOCKET INSULATOR OF WHICH DIRECTION TO HOOD IS REVERSED CAN BE ASSEMBLED.

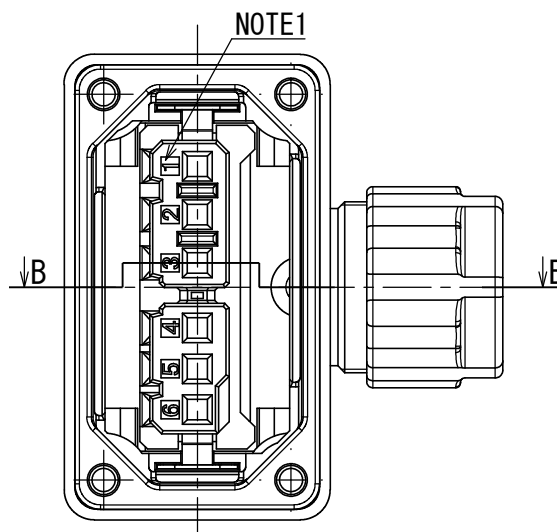
- 注1. 図示の位置に端子No. 及び社名を表示する。
注2. 図示の位置に製造ロットNo. を表示する。
注3. コンタクトは別売品である。
注4. ソケットインシュレータはフードに対し、向きを反転して組込可能。フードの取付け方向を2通り選択できる。

SPECIFICATION


RATED CURRENT : 7A MAX. /CONTACT (CONTACT No. 1~3)
3A MAX. /CONTACT (CONTACT No. 4~5)
RATED VOLTAGE : 200VAC MAX. (CONTACT No. 1~3)
(OVER VOLTAGE CATEGORY: II)
(POLLUTION DEGREE: 2)
24VDC MAX. (CONTACT No. 4~5)
(OVER VOLTAGE CATEGORY: II)
(POLLUTION DEGREE: 2)

仕様

定格電流 : 7A以下/芯(コンタクトNo. 1~3)
3A以下/芯(コンタクトNo. 4~5)
定格電圧 : 200VAC以下(コンタクトNo. 1~3)
(過電圧範疇Ⅱ、汚染度2)
24VDC以下(コンタクトNo. 4~5)
(過電圧範疇Ⅱ、汚染度2)



9	GLAND NUT	1	SYNTHETIC RESIN	—	COLOR: BLACK
8	CABLE CLAMP	1	SYNTHETIC RESIN	—	COLOR: GRAY
7	BUSHING	1	SYNTHETIC RUBBER	—	COLOR: BRICK RED
6	SOCKET CONTACT	6	COPPER ALLOY	GOLD PLATING	ITEM ORDERED SEPARATELY (NOTE3)
5	HOOD	1	SYNTHETIC RESIN	—	COLOR: BLACK
4	SOCKET INSULATOR	1	SYNTHETIC RESIN	—	COLOR: BLACK
3	SPRING	2	STAINLESS STEEL	—	—
2	CROSS RECESSED HEAD SCREWS WITH CAPTIVE WASHER	4	STAINLESS STEEL	—	—
1	GASKET	1	SYNTHETIC RUBBER	—	COLOR: BRICK RED
符号 NO.	名 称 DESCRIPTION	個 数 QTY.	材 料 MATERIAL	仕 上 FINISH	備 考 REMARKS

仕様書 (SPECIFICATION) JACS-50110 JABL-50110		第1版 (ORIGINAL DATE) 03/AUG/2015		尺度 (SCALE) 2:1	シリーズ (SERIES) JN11	日本航空電子工業株式会社  JAPAN AVIATION ELECTRONICS INDUSTRY, LTD.	図面番号 (DRAWING NO.) SJ115068	版数 (VER.) 1
		製図 DR.	—	名称 (TITLE) JN11FH06SN1 (PLUG)				
一般公差 (GENERAL TOLERANCE) 寸法 (DIMENSION)		担当 CHK.	H. NAKAJIMA			質量 (MASS) —		
角度 (ANGLES)		査閲 APPD.	T. SUZUKI					
×° ±		承認 APPD.	H. EBIHARA					
×× ±0.8								
× × ±0.4								
× × × ±0.1								
× × × × ±								
単位 (UNIT) : mm								