



Chipsmall Limited consists of a professional team with an average of over 10 year of expertise in the distribution of electronic components. Based in Hongkong, we have already established firm and mutual-benefit business relationships with customers from,Europe,America and south Asia,supplying obsolete and hard-to-find components to meet their specific needs.

With the principle of “Quality Parts,Customers Priority,Honest Operation,and Considerate Service”,our business mainly focus on the distribution of electronic components. Line cards we deal with include Microchip,ALPS,ROHM,Xilinx,Pulse,ON,Everlight and Freescale. Main products comprise IC,Modules,Potentiometer,IC Socket,Relay,Connector.Our parts cover such applications as commercial,industrial, and automotives areas.

We are looking forward to setting up business relationship with you and hope to provide you with the best service and solution. Let us make a better world for our industry!



Contact us

Tel: +86-755-8981 8866 Fax: +86-755-8427 6832

Email & Skype: info@chipsmall.com Web: www.chipsmall.com

Address: A1208, Overseas Decoration Building, #122 Zhenhua RD., Futian, Shenzhen, China



SERIES JS 1200 SWITCHES

NAVIGATION SWITCHES - MULTI-DIRECTIONAL



FEATURES & BENEFITS

- ▶ 5-position joystick switch
- ▶ Available with or without mounting bosses
- ▶ Designed for SMT applications that require navigation

APPLICATIONS/MARKETS

- ▶ Consumer electronics where user interface is needed
- ▶ Handheld instrumentation
- ▶ Navigation
- ▶ Telecommunication

SPECIFICATIONS

Contact Rating:	20mA @ 12 VDC
Life Expectancy:	200,000 actuations in any direction (X, Y, or Z)
Contact Resistance:	500mΩ
Insulation Resistance:	100MΩ
Dielectric Strength:	100 VAC
Operating Temperature:	-25°C to 70°C
Travel:	Push: 0.15 ±.01mm Tilt: .20 ±.01, (3.5+5/-1°)

MATERIALS

Actuator:	Plastic
Base:	Nylon
Cover:	Metal
Terminals:	Copper alloy, plated

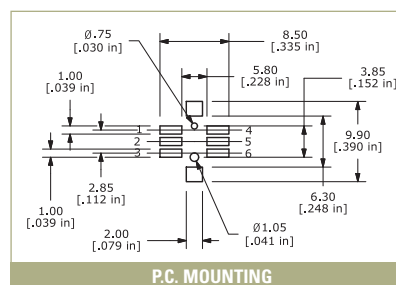
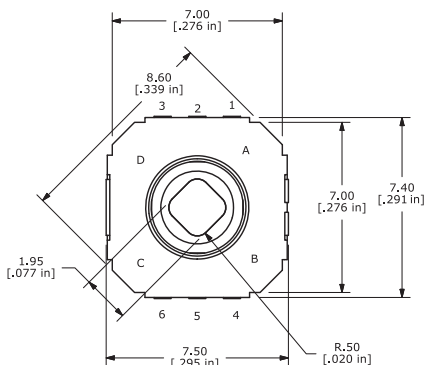
HOW TO ORDER

SERIES	MODEL NO.	ACTUATOR ("L" Dimension)	MOUNTING BOSS	CONTACT MATERIAL
JS	1200	A = 5.0mm	A = Boss B = No Boss	Q = Silver

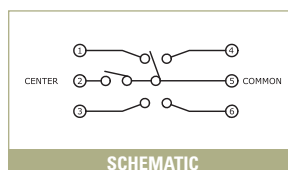
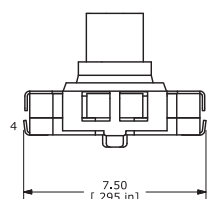
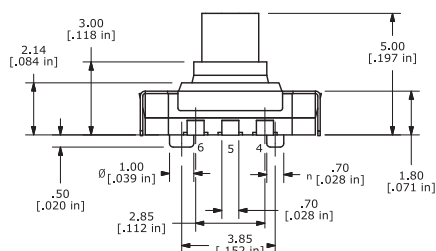
Example Ordering Number
JS-1200-A-A-Q

Specifications subject to change without notice.

JS 1200



P.C. MOUNTING



SCHEMATIC

Operating Position	Circuit
A	5 = 1
B	5 = 4
C	5 = 6
D	5 = 3
Center Push	5 = 2