



Chipsmall Limited consists of a professional team with an average of over 10 year of expertise in the distribution of electronic components. Based in Hongkong, we have already established firm and mutual-benefit business relationships with customers from,Europe,America and south Asia,supplying obsolete and hard-to-find components to meet their specific needs.

With the principle of “Quality Parts,Customers Priority,Honest Operation,and Considerate Service”,our business mainly focus on the distribution of electronic components. Line cards we deal with include Microchip,ALPS,ROHM,Xilinx,Pulse,ON,Everlight and Freescale. Main products comprise IC,Modules,Potentiometer,IC Socket,Relay,Connector.Our parts cover such applications as commercial,industrial, and automotives areas.

We are looking forward to setting up business relationship with you and hope to provide you with the best service and solution. Let us make a better world for our industry!



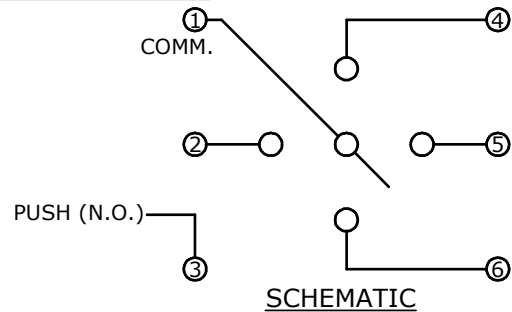
## Contact us

Tel: +86-755-8981 8866 Fax: +86-755-8427 6832

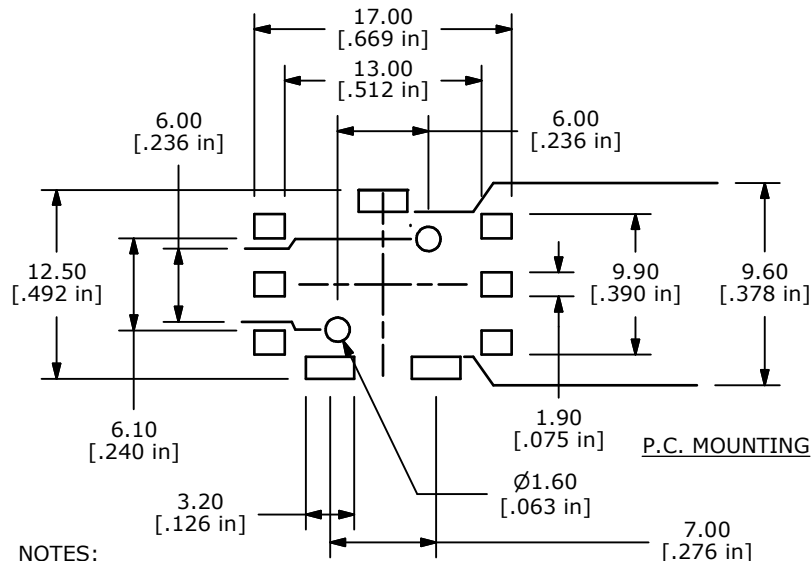
Email & Skype: [info@chipsmall.com](mailto:info@chipsmall.com) Web: [www.chipsmall.com](http://www.chipsmall.com)

Address: A1208, Overseas Decoration Building, #122 Zhenhua RD., Futian, Shenzhen, China



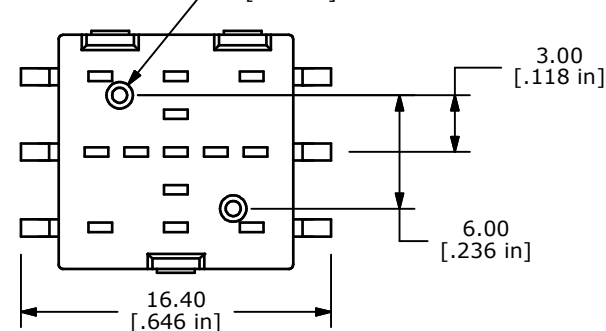
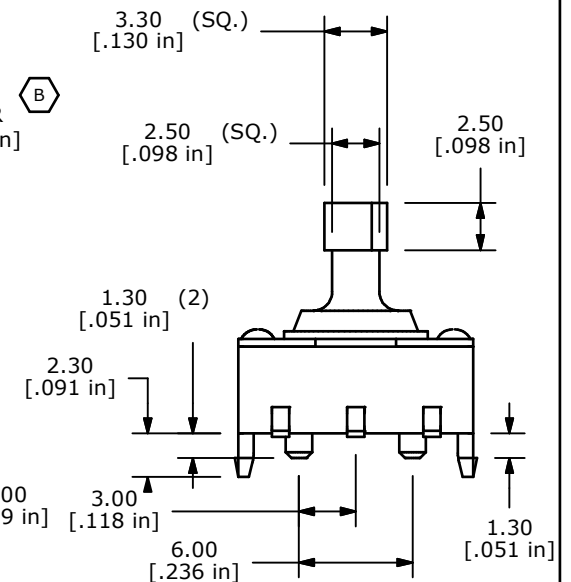
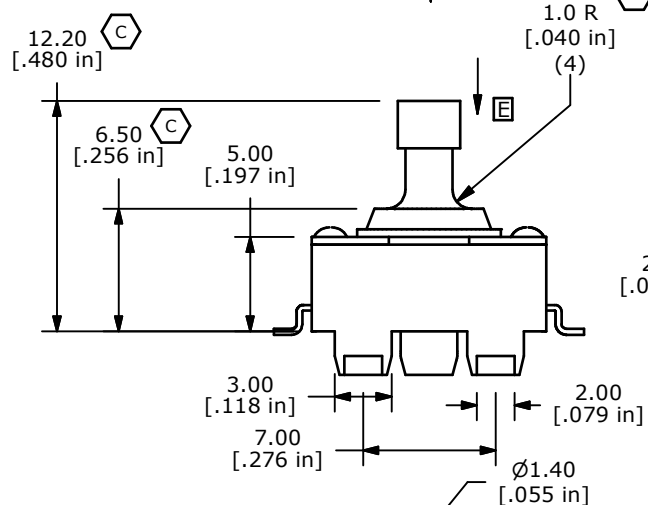
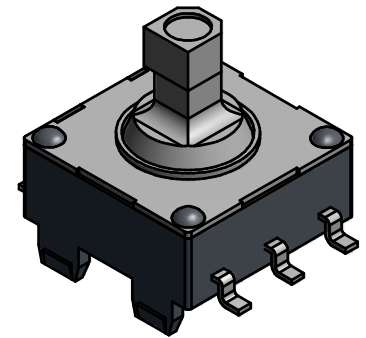
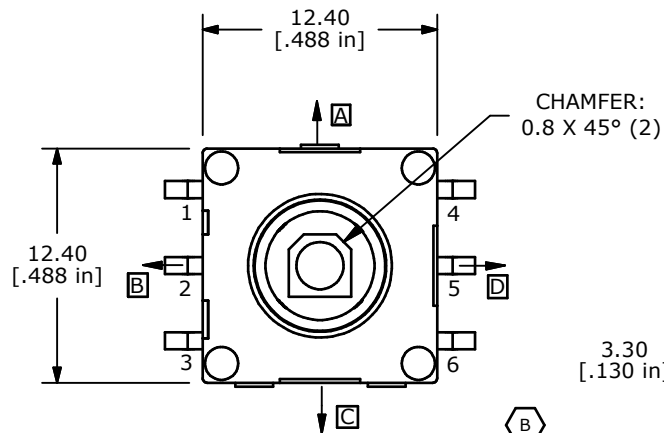


SWITCH FUNCTION	
POSITION	CONNECTED TERM. #
A	1 - 4
B	1 - 2
C	1 - 6
D	1 - 5
PUSH E	1 - 3



## NOTES:

1. ALL DIMENSIONS IN MM [INCH]
2. TERMINAL NUMBERS FOR REF. ONLY
3. TOLERANCE: X.X=±0.4 X.XX=±0.25
- ▲4. TRAVEL: LEVER 8°±2°; PUSH: 1.0mm +/- 0.2
5. RATING: 20mA @ 15 VDC
6. OPERATION FORCE: LEVER=280 +/- 100 gf; PUSH=500 +/- 150 gf
7. CONTACT RESISTANCE: 100 mΩ MAX.
8. LIFE CYCLES 100,000 CYCLES MIN.
7. ▲DENOTES CRITICAL PARAMETER
8. 2002/95/EC (ROHS) COMPLIANT
- ▲9. MADE FROM HIGH TEMPERATURE MATERIALS SUITABLE FOR REFLOW SOLDERING



D	21347	ADD HIGH TEMPERATURE MATERIAL NOTE	1/9/14	EBP
C	19723	CHANGED DIMS was 12.02 & 6.59	2/28/11	BGL
B	19120	1mm R ADDED TO ACTUATOR STEM	6/4/10	BLR
A	10243	Release For Production	6/16/99	MM
REV	PCR NO	DESCRIPTION	DATE	BY

THE INFORMATION CONTAINED IN THIS DOCUMENT IS PROPRIETARY  
TO E-SWITCH AND IS NOT TO BE COPIED OR TRANSFERRED



TITLE JS5208

SCALE 2.5 : 1

DATE 6/4/2010

DR BLR

DWG P200020

REV D