



Chipsmall Limited consists of a professional team with an average of over 10 year of expertise in the distribution of electronic components. Based in Hongkong, we have already established firm and mutual-benefit business relationships with customers from,Europe,America and south Asia,supplying obsolete and hard-to-find components to meet their specific needs.

With the principle of “Quality Parts,Customers Priority,Honest Operation,and Considerate Service”,our business mainly focus on the distribution of electronic components. Line cards we deal with include Microchip,ALPS,ROHM,Xilinx,Pulse,ON,Everlight and Freescale. Main products comprise IC,Modules,Potentiometer,IC Socket,Relay,Connector.Our parts cover such applications as commercial,industrial, and automotives areas.

We are looking forward to setting up business relationship with you and hope to provide you with the best service and solution. Let us make a better world for our industry!



## Contact us

Tel: +86-755-8981 8866 Fax: +86-755-8427 6832

Email & Skype: info@chipsmall.com Web: www.chipsmall.com

Address: A1208, Overseas Decoration Building, #122 Zhenhua RD., Futian, Shenzhen, China



## JTF Series



- High Power Density
- Wide 4:1 Input Range
- Operating Temperature  $-40^{\circ}\text{C}$  to  $+105^{\circ}\text{C}$
- Single & Dual Outputs
- Standard Remote On/Off
- 1600 VDC Isolation
- 3 Year Warranty

## Specification

## Input

Input Voltage Range	<ul style="list-style-type: none"> <li>• 24 V (9-36 VDC)</li> <li>• 48 V (18-75 VDC)</li> </ul>
Input Current	<ul style="list-style-type: none"> <li>• See table</li> </ul>
Input Filter	<ul style="list-style-type: none"> <li>• Pi network</li> </ul>
Input Reflected Ripple Current	<ul style="list-style-type: none"> <li>• 20 mA pk-pk through 12 <math>\mu\text{H}</math> inductor and 47 <math>\mu\text{F}</math> capacitor, 5 Hz to 20 MHz</li> </ul>
Input Surge	<ul style="list-style-type: none"> <li>• 24 V models: 50 VDC for 100 ms (1 second for 12 W versions)</li> <li>• 48 V models: 100 VDC for 100 ms (1 second for 12 W versions)</li> </ul>

## Output

Output Voltage	<ul style="list-style-type: none"> <li>• See table</li> </ul>
Minimum Load	<ul style="list-style-type: none"> <li>• No minimum load required</li> </ul>
Initial Set Accuracy	<ul style="list-style-type: none"> <li>• <math>\pm 1.0\%</math> max for JTF15, <math>\pm 1.2\%</math> for others</li> </ul>
Start Up Delay	<ul style="list-style-type: none"> <li>• 20 ms typical</li> </ul>
Line Regulation	<ul style="list-style-type: none"> <li>• <math>\pm 0.2\%</math> max single, <math>\pm 0.5\%</math> dual</li> </ul>
Load Regulation	<ul style="list-style-type: none"> <li>• <math>\pm 0.5\%</math> max single, <math>\pm 1.0\%</math> max dual</li> </ul>
Cross Regulation	<ul style="list-style-type: none"> <li>• <math>\pm 5\%</math> on dual output models (see note 2)</li> </ul>
Transient Response	<ul style="list-style-type: none"> <li>• <math>&lt; 3\%</math> max deviation, recovery to within 1% in 250 <math>\mu\text{s}</math> for a 25% load change</li> </ul>
Ripple & Noise	<ul style="list-style-type: none"> <li>• 85 mV pk-pk, 20 MHz bandwidth for JTF08, JTF10 and JTF12, 60 mV pk-pk 20 MHz bandwidth for JTF15 (see note 3)</li> </ul>
Overload Protection	<ul style="list-style-type: none"> <li>• 150% of full load typical for JTF08 &amp; JTF15, 170% of full load typical for JTF10 &amp; JTF12</li> </ul>
Overvoltage Protection	<ul style="list-style-type: none"> <li>• 3.3 V models: 3.9 V typical</li> <li>• 5 V models: 6.2 V typical</li> <li>• 12 V models: 15 V typical</li> <li>• 15 V models: 18 V typical</li> <li>• <math>\pm 5</math> V models: <math>\pm 6.2</math> V typical</li> <li>• <math>\pm 12</math> V models: <math>\pm 15</math> V typical</li> <li>• <math>\pm 15</math> V models: <math>\pm 18</math> V typical</li> </ul>
Short Circuit Protection	<ul style="list-style-type: none"> <li>• Trip &amp; restart (hiccup) with auto recovery</li> </ul>
Maximum Capacitive Load	<ul style="list-style-type: none"> <li>• See table</li> </ul>
Temperature Coefficient	<ul style="list-style-type: none"> <li>• <math>\pm 0.02/^{\circ}\text{C}</math> max</li> </ul>
Remote On/Off	<ul style="list-style-type: none"> <li>• On: 3 to 12 VDC or open circuit</li> <li>• Off: <math>&lt; 1.2</math> VDC or short circuit pins 1, 2 &amp; 3</li> </ul>

## General

Efficiency	<ul style="list-style-type: none"> <li>• See tables</li> </ul>
Isolation	<ul style="list-style-type: none"> <li>• 1600 VDC Input to Output</li> <li>• 1600 VDC Input to Case</li> <li>• 1600 VDC Output to Case</li> </ul>
Isolation Capacitance	<ul style="list-style-type: none"> <li>• 2000 pF max for JTF15, 1500 pF max for others</li> </ul>
Switching Frequency	<ul style="list-style-type: none"> <li>• 330 kHz typical for JTF15, 270 kHz typical for others</li> </ul>
Power Density	<ul style="list-style-type: none"> <li>• JTF08: 20 W/in<sup>3</sup>, JTF10: 25 W/in<sup>3</sup>, JTF12: 30 W/in<sup>3</sup>, JTF15: 37.5 W/in<sup>3</sup>,</li> </ul>
MTBF	<ul style="list-style-type: none"> <li>• <math>&gt; 1</math> Mhrs to MIL-HDBK-217F at 25 <math>^{\circ}\text{C}</math>, GB</li> </ul>

## Environmental

Operating Temperature	<ul style="list-style-type: none"> <li>• <math>-40^{\circ}\text{C}</math> to <math>+105^{\circ}\text{C}</math>, derate from 100% load at <math>+60^{\circ}\text{C}</math> to no load at <math>+105^{\circ}\text{C}</math> for 10 W, 12 W and 15 W versions and from 100% load at <math>70^{\circ}\text{C}</math> to no load at <math>105^{\circ}\text{C}</math> for 8 W version</li> </ul>
Case Temperature	<ul style="list-style-type: none"> <li>• <math>+105^{\circ}\text{C}</math> max</li> </ul>
Storage Temperature	<ul style="list-style-type: none"> <li>• <math>-40^{\circ}\text{C}</math> to <math>+125^{\circ}\text{C}</math></li> </ul>
Humidity	<ul style="list-style-type: none"> <li>• Up to 90%, non-condensing</li> </ul>
Cooling	<ul style="list-style-type: none"> <li>• Natural convection</li> </ul>

## EMC

Emissions	<ul style="list-style-type: none"> <li>• EN55022 class A conducted with external components - see application note</li> </ul>
ESD Immunity	<ul style="list-style-type: none"> <li>• EN61000-4-2, level 3, Perf Criteria B</li> </ul>
Radiated Immunity	<ul style="list-style-type: none"> <li>• EN61000-4-3, 10 V/m Perf Criteria A</li> </ul>
EFT/Burst	<ul style="list-style-type: none"> <li>• EN61000-4-4, level 3 Perf Criteria B*</li> </ul>
Surge	<ul style="list-style-type: none"> <li>• EN61000-4-5, level 2 Perf Criteria B*</li> </ul>
Conducted Immunity	<ul style="list-style-type: none"> <li>• EN61000-4-6, 10 Vrms Perf Criteria A*</li> </ul>
Magnetic Field	<ul style="list-style-type: none"> <li>• EN61000-4-8, 1 A/m Perf Criteria A</li> </ul>

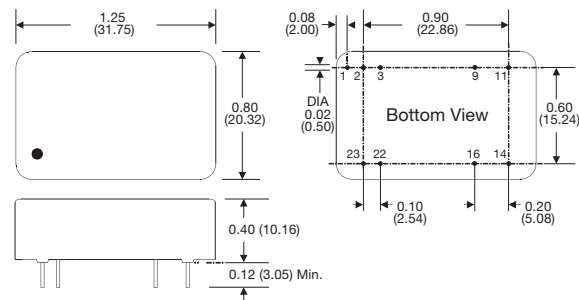
\* External input capacitor required, 330  $\mu\text{F}/100$  V.

Input Voltage	Output Voltage	Output Current	Input Current <sup>(1)</sup>		Max. Capacitive Load	Efficiency	Model Number
			No Load	Full Load			
9-36 V	3.3 V	2.0 A	10 mA	335 mA	1330 µF	83%	JTF0824S3V3
	5.0 V	1.5 A	10 mA	365 mA	1330 µF	86%	JTF0824S05
	12.0 V	0.665 A	15 mA	385 mA	288 µF	87%	JTF0824S12
	15.0 V	0.535 A	15 mA	385 mA	200 µF	87%	JTF0824S15
	±5.0 V	±0.8 A	10 mA	400 mA	±900 µF	84%	JTF0824D05
	±12.0 V	±0.335 A	15 mA	390 mA	±133 µF	86%	JTF0824D12
	±15.0 V	±0.265 A	10 mA	385 mA	±90 µF	87%	JTF0824D15
18-75 V	3.3 V	2.0 A	10 mA	170 mA	1330 µF	82%	JTF0848S3V3
	5.0 V	1.5 A	10 mA	185 mA	1330 µF	86%	JTF0848S05
	12.0 V	0.665 A	10 mA	195 mA	288 µF	87%	JTF0848S12
	15.0 V	0.535 A	10 mA	195 mA	200 µF	87%	JTF0848S15
	±5.0 V	±0.8 A	10 mA	200 mA	±900 µF	84%	JTF0848D05
	±12.0 V	±0.335 A	10 mA	195 mA	±133 µF	87%	JTF0848D12
	±15.0 V	±0.265 A	10 mA	195 mA	±90 µF	87%	JTF0848D15
9-36 V	3.3 V	2.7 A	15 mA	440 mA	1330 µF	85%	JTF1024S3V3
	5.0 V	2.0 A	15 mA	475 mA	1330 µF	87%	JTF1024S05
	12.0 V	0.833 A	15 mA	475 mA	288 µF	88%	JTF1024S12
	15.0 V	0.667 A	15 mA	480 mA	200 µF	88%	JTF1024S15
	±5.0 V	±1.0 A	15 mA	495 mA	±900 µF	85%	JTF1024D05
	±12.0 V	±0.417 A	15 mA	480 mA	±133 µF	87%	JTF1024D12
	±15.0 V	±0.33 A	15 mA	480 mA	±90 µF	87%	JTF1024D15
18-75 V	3.3 V	2.7 A	15 mA	225 mA	1330 µF	84%	JTF1048S3V3
	5.0 V	2.0 A	15 mA	240 mA	1330 µF	87%	JTF1048S05
	12.0 V	0.833 A	15 mA	240 mA	288 µF	87%	JTF1048S12
	15.0 V	0.667 A	15 mA	240 mA	200 µF	87%	JTF1048S15
	±5.0 V	±1.0 A	15 mA	250 mA	±900 µF	85%	JTF1048D05
	±12.0 V	±0.417 A	15 mA	245 mA	±133 µF	88%	JTF1048D12
	±15.0 V	±0.33 A	15 mA	240 mA	±90 µF	88%	JTF1048D15
9-36 V	3.3 V	3.5 A	15 mA	573 mA	2000 µF	87%	JTF1224S3V3
	5.0 V	2.4 A	15 mA	581 mA	2000 µF	89%	JTF1224S05
	12.0 V	1.0 A	15 mA	574 mA	430 µF	90%	JTF1224S12
	15.0 V	0.8 A	15 mA	574 mA	300 µF	90%	JTF1224S15
	±5.0 V	±1.2 A	15 mA	595 mA	±1250 µF	87%	JTF1224D05
	±12.0 V	±0.5 A	15 mA	574 mA	±200 µF	90%	JTF1224D12
	±15.0 V	±0.4 A	15 mA	574 mA	±120 µF	90%	JTF1224D15
18-75 V	3.3 V	3.5 A	15 mA	286 mA	2000 µF	87%	JTF1248S3V3
	5.0 V	2.4 A	15 mA	290 mA	2000 µF	89%	JTF1248S05
	12.0 V	1.0 A	15 mA	287 mA	430 µF	90%	JTF1248S12
	15.0 V	0.8 A	15 mA	287 mA	300 µF	90%	JTF1248S15
	±5.0 V	±1.2 A	15 mA	297 mA	±1250 µF	87%	JTF1248D05
	±12.0 V	±0.5 A	15 mA	287 mA	±200 µF	90%	JTF1248D12
	±15.0 V	±0.4 A	15 mA	287 mA	±120 µF	90%	JTF1248D15
9-36 V	3.3 V	4.0 A	10 mA	647 mA	4700 µF	87%	JTF1524S3V3
	5.1 V	3.0 A	10 mA	732 mA	3300 µF	89%	JTF1524S05
	12.0 V	1.25 A	10 mA	710 mA	600 µF	90%	JTF1524S12
	15.0 V	1.0 A	10 mA	710 mA	400 µF	90%	JTF1524S15
	±5.0 V	±1.5 A	10 mA	744 mA	±1500 µF	86%	JTF1524D05
	±12.0 V	±0.625 A	10 mA	718 mA	±288 µF	89%	JTF1524D12
	±15.0 V	±0.5 A	10 mA	710 mA	±200 µF	90%	JTF1524D15
18-75 V	3.3 V	4.0 A	5 mA	327 mA	4700 µF	86%	JTF1548S3V3
	5.1 V	3.0 A	5 mA	370 mA	3300 µF	88%	JTF1548S05
	12.0 V	1.25 A	5 mA	355 mA	600 µF	90%	JTF1548S12
	15.0 V	1.0 A	5 mA	359 mA	400 µF	89%	JTF1548S15
	±5.0 V	±1.5 A	5 mA	372 mA	±1500 µF	86%	JTF1548D05
	±12.0 V	±0.625 A	5 mA	359 mA	±288 µF	89%	JTF1548D12
	±15.0 V	±0.5 A	5 mA	355 mA	±200 µF	90%	JTF1548D15

**Notes**

1. Input current measured at nominal 24 V and 48 V input.
2. When one output is set to 100% load & the other varies between 25% & 100% load.
3. Measured with 1 µF ceramic capacitor across output rails.

**Mechanical Details**



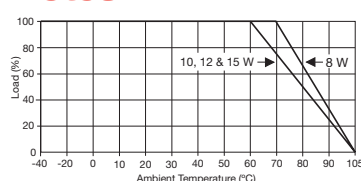
**Notes**

1. All dimensions are in inches (mm)
2. Weight: 0.04 lbs (18 g).
3. Pin diameter: 0.02 ±0.002 (0.5 ±0.05)
4. Pin pitch tolerance: ±0.014 (±0.35)
5. Case tolerance: ±0.02 (±0.5)
6. Package: 24 pin DIL nickel-coated copper.

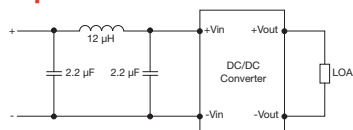
Pin	Pin Connections	
	Single	Dual
1	Remote On/Off	Remote On/Off
2	-Vin	-Vin
3	-Vin	-Vin
9	No Pin	Common
11	Not Connected	-Vout
14	+Vout	+Vout
16	-Vout	Common
22	+Vin	+Vin
23	+Vin	+Vin

**Application Notes**

**Derating Curve**



**Input Filter**



**Remote On/Off**

Standard ROF logic is positive  
 Output On: 3 to 12 VDC or open circuit  
 Output Off: <1.2 VDC or short circuit pins 1, 2 & 3