



Chipsmall Limited consists of a professional team with an average of over 10 year of expertise in the distribution of electronic components. Based in Hongkong, we have already established firm and mutual-benefit business relationships with customers from,Europe,America and south Asia,supplying obsolete and hard-to-find components to meet their specific needs.

With the principle of “Quality Parts,Customers Priority,Honest Operation,and Considerate Service”,our business mainly focus on the distribution of electronic components. Line cards we deal with include Microchip,ALPS,ROHM,Xilinx,Pulse,ON,Everlight and Freescale. Main products comprise IC,Modules,Potentiometer,IC Socket,Relay,Connector.Our parts cover such applications as commercial,industrial, and automotives areas.

We are looking forward to setting up business relationship with you and hope to provide you with the best service and solution. Let us make a better world for our industry!



Contact us

Tel: +86-755-8981 8866 Fax: +86-755-8427 6832

Email & Skype: info@chipsmall.com Web: www.chipsmall.com

Address: A1208, Overseas Decoration Building, #122 Zhenhua RD., Futian, Shenzhen, China



MICRO SWITCHFREEPORT ILLINOIS U S A
A DIVISION OF HONEYWELL

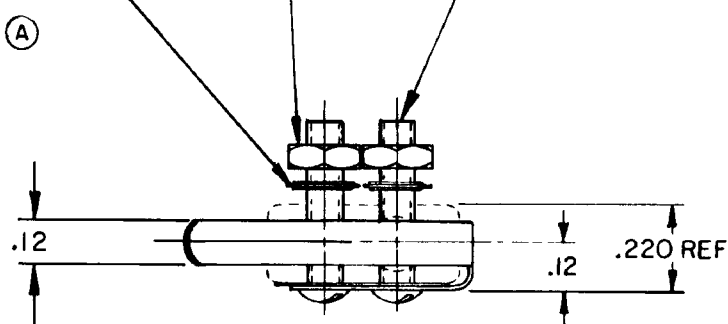
FED. MFG CODE 91929

ACTUATOR - SWITCH

CATALOG LISTING

JX-95

2-56 UNC CORROSION RESISTANT

STEEL HEX NUT (2) $\triangle 1$ CORROSION RESISTANT
STEEL LOCKWASHER (2) $\triangle 1$ 2-56 UNC X .438 REF CORROSION RESISTANT
STEEL ROUND HEAD MACHINE SCREW (2) $\triangle 1$ .485 REF
FREE
POSITION.295 ± .030
OPERATING
POSITION $\triangle 2$.09
.20FLEXIBLE INSULATOR $\triangle 1$

.188 REF

.187

.527 REF

CORROSION RESISTANT STEEL
ACTUATOR (TYPE 301)

.010 REF

DOTTED LINES INDICATE
BASIC SWITCH IN PLACE

NOTE -

 $\triangle 1$

FURNISHED UNASSEMBLED

 $\triangle 2$ SLIGHT ROTATION BETWEEN BASIC AND ACTUATOR MAY
BE NECESSARY TO OBTAIN OPERATING POSITION $\triangle A$

3 - ACTUATOR WILL WITHSTAND TEMPERATURE OF 400° F

THIS DRAWING COVERS A PROPRIETARY ITEM AND IS THE PROPERTY OF MICRO SWITCH, A DIVISION OF
HONEYWELL THIS DRAWING IS NOT TO BE COPIED OR USED WITHOUT THE APPROVAL OF MICRO SWITCH**CHARACTERISTICS WITH 48XI-T BASIC
SWITCH INSTALLED**

OPERATING FORCE ----- 7 OZ MAX

RELEASE FORCE ----- 2 OZ MIN

DIFFERENTIAL TRAVEL --- .025 MAX

OVERTRAVEL ----- .015 MIN

ELECTRICAL DATA

CONTACT ARRANGEMENT

SCALE 2 TO 1

DO NOT SCALE PRINT

UNLESS OTHERWISE
NOTED

DIMENSIONS ARE IN INCHES

TOLERANCES ARE:

ONE PLACE	(.0)	±.030
TWO PLACE	(.00)	±.015
THREE PLACE	(.000)	±.005
ANGLES		±

WEIGHT

REPLACES

RELEASE NO. PR-1979

CHECK

CHECK

CHECK

DRAWN

L S D

14 JUL 71

FO-50378-1A

REVISIONS

A	CO 29417
OMW	15 NOV 71
B	CO79303
DLT	9 MAR 95
C	CO82929
DLT	13 MAY 96

JUL 71

JUL 71

JUL 71

JUL 71

JUL 71

JUL 71

JUL 71

JUL 71

JUL 71

JUL 71

JUL 71

JUL 71

JUL 71

JUL 71

JUL 71

JUL 71

JUL 71

JUL 71

JUL 71

JUL 71

JUL 71

JUL 71

JUL 71