



Chipsmall Limited consists of a professional team with an average of over 10 year of expertise in the distribution of electronic components. Based in Hongkong, we have already established firm and mutual-benefit business relationships with customers from,Europe,America and south Asia,supplying obsolete and hard-to-find components to meet their specific needs.

With the principle of “Quality Parts,Customers Priority,Honest Operation,and Considerate Service”,our business mainly focus on the distribution of electronic components. Line cards we deal with include Microchip,ALPS,ROHM,Xilinx,Pulse,ON,Everlight and Freescale. Main products comprise IC,Modules,Potentiometer,IC Socket,Relay,Connector.Our parts cover such applications as commercial,industrial, and automotives areas.

We are looking forward to setting up business relationship with you and hope to provide you with the best service and solution. Let us make a better world for our industry!



Contact us

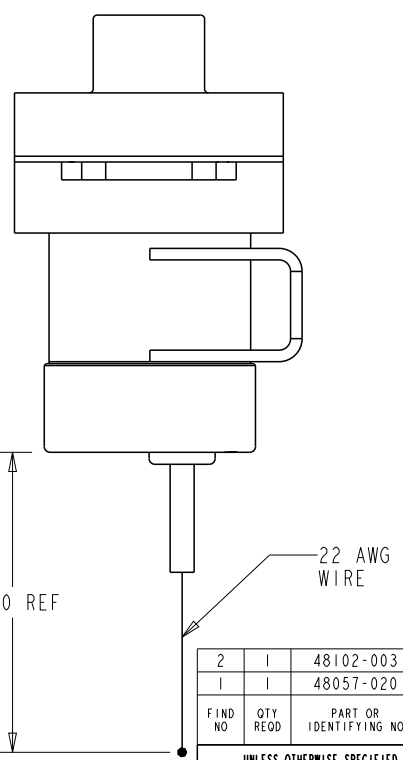
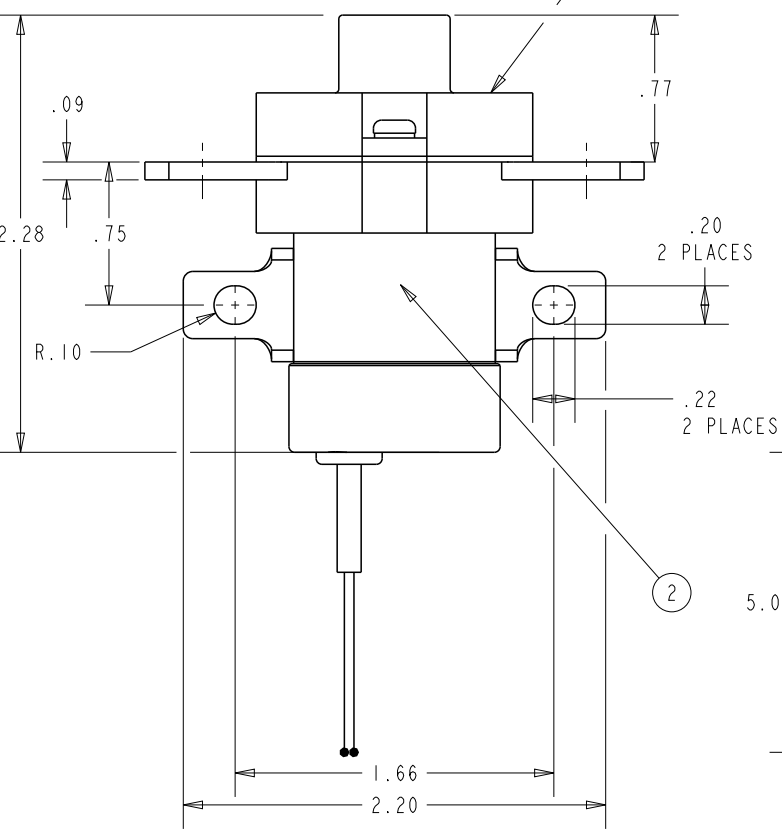
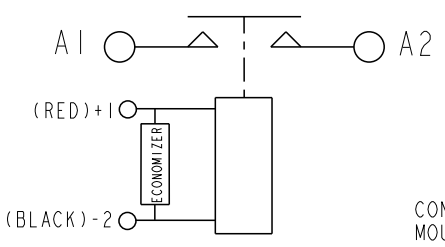
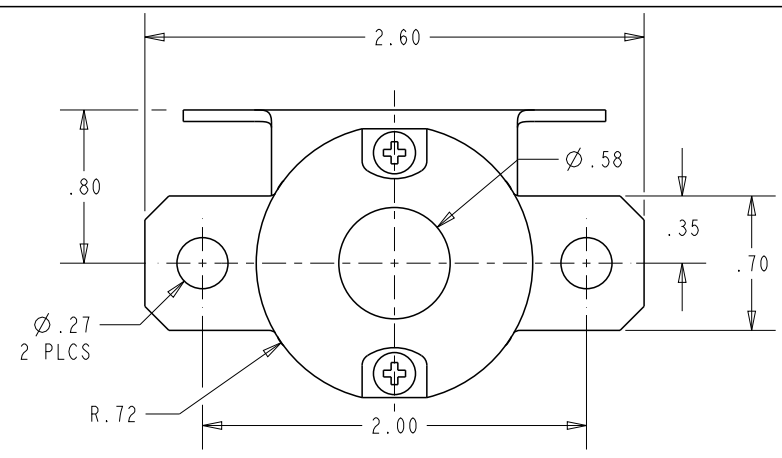
Tel: +86-755-8981 8866 Fax: +86-755-8427 6832

Email & Skype: info@chipsmall.com Web: www.chipsmall.com

Address: A1208, Overseas Decoration Building, #122 Zhenhua RD., Futian, Shenzhen, China



REVISIONS		RELEASED	APPROVED
REV.	DESCRIPTION	DATE	
A	RELEASED TO PRODUCTION	11-03-04	CB
B	11-012711 UPDATED VIEW OF WIRING HARNESS	11-06-06	CB
C	11-020414 WEIGHT WAS .31 LBS MAX	11-09-08	CB



CONSTRUCTION MOUNTING STYLE: GASKET SEALED CHASSIS MOUNT

MAIN CONTACTS CONFIGURATION: SPST N.O. DOUBLE MAKE

VOLTAGE: 28 VDC

CURRENT: 200 AMPS, 1200 AMPS, 2000 AMPS

RESISTIVE MOTORLOAD RUPTURE

COIL DATA: DUTY CYCLE: CONTINUOUS (ECONOMIZED)

NOM. OPERATE VOLTAGE: 28 VDC

PICKUP VOLTAGE: 18 VDC MAX

DROP VOLTAGE: 1-9 VDC

PICKUP TIME: 15 mS

DROPOUT TIME: 15 mS

COIL CURRENT: 5 AMPS MAX AT 28 VDC & 25°C

INRUSH HOLDING SUPPRESSION: 300 mA MAX AT 28 VDC & 25°C

±45 VDC

ENVIRONMENTAL DATA: TEMPERATURE: -55°C TO +85°C

ALTITUDE: 50,000 FEET

LIFE ELECTRICAL: 50,000 CYCLES MIN.

LIFE MECHANICAL: 100,000 CYCLES MIN.

WEIGHT: .33 LBS MAX

2	1	48102-003	NAME PLATE			8-1616974-4	
1	1	48057-020	PRIMARY ASSEMBLY - K200A1C			2-1616971-0	
FIND NO	QTY RECD	PART OR IDENTIFYING NO	NOMENCLATURE OR DESCRIPTION	DRAWING OR SPECIFICATION	FSCM NO	TE PART NO	MATERIAL OR NOTE

UNLESS OTHERWISE SPECIFIED DIMENSIONS ARE IN INCHES TOLERANCES ON

2 PL DEC.	.13 PL DEC.	ANGLES
±.06	±.010	± 1°

DR BY: KL 08-02-04
 CHK BY: CB 11-03-10
 ENGR: RSS 11-03-10
 MFG: BH 11-03-10

SIZE: A CODE IDENT: 74063

SCALE 1:1 SHEET 1 OF 1

STC
 Harman Division 175 N. DIAMOND STREET MANSFIELD, OHIO 44902

CONTACTOR-SPST NO DB
 200 AMP, 28 VDC

DWG NO. K200A1C

REF TE PN 5-1616970-9