



Chipsmall Limited consists of a professional team with an average of over 10 year of expertise in the distribution of electronic components. Based in Hongkong, we have already established firm and mutual-benefit business relationships with customers from,Europe,America and south Asia,supplying obsolete and hard-to-find components to meet their specific needs.

With the principle of “Quality Parts,Customers Priority,Honest Operation,and Considerate Service”,our business mainly focus on the distribution of electronic components. Line cards we deal with include Microchip,ALPS,ROHM,Xilinx,Pulse,ON,Everlight and Freescale. Main products comprise IC,Modules,Potentiometer,IC Socket,Relay,Connector.Our parts cover such applications as commercial,industrial, and automotives areas.

We are looking forward to setting up business relationship with you and hope to provide you with the best service and solution. Let us make a better world for our industry!



Contact us

Tel: +86-755-8981 8866 Fax: +86-755-8427 6832

Email & Skype: info@chipsmall.com Web: www.chipsmall.com

Address: A1208, Overseas Decoration Building, #122 Zhenhua RD., Futian, Shenzhen, China



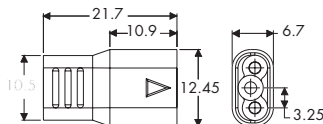
HIGH CURRENT CABLE CONNECTORS

A choice of 2 and 3 way high reliability Power Connectors with crimp and solder-bucket terminations.



- 10 Amp current rating
- Fully polarised housings
- Latching for strain-relief
- Back Potting for Sealing Protection Ratings of IP55, combined with "O" ring for IP67. Order Code K3605-00
- Supplied loose for customer assembly
- Standard colour grey. Contact Technical Sales for other colours and plating options
- For Tooling see below
- Wire size: 18 AWG

MALE HOUSING

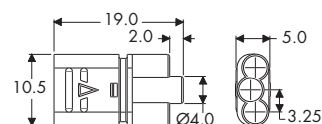


Order Code

2 way K3600-91

3 way K3700-91

FEMALE HOUSING



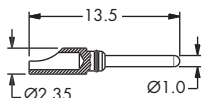
Order Code

2 way K3601-91

3 way K3701-91

CONTACTS

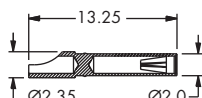
MALE SOLDER BUCKET



Tin Plated Order Code

K3602-06

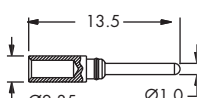
FEMALE SOLDER BUCKET



Tin Shell, Tin Contact Order Code

K3603-T6

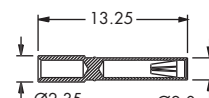
MALE CRIMP CONTACT



Tin Plated Order Code

K3606-06

FEMALE CRIMP CONTACT



Tin Shell, Tin Contact Order Code

K3607-T6

CRIMP BARREL SIZE

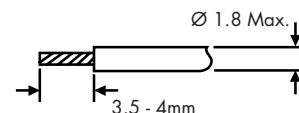
Wire Size (AWG)	Crimp Tool Setting	Pull-off Force (Newtons)
18	8	142N

Insertion/Withdrawal Tool Order Code:
ZK3610-00

Order Code:
M22520/2-01
(Use with Positioner)

Positioner Order Code:
ZK3609-00
(Use with Crimp Tool)

WIRE STRIPPING DETAILS



TOOLING FOR POWERFIT SERIES

Extraction Tool Order Code: **ZKF-021**

HAND CRIMP TOOL

Order Code: **ZKF-020**

SEMI AUTOMATED TOOLING

Machine Order Code: **ZGP-PEO**

Contact Order Code	AWG	Mini Applicator	Spares
KF-4400006	16-20	ZKF-022	ZKF-023
KF-4410006	22-24	ZKF-024	ZKF-025
KF-4600006	16-20	ZKF-022	ZKF-023
KF-4610006	22-24	ZKF-024	ZKF-025
KF-4620006	26-28	ZKF-026	ZKF-027