



Chipsmall Limited consists of a professional team with an average of over 10 year of expertise in the distribution of electronic components. Based in Hongkong, we have already established firm and mutual-benefit business relationships with customers from,Europe,America and south Asia,supplying obsolete and hard-to-find components to meet their specific needs.

With the principle of “Quality Parts,Customers Priority,Honest Operation,and Considerate Service”,our business mainly focus on the distribution of electronic components. Line cards we deal with include Microchip,ALPS,ROHM,Xilinx,Pulse,ON,Everlight and Freescale. Main products comprise IC,Modules,Potentiometer,IC Socket,Relay,Connector.Our parts cover such applications as commercial,industrial, and automotives areas.

We are looking forward to setting up business relationship with you and hope to provide you with the best service and solution. Let us make a better world for our industry!



Contact us

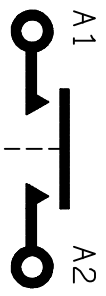
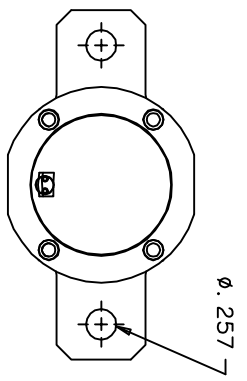
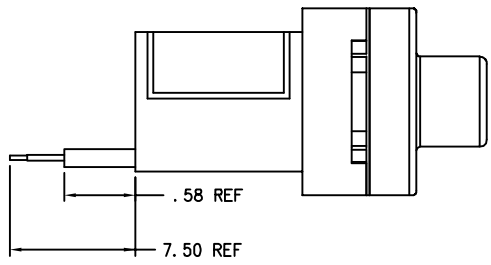
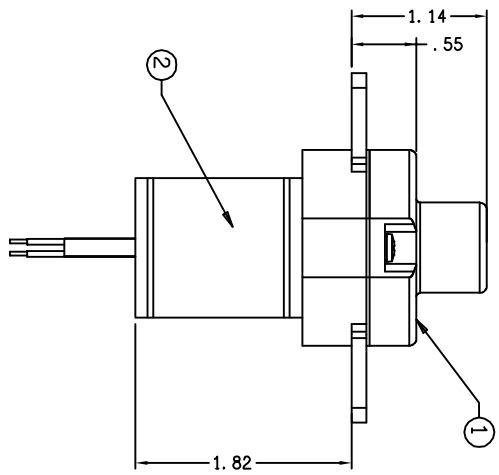
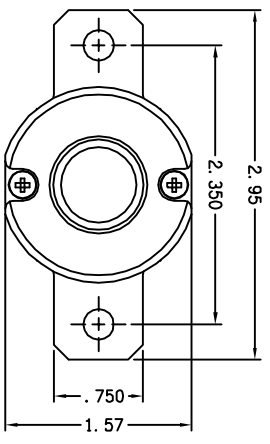
Tel: +86-755-8981 8866 Fax: +86-755-8427 6832

Email & Skype: info@chipsmall.com Web: www.chipsmall.com

Address: A1208, Overseas Decoration Building, #122 Zhenhua RD., Futian, Shenzhen, China



REVISIONS		RELEASED	DATE	APPROVED
S/W	DESCRIPTION			
A	ADDED SHRINK TUBING; MOD. COIL WEIGHT		04/03/12	
B	CHANGED HOLES TO Ø.257; ADDED PLATE-SCHEM.		04/03/22	
C	0531-04 CHANGED DD TO 0.5 - 7.0 VDC; REMOVED SPHERICAL PLATE		04/06/17	EPW
D	0562-04 ADDED REF DIMS .58 & 4.50		04/06/29	EPW
E	0829-04 REMOVED "PRELIMINARY DRAWING"		04/07/28	EPW
F	0903-04 7.50 WAS 4.50		04/12/14	CB
G	08-029031 ADDED COIL CURRENT TO COIL DATA		08/10/08	CB



CONSTRUCTION
GASKET SEALED

MAIN CONTACTS
SPST N.O. (DOUBLE BREAK)

CONFIGURATION
28 VDC

VOLTAGE
400 AMPS

CURRENT
4000 AMPS

RESISTIVE
150 mV MAX @ 400 AMPS

RUPTURE
VOLTAGE DROP

COIL DATA
CONTINUOUS

DUTY CYCLE
28 VDC

NOM. OPERATE VOLTAGE
18 VDC

MAX. PICKUP VOLTAGE
0.5-7.0 VDC

DROPOUT VOLTAGE
.55 AMPS @ 32 VDC @ 25° C

ENVIRONMENTAL DATA
-55 °C TO 85° C

TEMPERATURE
50,000 FT.

ALTITUDE
50,000 CYCLES

LIFE ELECTRICAL
100,000 CYCLES

LIFE MECHANICAL
WEIGHT, MAX .61 LBS

QTY	PART OR IDENTIFYING NO	PLATE-NAME	NOMENCLATURE OR DESCRIPTION	CAGE NO	DRAWING OR SPECIFICATION	MATERIAL OR NOTE
2	1	47541-001	PLATE-NAME			
1	1	46095-040	CONTACTOR ASSEMBLY-PRIMARY			

UNLESS OTHERWISE SPECIFIED DIMENSIONS ARE IN INCHES TOLERANCES IN	
F. 06	±.010 ± 1°
MATERIAL	
DR BY	EPW 04/03/03
CHK BY	CB 04/08/04
ENGR	EPW 04/08/04
MFG	MB 04/08/04
SIZE	CODE IDENT
C	74063
SCALE	NONE SHEET

Tyco Electronics 121 HOT LICKS BLVD., BOX 175 N. DIAMOND STREET WAINSTED, OHIO 44092	
CONTACTOR SPST N.O. DOUBLE BREAK 400 AMP, 28VDC	
DWG NO.	K-400B1F
REF TE P/N 2-1616921-3	