



Chipsmall Limited consists of a professional team with an average of over 10 year of expertise in the distribution of electronic components. Based in Hongkong, we have already established firm and mutual-benefit business relationships with customers from,Europe,America and south Asia,supplying obsolete and hard-to-find components to meet their specific needs.

With the principle of “Quality Parts,Customers Priority,Honest Operation,and Considerate Service”,our business mainly focus on the distribution of electronic components. Line cards we deal with include Microchip,ALPS,ROHM,Xilinx,Pulse,ON,Everlight and Freescale. Main products comprise IC,Modules,Potentiometer,IC Socket,Relay,Connector.Our parts cover such applications as commercial,industrial, and automotives areas.

We are looking forward to setting up business relationship with you and hope to provide you with the best service and solution. Let us make a better world for our industry!



## Contact us

Tel: +86-755-8981 8866 Fax: +86-755-8427 6832

Email & Skype: info@chipsmall.com Web: www.chipsmall.com

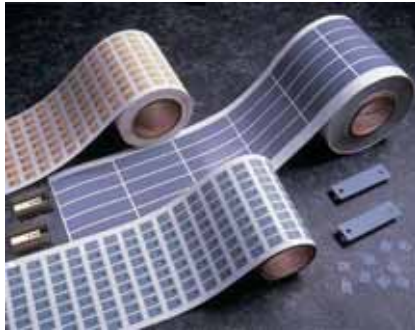
Address: A1208, Overseas Decoration Building, #122 Zhenhua RD., Futian, Shenzhen, China



## The Medium Performance Kapton®-Based Insulator

### Features and Benefits

- Thermal impedance:  
0.49°C-in<sup>2</sup>/W (@50 psi)
- Physically strong dielectric barrier against cut-through
- Medium performance film



Sil-Pad K-6 is a medium performance, film-based thermally conductive insulator. The film is coated with a silicone elastomer to deliver high performance and provide a continuous, physically strong dielectric barrier against “cut-through” and resultant assembly failures.

### TYPICAL PROPERTIES OF SIL-PAD K-6

PROPERTY	IMPERIAL VALUE	METRIC VALUE	TEST METHOD		
Color	Bluegreen	Bluegreen	Visual		
Reinforcement Carrier	Kapton	Kapton	—		
Thickness (inch) / (mm)	0.006	0.152	ASTM D 374		
Hardness (Shore A)	90	90	ASTM D 2240		
Breaking Strength (lbs/inch) / (kN/m)	30	5	ASTM D 1458		
Elongation (%)	40	40	ASTM D 412		
Tensile Strength (psi) / (MPa)	5000	34	ASTM D 412		
Continuous Use Temp (°F) / (°C)	-76 to 356	-60 to 180	—		
<b>ELECTRICAL</b>					
Dielectric Breakdown Voltage (Vac)	6000	6000	ASTM D 149		
Dielectric Constant (1000 Hz)	4.0	4.0	ASTM D 150		
Volume Resistivity (Ohm-meter)	10 <sup>12</sup>	10 <sup>12</sup>	ASTM D 257		
Flame Rating	VTM-O	VTM-O	U.L94		
<b>THERMAL</b>					
Thermal Conductivity (W /m-K)	1.1	1.1	ASTM D 5470		
<b>THERMAL PERFORMANCE vs PRESSURE</b>					
	Pressure (psi)				
	10	25	50	100	200
TO -220 Thermal Performance (°C/W)	3.24	3.03	2.76	2.45	2.24
Thermal Impedance (°C-in <sup>2</sup> /W) (1)	0.82	0.62	0.49	0.41	0.36

1) The ASTM D5470 test fixture was used. The recorded value includes interfacial thermal resistance. These values are provided for reference only. Actual application performance is directly related to the surface roughness, flatness and pressure applied.

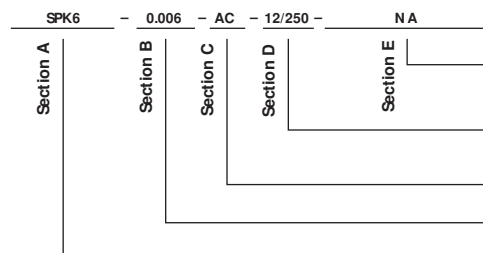
### Typical Applications Include:

- Power supplies
- Motor controls
- Power semiconductors

### Configurations Available:

- Sheet form, die-cut parts and roll form
- With or without pressure sensitive adhesive

### Building a Part Number



### Standard Options

◀ example

NA = Selected standard option. If not selecting a standard option, insert company name, drawing number, and revision level.

— = Standard configuration dash number, 1212 = 12" x 12" sheets, 12/250 = 12" x 250" rolls, or 00 = custom configuration

AC = Adhesive, one side  
00 = No adhesive

Standard thicknesses available: 0.006"

SPK6 = Sil-Pad K6 Material

Note: To build a part number, visit our website at [www.bergquistcompany.com](http://www.bergquistcompany.com).

Sil-Pad®: U.S. Patents 4,574,879; 4,602,125; 4,602,678; 4,685,987; 4,842,911 and others

Kapton® is a registered trademark of DuPont.