



Chipsmall Limited consists of a professional team with an average of over 10 year of expertise in the distribution of electronic components. Based in Hongkong, we have already established firm and mutual-benefit business relationships with customers from,Europe,America and south Asia,supplying obsolete and hard-to-find components to meet their specific needs.

With the principle of “Quality Parts,Customers Priority,Honest Operation,and Considerate Service”,our business mainly focus on the distribution of electronic components. Line cards we deal with include Microchip,ALPS,ROHM,Xilinx,Pulse,ON,Everlight and Freescale. Main products comprise IC,Modules,Potentiometer,IC Socket,Relay,Connector.Our parts cover such applications as commercial,industrial, and automotives areas.

We are looking forward to setting up business relationship with you and hope to provide you with the best service and solution. Let us make a better world for our industry!



## Contact us

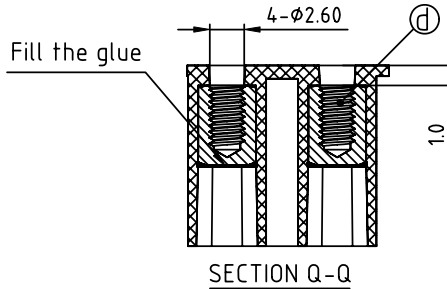
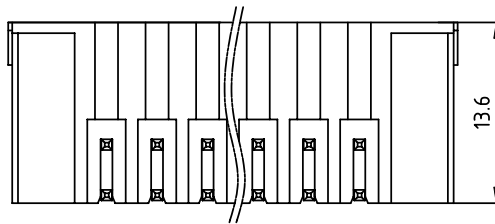
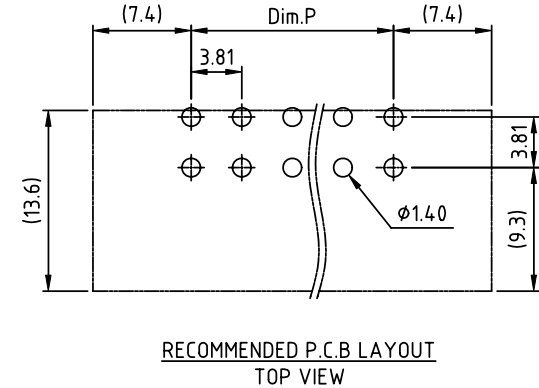
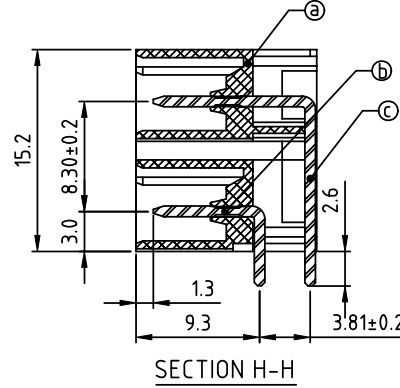
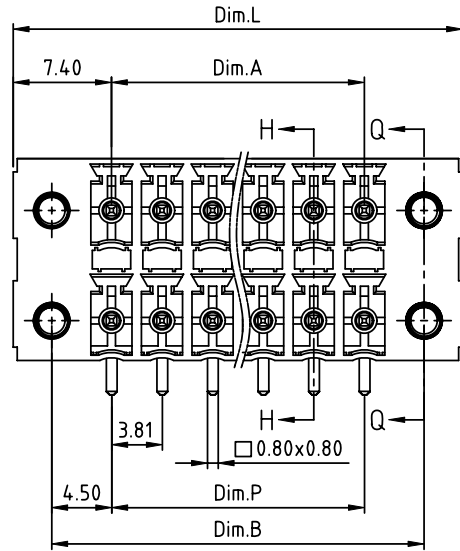
Tel: +86-755-8981 8866 Fax: +86-755-8427 6832

Email & Skype: info@chipsmall.com Web: www.chipsmall.com

Address: A1208, Overseas Decoration Building, #122 Zhenhua RD., Futian, Shenzhen, China



PRODUCT NUMBER	PITCH
KExx32x1A0J0G	3.81 mm



Material:

- Item a Terminal housing: Thermoplastic(UL94V-0)
- Item b Short pin: Copper Tin plated
- Item c Long pin: Copper Tin plated
- Item d With flange nut: Brass M2.5

Electrical:

- Voltage rating: 300V
- Current rating: 5.5A
- Withstanding Voltage: 1.6 KV
- Operating temperature: -40°C to +115°C
- Soldering temperature: 260°C ±5°C/5 Sec
- Safety Approval: cULus

DIMENSION

Dim.L	(N/2-1) × 3.81+14.8			
Dim.P	(N/2-1) × 3.81			
Dim.A	(N/2-1) × 3.81			
Dim.B	(N/2-1) × 3.81+9.0			

N=Number of poles

poles	Dim.L	Dim.P	Dim.A	Dim.B
2x2P-2x5P	±0.20	±0.15	±0.15	±0.15
2x6P-2x16P	±0.30	±0.25	±0.25	±0.25
2x17P-2x24P	±0.40	±0.30	±0.30	±0.30

PART NO.: KE xx 3 2 x 1 A0J0 G

Solid block	0	Black (RAL9005)	RoHS compliant (lead<4%) In copper Alloy
No. of poles	2	Red (RAL3001/D)	
04 2x2poles	3	Orange(RAL2011/P)	
06 2x3poles	4	Yellow(RAL1018/A)	
...	5	Green(RAL6018/T)	
48 2x24poles	6	Blue (RAL5015/A)	
	8	Grey(RAL7035/D)	
	9	White(RAL1102)	
	C	Green(RAL6018/U)	

mat'l. code		surface ASME Y14.5	tolerance ASME Y14.5	projection	product family TERMINAL BLOCK
ltr	ecn no	dr	date	 MM	title TERMINAL BLOCK PLUGGABLE SOCKET,RIGHT ANGLE,WITH FLANGE
tolerances unless otherwise specified					
angles		φ	X.±0.5		dwg no KExx32x1A0J0G sheet 1 of 1 size A4
%		±	X.X±0.3		
X*1*			X.XX±0.1		
dr	EVIN ZHONG	042414			
enr	EVIN ZHONG	042414			
chr	HANKE FENG	042414			
appd	SHI JUN	042414			
sheet index	revision	A			
	sheet	1			